

# **Badische Landesbibliothek Karlsruhe**

**Digitale Sammlung der Badischen Landesbibliothek Karlsruhe**

## **12 Deutsche Tänze im Clavierauszug**

**Wölfl, Joseph**

**Wien, [1796]**

**urn:nbn:de:bsz:31-47414**

12 Deutsche Tänze  
im Clavierauszug  
welche in dem K. K. kleinen Redouten Saal  
in Wien dieses Jahr 1796 aufgeführt worden  
Componirt von  
Herrn Woelfel  
in Wien, bey Artaria et Comp

625.



DEUTSCHE

I.

II.

III.

IV.

2

Musical score for section IV, measures 1-8. It consists of two systems of two staves each. The first system has a treble clef with a 3/4 time signature and a bass clef. The second system has a treble clef with a 3/4 time signature and a bass clef. Dynamics include 'p' and 'f'.

V.

Musical score for section V, measures 9-16. It consists of two systems of two staves each. The first system has a treble clef with a 3/4 time signature and a bass clef. The second system has a treble clef with a 3/4 time signature and a bass clef. Dynamics include 'p' and 'f'.

VI.

Musical score for section VI, measures 17-24. It consists of two systems of two staves each. The first system has a treble clef with a 3/4 time signature and a bass clef. The second system has a treble clef with a 3/4 time signature and a bass clef. Dynamics include 'p' and 'f'.

VII.

Musical notation for piece VII, measures 1-4. The piece is in 3/4 time with a key signature of one sharp (F#). The melody is written in the treble clef and features a series of eighth-note runs. The bass line is in the bass clef and provides a harmonic accompaniment with chords and single notes.

Musical notation for piece VII, measures 5-8. The melody continues with eighth-note patterns, and the bass line maintains its accompaniment. The piece concludes with a double bar line.

VIII.

Musical notation for piece VIII, measures 1-4. The piece is in 3/4 time with a key signature of one sharp (F#). The melody is in the treble clef, starting with a quarter rest followed by eighth notes. The bass line is in the bass clef and consists of chords.

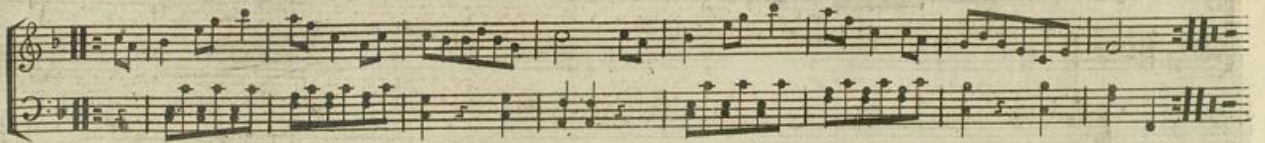
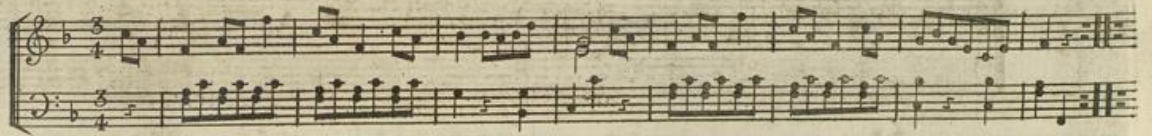
Musical notation for piece VIII, measures 5-8. The melody continues with eighth-note patterns, and the bass line maintains its accompaniment. The piece concludes with a double bar line.

IX.

Musical notation for piece IX, measures 1-4. The piece is in 3/4 time with a key signature of one sharp (F#). The melody is in the treble clef and features eighth-note runs. The bass line is in the bass clef and consists of chords.

Musical notation for piece IX, measures 5-8. The melody continues with eighth-note patterns, and the bass line maintains its accompaniment. The piece concludes with a double bar line.

X.



XI.



XII.



5

Coda.

