

Badische Landesbibliothek Karlsruhe

Digitale Sammlung der Badischen Landesbibliothek Karlsruhe

**Federzeichnungen für Violine und Klavier - Mus. Hs.
1418,236**

Schweikert, Margarete

[S.I.]

urn:nbn:de:bsz:31-60226

Federzeichnungen

für Violine und Klavier

komponiert von

Margarete Schwickert.



C. A. KLEMM.
C. No 7.



BLB

Badische Landesbibliothek
Karlsruhe

Nicht schnell, jeder Satz sehr Gemitt

T.

mf

mp

zweifeltan

mf

ein wenig Breit

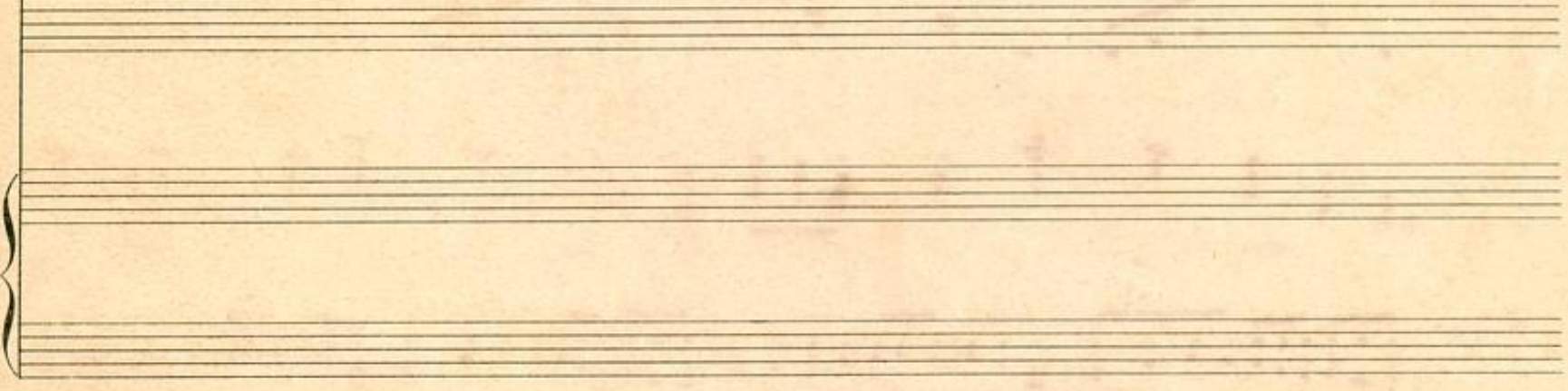
mf

zweifeltan

mf



Mus Hs 1418, 237



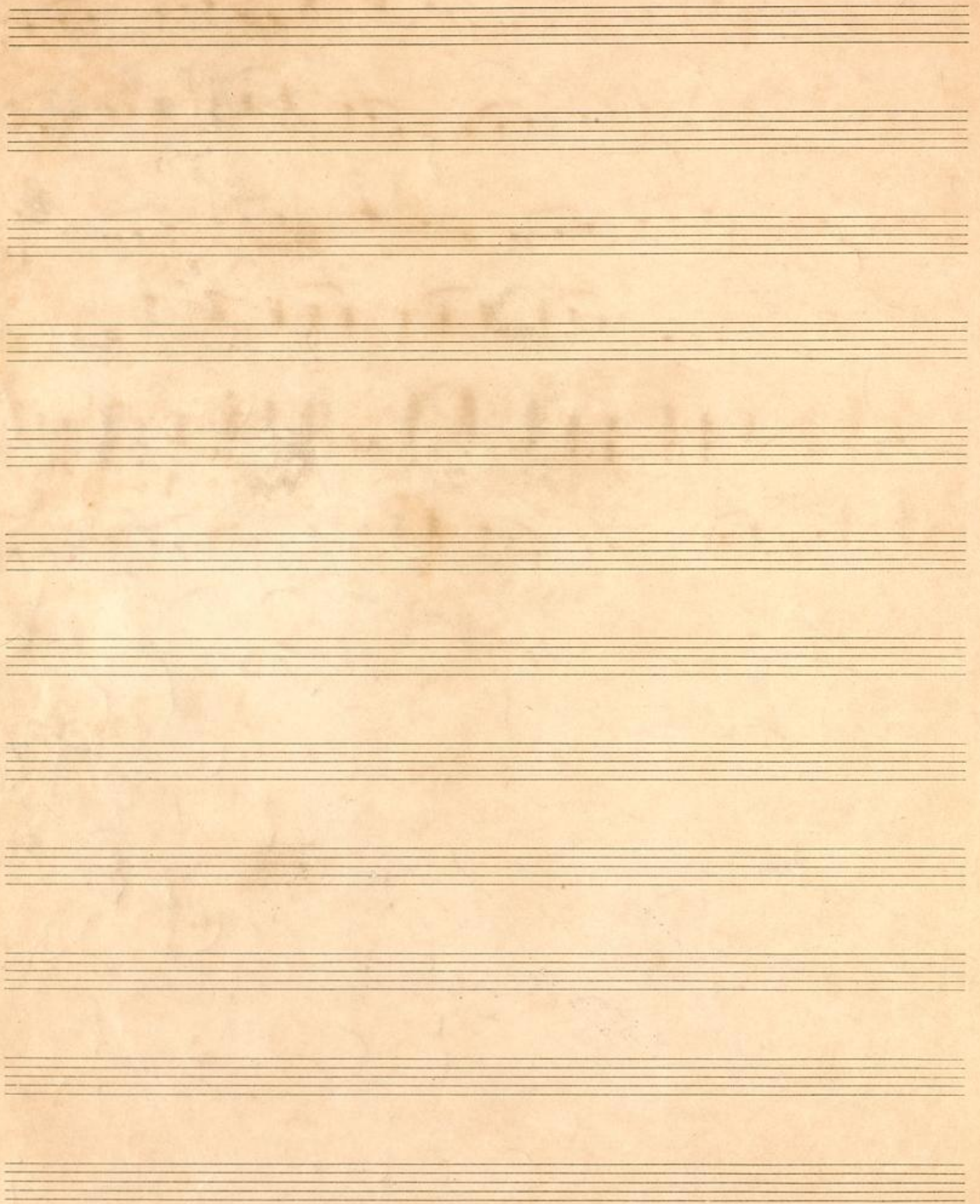
C. A. KLEMM.
C. No 7.

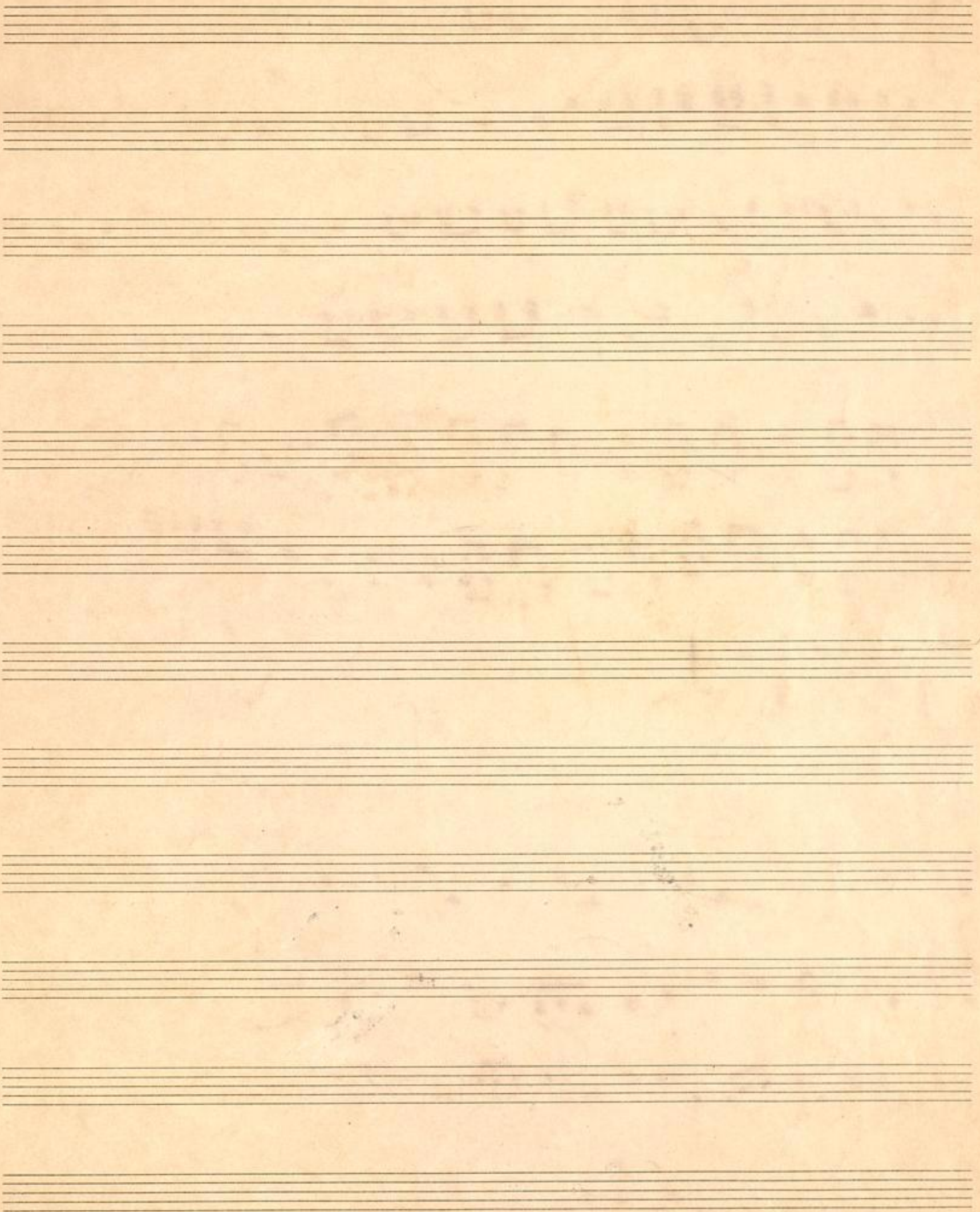


Leipz. Versongt

Handwritten musical score for 'Leipz. Versongt'. The score is written on six staves. The first staff begins with a treble clef, a key signature of one flat (B-flat), and a 3/4 time signature. The music consists of a single melodic line with various note values, including quarter, eighth, and sixteenth notes, and rests. The second staff continues the melody. The third staff also continues the melody. The fourth staff features a change in time signature to 4/4 and includes some accidentals. The fifth staff contains a complex rhythmic pattern with many beamed notes. The sixth staff concludes the piece with a final cadence and a double bar line. The paper is aged and shows some wear and tear.

Seven empty musical staves, each consisting of five horizontal lines, arranged vertically on the page. These staves are blank and do not contain any musical notation.





C. A. KLEMM.
A. N^o 2.



BLB

Badische Landesbibliothek
Karlsruhe

Sul 9

e dur 7

Handwritten musical notation for the first system. It consists of a treble clef staff with a melodic line and a grand staff (treble and bass clefs) with piano accompaniment. The key signature has one flat (B-flat) and the time signature is 7/8. The notation includes various note values, rests, and dynamic markings such as *f* and *bb*.

Handwritten musical notation for the second system. It continues the piece with a treble clef staff and a grand staff. The instruction *ritardando* is written across the system. Dynamic markings include *pp* and *ppp*. The notation features complex rhythmic patterns and chordal textures.

Handwritten musical notation for the third system. It continues the piece with a treble clef staff and a grand staff. The piano accompaniment becomes more intricate with triplets and dense chordal structures. Dynamic markings like *ppp* are present.

Handwritten musical notation for the fourth system. It concludes the piece with a treble clef staff and a grand staff. The instruction *poco a cresco* is written at the bottom. The notation includes a final cadence and a double bar line.

Margarete Schweikert.

