

Badische Landesbibliothek Karlsruhe

Digitale Sammlung der Badischen Landesbibliothek Karlsruhe

An die Jungfrau Maria - Mus. Hs. 1418,250

Schweikert, Margarete

[S.I.]

urn:nbn:de:bsz:31-60055

Sopran

An die Jungfrau Maria

Mus. Hs. 1612, 250

Margarete Schwickert.

für gemischten Chor Komp. v.

Lento
sempre dolcissima

p O sanc-tis-si-ma! O pi-is-si-ma! Dul-cis Vir-go Ma-

ri-a! *mf* ma-ter a-ma-bi-lis, in-te-mera-ta

f O-ra pro no-bis, *ff* o-ra pro nobis, *dolce mp* pro no-bis. O sanc-

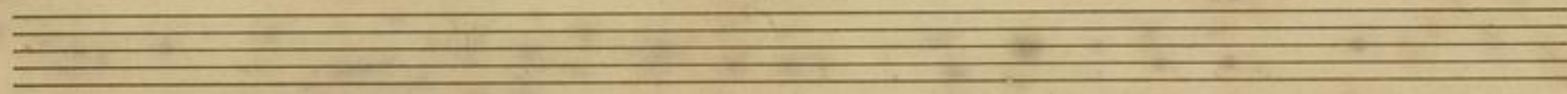
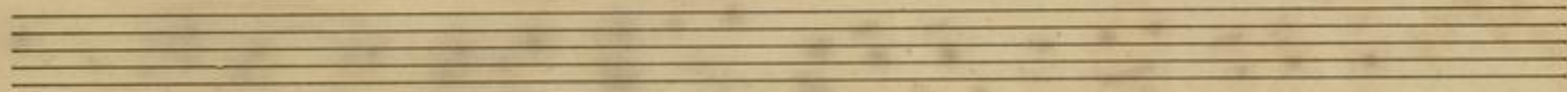
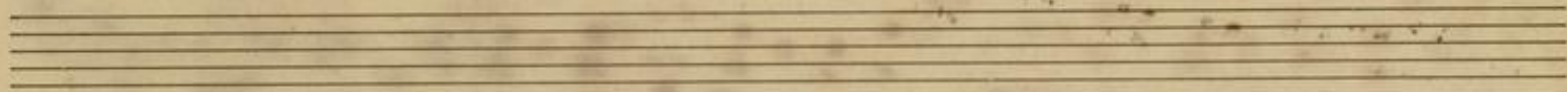
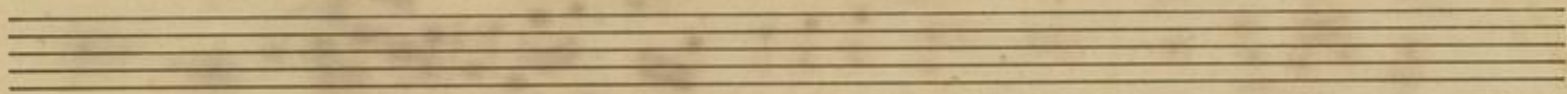
tis-si-ma! O pi-is-si-ma! Dul-cis Vir-go Ma-ri-

pp a! *mf* O-ra pro no-bis, *mf* o-ra pro nobis Dul-cis Vir-go



BLB

Badische Landesbibliothek
Karlsruhe



Alt

An die Jungfrau Maria

Zu Mus. No. 1418, 250

Margarete Schweikert.

Lento

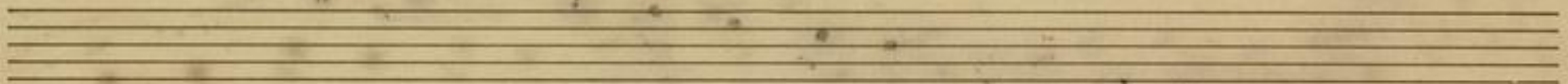
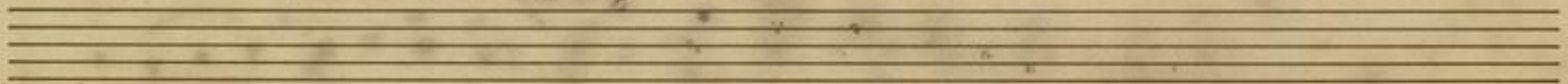
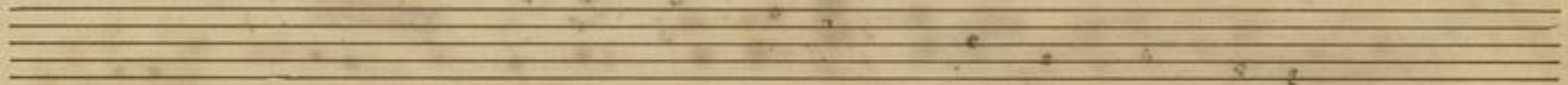
sempre dolcissimo

für gem. Chor Komp. v.



Handwritten musical notation on a single staff. The key signature is three sharps (F#, C#, G#). The lyrics are: *ri - a! o - ra pro nobis, o - ra pro no - bis. Dulcis*. Dynamic markings include *pp*, *mf*, and *mp*.

Handwritten musical notation on a single staff. The key signature is three sharps (F#, C#, G#). The lyrics are: *Vir-go Ma - ri - a. A - men*. Dynamic markings include *p* and *pp*.



Tenor

An die Jungfrau Maria

zu H. 1418, 250

Lento

sempre dolcissimo

für gem. Chor Komp. von

Margarek Schwitter.

pp sanc-tis-si-ma! O pi-is-si-ma! Dulcis, dul-cis Vir-go Ma-ri-a!

mf Ma-ter a-ma-ta, in-teme-rata, in-teme-ra-ta, ma-ter a-

f ma-ta, in-teme-ra-ta O-ra pro nobis, a-ra pro

dolce
pp nobis, pro no-bis! O sanc-tis-si-ma! O pi-is-si-ma! Dulcis, dulcis

pp Vir-go Ma-ri-a! *mf* O-ra pro nobis, *mf* ora pro no-bis, Dul-cis

A handwritten musical score on aged paper. The first staff features a treble clef and a key signature of three sharps (F#, C#, G#). The melody consists of a series of eighth notes: D5, E5, F#5, G#5, A5, B5, A5, G#5, F#5, E5, D5. The lyrics 'Dul-cis Virgo Ma-ri-a! A-men.' are written below the notes. Performance markings include an accent (>) over the first note, a dynamic marking of *p* (piano) over the 'A' in 'A-men', and a dynamic marking of *pp* (pianissimo) over the final notes. The piece concludes with a double bar line. Below the first staff are four empty musical staves.



Bass

An die Jungfrau Maria

zu Mus. He. 11418, 250

Margarete Schweißert

Lento

sempre delectissimo

für gem. Chor Komp. von

O sane-tis-si-ma! O spi-is-si-ma! Dulcis Vir-go Ma-ri-

Ma-ter a-ma-ta in-ter-me-ra-ta, ma-ter in-teme-ra-

ta O-ra pro no-bis, ora pro nobis pro no-bis! O sane-

tis-si-ma! O spi-is-si-ma! Dulcis Vir-go Ma-ri-a! O-ra pro

no-bis, ora pro nobis Dulcis Vir-go Ma-ri-a! A-men.

