

# **Badische Landesbibliothek Karlsruhe**

**Digitale Sammlung der Badischen Landesbibliothek Karlsruhe**

**15 Pieces - Don Mus.Ms. 1046**

**[S.l.], 1750-1799 (18.2d)**

**urn:nbn:de:bsz:31-96915**

*ex dis*

Handwritten musical score for a piece in G major, 3/4 time, consisting of 16 measures. The score is written on two staves (treble and bass clef) and includes various musical notations such as notes, rests, and ornaments. The notation is in a cursive, historical style. The piece begins with a treble clef, a key signature of one sharp (F#), and a common time signature (C). The melody is primarily in the treble clef, with the bass clef providing harmonic support. There are several instances of ornaments, particularly in the later measures. The piece concludes with a double bar line and a fermata over the final note.

*bel.*

*in D*

*ex dis.*

Handwritten musical notation for the first system, featuring a treble clef staff with a melodic line and a bass clef staff with accompaniment. The key signature has two flats and the time signature is common time.

Handwritten musical notation for the second system, continuing the melodic and accompaniment lines from the first system.

Handwritten musical notation for the third system, showing more complex melodic patterns in the treble staff.

Handwritten musical notation for the fourth system, with dense melodic passages in both staves.

Handwritten musical notation for the fifth system, including the annotation *ex dis.* above the treble staff.

Handwritten musical notation for the sixth system, concluding the page with final notes in both staves.

*ff* *4-6-8* *Trage*

Handwritten musical notation for the first system, featuring a treble clef with a key signature of two flats and a 6/8 time signature. The melody consists of eighth-note runs with some accidentals. The bass clef accompaniment consists of a simple harmonic line of quarter notes.

Handwritten musical notation for the second system, continuing the melody and accompaniment from the first system.

Handwritten musical notation for the third system, showing more complex melodic patterns in the treble and a more active bass line.

Handwritten musical notation for the fourth system, with the treble clef melody becoming more intricate and the bass clef accompaniment providing a steady harmonic foundation.

*andante.*

Handwritten musical notation for the fifth system, marked "andante". It features a 3/4 time signature and includes dynamic markings such as "cresc." and "p.". The melody is more expressive and slower.

Handwritten musical notation for the sixth system, concluding the piece with a final melodic flourish in the treble and a simple accompaniment in the bass.

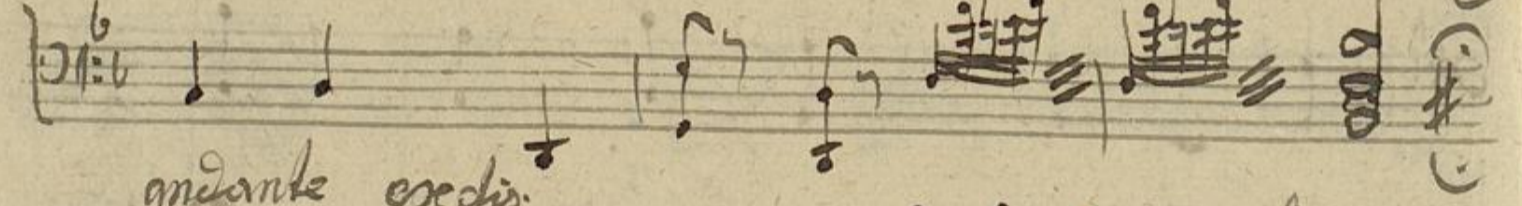
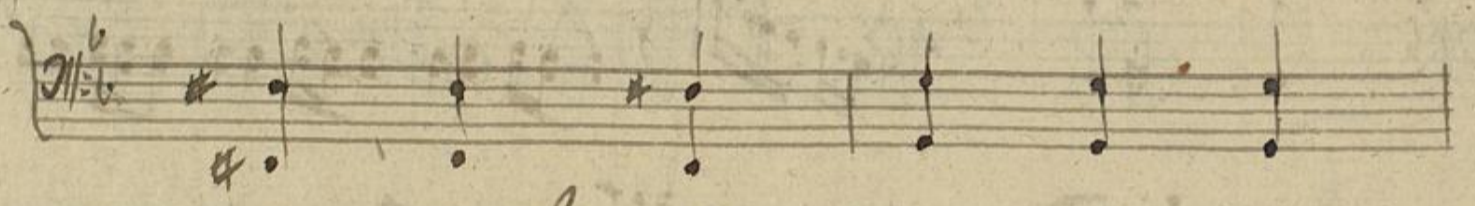
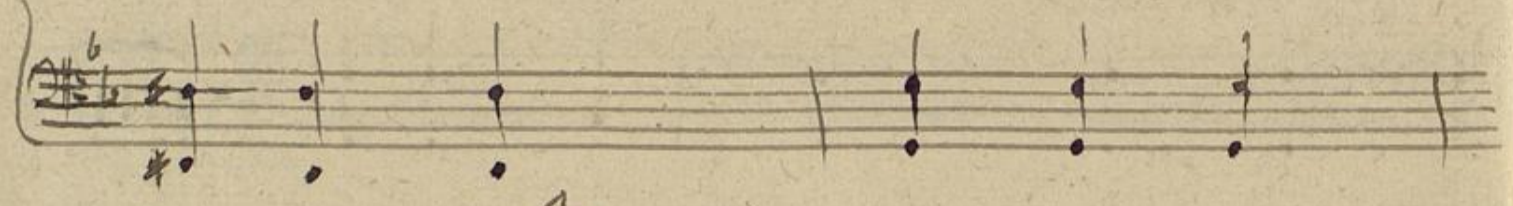
Handwritten musical notation for the first system. The top staff is in treble clef with a key signature of two flats (B-flat and E-flat) and a 3/4 time signature. It contains a melodic line with eighth and sixteenth notes. The bottom staff is in bass clef with a key signature of two flats and contains a bass line with dotted notes.

Handwritten musical notation for the second system. The top staff is in treble clef with a key signature of two flats and a 3/4 time signature, containing a melodic line with a 'tr.' (trill) marking. The middle staff is in bass clef with a key signature of two flats, containing a bass line. The bottom staff is a grand staff (treble and bass clefs) with a key signature of two flats, containing piano accompaniment with chords and arpeggiated figures.

Handwritten musical notation for the third system. The top staff is in treble clef with a key signature of two flats and a 3/4 time signature, containing a melodic line. The bottom staff is in bass clef with a key signature of two flats and contains a bass line with dotted notes.

Handwritten musical notation for the fourth system. The top staff is in treble clef with a key signature of two flats and a 3/4 time signature, containing a melodic line with a 'tr.' marking. The middle staff is in bass clef with a key signature of two flats, containing a bass line. The bottom staff is a grand staff with a key signature of two flats, containing piano accompaniment.

Handwritten musical notation for the fifth system. The top staff is in treble clef with a key signature of two flats and a 3/4 time signature, containing a melodic line with a 'tr.' marking. The bottom staff is in bass clef with a key signature of two flats and contains a bass line.



*andante exed.*



Handwritten musical notation on two staves. The upper staff is in treble clef with a key signature of two flats (B-flat and E-flat). The lower staff is in bass clef. The music consists of several measures of notes, including quarter and eighth notes, with some slurs and dynamic markings.

Handwritten musical notation on two staves. The upper staff is in treble clef with a key signature of two flats. The lower staff is in bass clef. The music continues with various rhythmic patterns and slurs.

Handwritten musical notation on two staves. The upper staff is in treble clef with a key signature of two flats. The lower staff is in bass clef. This system features more complex rhythmic figures and slurs.

Handwritten musical notation on two staves. The upper staff is in treble clef with a key signature of two flats. The lower staff is in bass clef. The notation includes various note values and rests.

Handwritten musical notation on two staves. The upper staff is in treble clef with a key signature of two flats. The lower staff is in bass clef. The music shows a continuation of the melodic and harmonic ideas.

Handwritten musical notation on two staves. The upper staff is in treble clef with a key signature of two flats. The lower staff is in bass clef. The system concludes with a double bar line and a final chord in the upper staff.

ese dis andantino.

Handwritten musical notation for the first system, featuring a treble clef, a 3/4 time signature, and a key signature of two flats. The melody consists of eighth and sixteenth notes.

Handwritten musical notation for the second system, including a bass clef and a piano (p) dynamic marking. The bass line features dotted rhythms and rests.

Handwritten musical notation for the third system, showing a treble clef and a piano (p) dynamic marking. The melody continues with eighth notes.

Handwritten musical notation for the fourth system, featuring a treble clef and a piano (p) dynamic marking. The melody is composed of eighth notes.

Handwritten musical notation for the fifth system, showing a treble clef and a piano (p) dynamic marking. The melody continues with eighth notes.

Handwritten musical notation for the sixth system, featuring a treble clef and a piano (p) dynamic marking. The melody consists of eighth notes.

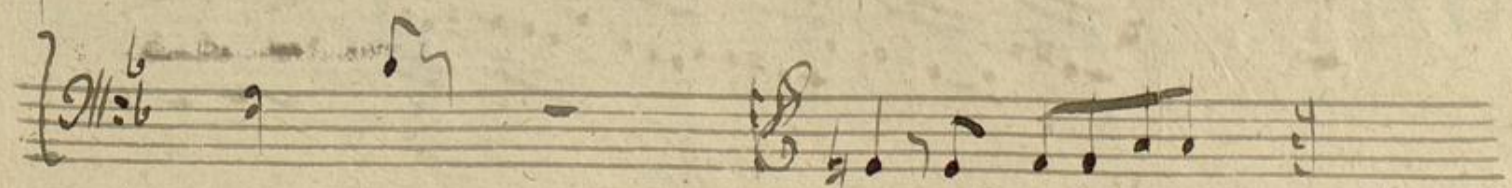
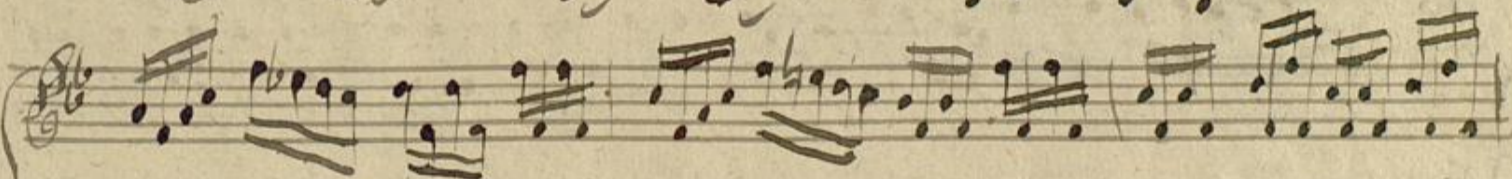
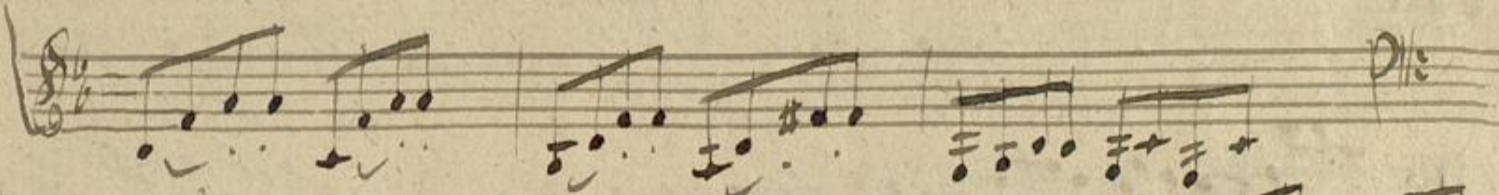
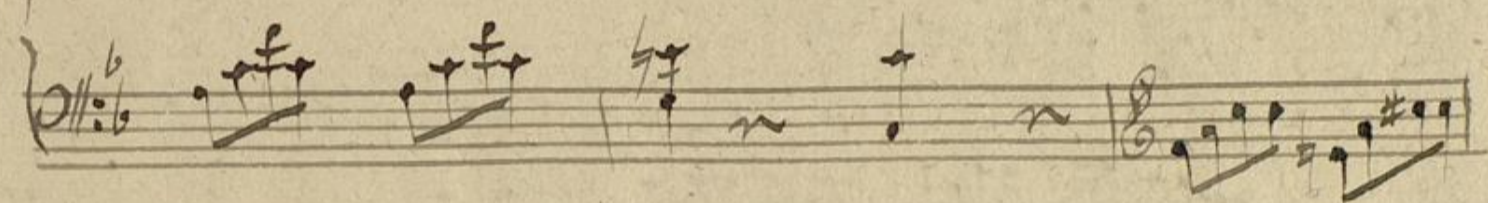
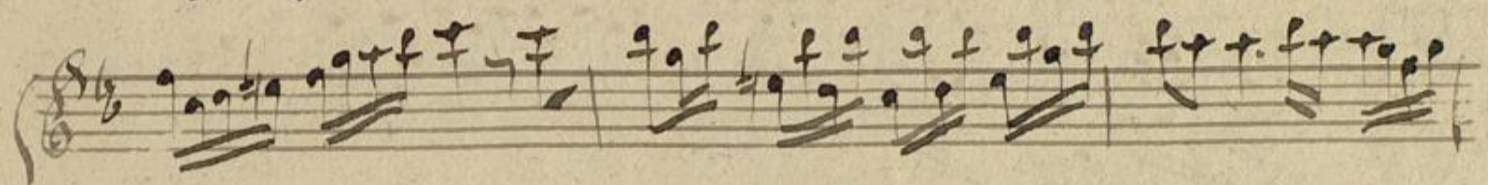
Handwritten musical notation for the seventh system, showing a treble clef and a piano (p) dynamic marking. The melody continues with eighth notes.

Handwritten musical notation for the eighth system, featuring a treble clef and a piano (p) dynamic marking. The melody consists of eighth notes.

Handwritten musical notation for the ninth system, showing a treble clef and a piano (p) dynamic marking. The melody continues with eighth notes.

*andante* *ex dis.*

*allegro ex b.*



Handwritten musical score on page 12, featuring multiple staves with notes, rests, and dynamic markings like "alleg. exc. b.". The score includes various musical notations such as clefs, time signatures, and articulation marks. The handwriting is in dark ink on aged paper.

Partial view of the adjacent page showing musical staves with notes and clefs, continuing the musical composition from the previous page.

Handwritten musical score on page 13, featuring multiple systems of staves with musical notation. The notation includes treble and bass clefs, various note values, and rests. A tempo marking "allegretto. exc." is visible in the lower section of the page. The manuscript is written in dark ink on aged, yellowish paper.

This page contains a handwritten musical score for a piece in 6/8 time, marked with a 'C' time signature. The score is organized into ten systems, each consisting of a treble clef staff and a bass clef staff. The notation is dense and characteristic of 18th-century manuscript style, featuring many sixteenth and thirty-second notes, often beamed together. There are several instances of mordents and other ornaments. The piece concludes with a double bar line and repeat signs at the end of the final system.

alleg. ex b.

This page contains a handwritten musical score for piano, organized into ten systems. Each system consists of two staves: a treble clef staff on top and a bass clef staff on the bottom. The music is written in a style characteristic of the late 18th or early 19th century, featuring a variety of note values including eighth, sixteenth, and thirty-second notes, as well as rests and slurs. The tempo and mood are indicated by the marking 'alleg. ex b.' at the top left. The paper shows signs of age, with some foxing and staining, particularly at the bottom left corner.

This page contains ten systems of handwritten musical notation. Each system consists of two staves. The top staff of each system is in the treble clef, and the bottom staff is in the bass clef. The key signature is one flat (B-flat). The notation includes various rhythmic values, including eighth and sixteenth notes, rests, and slurs. There are some markings above the first staff of the third system, possibly indicating a repeat or a specific performance instruction. The paper shows signs of age, including some ink bleed-through from the reverse side and some staining.

exc.

*And.*

This image shows a page of handwritten musical notation, likely a manuscript for a piece of music. The page is numbered '17' in the top right corner. At the top left, the word 'exc.' is written, and at the top center, the tempo marking '*And.*' is present. The notation consists of several systems, each with two staves. The upper staff of each system uses a treble clef, and the lower staff uses a bass clef. The time signature is 6/8. The music features a variety of note values, including eighth and sixteenth notes, as well as rests. There are also some dynamic markings and phrasing slurs. The paper is aged and shows some staining and bleed-through from the reverse side.

This page contains a handwritten musical score for piano and bass. It consists of ten systems of two staves each. The notation includes treble and bass clefs, a key signature of one flat (B-flat), and a tempo marking of "allegro in b". The music features a variety of rhythmic patterns, including eighth and sixteenth notes, and rests. The handwriting is in dark ink on aged, slightly yellowed paper.

This page contains a handwritten musical score for a multi-staff instrument, likely a harpsichord or keyboard. The score is written in a historical style, possibly from the 17th or 18th century. It consists of ten systems of two staves each. The upper staff of each system is in the treble clef, and the lower staff is in the bass clef. The music is in a 6/8 time signature, as indicated by the '6' over the '8' in the clef signatures. The notation includes a variety of note values, including minims, crotchets, and quavers, along with rests and dynamic markings such as 'p' (piano) and 'f' (forte). The paper shows signs of age, with some staining and foxing, particularly in the lower half of the page.

Handwritten musical notation for the first system, consisting of two staves with treble and bass clefs, showing melodic and harmonic lines.

Handwritten musical notation for the second system, continuing the melodic and harmonic development.

Handwritten musical notation for the third system, featuring a change in tempo and dynamics. The tempo marking *adagio. ex dis.* is written above the staff.

Handwritten musical notation for the fourth system, showing a 3/4 time signature.

Handwritten musical notation for the fifth system, continuing the melodic line.

Handwritten musical notation for the sixth system, showing a change in dynamics.

Handwritten musical notation for the seventh system, featuring a melodic flourish.

Handwritten musical notation for the eighth system, showing a melodic flourish.

Handwritten musical notation for the ninth system, concluding the page.

This page contains a handwritten musical score for a multi-staff instrument, likely a harpsichord or keyboard. The score is written in a historical style, possibly from the 17th or 18th century. It features several systems of two staves each, with the upper staff in treble clef and the lower staff in bass clef. The notation is dense, with frequent sixteenth and thirty-second notes, often beamed together. There are also various rests and dynamic markings. The paper shows signs of age, including some staining and foxing.

Handwritten musical notation for the first system, featuring a treble clef with a key signature of two flats and a 3/4 time signature. The melody consists of eighth notes with stems pointing up, followed by a quarter rest and a half note. The bass clef part consists of quarter notes.

*adagio in dis.*

Handwritten musical notation for the second system, continuing the piece. It features multiple staves with complex rhythmic patterns, including sixteenth and thirty-second notes, and rests. The notation is dense and characteristic of a Baroque or Classical manuscript.

