

# **Badische Landesbibliothek Karlsruhe**

**Digitale Sammlung der Badischen Landesbibliothek Karlsruhe**

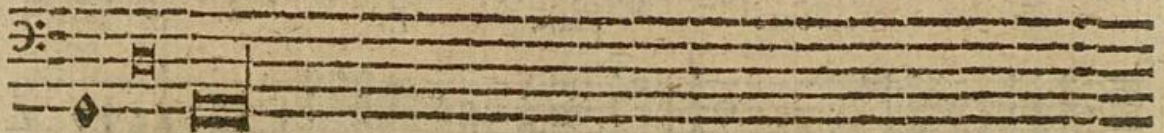
**Ander Theil Geistlicher Concerten und Harmonien, à 1. 2.  
3. 4. 5. 6. 7. &c. voc. cum & sine violinis, & basso ad  
organa**

**Profe, Ambrosius**

**Leipzig, 1641**

XXIV. Teutonium dudum/Adveniunt Pascha

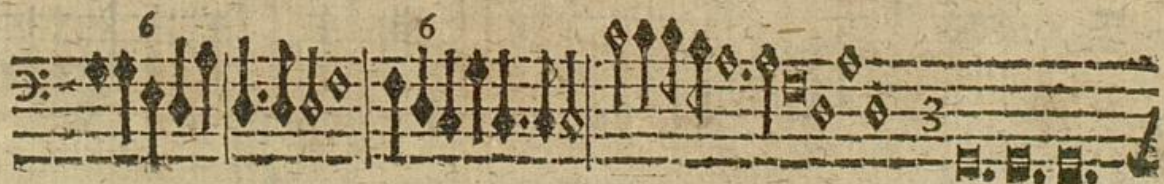
**urn:nbn:de:bsz:31-33266**



XXIV. A 7. C. A. T. T. B. con 2 Viol. Heinrich Schütz.



Etoniam dudum,  
Adveniunt Pascha.



k z



The image shows a page of handwritten musical notation on aged paper, numbered 76. The score consists of seven staves. The first staff is a treble clef with a common time signature (C). The second staff is a bass clef with a common time signature (C) and includes dynamic markings: 'forte', 'pian.', 'f.', and 'p.'. The third staff is a bass clef with dynamic markings 'f.' and 'p.'. The fourth staff is a bass clef with a '6' marking. The fifth staff is a bass clef with '6', '4', and '6' markings. The sixth and seventh staves are bass clefs. The notation includes various note values, rests, and articulation marks like asterisks and slurs.



Five staves of musical notation for a keyboard instrument. The notation includes various rhythmic values, accidentals, and articulation marks such as asterisks and slurs. The first staff begins with a treble clef and a common time signature. The subsequent staves continue the piece with similar notation, including some sixteenth-note passages and rests.

XXV. Dialogus à 7 Voc. Heinrich Schütz.

76 \* b 76      76 \* b 76 \* b 76 \* \*

**E** Ch beschwere euch.

The first staff of the section begins with a large, ornate initial 'E' in a decorative script. The text 'Ch beschwere euch.' is written below the first few notes. Above the staff, there are two sets of rhythmic markings: '76 \* b 76' and '76 \* b 76 \* b 76 \* \*'. The notation is in a common time signature and features a mix of eighth and sixteenth notes.

A continuation of the musical notation from the previous block. It features several measures of music with various rhythmic patterns and accidentals. At the bottom of the staff, there are markings 'k' and '3', which likely refer to specific performance techniques or ornaments.