

**Badische Landesbibliothek Karlsruhe**

**Digitale Sammlung der Badischen Landesbibliothek Karlsruhe**

**ILLUSTRIS CORONA STELLARUM DUODECIM**

**Faitelli, Vigilius Blasius**

**Augustae Vindelicorum, 1754**

Klarine II

**urn:nbn:de:bsz:31-34127**

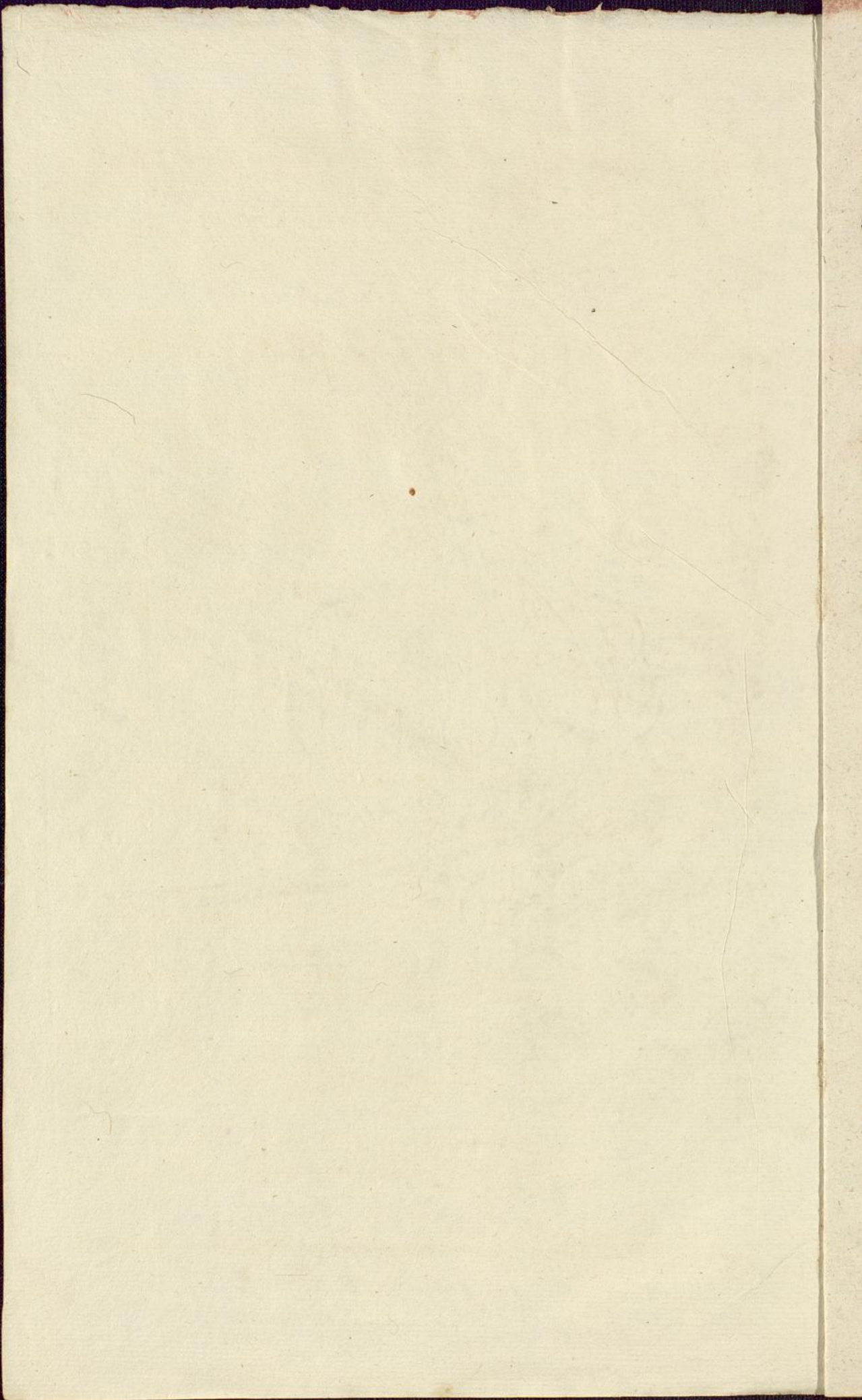
Dr. 1006

Faitelli  
Offertory.

Clarinet II. dum.

8.





ILLUSTRIS CORONA  
STELLARUM DUODECIM

Seu

DUODECIM  
OFFERTORIA

DEO ter Optimo Maximo, Magnæque  
Cœlorum REGINÆ, ac COELITIBUS  
laudes concinentia.

A

IV. Vocibus; II. Violinis, II. Clarinis, Tympano,  
& doppio Basso continuo.

A

VIGILIO BLASIO FAITELLI,  
Capellæ Regiæ PARTHENONIS Halæ ad Oenum Mufices,  
& hujus Operis Compositore.

OPUS III.

CLARINO II.

---

AUGUSTÆ-VINDELICORUM,

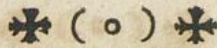
Sumptibus JOANNIS JACOBI LOTTERI Hæredum. MDCC LIV.



## INDEX.

- OFFERTORIUM I. Solenne. Da pacem Domine. *Pro Festo S.S. Corporis Christi, vel in Commun. Comprecatione.* à IV. Vocib. II. Violin. II. Clar. Tymp. & dopp. Basso continuo.**
- II. Homo quidam. *De Venerabile Sacramento.* à IV. Vocib. II. Violin. II. Cornu ex F. ad libit. & dopp. Basso contin.
- III. Homo quidam. *De Venerabile Sacramento.* à IV. Vocib. II. Violin. & dopp. Basso contin.
- IV. Solenne. Terribilis est locus iste. *In Dedicazione Ecclesie.* à IV. Vocib. II. Violin. II. Clar. Tymp. II. Corn. ex F. pro Aria & dopp. Basso contin.
- V. Solenne. Quæ est ista. *De Beata Virgine Maria.* à IV. Vocib. II. Violin. II. Clarin. Tymp. & dopp. Basso contin.
- VI. Ave Maria. *De Beata Virgine Maria.* à IV. Vocib. II. Violin. & dopp. Basso contin.
- VII. En Sanguine rubentes. *De Apostolis vel Martyribus.* à IV. Vocib. II. Violin. II. Clarin. vel Corn. ex D. Tymp. ad libit. & dopp. Basso contin.
- VIII. Cedrus ut spernit. *De Confessore.* à IV. Vocib. II. Violin. II. Corn. ex F. & dopp. Basso contin.
- IX. Solenne. Laudate Filii hominum. *De Sancto vel Sancta.* à IV. Vocib. II. Violin. II. Clarin. Tymp. II. Corn. ex F. & dopp. Basso contin.
- X. Solenne. Castæ mentes. *De Virg. Martyre, vel non Marty. vel in Solennit. cujuscunque Sancti.* à IV. Vocib. II. Violin. II. Clarin. Tymp. & dopp. Basso contin.
- XI. Quàm justa Deus trutina. *De Tempore.* à IV. Vocib. II. Violin. II. Corn. ex F. & dopp. Basso contin.
- XII. Spes non confundit. *De Tempore.* à IV. Vocib. II. Violin. & dopp. Basso contin.





# CLARINO II. OFFERTORIUM I.

Pro Festo S. S. Corporis Christi, vel in Commun. Comprecatione.

Allegro.

**D**   
 A pacem.

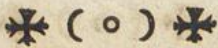
piu Allegro.

Faitelli XII. Offertoria.

[Aa]

Clarino II.





Largo. Allegro. Adagio.

Jesu nostri. Da pacem &c. Da capo.

**OFFERTORIUM II.**  
De Venerabile Sacramento.

*Cornu II. Ex F.*

Allabreve.

Omo.

Aria tacet. Homo &c. Da capo.

**OFFERTORIUM IV.**  
In Dedicatione Ecclesiae.

*Clarino II. Ex C.*

Grave.

Erribilis.



Aria. Spirituoso.

NB. Cornu II. ex F.

Musical staff with treble clef, C major key signature, and common time signature. The first measure contains the text "O fors." below it.

Musical staff with treble clef, C major key signature, and common time signature. Measure numbers 1 and 6 are indicated above the staff.

Musical staff with treble clef, C major key signature, and common time signature. Measure number 2 is indicated above the staff.

Musical staff with treble clef, C major key signature, and common time signature. Measure number 5 is indicated above the staff.

Musical staff with treble clef, C major key signature, and common time signature. Measure number 10 is indicated above the staff. The staff ends with a double bar line and the text "Da capo." and "Recitat. tacet." to the right.

Chorus. Fugato.

NB. Clarino II. ex C.

Musical staff with treble clef, C major key signature, and common time signature. The first measure contains the text "Alleluja." below it. Measure number 4 is indicated above the staff.

Musical staff with treble clef, C major key signature, and common time signature. Measure numbers 2 and 6 are indicated above the staff.

Musical staff with treble clef, C major key signature, and common time signature. Measure number 8 is indicated above the staff.

Musical staff with treble clef, C major key signature, and common time signature.

OFFERTORIUM V.

De Beata Virgine Maria.

Clarino II. Ex G.

Musical staff with treble clef, C major key signature, and common time signature. The staff contains the text "Recitat. & Aria tacent." between two double bar lines.

Chorus. 10

Musical staff with treble clef, C major key signature, and common time signature. The first measure contains the text "Da mihi." below it.

Musical staff with treble clef, C major key signature, and common time signature. Measure number 1 is indicated above the staff.

[Aa] 2



5 I II  
5  
I 6 2  
I 4

### OFFERTORIUM VII.

De Apostolis vel Martyribus.

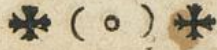
Clarino vel Cornu II. Ex D.

Aria & Recitat. tacent.

Chorus.

O ter felices.

4 6 4



### OFFERTORIUM VIII.

De Confessore.

Cornu II. Ex F.

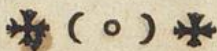
Chorus.

Faitelli XII. Offertoria.

[Bb]

Clarino II.





### OFFERTORIUM IX.

De Sancto, vel Sancta.

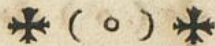
*Tromba II. Ex F.*

NR. Cornu II. ex F.      Recitat. tacet.

Aria.

Non nisi.

Recit. 5



Chorus.  
 NB. Clarino II. ex C.   
 Torrenti.

Musical notation for the Chorus section, consisting of ten staves. The notation includes various rhythmic values, rests, and dynamic markings such as '1', '3', '5', '9', and '14'.

### OFFERTORIUM X.

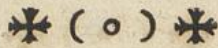
De Virg. Martyre, vel non Marty. vel in Solennit. cujuscunq; Sancti.

Clarino II.

Aria. Vivace.  
 Altae mentes.

Musical notation for the Aria section, consisting of four staves. The notation includes a C-clef, a 2/4 time signature, and various rhythmic patterns. It includes markings for '1', '3', '7', '2', '4', '14', and 'Da capo. Recit. tacet.' followed by a double bar line and a final note.

[Bb] 2



Chorus. 2 Allegro.

Claffica.

Musical score for Clarinet (Claffica) consisting of six staves. The notation includes various rhythmic values, slurs, and articulation marks. Measure numbers 1, 2, 4, 6, and 2 are indicated above the staves.

### OFFERTORIUM XI.

De Tempore.

Cornu II. Ex F.

A musical staff with a double bar line in the center. The text "Aria & Recitat. tacent." is written across the staff.

Chorus. 9 Vivace. 1

Justus es Domine!

Musical score for Chorus in 2/4 time, marked "Vivace". The score consists of five staves. It features a variety of rhythmic patterns, including eighth and sixteenth notes, and rests. Measure numbers 1, 4, 3, 31, 5, 8, and 1 are indicated above the staves.

FINIS.

Handwritten text in a cursive script, likely a library stamp or inventory record, running vertically along the left edge of the page. The text is partially obscured by the binding and is difficult to decipher.



