

Badische Landesbibliothek Karlsruhe

Digitale Sammlung der Badischen Landesbibliothek Karlsruhe

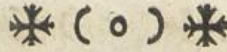
**Petra denùo percussa stillat copiosé Quintum opus
Marianum**

Geisler, Benedict

Augustae Vindelicorum, 1744

Missa II.

urn:nbn:de:bsz:31-34170



S *Adagio.*
Anctus.

O *Adagio.*
Sanna.

B *Adagio.*
Eneclctus.

A *Solo.* *IO*
Gnus Dei tacet. Agnus Dei Tutti ut Kyrie *Adagio.* *3* Dona ut Kyrie *Allegro.* *4*



MISSA II.

K *Adagio.*
Yrie.

Allegro. I
Kyrie.

Musical staff with treble clef, key signature of two flats, and various rhythmic values including eighth and sixteenth notes.

Musical staff with treble clef, key signature of two flats, and various rhythmic values including eighth and sixteenth notes.

Musical staff with treble clef, key signature of two flats, and various rhythmic values including eighth and sixteenth notes. Tempo marking: *Adagio.*

Musical staff with treble clef, key signature of two flats, and various rhythmic values including eighth and sixteenth notes. Tempo marking: *Allabreve.* Lyrics: *T in terra.*

Musical staff with treble clef, key signature of two flats, and various rhythmic values including eighth and sixteenth notes. Trill marking: *tr.*

Musical staff with treble clef, key signature of two flats, and various rhythmic values including eighth and sixteenth notes. Tempo marking: *Adagio.*

Musical staff with treble clef, key signature of two flats, and various rhythmic values including eighth and sixteenth notes. Fingerings: *I I 3 I I*

Musical staff with treble clef, key signature of two flats, and various rhythmic values including eighth and sixteenth notes. Fingerings: *2 I I 3*

Musical staff with treble clef, key signature of two flats, and various rhythmic values including eighth and sixteenth notes.

Musical staff with treble clef, key signature of two flats, and various rhythmic values including eighth and sixteenth notes.

Musical staff with treble clef, key signature of two flats, and various rhythmic values including eighth and sixteenth notes.

Musical staff with treble clef, key signature of two flats, and various rhythmic values including eighth and sixteenth notes. Dynamics: *P. I*

Musical staff with treble clef, key signature of two flats, and various rhythmic values including eighth and sixteenth notes. Dynamics: *I*. Tempo marking: *verte cito.*



Atrem.



Et incarnatus.





Crucifixus.

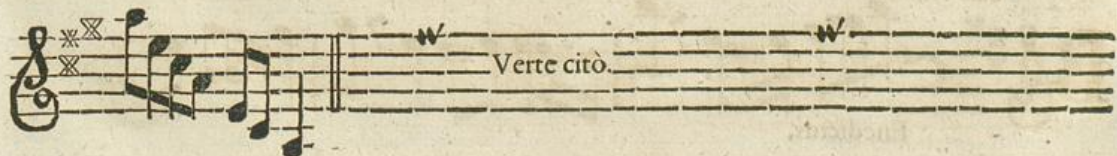


Et resurrexit.



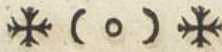
Adagio.

Anctus.



Verte cito.





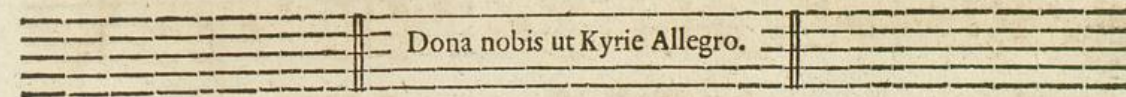
Allegro:
Pleni.

Unifono.
Sanna. p. f.

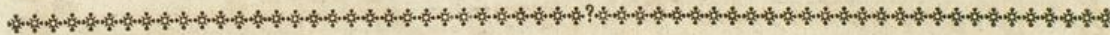
Solo Violino.
Eneclctus.



Gnus Dei.



Dona nobis ut Kyrie Allegro.



MISSA III.

