

**Badische Landesbibliothek Karlsruhe**

**Digitale Sammlung der Badischen Landesbibliothek Karlsruhe**

**XXXII. HYMNI VESPERTINI DE OMNIBUS CUM DOMINI TUM  
SANCTORUM PRAECIPUIS FESTIS PER ANNUM  
OCCURRENTIBUS**

**Haas, Ildefons**

**Augustae Vindelicorum, 1764**

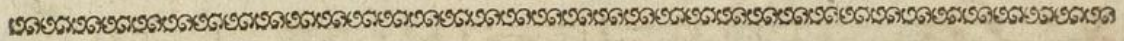
Missa III

**urn:nbn:de:bsz:31-34241**





piano                      forte                      piano  
 forte                      piano                      forte  
 piano                      forte  
 pianissimo



### MISSA III.

*Andante.*

**K** yrie.

*Allegro molto.*

p.                      forte





tr.  
piano  
forte  
tr. piano  
forte  
tr.  
piano  
forte  
Tutti.  
tr.





tr.  
piano  
forte tr.

**G** *Allegro.*  
loria. - piano forte

piano  
forte  
piano





*piano*

*forte*

*piano*

*tr.*

♯F 2





*forte*

*piano*

*forte*

*Allegro.*

**P** *atrem.*



The first three staves of the page contain musical notation in G major (one sharp) and 4/4 time. The first staff begins with a treble clef and a key signature of one sharp (F#). The music consists of a series of eighth and sixteenth notes, with some rests and dynamic markings. The second and third staves continue the melodic line with similar rhythmic patterns.

*Adagio.*

The fourth staff is marked *Adagio.* and features a 3/4 time signature. The music is characterized by a slower tempo and includes trills (tr.) and slurs. The notes are more widely spaced compared to the previous staves.

Et incarnatus.

The fifth staff begins with the text *Et incarnatus.* and contains musical notation with trills (tr.) and slurs. The tempo remains *Adagio*. The notation includes various rhythmic values and articulation marks.

The sixth staff continues the musical piece and is marked *piano*. It features trills (tr.) and slurs, with a more active rhythmic pattern than the previous staves.

The seventh staff contains musical notation with slurs and various rhythmic values. The tempo is still *Adagio*.

*forte*

The eighth staff is marked *forte* and features a more rhythmic and active passage with slurs and trills (tr.).

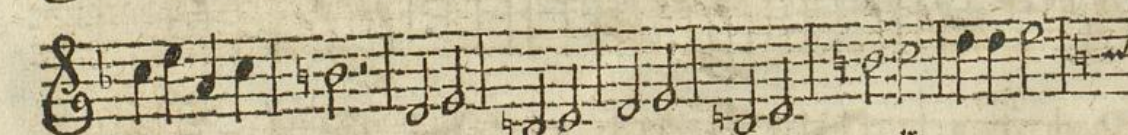
*piano*

The ninth staff is marked *piano* and contains musical notation with slurs and trills (tr.).

*piano*

The tenth and final staff on the page is marked *piano* and concludes the musical passage with slurs and trills (tr.).







Five staves of musical notation in G major, 4/4 time. The first four staves contain a melodic line with eighth and sixteenth notes. The fifth staff concludes with a double bar line and a fermata.

*Largo.*  
**S** anctus.

Musical notation for the beginning of the 'Sanctus' section, marked 'Largo'. It starts with a large 'S' and a common time signature 'C'.

*piano*  
*Allegro.*

Musical notation for the beginning of the 'Allegro' section, marked 'piano' and 'Allegro'. It features a 3/4 time signature and a key signature change to G minor.

*forte*

Five staves of musical notation for the 'Allegro' section, marked 'forte'. The music is characterized by rapid sixteenth-note passages and dynamic markings.





Musical staff with treble clef, key signature of one flat, and a melodic line. Dynamics include *piano*.

Musical staff with treble clef, key signature of one flat, and a melodic line. Dynamics include *forte*.

Musical staff with treble clef, key signature of one flat, and a melodic line. Tempo marking: *Andante molto.* Large initial letter **B**. Text: *enedictus.*

Musical staff with treble clef, key signature of one flat, and a melodic line. Dynamics include *piano*.

Musical staff with treble clef, key signature of one flat, and a melodic line.

Musical staff with treble clef, key signature of one flat, and a melodic line. Dynamics include *forte*.

Musical staff with treble clef, key signature of one flat, and a melodic line.

Musical staff with treble clef, key signature of one flat, and a melodic line. Dynamics include *piano* and *tr.*

Musical staff with treble clef, key signature of one flat, and a melodic line.

Musical staff with treble clef, key signature of one flat, and a melodic line.

Musical staff with treble clef, key signature of one flat, and a melodic line. Tempo marking: *Allegro.* Large initial letter **O**. Dynamics include *fanna. forte*.





*piano*

*forte*

*Adagio. piano*

**A** gnus Dei.

*forte*

Dona nobis ut Kyrie Allegro.

