

Badische Landesbibliothek Karlsruhe

Digitale Sammlung der Badischen Landesbibliothek Karlsruhe

**Acratismus pro honore Dei ex escis sonorae pietatis
praeparatus ...**

Jacob, Gunther Václav

Pragae, 1725

Requiem Herile

urn:nbn:de:bsz:31-34366



REQUIEM HERILE.

obla. in
ALTO VIOLA.



Requiem.

Gravt.

Requiem.

Te decet hymnus.

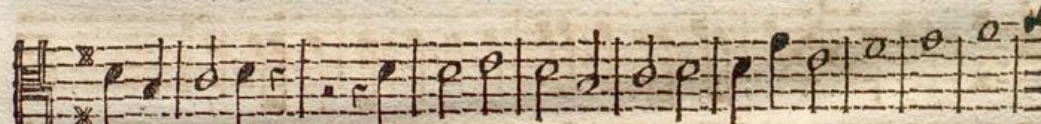
Alto Viol.



Exaudi Domine.



Kyrie.



Dies iræ.

Dies iræ.

Handwritten musical score for the first section, consisting of four staves. The notation includes various rhythmic values, beams, and rests, typical of 18th-century manuscript notation.

Quantus tremor.

Handwritten musical score for the 'Quantus tremor' section, consisting of eight staves. The notation is dense with many notes and beams, indicating a fast or tremulous passage.

Andante.

adag.

Handwritten musical score for the 'Andante' and 'adag.' sections, consisting of one staff. It begins with a large C-clef and contains a few notes, indicating a slower tempo.

Tuba.

Handwritten musical score for the 'Tuba' section, consisting of one staff. It begins with a C-clef and contains several notes, indicating a specific instrument part.

Mors.

Handwritten musical score for the 'Mors' section, consisting of one staff. It begins with a C-clef and contains several notes, indicating a specific instrument part.

Allegro.

Adag.

Andante.

Libera.

adagio.

Poco alleg.

Adag.

Domine.
Domine.

Foco allegro.

adag.

Andante.

Alto Viol.

Adagio,

Quam olim.

Sanctus.

Adag.

Sanctus.

Pleni.

Handwritten musical score for the first section of the piece, consisting of five staves of music. The notation includes various rhythmic values and clefs.

Ofanna. **O**fanna.

Handwritten musical score for the 'Ofanna' section, consisting of five staves of music. The notation includes various rhythmic values and clefs.

Agnus. **A**gnus.

Handwritten musical score for the 'Agnus' section, consisting of two staves of music. The notation includes various rhythmic values and clefs.



Lux æterna.



Adag.

