

Badische Landesbibliothek Karlsruhe

Digitale Sammlung der Badischen Landesbibliothek Karlsruhe

**Acratismus pro honore Dei ex escis sonorae pietatis
praeparatus ...**

Jacob, Gunther Václav

Pragae, 1725

Domine

urn:nbn:de:bsz:31-34366

Seven staves of musical notation in G major, 3/4 time. The music features complex rhythmic patterns, including triplets and sixteenth notes. The first staff begins with a treble clef and a key signature of one sharp (F#). The notation is dense and intricate, typical of a Baroque or Classical instrumental piece.

Domine. *Allegretto.*

A musical staff for the vocal part of 'Domine'. It starts with a treble clef, a key signature of one sharp (F#), and a 3/4 time signature. The tempo is marked 'Allegretto'. The notation includes a double bar line and a repeat sign.

Domine.

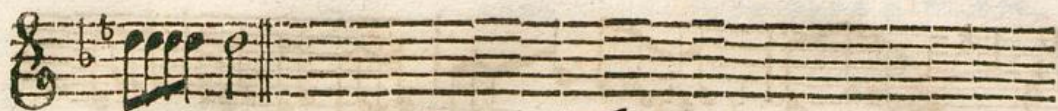
A musical staff with a treble clef and a key signature of one sharp (F#). The dynamic marking 'piano.' is placed above the staff. The notation consists of a series of eighth and sixteenth notes.

A musical staff with a treble clef and a key signature of one sharp (F#). The dynamic marking 'fort.' is placed below the staff. The notation continues with eighth and sixteenth notes.

A musical staff with a treble clef and a key signature of one sharp (F#). The dynamic marking 'piano.' is placed above the staff. The notation continues with eighth and sixteenth notes.

A musical staff with a treble clef and a key signature of one sharp (F#). The dynamic marking 'fort.' is placed above the staff. The notation continues with eighth and sixteenth notes.

This page contains a handwritten musical score consisting of 14 staves. The notation is in a single system, likely for a piano or similar instrument. The key signature has one flat (B-flat), and the time signature is common time (C). The score is marked with various dynamics: *piano*, *fort.*, and *Adag. Staccato.*. The music features a variety of rhythmic patterns, including eighth and sixteenth notes, and rests. There are several repeat signs (double bar lines with dots) and a final double bar line at the end of the piece. The handwriting is clear and professional, typical of a composer's manuscript.



Quoniam. 
Quoniam.



Viol. I.

G