

Badische Landesbibliothek Karlsruhe

Digitale Sammlung der Badischen Landesbibliothek Karlsruhe

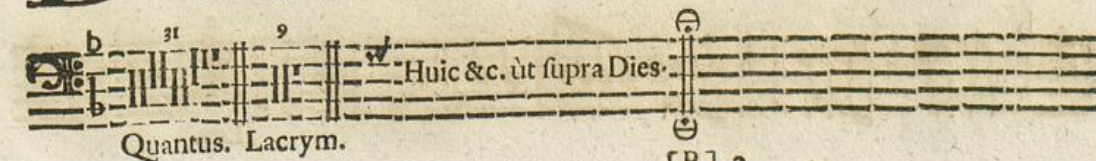
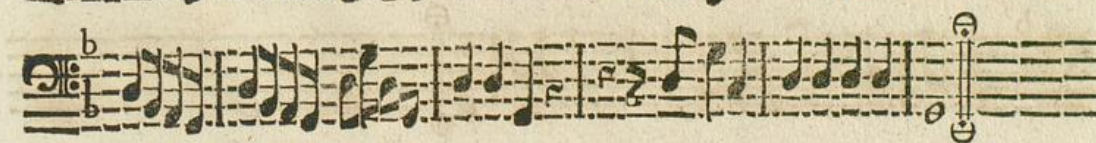
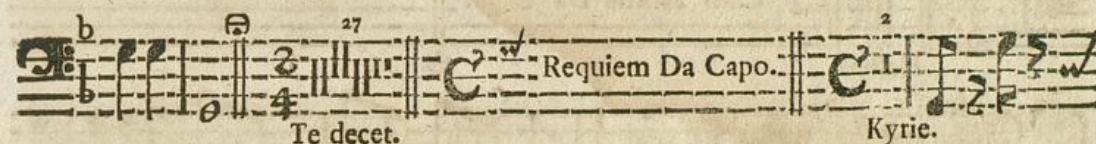
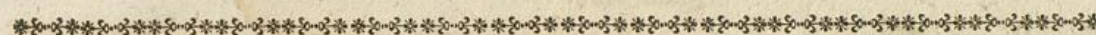
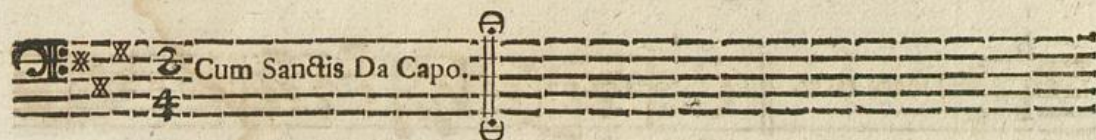
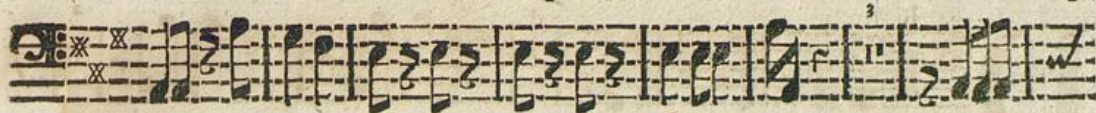
**Clavis musica fidelibus purgantibus caeli januam aperiens
in VI. missis defunctorum et II. libera civico-ruralibus,
stylo moderno, suavi, ac facili nec non brevi elaboratis**

Kobrich, Johann Anton

Augustae Vindelicorum, 1757

4.

urn:nbn:de:bsz:31-36094



[B] 2

D omine.

Musical staff with a treble clef, a key signature of one flat (B-flat), and a 3/4 time signature. It begins with a large initial 'D' and contains several measures of music with various note values and rests.

Musical staff with a treble clef, a key signature of one flat, and a 3/4 time signature. It continues the melody from the previous staff.

Libera tacet.

Quam olim.

Musical staff with a treble clef, a key signature of one flat, and a 3/4 time signature. It includes a section marked 'Libera tacet.' followed by music for 'Quam olim.' with a first ending bracket.

Musical staff with a treble clef, a key signature of one flat, and a 3/4 time signature. It continues the musical piece.

Cum Sanctis Da Capo.

Hofias.

Musical staff with a treble clef, a key signature of one flat, and a 3/4 time signature. It features a section marked 'Cum Sanctis Da Capo.' and ends with a double bar line and repeat sign. The word 'Hofias.' is written below.

S anctus.

Musical staff with a treble clef, a key signature of one flat, and a 3/4 time signature. It begins with a large initial 'S' and contains several measures of music.

Musical staff with a treble clef, a key signature of one flat, and a 3/4 time signature. It continues the melody for 'Sanctus.'

Benedictus tacet.

Ofanna.

Musical staff with a treble clef, a key signature of one flat, and a 3/4 time signature. It includes a section marked 'Benedictus tacet.' followed by music for 'Ofanna.' with a first ending bracket.

Musical staff with a treble clef, a key signature of one flat, and a 3/4 time signature. It continues the musical piece.

Musical staff with a treble clef, a key signature of one flat, and a 3/4 time signature. It continues the musical piece.

A gnus Dei.

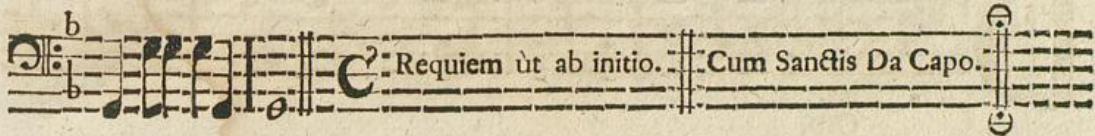
Musical staff with a treble clef, a key signature of one flat, and a 3/4 time signature. It begins with a large initial 'A' and contains several measures of music.

Lux.

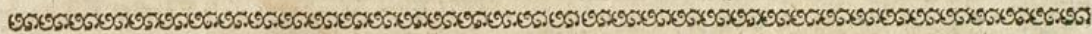
Musical staff with a treble clef, a key signature of one flat, and a 3/4 time signature. It contains several measures of music, ending with a double bar line and repeat sign. The word 'Lux.' is written below.



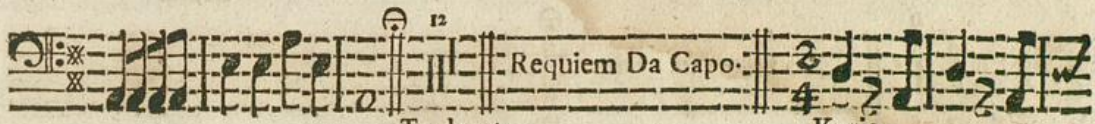
Cum Sanctis.



Requiem ut ab initio. Cum Sanctis Da Capo.



- equiem. | |



Requiem Da Capo.

Te decet.

Kyrie.

