

Badische Landesbibliothek Karlsruhe

Digitale Sammlung der Badischen Landesbibliothek Karlsruhe

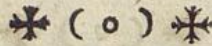
Eucharisticon complectens IV offertoria ...

Königsperger, Marianus

Augustae Vindelicorum, 1748

II. Pange lingua

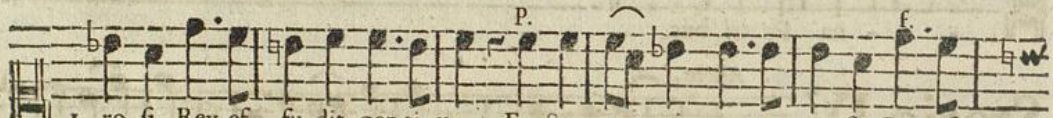
urn:nbn:de:bsz:31-36113



1. Pange lingua glo-ri-o fi, cor po-ri-s my-ste-ri-um, sangui-
2. No-bis da-tus no-bis na-tus, ex in-ta-cta vir-gi-ne, & in
3. In su-premæ no-cte Coe-næ, recum-bens cum fra-tri-bus, ob ser-
4. Verbum ca-ro pa-nem ve-rum, ver-bo car-nem ef-fi-cit, fit que
5. Tan-tum er-go Sa-cra-mentum, ve-ne-re-mur cer-nu-i, & an-
6. Ge-ni-to-ri ge-ni-to-que, laus & Ju-bi-la-ti-o, sa-lus



1. nis-que pre-ti-o-fi quem in mundi pre-ti-um, fructus ven-tris ge-ne-
2. mundo con-ver-sa-tus ip-sar so-ver-bi se-mi-ne, su-i mo-ras in co-
3. va-ta le-ge ple-ne ci-bis in le-ga-li bus, ci-bum tur-bæ du-o-
4. sangui-s Chri-sti me-rum & fi-sen-sus def-fi-cit, ad fir-man-dum cor sin-
5. ti-quum do-cu-mentum no-vo ce-dat ri-tu-i, præstet fi-des sup-ple-
6. ho-nor vir-tus quo-que fit & be-ne-di-cti-o, pro-ce-den-ti ab u-

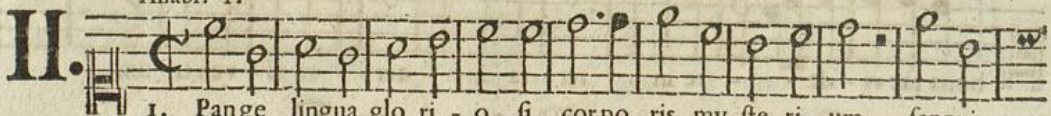


1. ro fi, Rex ef-fu-dit gen-ti-um. Fructus ven-tris ge-ne-ro fi, Rex ef-
2. la-tus, mi-ro-clausit or-di-ne. Su-i mo-ras in co-la-tus, mi-ro
3. de-næ, se-dat su-is ma-ni-bus. Ci-bum tur-bæ du-o-de-næ, se-dat
4. ce-rum, so-la-fi-des suf-fi-cit. Ad fir-man-dum cor sin-cerum, so-la
5. men-tum, sen-su-um de-fe-ctu-i. Præstet fi-des sup-ple-mentum, sen-su-
6. tro-que, compar-fit lau-da-ti-o. Pro-ce-den-ti ab u-tro-que, compar-

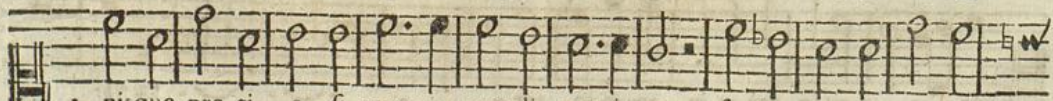


1. fu-dit gen-ti-um. Amen.
2. clausit or-di-ne.
3. su-is ma-ni-bus.
4. fi-des suf-fi-cit.
5. um de-fe-ctu-i.
6. fit lau-da-ti-o.

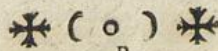
Allabr. T.



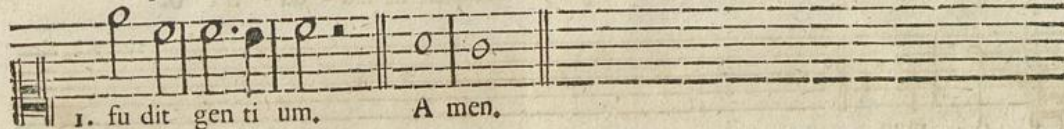
1. Pange lingua glo-ri-o fi, cor-po-ri-s my-ste-ri-um, sangui-
2. No-bis da-tus no-bis na-tus, ex in-ta-cta vir-gi-ne, & in
3. In su-premæ no-cte coe-næ, recum-bens cum fra-tri-bus, ob ser-
4. Verbum ca-ro pa-nem ve-rum, ver-bo car-nem ef-fi-cit, fit que
5. Tan-tum er-go Sa-cra-mentum, ve-ne-re-mur cer-nu-i, & an-
6. Ge-ni-to-ri ge-ni-to-que, laus & Ju-bi-la-ti-o, sa-lus



1. nis-que pre-ti-o-fi quem in mundi pre-ti-um, fructus ven-tris ge-ne-
2. mundo con-ver-sa-tus ip-sar so-ver-bi se-mi-ne, su-i mo-res in co-
3. va-ta le-ge ple-ne ci-bis in le-ga-li bus, ci-bum tur-bæ du-o-
4. sangui-s Chri-sti me-rum & fi-sen-sus def-fi-cit, ad fir-man-dum cor sin-
5. ti-quum do-cu-mentum no-vo ce-dat ri-tu-i, præstet fi-des sup-ple-
6. ho-nor vir-tus quo-que fit & be-ne-di-cti-o, pro-ce-den-ti ab u-



1. ro fi, Rex ef- fu dit gen ti um, fru ctus ventris ge ne- ro fi, Rex ef-
 2. la tus, mi ro clau sit or di ne, su - i mo ras in- co- la tus, mi ro
 3. de næ, se dat su is ma ni bus, cibum tur bæ du o - de næ, se dat
 4. cerum, so la fi des suf fi cit, ad fir mandum cor sin - cerum, so la
 5. mentum, sen su um de fe ctu - i, præstet fi des sup ple- mentum, sen su-
 6. troque, compar fit lau da ti - o, pro ce den ti ab u - troque, compar



1. fu dit gen ti um, A men.
 2. clau sit or di ne.
 3. su is ma ni bus.
 4. fi des suf fi cit.
 5. um de- fe ctu i.
 6. fit lau da ti o.

Gravè II S.



1. Pan- ge lin- gua glo - ri - o fi, cor - po-
 2. No - bis da - tus no - bis na tus, ex in-
 3. In su - pre mæ no - cte cœ næ, re - cum-
 4. Ver - bum ca - ro pa - nem verum, ver - bo
 5. Tan - tum er - go Sa - cra mentum, ve - ne-
 6. Ge - ni - to - ri ge - ni - to que, laus &



1. ris my ste - ri um, Pan - ge lin - gua glo - ri - o fi, cor po ris my-
 2. ta - cta vir - gi ne, No - bis da - tus no - bis na tus, ex in - ta - cta
 3. bens cum fra - tri bus, In su pre - mæ no - cte cœ næ, recumbens cum
 4. car - nem ef - fi - cit, Ver - bum ca - ro pa - nem verum, ver bo car - nem
 5. re - mur cer - nu - i, Tan - tum er - go Sa - cra mentum, ve ne re - mur
 6. Ju - bi la - ti - o, Ge - ni to - ri ge - ni to que, laus & Ju - bi



1. ste - ri um, sangui nis que pre ti - o - fi quem in mun - di pre - ti-
 2. vir - gi ne, & in mundo conver - fa tus sparso ver - bi fe - mi-
 3. fra - tri bus, ob ser va tâ le ge plenè ci bis in le - ga - li-
 4. ef - fi cit, fit que sanguis Christi merum & si sen - sus def - fi-
 5. cer - nu - i, & an ti quum do cu mentum no vo ce - dat ri - tu-
 6. la - ti - o, fa lus ho nor virtus quoque fit & be - ne - di - cti-



1. um, fru ctus ventris ge ne - ro fi, Rex ef - fu dit gen - ti um,
 2. ne, su i mo ras in co - la tus, mi ro clau sit or - di ne,
 3. bus, cibum tur bæ du o - de næ, se dat su is ma - ni bus,
 4. cit, ad fir mandum cor sin - cerum, so la fi des suf - fi cit,
 5. i, præstet fi des supple - mentum, sen su - um de fe - ctu i,
 6. o, pro ce - denti ab u - troque, compar fit lau - da - ti o,

R. F. Königspurger Eucharisticon de Ven. Sacram. B Canto.