

Badische Landesbibliothek Karlsruhe

Digitale Sammlung der Badischen Landesbibliothek Karlsruhe

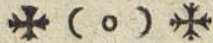
Eucharisticon complectens IV offertoria ...

Königsperger, Marianus

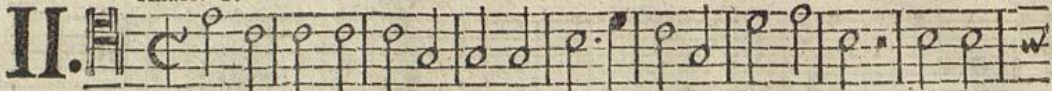
Augustae Vindelicorum, 1748

III. Pange lingua

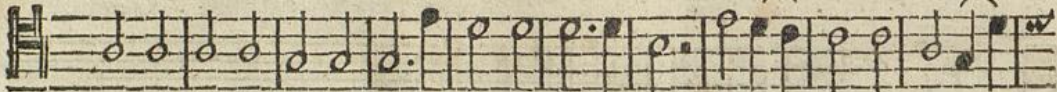
urn:nbn:de:bsz:31-36113



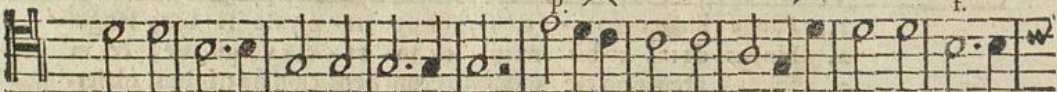
Allabr. T.



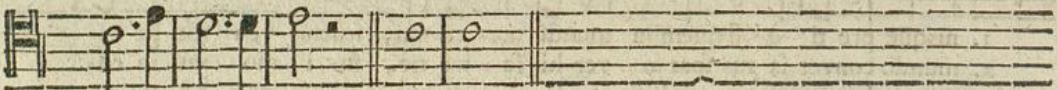
1. Pange lingua glo - ri - o - si, corpo - ris my ste ri - um, sangui -
2. Nobis da tus no bis na tus, ex in - ta cta vir gi - ne, & in
3. In su - premæ no cte cœnæ, recumbens cum fra tri bus, ob ser -
4. Verbum ca ro pa nem ve rum, verbo car nem ef fi - cit, fit que
5. Tantum er go Sa cra mentum, ve ne re - mur cer nu - i, & an -
6. Ge ni - to ri ge ni - to que, laus & Ju bi - la ti - o, sa lus



1. nisque pre ti - o - si quem in mundi pre - ti um, fru ctus ventris ge ne -
2. mundo conver - sa tus spar so ver bi se - mi ne, su - i mo ras in co -
3. va ta le ge ple ne ci - bis in le - ga - li bus, ci bum turbæ du o -
4. sanguis Christi merum & si sen sus de - fi - cit, ad fir - mandum cor fin -
5. ti quum do cu mentum no vo ce dat ri - tu - i, præstet fi - des supple -
6. honor vir tus quoque fit & be ne - di - cti - o, pro ce - den ti ab u -



1. ro si, Rex ef - fu dit gen ti um, fru ctus ventris ge ne - ro si, Rex ef -
2. la tus, mi ro clau fit or di ne, su - i mo ras in co - la tus, mi ro
3. de næ, se - dat su is ma ni bus, ci bum turbæ du o - de næ, se dat
4. cerum, so la fi des suf fi cit, ad fir - mandum cor fin - cerum, so la
5. mentum, sen su um de fe ctu - i, præstet fi des supple - mentum, sen su -
6. troque, compar fit lau da ti - o, pro ce - den ti ab u - troque, compar



1. fu dit gen ti um,
2. clau fit or di ne.
3. su is ma ni bus.
4. fi des suf fi cit.
5. um de - fe ctu i.
6. fit lau da ti o.

A men.



1. Pan - ge lin gua glo - ri - o si, cor po ris my -
2. No - bis da tus no - bis natus, ex in - ta - cta
3. In su - premæ no - cte cœnæ, recumbens cum
4. Ver - bum ca ro pa - nem ve rum, ve bo car - nem
5. Tan - tum er go Sa - cra mentum, ve ne - re - mur
6. Ge - ni - to ri ge - ni to que, laus & Ju - bi -



1. ste - ri um, sangui nis que pre ti - o - si quem in mun - di pre - ti -
2. vir - gi ne, & in mundo conver sa tus spar so ver - bi se - mi -
3. fra - tri bus, ob ser va tâ le ge plenè ci bis in le - ga - li -
4. ef - fi cit, fit que sanguis Christi merum & si sen - sus de - fi -
5. cer - nu - i, & an ti quum do cu mentum no vo ce - dat ri - tu -
6. la - ti - o, sa lus honor vir tus quoque fit & be - ne - di - cti -



1. um, fru-ctus ventris ge-ne-ro fi, Rex ef-fu-dit gen-ti um,
 2. ne, su-i mo-ras in-co-la tus, mi-ro clau-sit or-di-ne,
 3. bus, ci-bum tur-bæ du-o de-næ, se-dat su-is ma-ni-bus,
 4. cit, ad fir-mandum cor-sin-cerum, so-la fi-des suf-fi-cit,
 5. i, præ-stet fi-des sup-ple-mentum, sen-su-um de-fe-cti-i,
 6. o, pro-ce-den-ti ab-u-tro-que, compar-fit lau-da-ti-o,



1. fru-ctus ventris ge-ne-ro fi, Rex ef-fu-dit gen-ti um. A-men.
 2. su-i mo-ras in-co-la tus, mi-ro clau-sit or-di-ne.
 3. ci-bum tur-bæ du-o de-næ, se-dat su-is ma-ni-bus.
 4. ad fir-mandum cor-sin-cerum, so-la fi-des suf-fi-cit.
 5. præ-stet fi-des sup-ple-mentum, sen-su-um de-fe-cti-i.
 6. pro-ce-den-ti ab-u-tro-que, compar-fit lau-da-ti-o.

Gravè. 16

T.



1. Pan-ge lin-gua glo-ri-o fi, cor-po-ris my-
 2. No-bis da-tus no-bis na-tus, ex-in-ta-cta
 3. In-su-pre-mæ no-cte coenæ, re-cum-bens cum
 4. Ver-bum ca-ro pa-nem verum, ver-bo-car-nem
 5. Tan-tum er-go Sa-cra-mentum, ve-ne-re-mur
 6. Ge-ni-to-ri ge-ni-to-que, laus & ju-bi-



1. ste-ri-um, san-gui-nisque pre-ti-o fi, quem in mundi pre-ti-
 2. vir-gi-ne, & in mundo con-ver-sa-tus, spar-so ver-bi-se-mi-
 3. fra-tri-bus, ob-ser-va-ta le-ge-plenè, ci-bis in-le-ga-li-
 4. ef-fi-cit, fit-que sangui-s Chri-sti-merum, & si sensus de-fi-
 5. cer-nu-i, & an-ti-quum do-cu-mentum no-vo-ce-dat ri-tu-
 6. la-ti-o, sa-lus honor vir-tus quo-que, fit & be-ne-di-cti-



1. um, fructus ventris ge-ne-ro fi, Rex ef-fu-dit gen-ti um, fructus
 2. ne, su-i mo-ras in-co-la tus mi-ro clau-sit or-di-ne, su-i
 3. bus, ci-bum tur-bæ du-o de-næ se-dat su-is ma-ni-bus, ci-bum
 4. cit, ad fir-mandum cor-sin-cerum so-la fi-des suf-fi-cit, ad fir-
 5. i, præ-stet fi-des sup-ple-mentum, sen-su-um de-fe-cti-i, præ-stet
 6. o, pro-ce-den-ti ab-u-tro-que compar-fit lau-da-ti-o, pro-ce-



1. ventris ge-ne-ro fi, Rex ef-fu-dit gen-ti um. A-men.
 2. mo-ras in-co-la tus, mi-ro clau-sit or-di-ne.
 3. tur-bæ du-o de-næ, se-dat su-is ma-ni-bus.
 4. mandum cor-sin-cerum, so-la fi-des suf-fi-cit.
 5. fi-des sup-ple-mentum, sen-su-um de-fe-cti-i.
 6. den-ti ab-u-tro-que, compar-fit lau-da-ti-o.

R. F. Königspurger *Evcharisticon de Ven. Sacram.*

Bbb

Tenore.