

Badische Landesbibliothek Karlsruhe

Digitale Sammlung der Badischen Landesbibliothek Karlsruhe

Decachordon sive X. missae solemnes

Königsperger, Marianus

Pedeonti, 1741

IV. Missa S. P. Benedictj

urn:nbn:de:bsz:31-36108

IV. Missa. S. P. Benedictj.

Violino. 2.

This page contains a handwritten musical score for the second violin part of a Mass. The score is written on ten systems of two staves each. The first system begins with the tempo marking "Kyrie." and a common time signature. The second system includes the tempo marking "Altab: S" and "Kyri:". The music consists of various rhythmic patterns, including eighth and sixteenth notes, and rests. There are several dynamic markings such as "p" (piano) and "f" (forte) throughout the piece. The notation includes slurs, ties, and some accidentals. The paper shows signs of age, with some staining and wear.

The first section of the manuscript consists of ten staves of handwritten musical notation. The notation includes various clefs (treble and bass), time signatures, and complex rhythmic patterns with many sixteenth and thirty-second notes. There are several accidentals (sharps and flats) and dynamic markings throughout the section.

Gloria.

The Gloria section is marked with the word "Gloria." and consists of four staves of music. It features a complex, rhythmic texture with many sixteenth notes and some triplet markings. The notation is dense and intricate.

Adag. S.

Domine.

The Domine section is marked with "Adag. S." and "Domine." and consists of two staves of music. The tempo is slower, and the notation is more spacious than the previous sections, with a focus on sustained notes and slower rhythmic values.

*
*e.

A handwritten musical score on 14 staves. The notation includes treble clefs, a key signature of one sharp (F#), and a common time signature (C). The score features a variety of rhythmic patterns, including sixteenth and thirty-second notes, and rests. Dynamics such as *f* (forte), *p* (piano), and *pp* (pianissimo) are used throughout. Performance markings include *Adagi* (Adagio) and *Alfab. S.* (Allegro). The text *quitol:* and *Quon:* appears at the end of the score. The manuscript shows signs of age, with some ink bleed-through and staining.

A handwritten musical score on 15 staves. The notation includes treble clefs, a key signature of one sharp (F#), and a common time signature (C). The score features a variety of rhythmic patterns, including sixteenth and thirty-second notes, and rests. Dynamics such as *f* (forte), *p* (piano), and *f* are indicated. The marking *Cum lana:* appears on the fourth staff. The piece concludes with a *bis.* marking on the final staff.

*
*c.2.



Alleg.

Patrem.

Adag. s.

Et in Car.

Crucif:



allab: *mi*

Et Resur:

Musical notation on a staff.

Musical notation on a staff.

Musical notation on a staff.

Musical notation on a staff.

Musical notation on a staff.

Musical notation on a staff.

Musical notation on a staff.

Musical notation on a staff.

Musical notation on a staff.

allab:
Sanctus.

Musical notation on a staff.

Musical notation on a staff.

Musical notation on a staff.

*
*f.

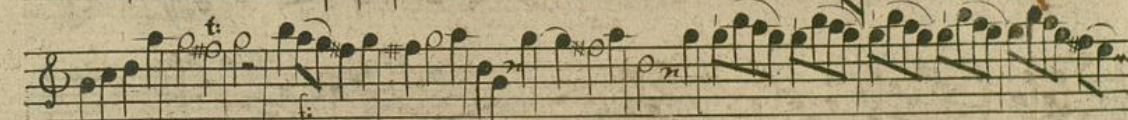
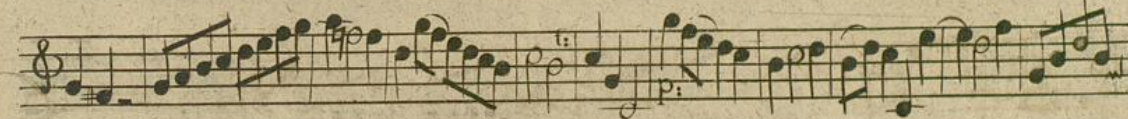


andante.
Bened.

for:

Presto.
O. ianna.





*
* f. 2.