

Badische Landesbibliothek Karlsruhe

Digitale Sammlung der Badischen Landesbibliothek Karlsruhe

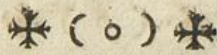
VI. Liturgiae canorae sive sex missae praemissis decem solemnioribus

Königsperger, Marianus

Augustae Vindelicorum, 1743

Missa V. S. Theclae Mart.

urn:nbn:de:bsz:31-36121



Presto.

do na nobis pa - cem. Do na no bis pa - cem do na no bis pa -
 cem dona nobis pa - cem do na no bis pa - cem do na no bis pa cem
 do na nobis pa - cem I dona nobis pa - cem dona no bis pa -
 cem dona no bis pa - cem pa - cem.

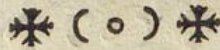
MISSA V. S. Theclæ Mart.

Adagio.

K Y - ri e e - lei - - - fon e - lei -
 - fon. 8 Allabrevè. Ky - ri - e e - lei - - - tr.
 O - fan na &c.
 fon e lei - - - fon e -
 lei - - - fon e lei -
 - - - fon e -
 lei -
 - fon e - lei - - fon,

R. F. Königsperger *Missa VI.*

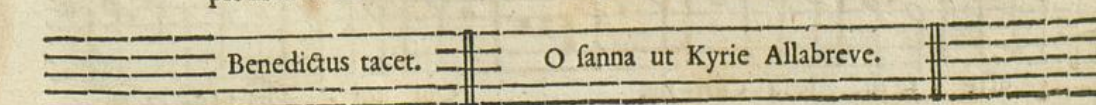
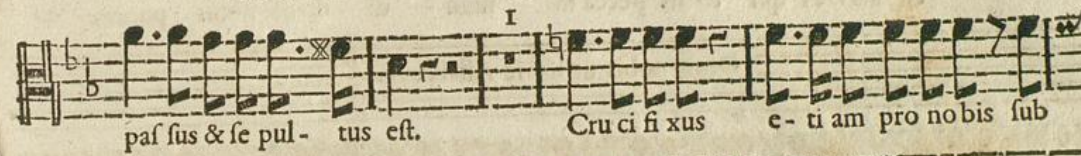
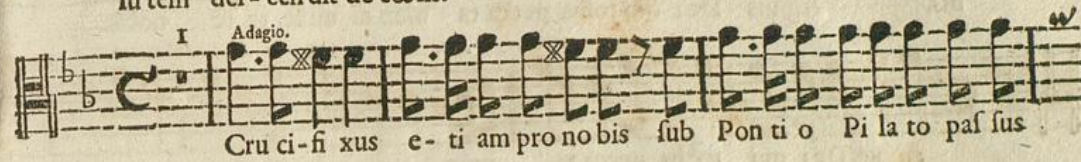
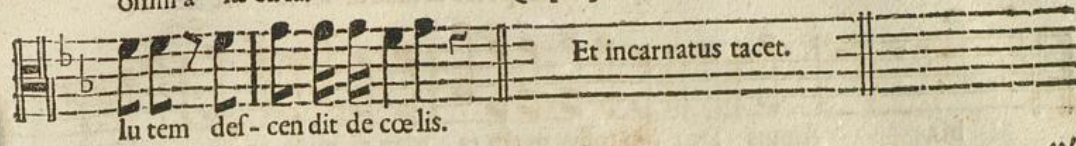
E Alto.

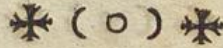


Gravè.

E T in ter ra pax ho - mi ni bus bonæ bonæ vo lun - ta tis lau - damus te
 be ne - di ci mus a do - ra mus te glo ri - fi ca mus te. Gra ti as
 a gi mus ti - bi pro pter ma gnam glo ri am tu - am. Do mi ne De us
 Rex cœ - le stis Deus Pa - ter om ni po - tens. Do mi ne Fi li
 u - ni - ge - ni te Je - - - su Chri - ste. Qui tollis pec -
 cata pec - ca ta mun di mi fe - re re mi fe - re re no -
 bis. Qui tollis pec - ca ta mun di sus ci pe de pre ca ti o - nem no -
 stram. Qui se des ad dex tram ad dex tram Pa tris mi fe - re re mi fe - re re
 no - bis. Cum San cto San cto Spi ri tu in glo ri a Dei Pa tris
 a men a - - - men a - men a - men.

P A trem om ni po tentem fa cto rem cœ li cœ li & ter ræ vi fi - bi li um
 om ni um & in - vi fi bi - li um, Et ex Pa tre na tum ante om ni a

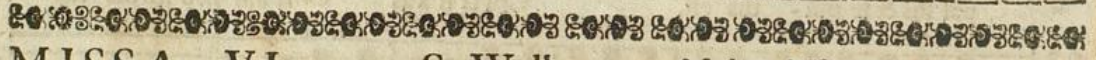




Adagio S.

Agnus Dei qui tollis pecca ta mun di mi fe re re no - -
 bis. Agnus Dei qui tollis pecca ta mun di mi fe re re nobis.
 Agnus Dei qui tollis pecca ta mun - di do na nobis pacem.

Dona nobis ut Kyrie Allabreve.



MISSA VI. S. Walburgæ Abbatiffæ.

Allabreve.

KY - ri - e e - lei fon e - lei -
 - - - fon Ky ri - e e - lei - fon e - lei - - - fon e - lei -
 Da Capo.
 fon e - lei - fon.

Allabreve.

ET in ter ra pax ho - mi ni bus bonæ volun - ta tis lau - da mus
 te bene - di ci mus te a do - ramus te glo - ri fi - ca - mus te gra ti as
 a gi mus ti - bi propter magnam glori am tu - am. Do mi ne Fi li u - ni -
 ge ni te Je su Je su Chri - ste, Qui tol - lis pec - ca ta