

Badische Landesbibliothek Karlsruhe

Digitale Sammlung der Badischen Landesbibliothek Karlsruhe

**VI. MISSAE à 4. Vocibus ordinariis, CANTO, ALTO,
TENORE, BASSO, 2. Violinis necessariis, 2. Litujs, vel
Clarinis, cum Tympanis, ex diversis Clavibus ad Libitum,
decorè tamen concurrentibus, Cum ...**

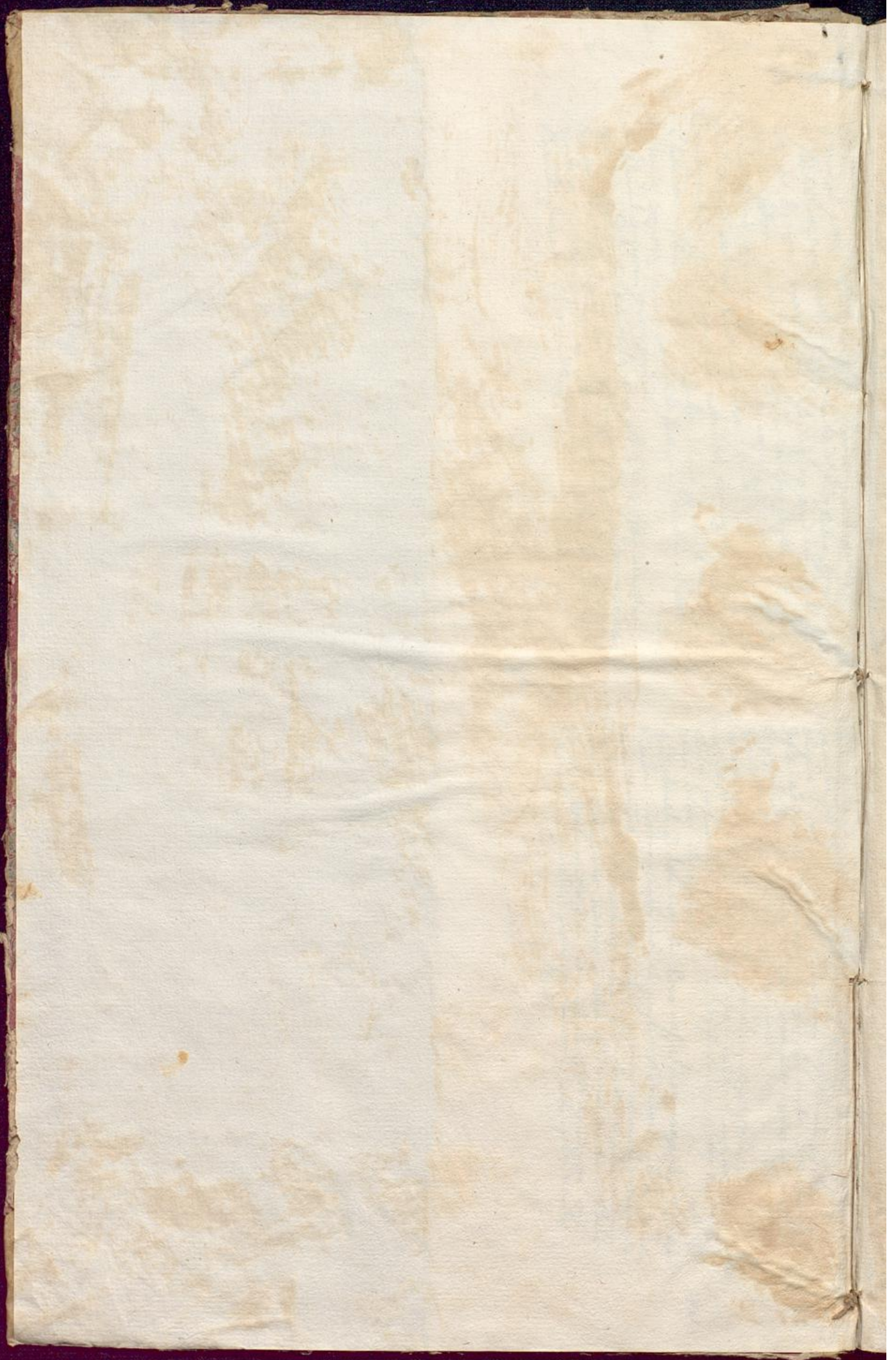
Kayser, Isfrid

Augustae Vindelicorum, 1743

Klarine I

urn:nbn:de:bsz:31-38513

CLARINO I.



MISSAE SEX

PRIMA MISSA

SECUNDA MISSA

TERCIA MISSA

QUARTA MISSA

QUINTA MISSA

SEXTA MISSA

SEPTIMA MISSA

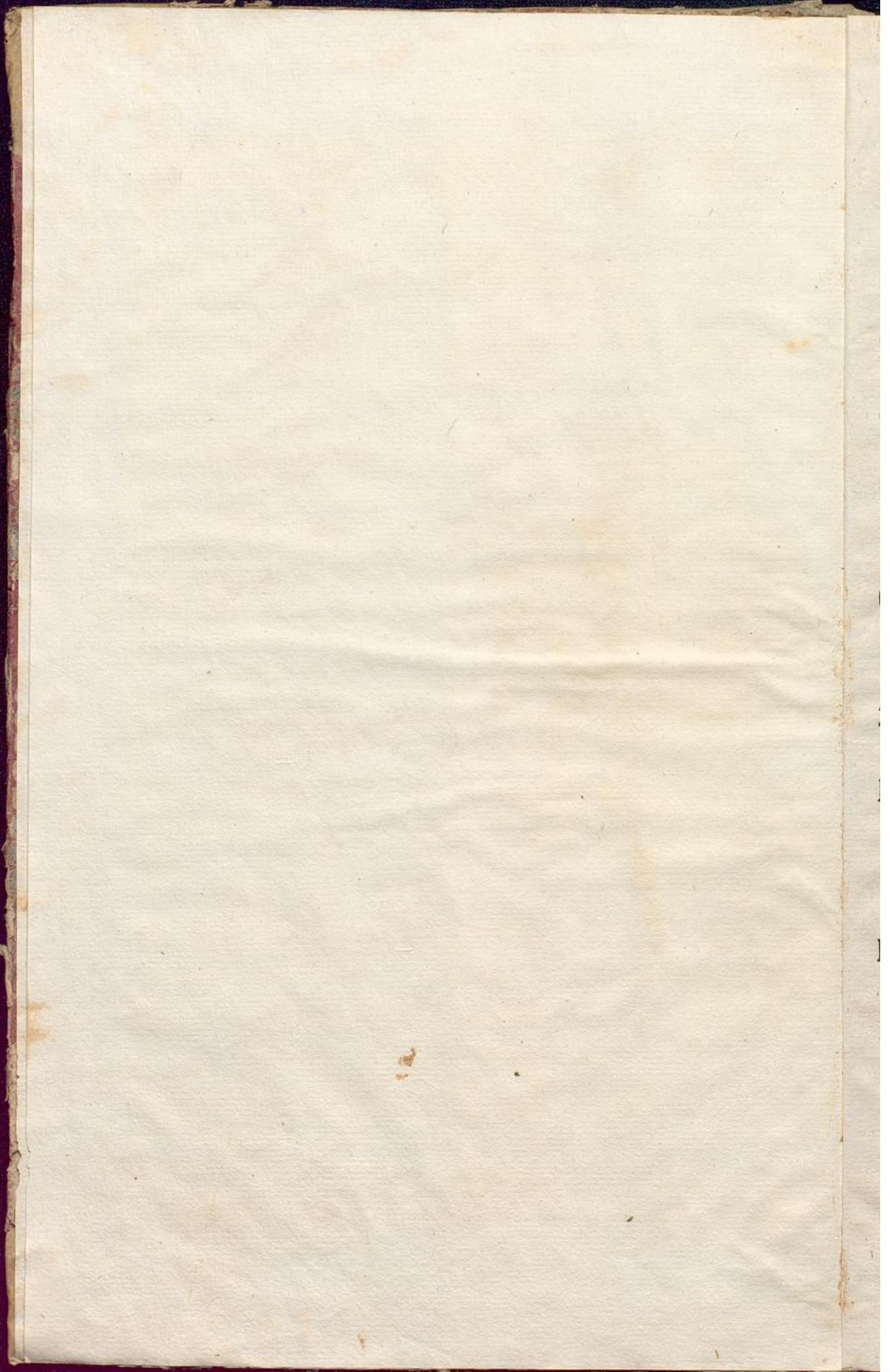
OKTAVA MISSA

NONA MISSA

DIEBUS MISSA

NOCTURNA MISSA





MISSÆ SEX,

QUARUM
PRIMA, SECUNDA, ET TERTIA
SOLEMNIORES, AC LONGIORES,
QUARTA
PASTORITIA,
QUINTA, ET SEXTA
COMMUNES, ET BREVES,

à
4. VOCIBUS ORDINARIIS
CANTO, ALTO, TENORE,
BASSO,

2. VIOLINIS, ET ORGANO NECESSA-
RIIS, 2. CLARINIS, VEL LITUIS

Decori plurimùm tribuentibus, ad libitum tamen cum VIO-
LONCELLO adhibendis,

Methodò facili, & modernâ elaboratæ

à
R. P. ISFRIDO KAYSER,
Imperialis, & Exemptæ Canonix Marchtallensis, Ordinis Præ-
monstratensis in Suevia Professo Capitulari, & Capellæ Magistro.

OPUS II.

CLARINO I.

Cum Licentia, & Facultate Superiorum.

MONACHII & AUGUSTÆ VINDELICORUM,
Sumptibus MATHIÆ RIEGER, Bibliopol.
M DCC XLIII.

MISSAE SEX

QUARUM

PRIMA, SECUNDA, ET TERTIA
SOLLENNIORES, AC LONGIORES,

QUARTA

PASTORITIA,

QUINTA, ET SEXTA

COMMUNES, ET BREVES.

3

AVOCIBUS ORDINARIIS

CANTO ALTO, TENORE

BASSO,

VIOLINS ET ORGANO NEGESSA-

RIS, & CLARINS, VEL LUTIS

Decoris plurimum adhibentibus, ad libitum tamen cum VIOL-

CONCELLO adhibendis.

Methodo facilis, & modesta elaborata.

4

R. P. ISERLIDO KAYSER,

Imperialis, & Exemptus Canonice Marchialis, Ordinis Prae-
monstratis in Sancta Provincia Capitularis, & Capella Magistro.

OPUS II.

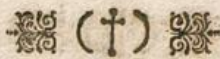
CLARINO

Cum Licentia, & facultate Speciali

Monachi & Augustae Vindelicis

Sumptibus MATTHEI RIEGER, Bibliopoli

M D C C X L I I I



MISSA I. CLARINO I. Ex C.

Adagio.
K *Yrie.*

Allegro. 26
Kyrie.

piano

Christe tacet. || Kyrie da capo. ||



Presto. 14

E *T in terra.*

Gravè.

Qui tollis.

piano

Adagio.

Cum Sancto.

C *Redo.*

Et incarnatus tacet. || $\frac{3}{4}$ *Crucifixus tacet.* || $\frac{4}{4}$

Allegro.

Et resurrexit.

alagio 2 *allegro*

Simul adoratur.



Et exspecto.



Adagio.

Anctus.



allegro

Pleni sunt.



B. S. 66

Tutti. Adagio.

Benedictus.

Osanna.

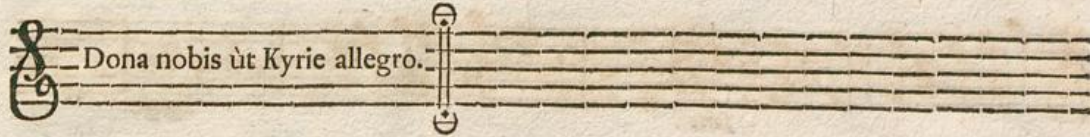


Gravè.

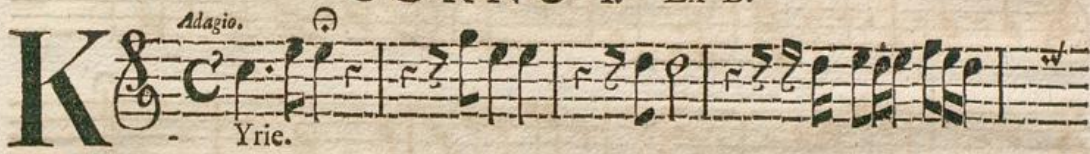


gnus Dei.





MISSA II.
CORNU I. Ex B.



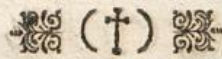
Kyrie.
Dona nobis.



R. P. Isfridi Kayser *Missa VI.*

(B)

Cornu I.



Allegro.
E T in terra. *piano*

forte

forte

forte

forte

Gravè.
 Domine.

2 6 8 3

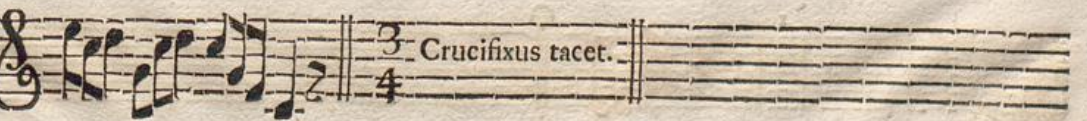
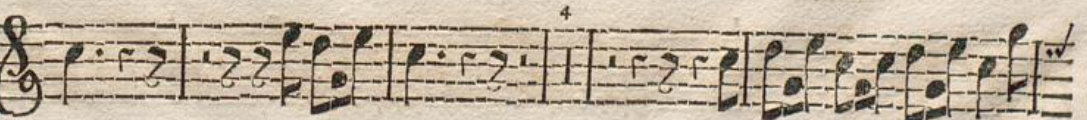
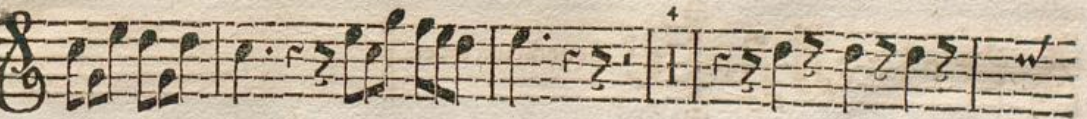
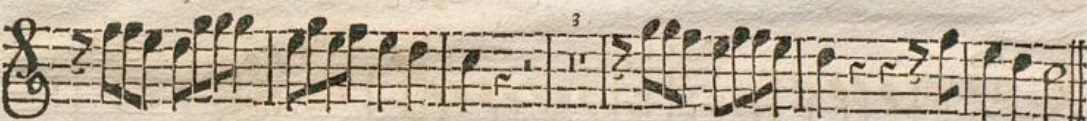
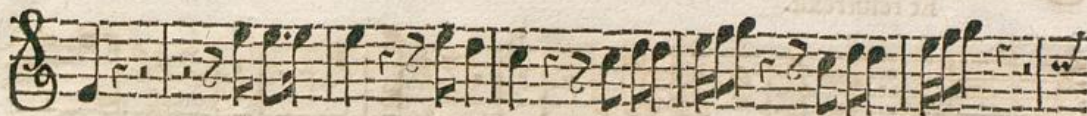
8

5 4 Da Capo.

Qui tollis tacet. Quoniam tacet.

Adagio. *Allegro.*
 Cum Sancto Spiritu. In gloria.

1



Et resurrexit.

Gravè.
Anctus.

allegro 5

Benedictus tacet.

Allegro.
8
Ofanna.

✠ (†) ✠

9

A *Gnus Dei.*

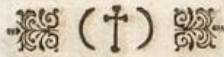
Dona nobis ut Kyrie allabreve.

MISSA III.
CORNU I. Ex D.

K *Gravè. T.*
Kyrie.

piano *forte*

Allegro. 18
Kyrie.
Dona nobis.



Gravè.
Christe.

Allegro.

Allegro.

E T in terra.

piano forte

piano forte

piano forte

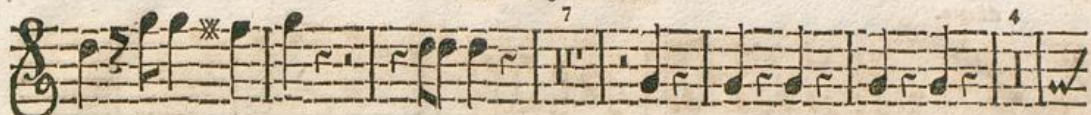
Domine tacet.

Gravè.
Qui tollis.

Gravè.

Vivacè.
Quoniam.

piano



Allegro.
10



Cum Sancto.



Atrem.



piano

forte



Et Incarnatus, & Crucifixus tacent.

Allegro.

Et resurrexit.

Musical score for 'Et resurrexit' in G major, 2/4 time. The score consists of eight staves of music. It begins with a treble clef and a common time signature. The music is characterized by rapid sixteenth-note passages and includes several first endings marked with '1' and a repeat sign. A double bar line with repeat dots appears after the fourth staff, with the number '20' written above it. The piece concludes with a final cadence.

Adagio.

Sanctus.

Musical score for 'Sanctus' in G major, 2/4 time. The score consists of three staves of music. It begins with a treble clef and a common time signature. The tempo is marked 'Adagio'. The music features a slower, more melodic line with some sixteenth-note accompaniment. It includes a first ending marked with '1' and a second ending marked with '2'. The piece ends with a final cadence.

Vivace.

Musical score for the 'Vivace' section in G major, 2/4 time. The score consists of two staves of music. It begins with a treble clef and a common time signature. The tempo is marked 'Vivace'. The music is more rhythmic and includes a first ending marked with '1' and a second ending marked with '2'. The piece ends with a final cadence.

Benedictus tacet. || Ofanna ut Cum Sancto Spiritu.

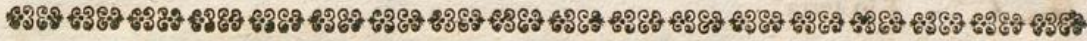
Musical score for 'Benedictus tacet' and 'Ofanna ut Cum Sancto Spiritu' in G major, 2/4 time. The score consists of one staff of music. It begins with a treble clef and a common time signature. The tempo is marked 'Adagio'. The music is mostly rests, indicating a silent section. It includes a first ending marked with '1' and a second ending marked with '2'. The piece ends with a final cadence.

Adagio.

Agnus Dei.

Musical score for 'Agnus Dei' in G major, 2/4 time. The score consists of one staff of music. It begins with a treble clef and a common time signature. The tempo is marked 'Adagio'. The music is slow and melodic, featuring a first ending marked with '1' and a second ending marked with '2'. The piece ends with a final cadence.

Dona nobis ut Kyrie allegro.



MISSA IV.

Pastoritia.

CORNU I. Ex A.

Adagio.

K Kyrie.

Largo. 15

Kyrie.
Dona.

piano *forte*

piano *Gravè.* forte

E - T in terra.

1 2

1 w

2 1 **C** Domine tacet.

Adagio. 3 4 1 1 8

Qui tollis.

2

C Quoniam tacet. *Adagio.* *Allegro.* 12

Cum Sancto. In gloria.

5 w

P *r.*
Atrem.

Adagioff.
Et incarnatus. *forte*

piano *forte*

Crucifixus tacet.

Et resurrexit.

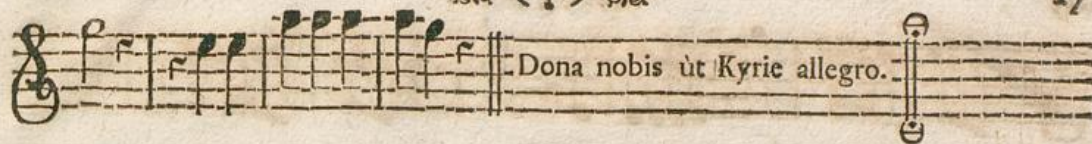
Adagio.
S *Anctus.*

allegro

Arioso.
Benedictus.

Allegro.
 12
Osanna.

Adagio.
A *Gnus Dei.*



MISSA V.
CLARINO I. Ex C.



1

P *Atrem.*

2

Et resurrexit.

3

S *Anctus.*

4

2 3 1 1 1

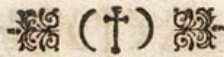
Adagio.
Benedictus.

Vivacè. 1
Ofanna.

2 1

Adagio.
A Gnus Dei.

Dona nobis ut Kyrie andante.



MISSA VI.
CORNU I. Ex F.

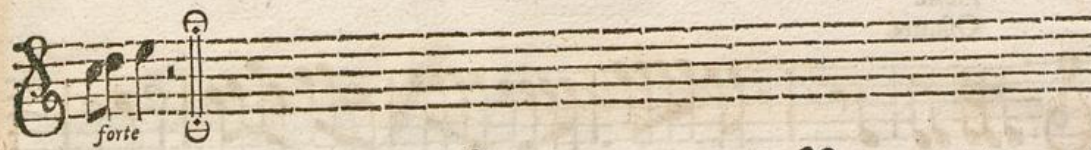
Adagio.
K *Kyrie.*

Allab.
 20

Kyrie.
Dona nobis.

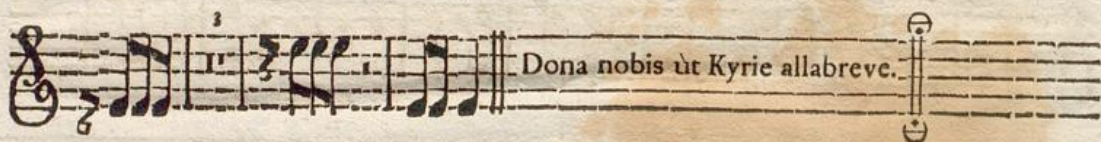
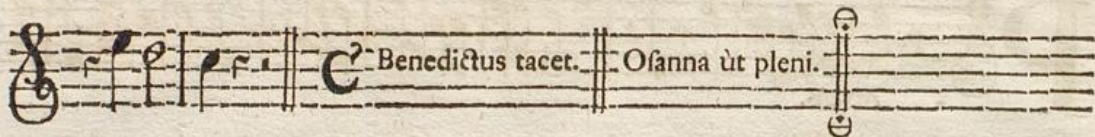
Adagio.

E *T in terra.*





Pleni.
Ofanna.



O. A. M. D. G.



