

Badische Landesbibliothek Karlsruhe

Digitale Sammlung der Badischen Landesbibliothek Karlsruhe

**De semine bono, ex terra bona fructus laboris, et artis
flos vernans in foecundis Helvetiorum convallibus exortus
harmonico XL. ariarum concentu**

Meyer von Schauensee, Franz Joseph Leonti

St. Gallen, 1748

I.

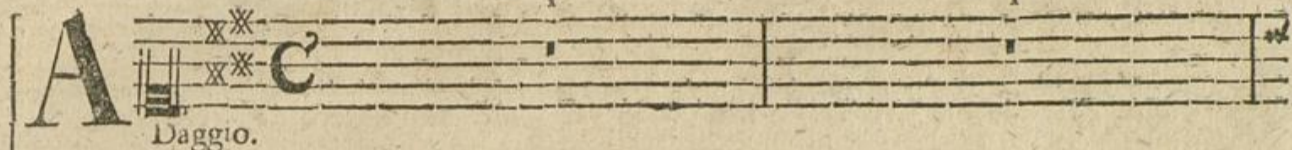
[urn:nbn:de:bsz:31-36239](https://nbn-resolving.org/urn:nbn:de:bsz:31-36239)



VIOLINO PRIMO

I.

Recitativo Stromentato.

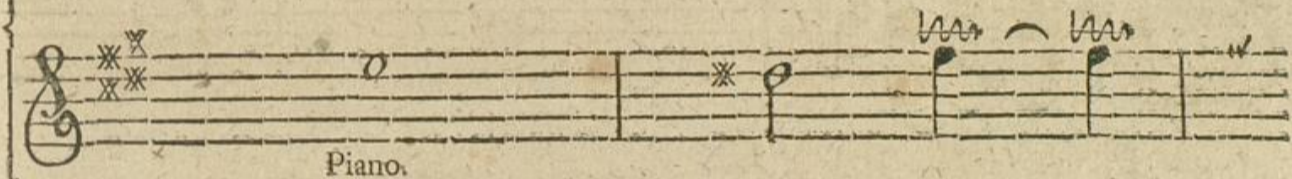
A 

Daggio.





Ti mi da mens quid hæres ah quid flu - ctu as mee rens a ni ma lin qui to



Piano.



tandem somnia va na ad DE um ad spon sum cor de to to & de-



Forrè.



vo - to an xi - a te con ver te no - li tar -

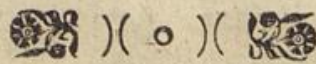


Piano. Forte.

Volti subito.

Sigre. Meyer, *Aria XL. Opus I.* A †

Violino I.



da re amorem re da - ma re DEO tu o adhære bona ve ra hîc

Piano.

quæ re in mæ - ro re in do - lo - re hîc fo - lamen hîc le-

Piano.

va - men a more mori dulce est vivere & fo li DEO ser - vi re

Piano.

dul ce reg na re

Forte.

SEGUE L'ARIA.

Allegro.
Ponfe mi.

Allegro.

Allegro.



Piano.



Forte.



Piano.

Forte.

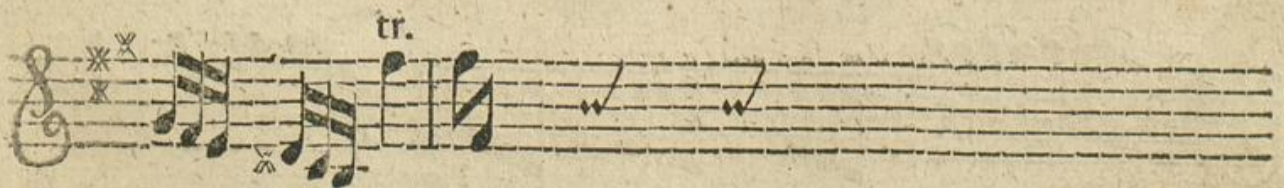


Pia.

Pia.



Forte.



tr.

Volti subito.



Piano.



Piano.

(♯) (○) (♯)

5

Forte. Piano.

tr.

Adagio. Alle.

Forte. For.

3 pia. 3 for.

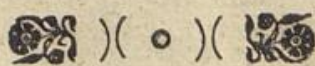
tr. Adagio. 1

3/4

4

Sigre. Meyer, Aria XL. Opus I. B †

Violino I.



Musical staff with treble clef, key signature of one flat, and common time. The first measure is marked *Forte.* and the second *Piano.* The staff contains a series of eighth and sixteenth notes, some with asterisks above them.

Musical staff with treble clef, key signature of one flat, and common time. It begins with the tempo marking *Allegro.* and ends with the marking *for.* There are some notes with asterisks above them.

Musical staff with treble clef, key signature of one flat, and common time. It contains the instruction *Da Capo.* followed by a double bar line and a few notes.



II.

Recitativo Stromentato.

Musical staff with treble clef, key signature of one flat, and common time. It begins with a large **A** and the instruction *Daggio.* There are some notes with a *i* above them.

Musical staff with treble clef, key signature of one flat, and common time. It features a series of notes with wavy lines above them, indicating trills. The dynamics *Pimo.*, *For.*, and *Piano.* are marked below the staff.

Musical staff with treble clef, key signature of one flat, and common time. It contains a few notes with a *i* above them and ends with the marking *Plan-*.

Musical staff with treble clef, key signature of one flat, and common time. It features a series of notes with wavy lines above them. The dynamics *Forte.*, *Piano.*, *For.*, and *Pia.* are marked below the staff.

Musical staff with treble clef, key signature of one flat, and common time. It contains a series of notes with wavy lines above them and ends with the marking *tr.*

Musical staff with treble clef, key signature of one flat, and common time. It contains a series of notes with wavy lines above them.