

Badische Landesbibliothek Karlsruhe

Digitale Sammlung der Badischen Landesbibliothek Karlsruhe

Sonate pour guitarre, flute et alto

Berger, Ludwig

Offenbach sur le Mein, 1808

Gitarre

urn:nbn:de:bsz:31-41630

Sonata.

Berger op. 8.

Gitarra

Dink 352

Moderato.

The image shows a handwritten musical score for guitar, titled "Sonata." by Berger, op. 8, No. 352. The tempo is marked "Moderato." The score is written on 12 staves. The first staff is in treble clef with a 2/4 time signature. The second staff is in bass clef. The third staff is in treble clef and contains several instances of the word "Gottito" written vertically. The fourth staff is in bass clef and also contains several instances of "Gottito" written vertically. The fifth and sixth staves are in treble clef. The seventh and eighth staves are in bass clef. The ninth and tenth staves are in treble clef. The eleventh and twelfth staves are in bass clef. The score is densely written with various musical notations, including notes, rests, and dynamic markings.



BLB

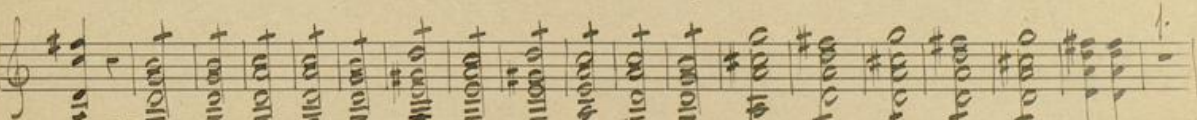
Badische Landesbibliothek
Karlsruhe

Handwritten musical score for the first section of a piece, consisting of seven staves of music. The notation includes treble clefs, a key signature of one sharp (F#), and a common time signature (C). The music features a variety of rhythmic patterns, including eighth and sixteenth notes, and rests. The first staff begins with a treble clef and a key signature of one sharp. The second staff continues the melodic line. The third staff introduces a more complex texture with multiple voices. The fourth staff features a series of sixteenth-note patterns. The fifth staff continues the melodic development. The sixth staff shows a change in texture with more frequent notes. The seventh staff concludes the section with a double bar line.

Sema con Variazioni.

Cantabile.

Handwritten musical score for the second section, consisting of four staves of music. The notation includes treble clefs, a key signature of one sharp (F#), and a common time signature (C). The music is characterized by a slower tempo and a more lyrical quality. The first staff begins with a treble clef and a key signature of one sharp. The second staff continues the melodic line. The third staff features a series of sixteenth-note patterns. The fourth staff concludes the section with a double bar line.



Schubert

Handwritten musical score on six staves. The notation includes treble clefs, a key signature of one sharp (F#), and a common time signature (C). The music features complex rhythmic patterns, including sixteenth and thirty-second notes, and rests. The first staff begins with a dynamic marking of *p*. The second staff contains a *2* marking above a note. The third staff has a *f* marking above a note. The fourth staff includes a *2* marking above a note. The fifth and sixth staves contain a series of notes with a *f* marking above them. The sixth staff ends with a double bar line and a fermata.

Seven empty musical staves, each consisting of five horizontal lines, arranged vertically on the page.

