

Badische Landesbibliothek Karlsruhe

Digitale Sammlung der Badischen Landesbibliothek Karlsruhe

Agnes Sorel

Gyrowetz, Adalbert

Wien, 1806

Klavierauszug

urn:nbn:de:bsz:31-43359

Janh 1266

AGNES SOREL

eine große Oper

in drey Akten

von

GYROWETZ.

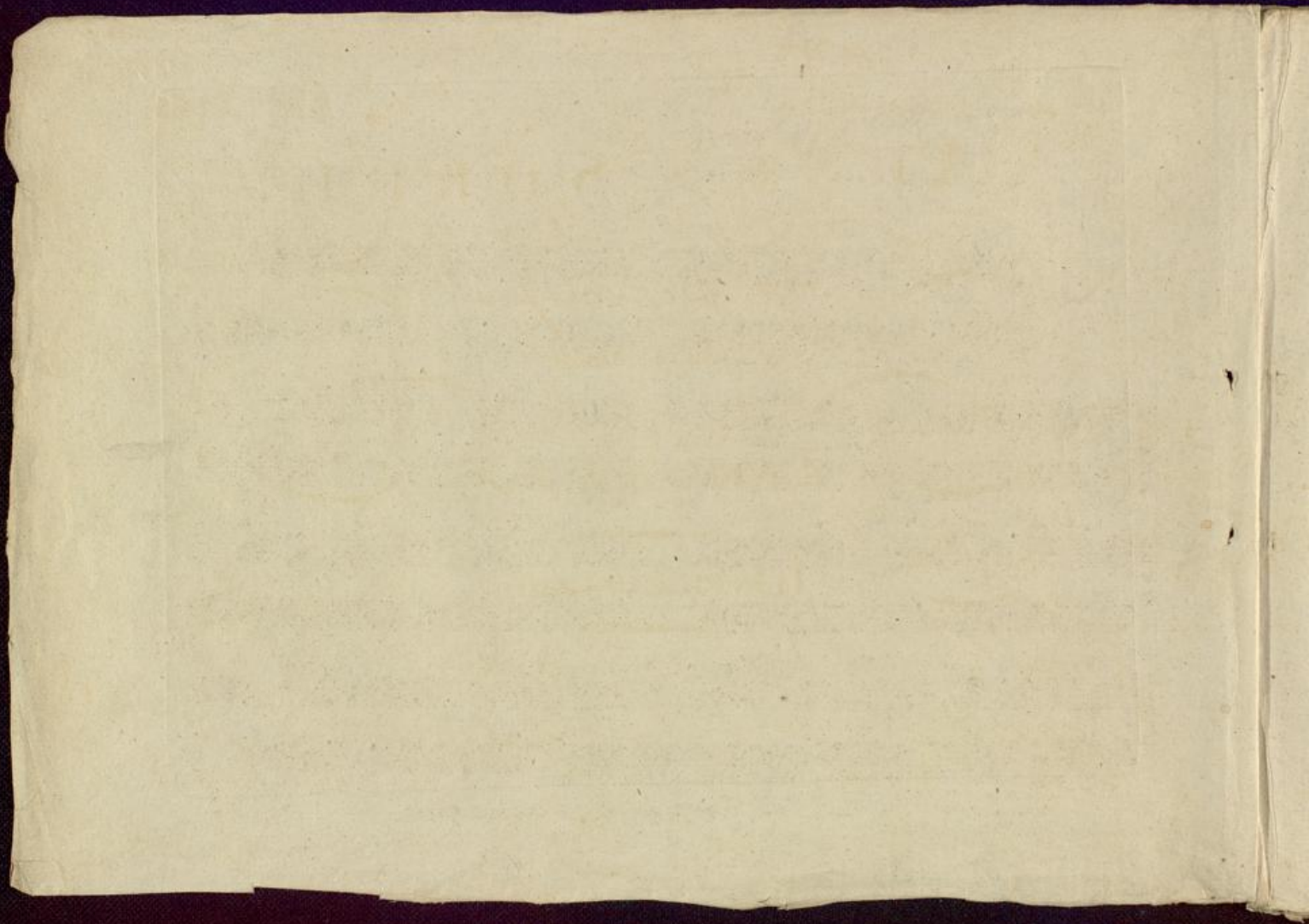
Klavierauszug.

N^o 912-930

Wien

17

Im Verlage des Kupfermeisters Thade Weigl, am Graben N^o 1112.



O U V E R T U R E

aus dem grossen Singpiel: AGNES SOREL. Von Herrn Kapellm: Gïrowetz.

Allegro.

OUVERTURE.

Op. 210.

Wien, bey THADE WEIGL am Graben N^o 4212.

Handwritten musical score on aged paper, featuring six systems of staves. Each system consists of a treble clef staff and a bass clef staff. The notation includes various musical symbols such as notes, rests, and dynamic markings like *p* and *pp*. The page number 910 is visible at the bottom center of the manuscript.

Handwritten musical score on aged paper, featuring multiple systems of staves. The notation includes treble and bass clefs, various note values, rests, and dynamic markings such as *f* and *fz*. The page number 910 is visible at the bottom center of the manuscript.

Marcia.
Andante.
Allegro.
p.
f.
p.
sf.
f.
p.
p.
cres.
f.

910.

Detailed description: This is a page of handwritten musical notation for a march. It consists of six systems of staves. The first system is marked 'Marcia.' and 'Andante.', with dynamics 'p.' and 'f.'. The second system continues the 'Andante.' tempo with dynamics 'p.' and 'sf.'. The third system is marked 'Allegro.' and contains dynamics 'f.' and 'p.'. The fourth system is marked 'Allegro.' and contains dynamics 'p.', 'cres.', and 'f.'. The fifth and sixth systems continue the 'Allegro.' tempo with various rhythmic patterns and dynamics. The page number '910.' is printed at the bottom center.

Handwritten musical score on aged paper, featuring six systems of music. Each system consists of a treble clef staff and a bass clef staff. The notation includes various note values, rests, and dynamic markings such as *p* (piano). The page number "910." is visible at the bottom center of the manuscript.

A page of handwritten musical notation on aged, yellowed paper. The page contains six systems of musical staves, each with a treble and bass clef. The notation is dense, featuring various note values, rests, and dynamic markings such as *f* and *ff*. The paper shows signs of wear, including a tear on the left edge and some foxing. The number '210' is written at the bottom center of the page.

