

Badische Landesbibliothek Karlsruhe

Digitale Sammlung der Badischen Landesbibliothek Karlsruhe

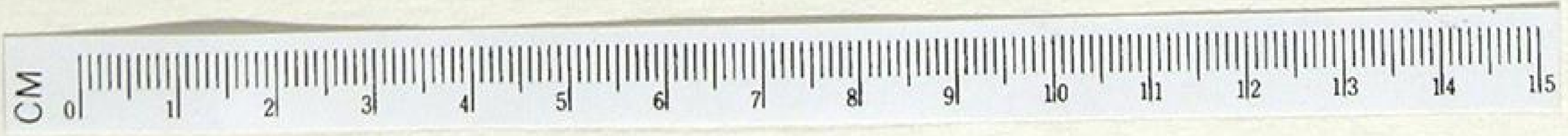
Donati, Fragment - Cod. Aug. Fr. 113

[S.l.], [14. Jh.]

[urn:nbn:de:bsz:31-1177](https://nbn-resolving.org/urn:nbn:de:bsz:31-1177)

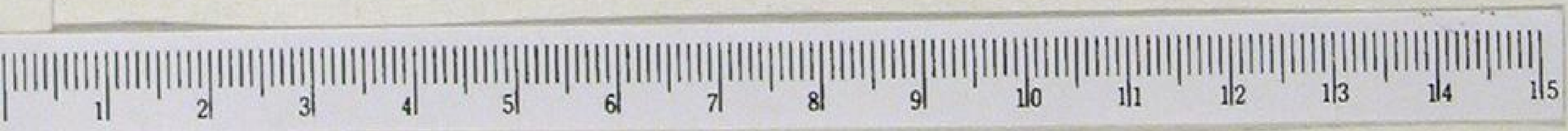
Fragment of a parchment manuscript with several lines of text in a medieval script. A large, ornate initial letter is visible on the left side, decorated with red ink. The parchment is aged and shows some staining.

Fragment of a parchment manuscript with several lines of text in a medieval script. The text is densely packed and appears to be a continuation of a larger work. The parchment is aged and shows some staining.



... autem ut videtur bene ut videtur
Deinde autem et de his sit ut dicit
affinis ut infra placuit autem ut hec illi
Distinctionem quod est pars prima ut
dicitur et ubi sequitur enim ante gen
dicitur autem quod et significatio ab u
tunc et figura **D**istinctionem quod est autem
tunc et figura **D**istinctionem quod est autem
tunc et figura **D**istinctionem quod est autem
tunc et figura **D**istinctionem quod est autem

... ut hec illi
ut et hec et hoc legens **D**istinctionem quod est
ut et hec et hoc legens **D**istinctionem quod est
ut et hec et hoc legens **D**istinctionem quod est
ut et hec et hoc legens **D**istinctionem quod est
ut et hec et hoc legens **D**istinctionem quod est
ut et hec et hoc legens **D**istinctionem quod est
ut et hec et hoc legens **D**istinctionem quod est



Handwritten text in a medieval script, likely Gothic or Carolingian minuscule, on a fragment of parchment. The text is arranged in approximately 10 lines. The parchment is aged and shows signs of wear, including a small hole on the left side. The ink is dark brown or black. The text is partially obscured by the hole and the edges of the fragment.

Handwritten text in a medieval script, likely Gothic or Carolingian minuscule, on a fragment of parchment. The text is arranged in approximately 10 lines. The parchment is aged and shows signs of wear, including a small hole on the left side. The ink is dark brown or black. The text is partially obscured by the hole and the edges of the fragment.

