

Badische Landesbibliothek Karlsruhe

Digitale Sammlung der Badischen Landesbibliothek Karlsruhe

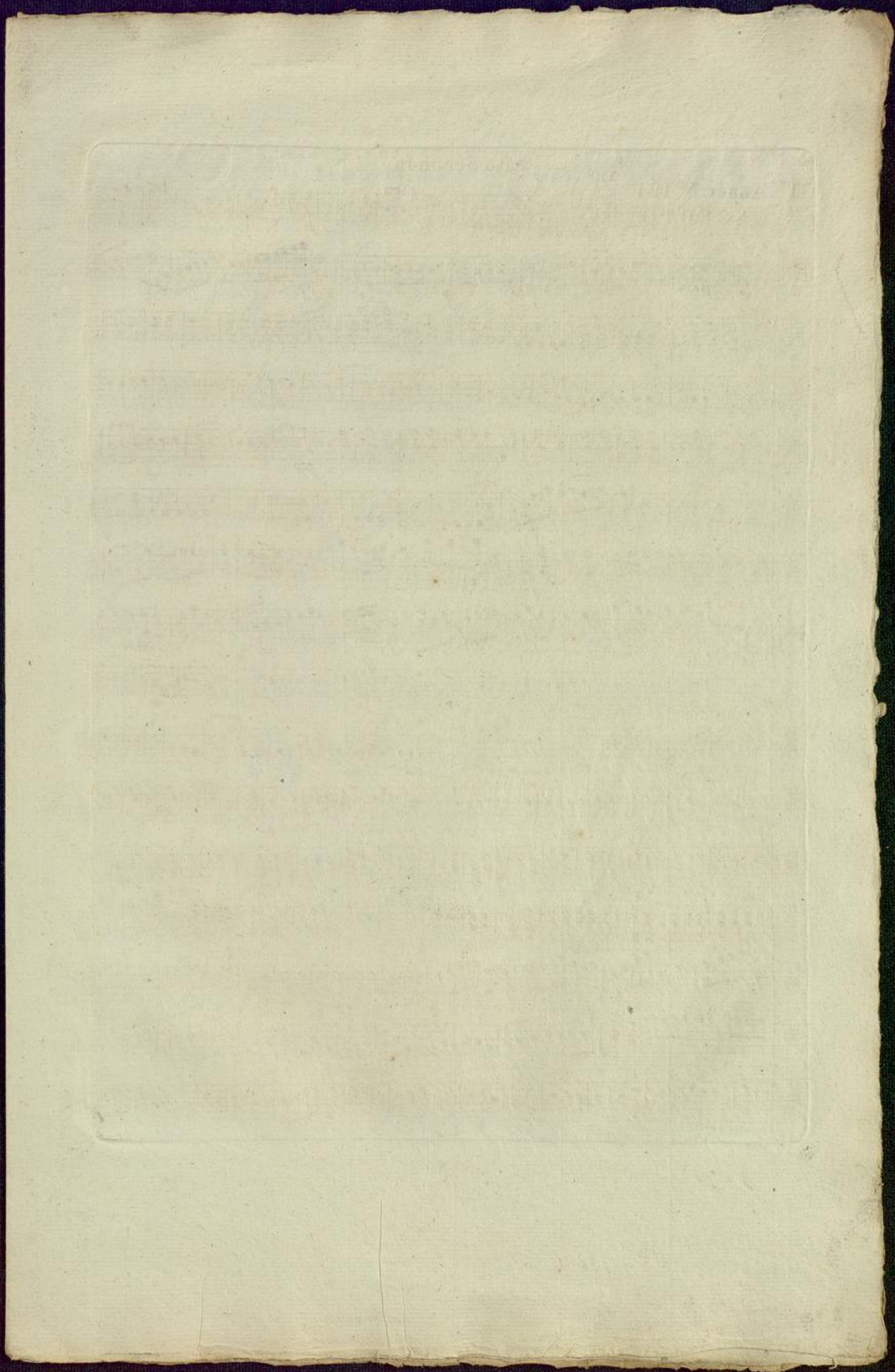
Concerto pour le piano forte

Pleyel, Ignaz

Paris, 1790

Viola II

urn:nbn:de:bsz:31-45014



II^{mo}. Année. N^o. 121.
CONCERTO

All^o Vivace Alto Secondo

Handwritten musical score for Alto Secondo, page 2. The score consists of 15 staves of music. It begins with a treble clef and a common time signature. The tempo is marked "All^o Vivace". The score includes various dynamic markings such as "f", "p", "pp", and "ff". There are also performance instructions like "1 solo" and "cra". The music features complex rhythmic patterns, including sixteenth and thirty-second notes, and rests. The page number "2" is in the top left corner.



Alto Secondo

The first section of the musical score consists of ten staves. The notation includes various rhythmic values such as eighth and sixteenth notes, often beamed together. Dynamic markings are used throughout, including *f* (forte), *p* (piano), *ff* (fortissimo), and *pp* (pianissimo). There are also some articulation marks like accents and slurs. The key signature has one flat, and the time signature is 2/4.

Adagio

The second section, marked *Adagio*, begins with a 3/4 time signature. It consists of ten staves of music. The tempo is slower than the first section. Dynamic markings include *f*, *p*, *pp*, *sf* (sforzando), and *poco f*. There are also some performance instructions like *acc.* (accents) and *tr.* (trills). The notation features a mix of quarter and eighth notes, with some complex rhythmic patterns. The key signature remains one flat.

Alto Secondo

Rondo
Allegro

ff

p

3

p

3 7 15

ff

p

1

1

3

Minore

p

1

4

f

p

Alto Secondo

Handwritten musical score for Alto Secondo, consisting of 12 staves. The score includes various musical notations such as notes, rests, and dynamic markings. Key markings include *f*, *p*, *ff*, and *Minore*. The piece concludes with a double bar line. The manuscript is on aged, slightly stained paper.

