

Badische Landesbibliothek Karlsruhe

Digitale Sammlung der Badischen Landesbibliothek Karlsruhe

La Clé du caveau

Capelle, Pierre Adolphe

Paris, 1816

No. 653 - 700.

urn:nbn:de:bsz:31-48184

n° 653. *And^c*

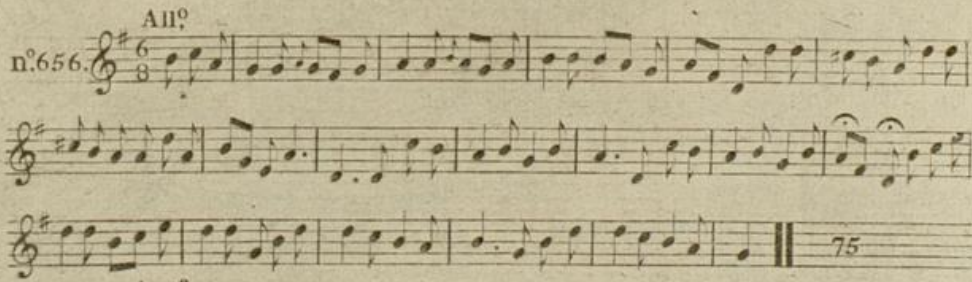
53

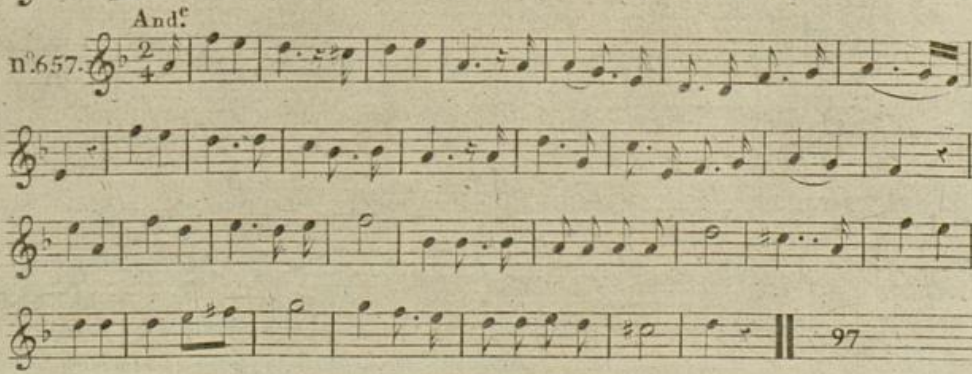
n° 654. *All^o*

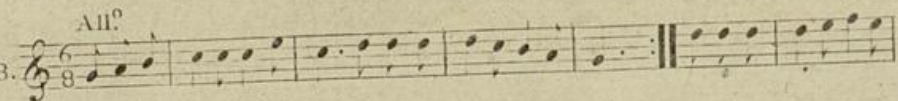
72

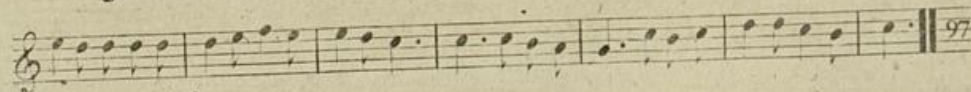
n° 655. *All^o*

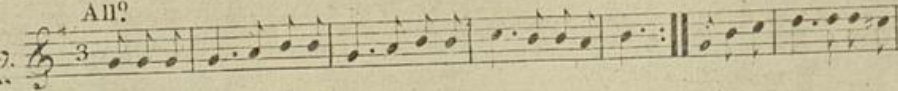
76

All^o
n.º 656. 


And.^t
n.º 657. 


n^o. 658. *All^o* 

 97

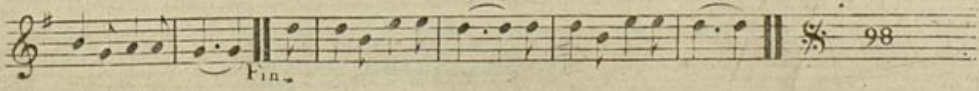
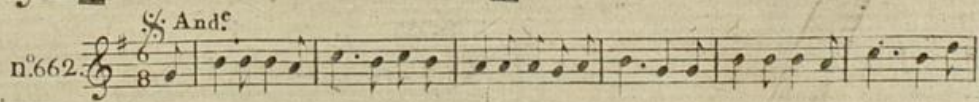
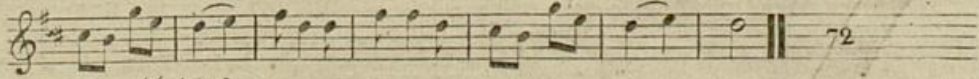
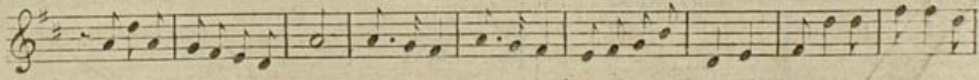
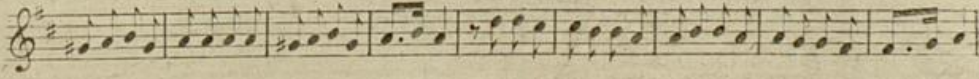
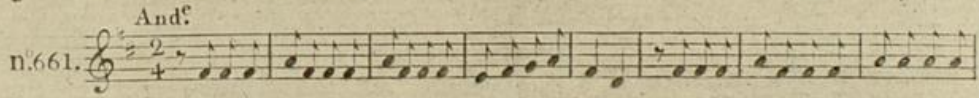
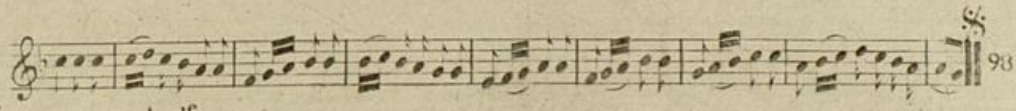
n^o. 659. *All^o* 

 97

n^o. 660. *All^o* 

 Fin.





n. 663. *All.^o*
3

n. 664. *All.^o*
6/8

n. 665. *All.^o*
6/8

n. 666. *All.^o*
3

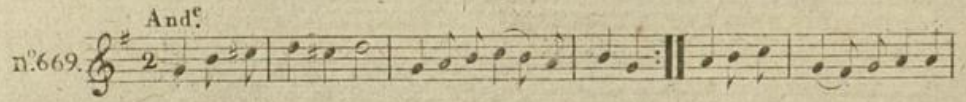
n.º 667. *All.^{to}*

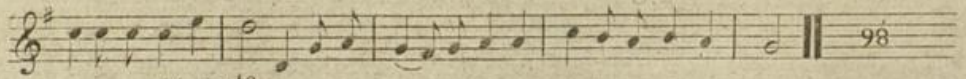
34

n.º 668. *And.^c*

Fin.

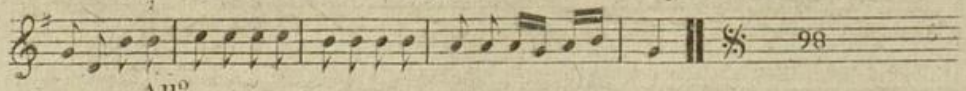
98

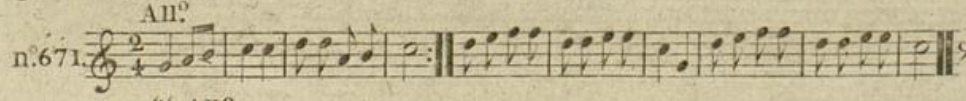
n°669. *And.^{te}* 

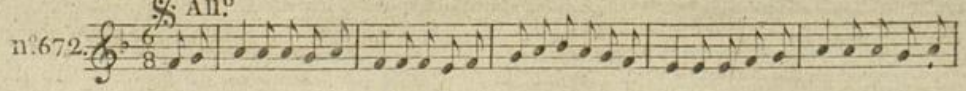
 98

n°670. *All.^{to}* 

 *Fin.*

 98

n°671. *All.^o* 

n°672. *All.^o* 

Fin.

All.º

n.º 673.

All.º

n.º 674.

99

99

99

n^o. 675. *All^o*

n^o. 676. *All^o*

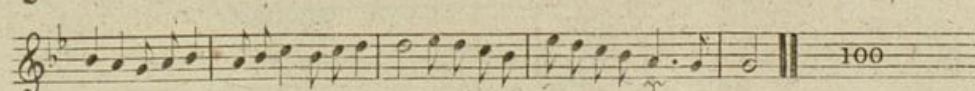
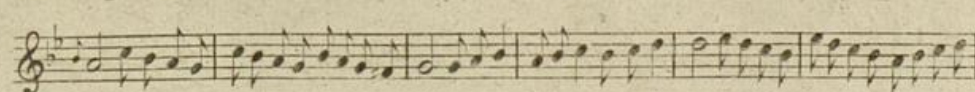
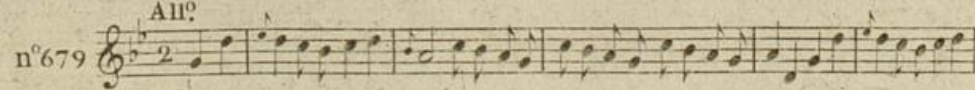
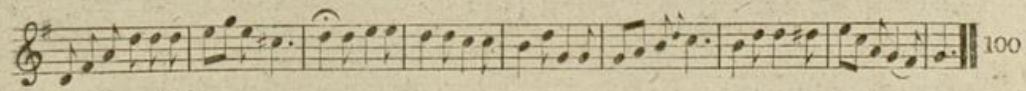
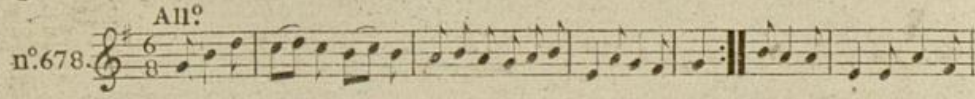
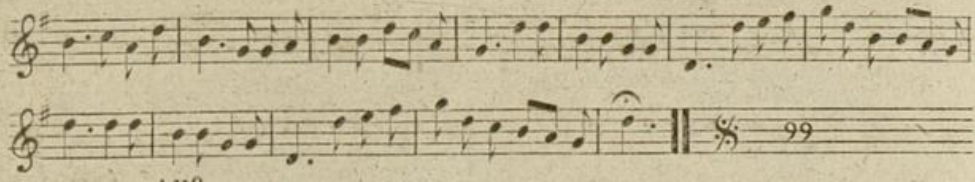
n^o. 677. *All^o*


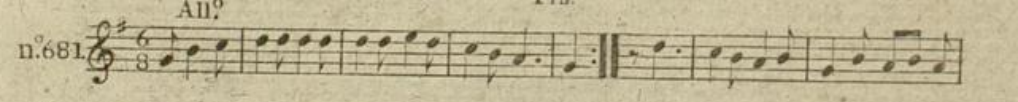
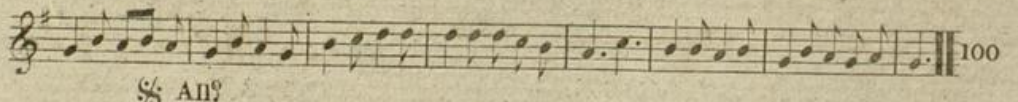
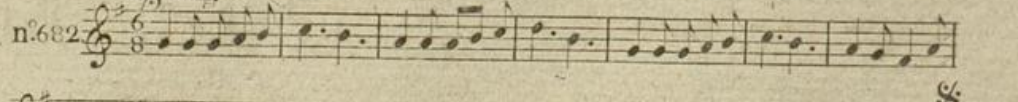
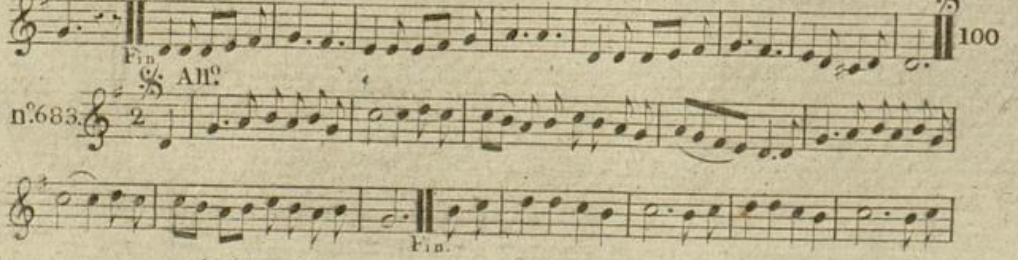
99

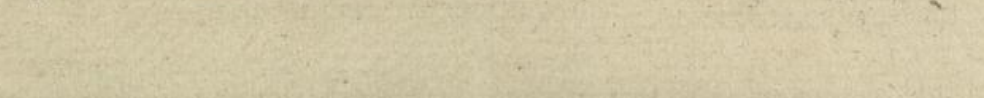
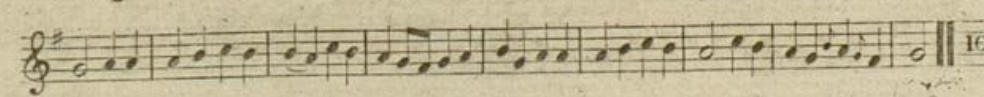
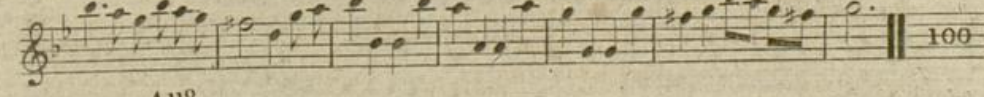
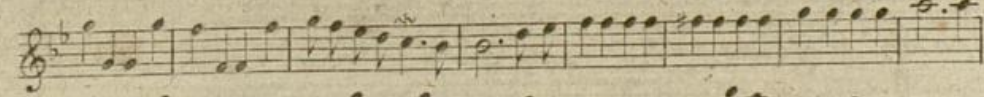
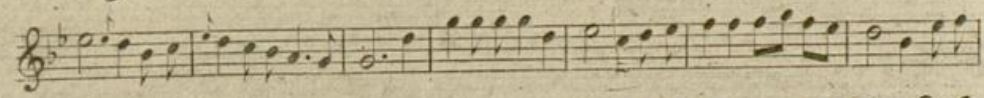
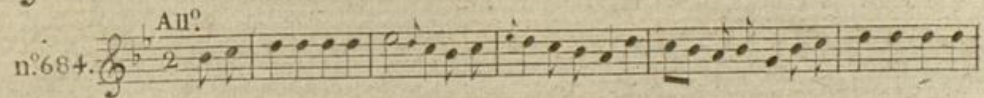
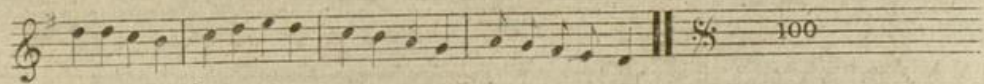
99

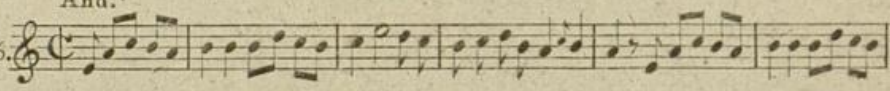
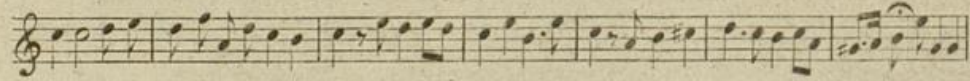
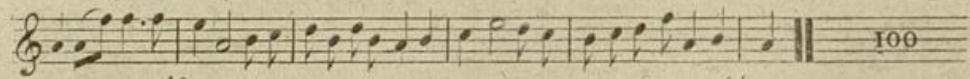
Fin.

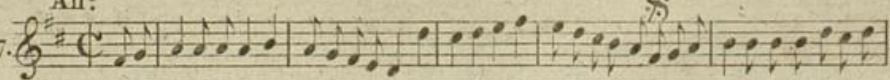
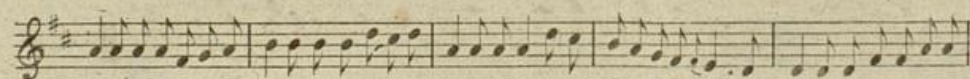
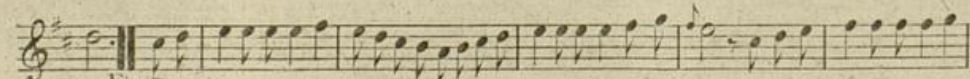
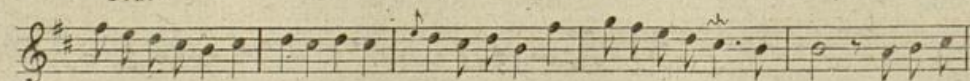
The image shows three musical pieces, each consisting of two staves. Piece n. 675 is in 2/4 time, piece n. 676 is in 6/8 time, and piece n. 677 is in 6/8 time. All pieces are marked 'All' (Allegro). The page number '288' is at the top. The number '99' appears on the right side of the second and third staves of each piece. The word 'Fin.' is written below the final staff of piece n. 677.

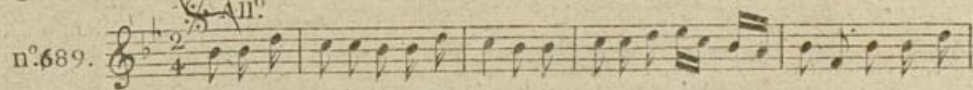
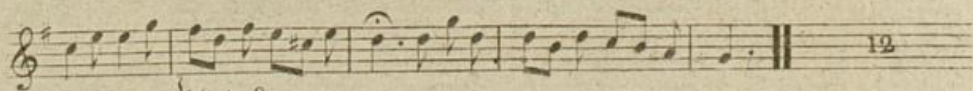
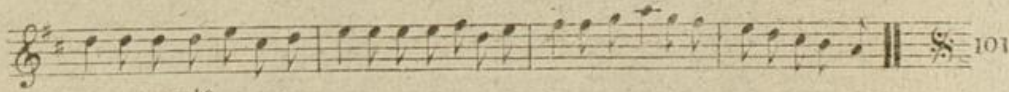


n.680 *All.^o* 
n.681 *All.^o* 
n.682 *All.^o* 
n.683 *All.^o* 


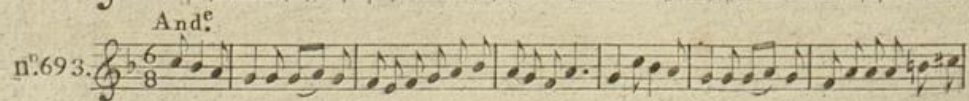
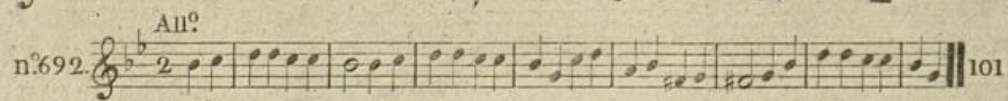
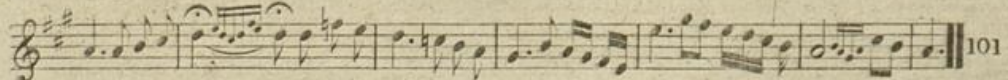
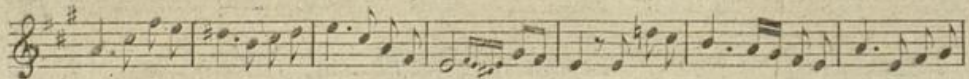
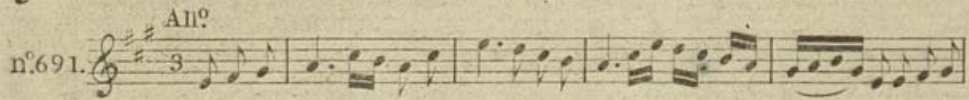
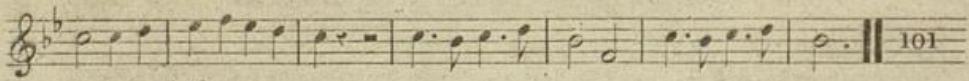
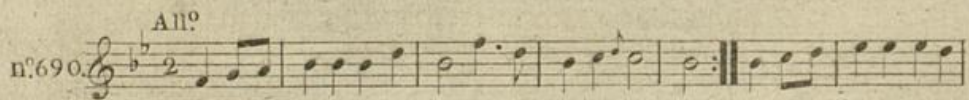


And.^{te}
n.º 686. 

 100

All.^{to}
n.º 687. 

 Fin.^a


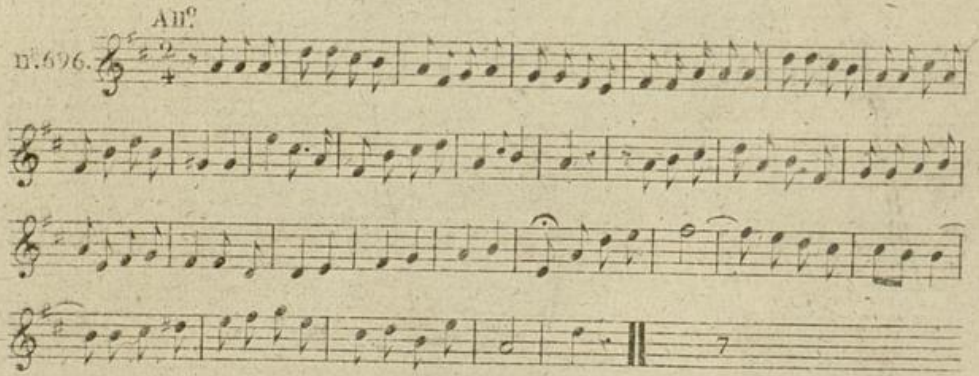


Handwritten scribbles or notes in the bottom right corner of the page.

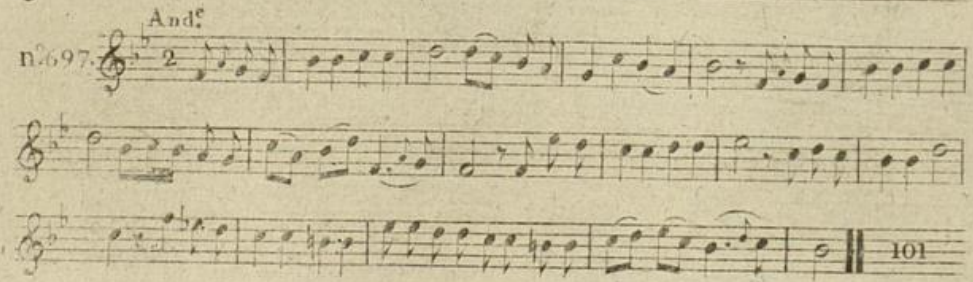


The image shows a page of handwritten musical notation on aged, yellowed paper. The page is numbered 295 in the top right corner. It contains two musical pieces, n. 694 and n. 695, each consisting of two staves of music. Piece n. 694 is in 6/8 time and marked 'And.' (Andante). It begins with a treble clef and a key signature of one flat. The notation includes various rhythmic values such as eighth and sixteenth notes, and rests. The piece concludes with a double bar line and the word 'Fin.' written below. Piece n. 695 is also in 6/8 time and marked 'All.' (Allegro). It begins with a treble clef and a key signature of one flat. The notation includes eighth and sixteenth notes. Like the first piece, it ends with a double bar line and the word 'Fin.' written below. There are some faint markings and a small '101' written at the end of the second staff of each piece, possibly indicating a page or measure number. The paper shows signs of wear, including creases and discoloration.

All.^o
n. 696.



And.^{te}
n. 697.



n^o. 698. *All^o*

Fin.

101

n^o. 699. *And^{te}*

102

n^o. 700. *And^{te}*

102

Detailed description: The page contains three musical pieces, each on a single staff. Piece n. 698 is in 2/4 time, marked 'All' (Allegro), and ends with a double bar line and the word 'Fin.'. Piece n. 699 is in 3/4 time, marked 'And' (Andante), and ends with a double bar line and the number '102'. Piece n. 700 is in 2/4 time, marked 'And' (Andante), and ends with a double bar line and the number '102'. The notation includes various note values, rests, and bar lines.