

Badische Landesbibliothek Karlsruhe

Digitale Sammlung der Badischen Landesbibliothek Karlsruhe

Cosmographia

Ptolemaeus, Claudius

Ulm, 1486

Secunda Asie tabula

[urn:nbn:de:bsz:31-51374](https://nbn-resolving.org/urn:nbn:de:bsz:31-51374)



ECVNDATA ASIE tabula continet Sarmatiam ipsius. Paralellus ipsius medius pportione habet ad meridianum quam septem ad duodecim. Terminatur autem tabula. Ab ortu scythia intra Imaum montem & parte caspij maris Ab austro albania & hiberia & colchide & parte euxini ponti Ab occasu cimmerico bosphoro & palude meotide atque sarmatia europe Ab arcto terra incognita.

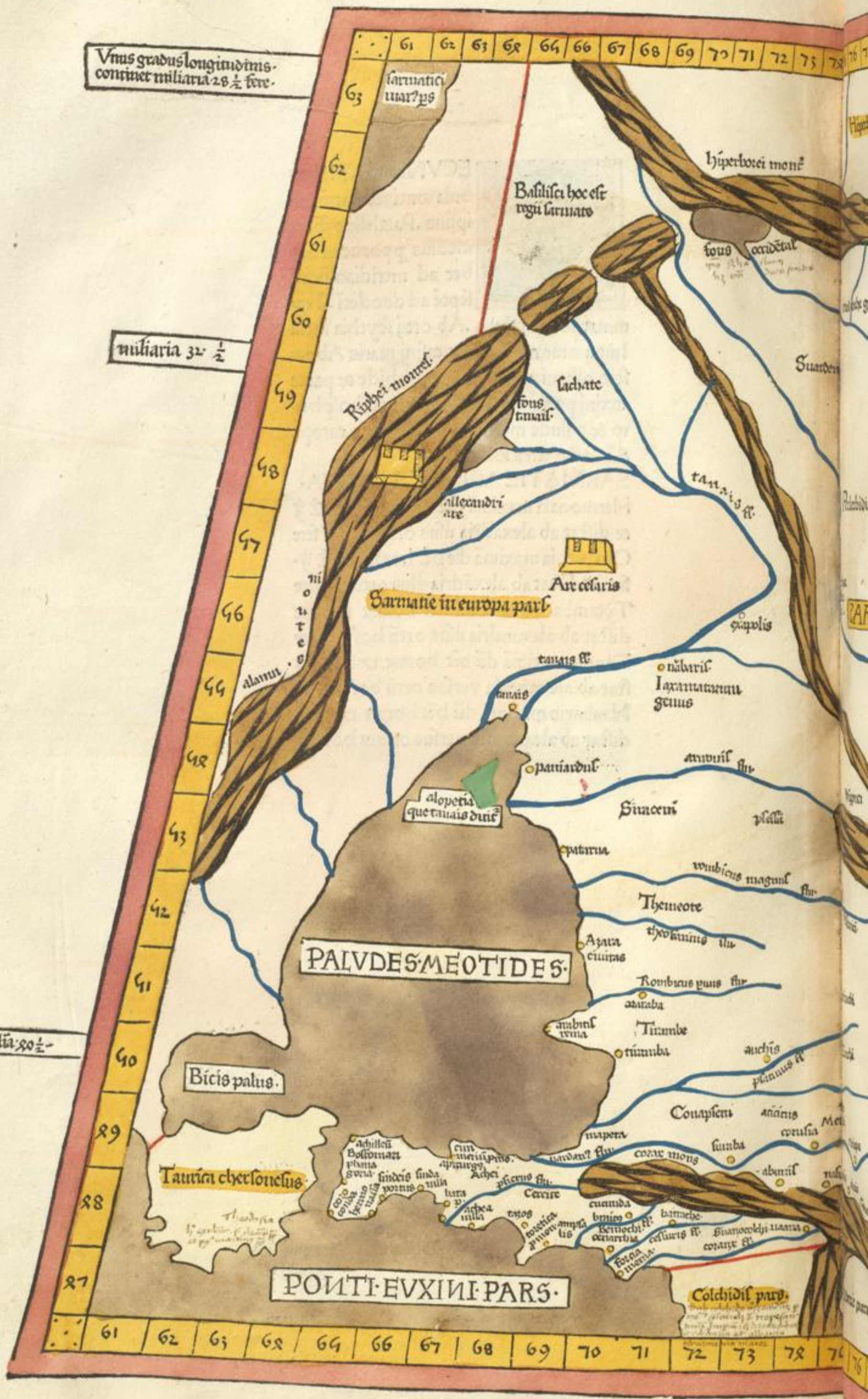
SARMATIE ASIATICE CIVITATE.

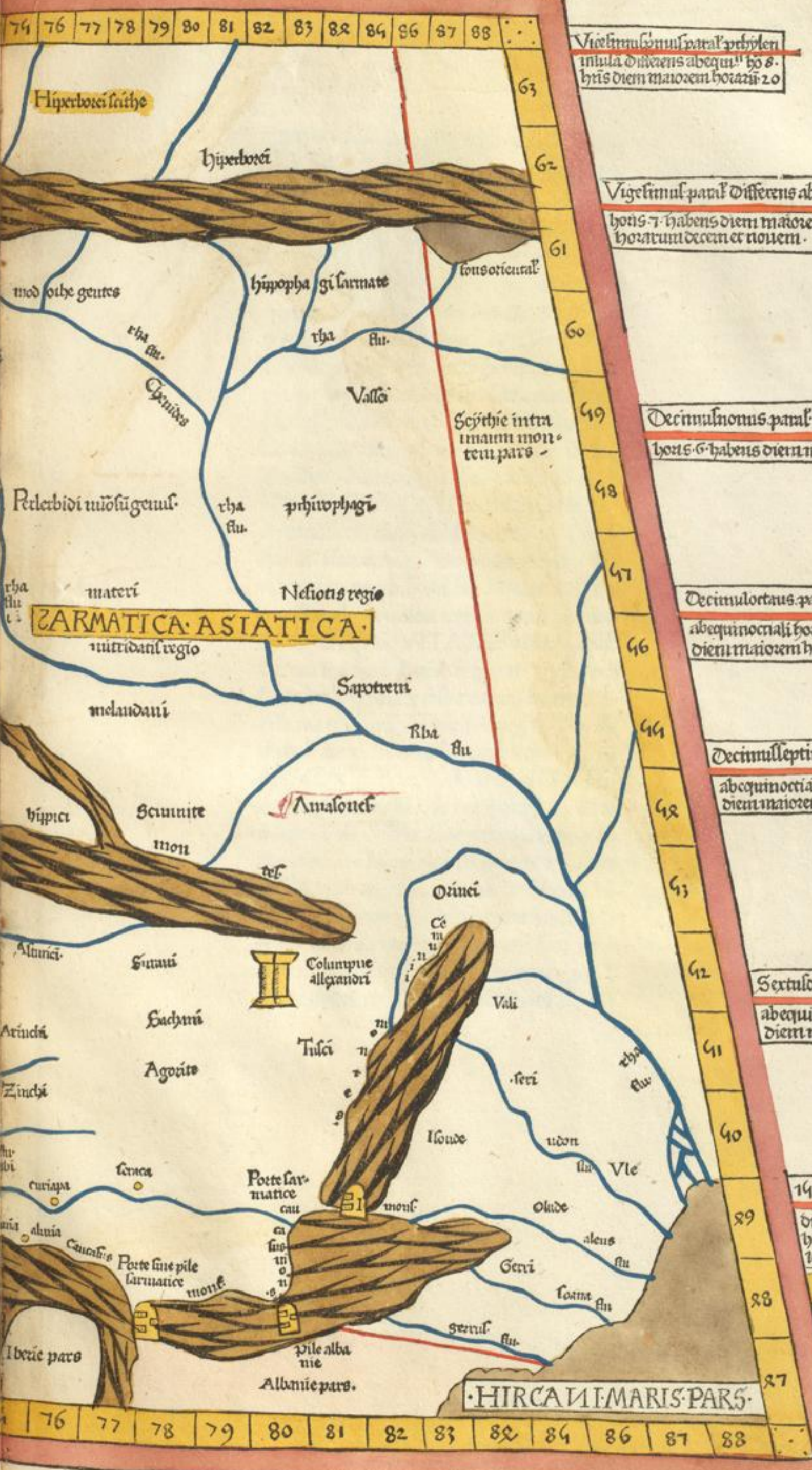
Hermonasa maximam diem habet horarum $19 \frac{2}{3}$ & distat ab alexandria versus ortum horum $1 \frac{2}{3}$ fere
Oenanthia maximam diem habet horarum $19 \frac{2}{3}$ fere et distat ab alexandria versus ortum $1 \frac{2}{3}$ fere
Tyramba maximam diem habet horarum $16 \frac{1}{2}$ & distat ab alexandria versus ortum horum $1 \frac{2}{3}$ fere
Tanais maximam diem habet horarum $17 \frac{1}{8}$ & distat ab alexandria versus ortum horum $1 \frac{2}{3}$ 10
Naubaris maximam diem habet horarum $17 \frac{1}{4}$ & distat ab alexandria versus ortum horum $1 \frac{2}{3}$

Vnus gradus longitudinis
continet miliaria 28 1/2 fere.

miliaria 32 1/2

Milia 20 1/2





Vicissimus paral' p'hylen
insula differens abequi^l hō 8.
h'is diem maiorem horariū 20

Vigesimal' paral' differens abequi^l
horis 7 habens diem maiorem
horarum decem et nouem.

Decimulnonus paral' differens abequi^l
horis 6 habens diem maiorem hō 18.

Decimulortaus paral' differens
abequinoctiali horis 4 1/2 h'is
diem maiorem horariū 17 1/2.

Decimulleptimus paral' differens
abequinoctiali horis 4 habens
diem maiorem horarum 17.

Sextuldecimus paral' differens
abequinoctiali hō 2 1/2 h'is
diem maiorem hō 16 et dimidie

14 paral' per Borilchenen
differens abequinoctiali
hō 2 habens diem ma-
iorem horariū sedecim.

Clima septimum.

• HIRCANI MARIS PARS •

