

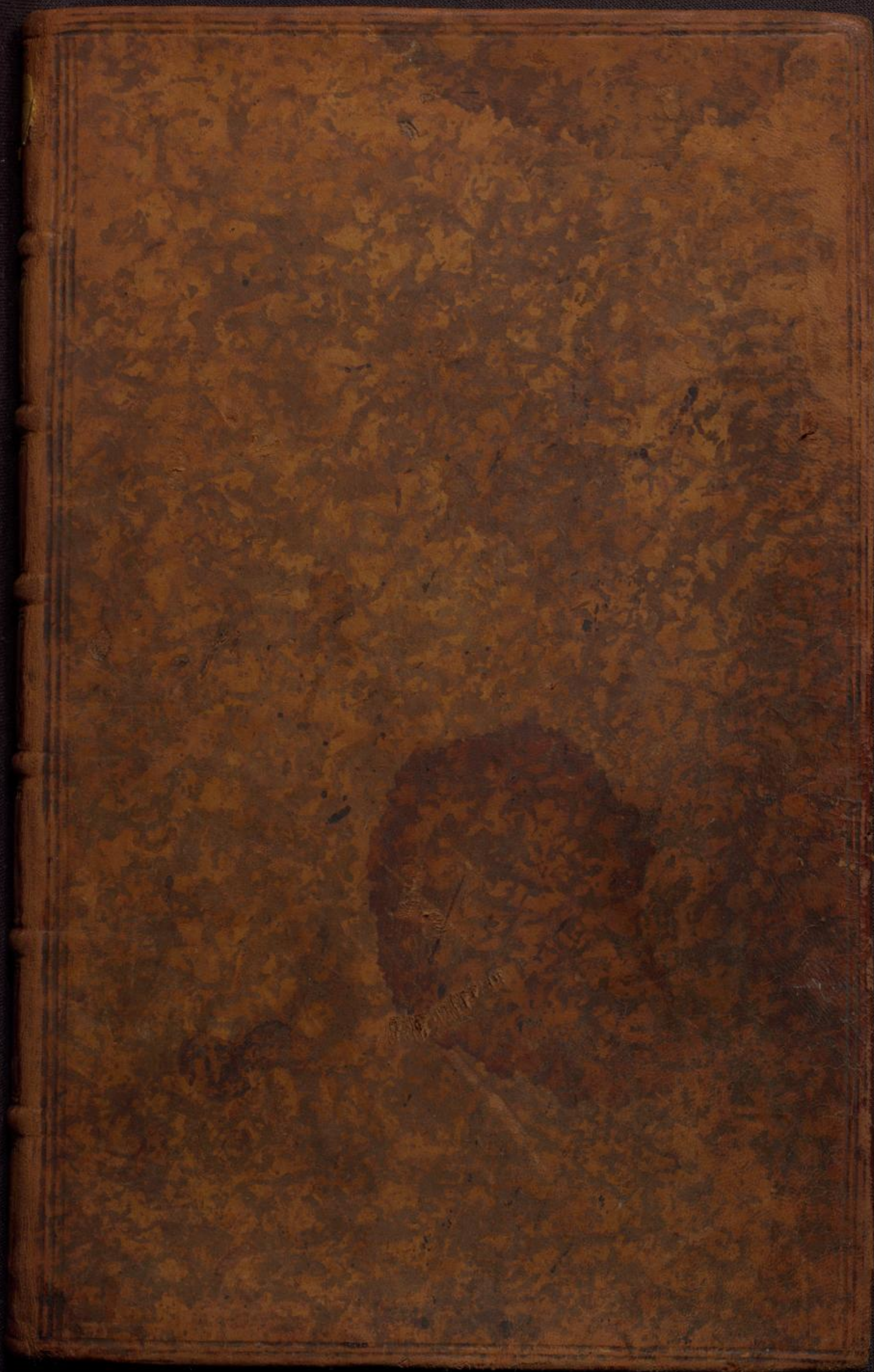
Badische Landesbibliothek Karlsruhe

Digitale Sammlung der Badischen Landesbibliothek Karlsruhe

Choralbuch für Orgel - Cod. St. Blasien 55

[St. Blasien], [18. Jahrh.]

[urn:nbn:de:bsz:31-51421](https://nbn-resolving.org/urn:nbn:de:bsz:31-51421)



2. f. Blasen 55

Missa Tempore Paschalij.

K

Handwritten musical notation for the first system, featuring a treble clef and a bass clef. The lyrics are: *ris-e e- lei-son.*

Handwritten musical notation for the second system, featuring a treble clef and a bass clef. The lyrics are: *Chri- ste e- lei-son.*

Handwritten musical notation for the third system, featuring a treble clef and a bass clef. The lyrics are: *Ky- ri-e e-*

Handwritten musical notation for the fourth system, featuring a treble clef and a bass clef. The lyrics are: *lei-son.*



G

Handwritten musical notation for the fifth system, featuring a treble clef and a bass clef. The lyrics are: *za- ti-as agi-mus hi-bi propter.*

Missa

magnam glo-riam tuam. Do-mi-ne

fi-li u-ni-ge-ni-te Je-su Chri-ste

Qui tol-lis pec-cata mundi sus-cipe depreca-tio-

-o-nem no-stram. Tu so-lus sanc-tus

Tu so-lus altis-simus Je-su Chri-ste

Tempore Paschalj -

P

atrem omnipo- tentem factorem caeli et ter- ras:

vi- sibilium omnium et invi- sibi- lium et in

adag. unum Dominum Je- = sum Christum filium dei unigeni-

- tum. et ex Patre na- = tum ante omnia saecula

Deum de deo. lumende lumine Deum verum de deo

Missa

ve=ro. ge-ni-tum non factum consubstanti-alem

Pa-tri per quem omnia facta sunt. qui propt- nos

homines et propter nostram salu-tem descen-

adag.
-dit de cae-lis. Et in car-natus est de spi-ritu

Sancto ex Ma-ria virgine et homo factus est.

Tempore Paschali.

a = = = = = men.

S

anc = = = = = tus. **P**le = ni

sunt coe = li et ter = = = = ra glo = = = = ria.

hu = = = = a osan = = = = na in excel = = = = sis.

A

g = = = = nus dei qui sol = = = = lis

Missa.

pec- ca- ta mun- di mise- re re no- bis.

De Spiritu Sancto

K yri- e = = = = = e = = = =

le- = = = = = i-son. **C**hri- = = = = = se e = = = =

= = = = = le- = = = = = i-son. **K**yrie = = = = =

= = = = = e = = = = = le- = = = = = i-son = = = = =

De Spiritu Sancto

G

ra = = . lias a = = gimus tibi

propter magnam glo = = riam tu = am. Domine fi = li

uni = ge = nite Je = su Chri = = te. Qui tol = lis

pec ca ta mundi sus = = cipe deprecati = o = nem

nostram. Quoniam tu so = lus Sanctus. Tu solus

Missa de Spiritu Sancto.

al-tis-si-mus Je-su Chri-ste.

S an-cus.

pleni sunt caeli et terra glori-a Iu-a

o-sanna in ex-cel-sis.

A gnus dei qui tollis pec-cata mun-di

Missa de B. Maria Virgine.

mi = . se = . . . rere no = = = bis

Missa de B. Maria Virg.

K

y = = = ri = e e = = =

le = = i = son . **C**hris = te e = = =

le = . i = son . **K**y = = = ri = e e = =

le = . i = son .

Missa

G

ratias agimus ti-bi propter

magnam glo-ri-am tu-am **D**omine fi-li

adag.

unige-nite Iesu Chri-ste. **Q**ui tollis

peccata man-di-sus-ci-pe deprecati-o-nem

=nem nostram. **Q**uoni-am tu solus Sanc-tus

de B. Maria V.
Quay.

Tu solus al-tis-si-mus Iesu Chri-

Sanc-

tus. Pleni sunt caeli et terra

glori-a lu-a o-san-na in ex-

cel- sis

Missa.

F *gnus dei qui tol- lis peccata*

mun-di miserere no- = = bis

Missa in Festis Dupl :

K *y- = rie = e = = =*

leison. Chrise =

e = = lei = son.

*K*rie ... eison.

Handwritten musical notation for the first system, featuring a vocal line and a lute line. The vocal line has a large red 'K' and the text 'rie ... eison.' The lute line has a '6' and a '3'.

candens gb. in fine.

*G*ra-tias agimus ti-bi propter

Handwritten musical notation for the second system, featuring a vocal line and a lute line. The vocal line has a large red 'G' and the text 'ra-tias agimus ti-bi propter'. The lute line has a '6' and a '3'.

magnam glo-riam tuam. *D*omine fi-li uni-gi-

Handwritten musical notation for the third system, featuring a vocal line and a lute line. The vocal line has the text 'magnam glo-riam tuam. Domine fi-li uni-gi-'. The lute line has a '6' and a '3'.

adag.
-nitate Je-su Chri-ste. *Q*ui tollis peccata

Handwritten musical notation for the fourth system, featuring a vocal line and a lute line. The vocal line has the text '-nitate Je-su Chri-ste. Qui tollis peccata'. The lute line has a '6' and a '3'.

mundi sus-cipe deprecationem nostram. *Q*uoniam Tu

Handwritten musical notation for the fifth system, featuring a vocal line and a lute line. The vocal line has the text 'mundi sus-cipe deprecationem nostram. Quoniam Tu'. The lute line has a '6' and a '3'.

Missa in Festis Duplic.

Solus Sanctus. Tu so = = tus al li = = si mus Je = = su Chri = = ste.

Sanc = = = = tus. Pleni sunt

coe = li et terra glo = = = = ria tua

o = = = = san na in = = = = ex = cel = sis

Agnus de = i qui tol lis pec = =

Missa in Festis Semiduple:

= cata mundi mi = serere no = = = = bis.

Missa in Festis Semiduple:

K

y = ri = e e = = = = =

= le = i = son. **C**hri = = = = = e = = = = = le = i = son.

Ky = = ri = e = = = = = le = i = son.

G

ra = = tias a gi = mus tibi propter

Missa

magnam glo-ri-am tuam. **D**o-mi-ne

fi-li u-ni-ge-ni-te Je-su Chri-ste. **Q**ui tol-tis

adag.

pec-cata mundi Sus-cipe de-pre-ca-ti-o-nem.

adag.

nostram. **Q**uo-ni-am tu solus sanctus. **T**u so-lus

al-tis-si-mus Je-su Chri-ste.

adag.

in Festis Semiduplic:

S

anc = tus. Ple = = ni sunt ca =

= li et ter = ra glo = = ri = a tua o =

= sar = = = na = = in ex = cel = = sis

A

g = nus de = i qui tol = = = lis

peccata mun = di mise = re = re no = bis

Missa de Virginibus

K y = ri = e e = = =

lei = le = i = son

Chri = = te e = = = = =

leison. **K**yrie = = = = = leison.

Gloria et ut supra fol. 13.

Sanc = = = = tus

Ple = = ni su = nt caeli et = =

= = ler = ra glori = a lu = = a

o = = Sanna in = = = = et =

= cel = = sis.

F

g = = nus de = = i gui =

= = = tol = = tis peccata mun = di miserere no = = = = bis.

Credo

P

atrem omnipo-ten-tem factorem caeli et

ter-rae visi-bili-um omni-um et in-

adag.
= visi-bili-um. Et in unum dominum Je- = sum

Christum filium dei uni-ge-nitum. Et ex

patre na- = = tum ante omnia se-cu-la.

Primum.

Deum de deo lumine lumine deum verum de deo

ve-ro: geni-tum non factum consubstanti-a-lem

Pa-tri per quem omni-a facta sunt qui propter nos

homines et propter nostram salutem descen-

dit de caelis. Et in carnatus est de spiritu

Credo

sanctus ex Maria virgine et homo factus est.

a = = = = = men.

Credo Secundum

Patrem omnipotentem factorem caeli et ter = = = = =.

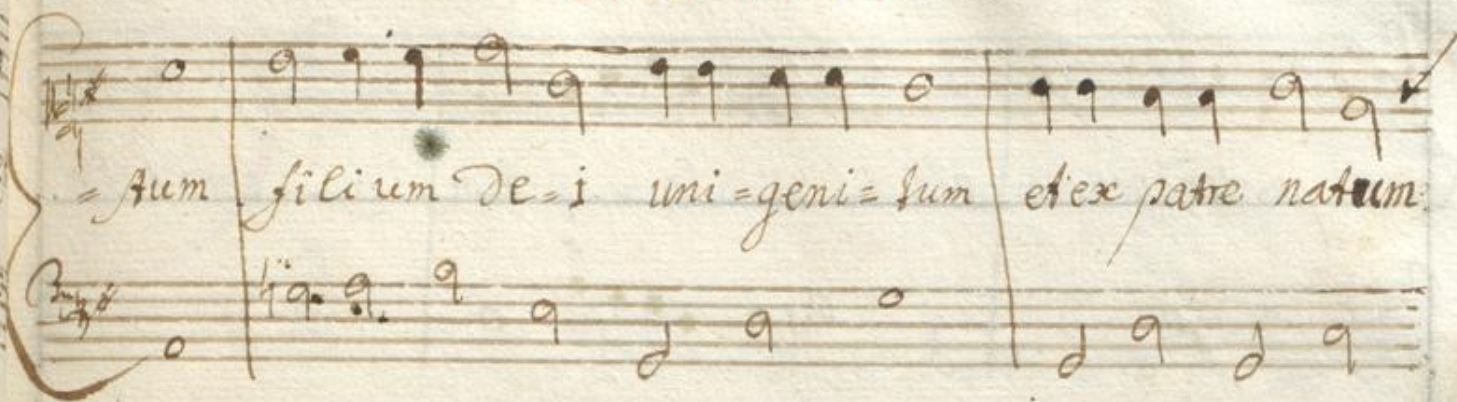
= = = = = visibilium om = = = = = nium et invisibi = = = = = li = = = = =.

adag.

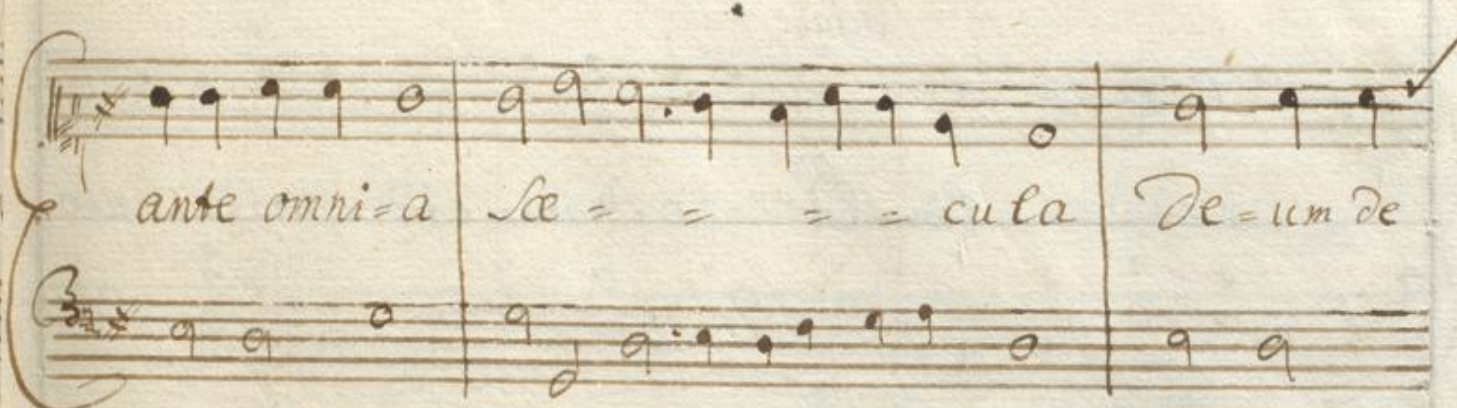
= = = = = um: Et in unum do = = = = = minum Je = = = = = sum Cri = = = = =.

Secundum.

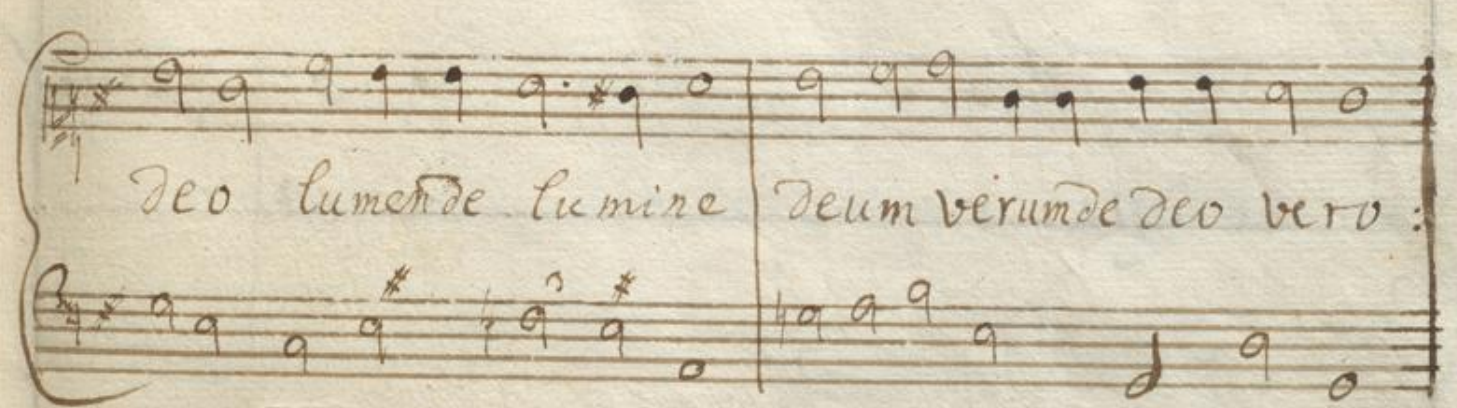
Sum filium dei unigenitum et ex patre natum



ante omnia secula Deum de



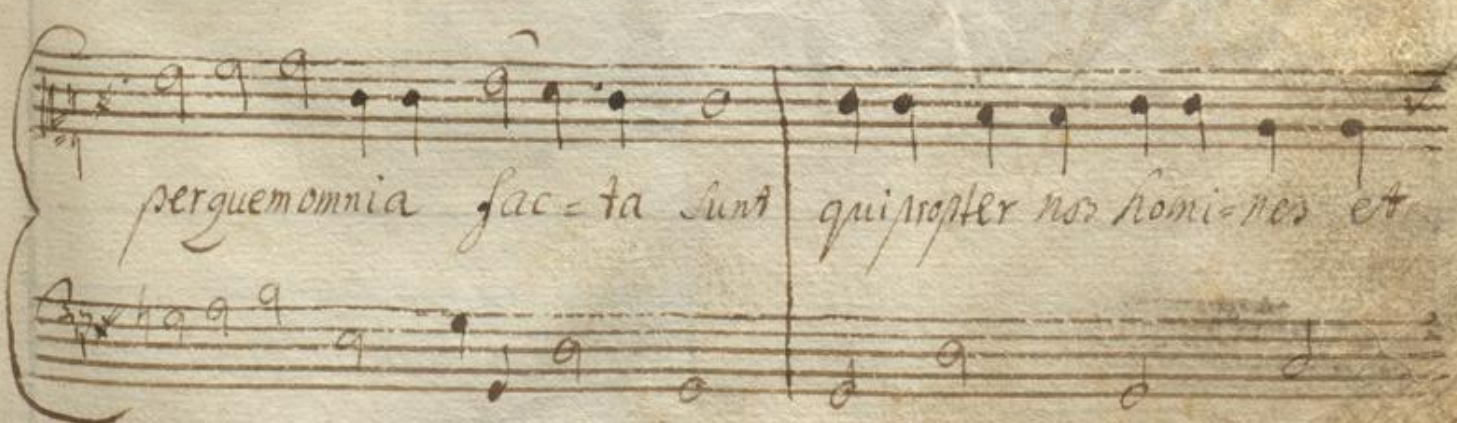
deo lumine deum verum de deo vero:



genitum non factum consubstantialem patri



per quem omnia facta sunt qui propter nos homines et



Credo Secundum.

propter nostram sa = = lu = = tem des = cendit de.

adag.

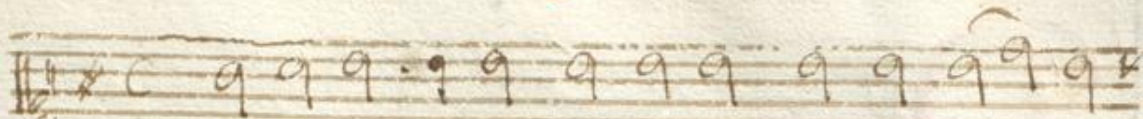
ca = = = lis. Et incar = natus est de spiritu sancto

ex Maria virgine et homo factus est. a = =

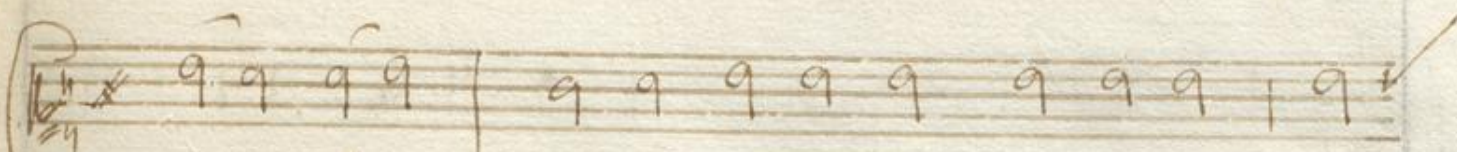
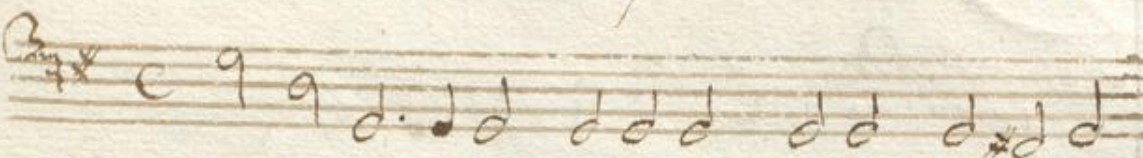
= = = = = men.

D

*Cantatur
Sequens.*



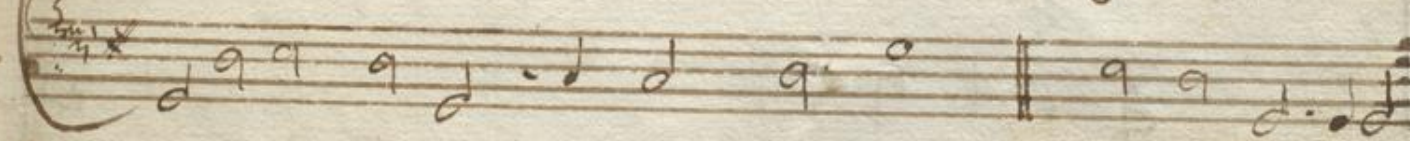
o = = mine da pacem in die = = bus



nos = = tris : et exaudi nos in die qua



invo = ca = ve = rimus te . Glo = = ria



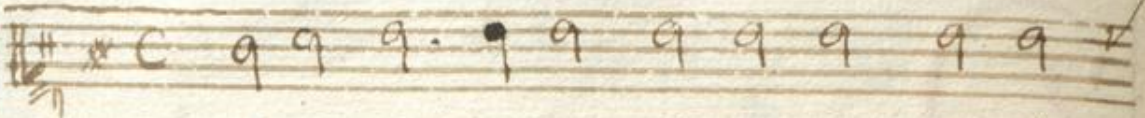
Pa = tri et fi = = li = o ; et spi = ri = tui



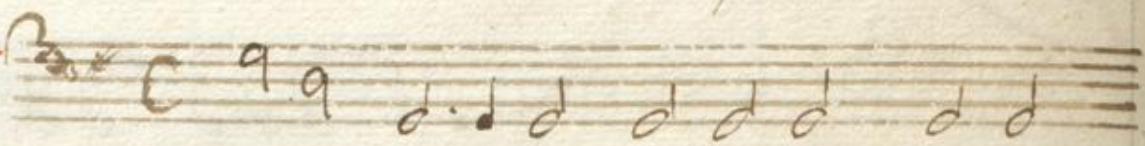
Sanc = to . . .



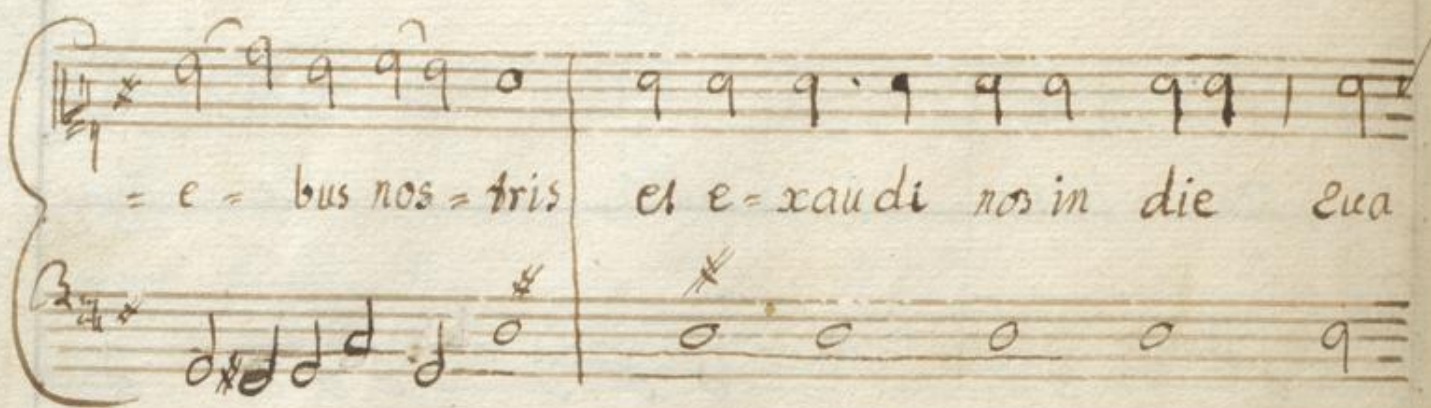
Versus post Agnus etc. loco Com. cant.

D 
 o = = mine da pacem in di =

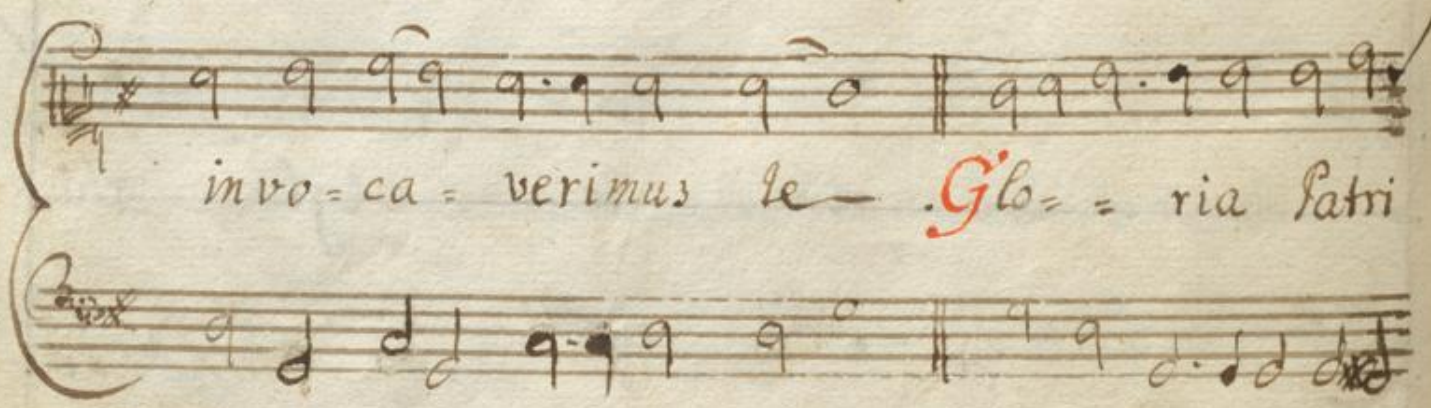
Repetitur
ter.



= e = bus nos = tris et e = xaudi nos in die tua



invo = ca = verimus te - **G**lo = = ria patri



et fili = o et spi = ri = tu = i sancto . **S**i = cut



erat in princi = pi = o et nunc et sem = per et in saecula



Missa de Requiem

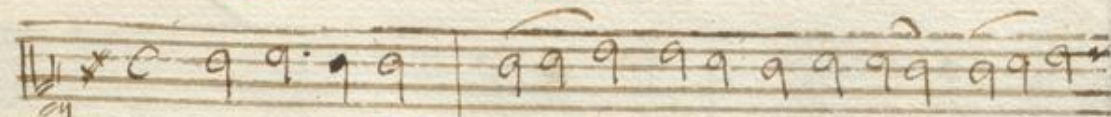


Secu=lorum a=men

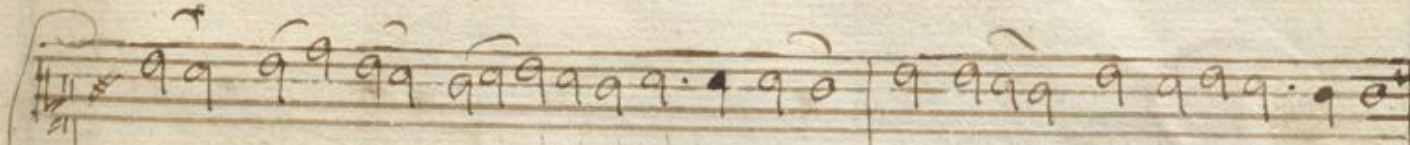
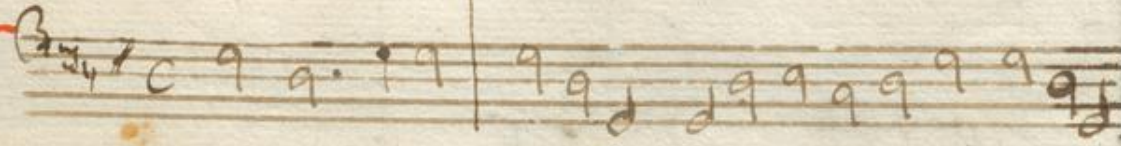


Missa de Requiem

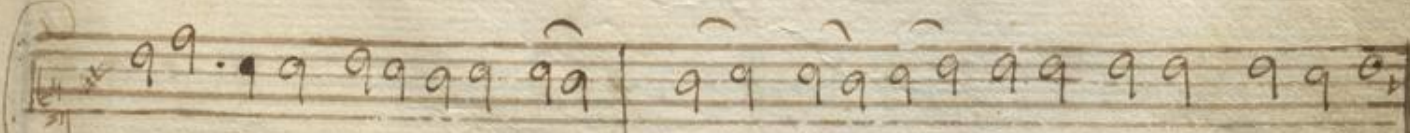
R



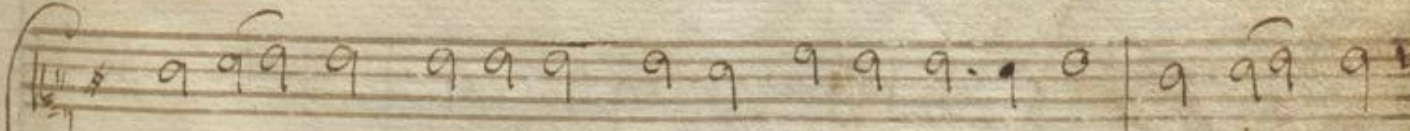
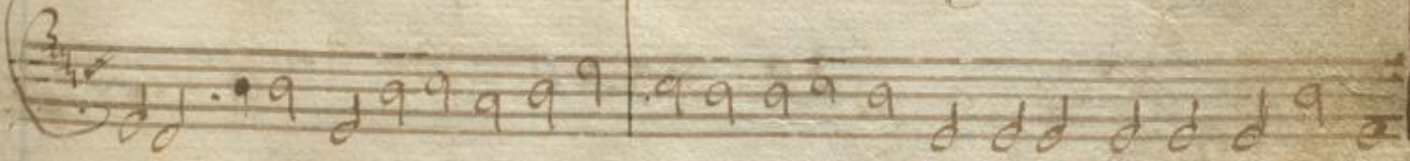
E=quiem æ=ter=nam do=



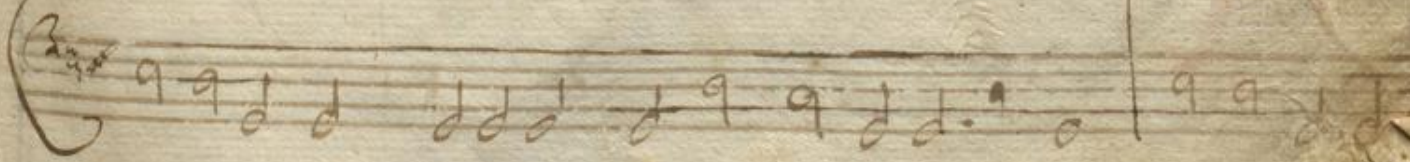
=na e=is do=mine et lux perpe=tua



tu=ceat e=is. Te de=cel hymnus deus in sion



et ti=bi redetur votum in Je=rusalem exau=di



Missa

ora = ti = onem me = am ad te om nis cae = ro veni =

et. re = quiem G. G.

Ry = ri = e = = = lei = son ..

Chri = ste e = = lei = son. Kyri = e e = = lei = son.

R e = = quiem eter = = nam dona e = =

de Requiem

is do = mine - et lux perpe = tua

luceat e = is. In memo = ri = a

æter = na e = rit Ju = sus abaudi = ti = o

o = ne ma = ta non = ti = me = bit.

D

o = mine Jesu Chri = ste Rex

Missa

glo-ria li-bera a-nimas omnium

fide-lium de-functorum de-poe-

=nis inferni et de profundo lacu

libera eas de ore leonum ne absorbe-

=at eas farissarus ne cadant in ob-

de Requiem.

Handwritten musical notation for the first system, consisting of two staves. The lyrics are: = scu = = rum sed Sig = nifer Sanctus Mic = =

Handwritten musical notation for the second system, consisting of two staves. The lyrics are: = hael representet e = = as in

Handwritten musical notation for the third system, consisting of two staves. The lyrics are: lu = = cem Sanc = = tam. **Q**uam o = lim

Handwritten musical notation for the fourth system, consisting of two staves. A large red initial 'S' is written on the left. The lyrics are: anctus Sanctus Sanctus Domi =

Handwritten musical notation for the fifth system, consisting of two staves. The lyrics are: = nus deus Saba = oth pleni sunt caeli et

Missa

terra glori-a hica. osanna in ex cel-

= sis. **B**ene-dictus qui venit in nomi-ne

do-mi-ni osan-na in ex-cel-sis

Fgnus de-i qui tollis

peccata mundi dona e-is re-gui-em.

de Requiem

Musical notation for the first system, featuring a treble clef and a key signature of one flat. The notes are quarter notes and a half note.

Sempi-ter-nam

Musical notation for the second system, featuring a bass clef and a key signature of one flat. The notes are quarter notes and a half note.

L

Musical notation for the third system, featuring a treble clef and a common time signature. The notes are quarter notes and a half note.

ux æ-ter-na luceat eis Domi-

Musical notation for the fourth system, featuring a bass clef and a common time signature. The notes are quarter notes and a half note.

Musical notation for the fifth system, featuring a treble clef and a key signature of one flat. The notes are quarter notes and a half note.

ne **C**um sanctis suis in æter-num quia pi-us es,

Musical notation for the sixth system, featuring a bass clef and a key signature of one flat. The notes are quarter notes and a half note.

Musical notation for the seventh system, featuring a treble clef and a key signature of one flat. The notes are quarter notes and a half note.

Requiem æternam dona eis Domine et lux per-

Musical notation for the eighth system, featuring a bass clef and a key signature of one flat. The notes are quarter notes and a half note.

Musical notation for the ninth system, featuring a treble clef and a key signature of one flat. The notes are quarter notes and a half note.

-pe-tua luceat eis. **C**um sanctis s. s.

Musical notation for the tenth system, featuring a bass clef and a key signature of one flat. The notes are quarter notes and a half note.

In Sabbatho S. Sub Agno dei At. Vespera.

A alle-lu-ia alle-lu-ia

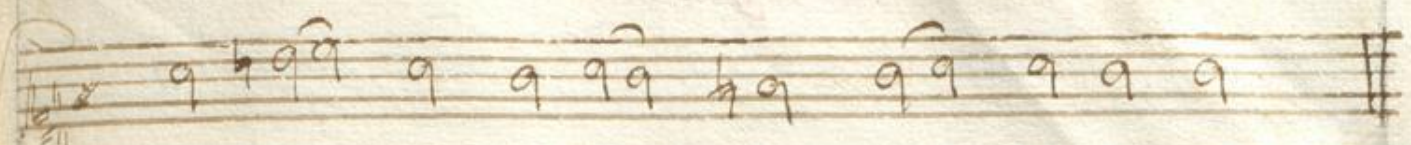
alle-lu-ia. **L**auda-te e-o. **V**i-tonj.

Post Sumptionem Celebri: intonat Antiph:

Ves-pere autem Sab-bathi

Quia lucescit in prima Sabbathi venit Maria

Magda-le-ne et aeterna Ma-ri-a



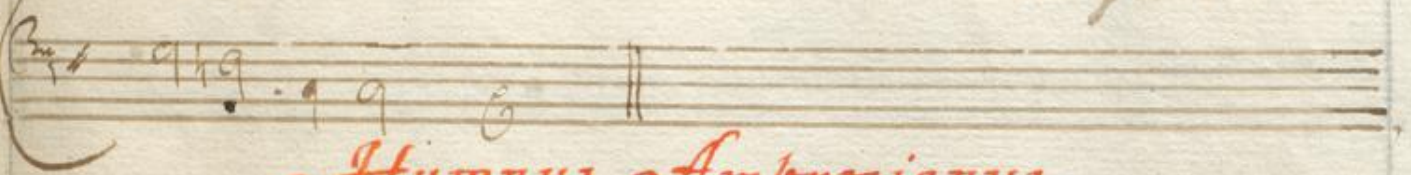
vi=de= re se= pul= chrum al= le= lu= ia.



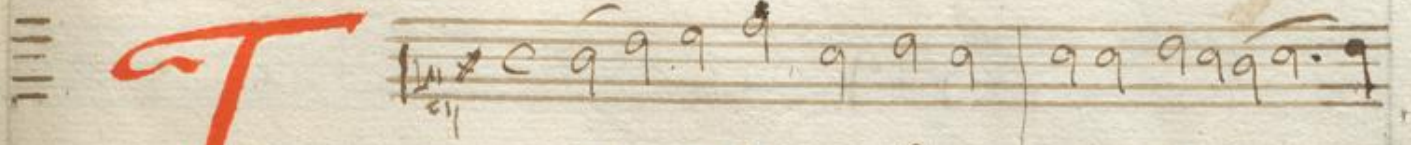
M. G. Maria Magdalene
Cantatum in Refectoriis
ante quatuordecim dies
in Sepulchrum ipsius
in fine.



Magnificat e. e. VIII. Toni.

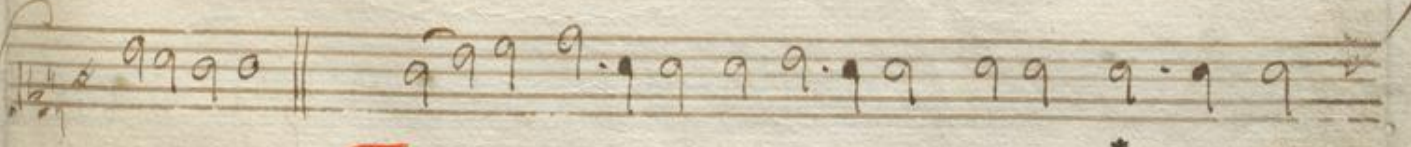


Hymnus Ambrosianus.

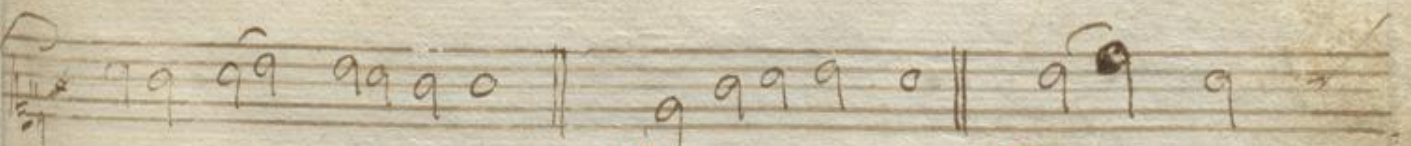
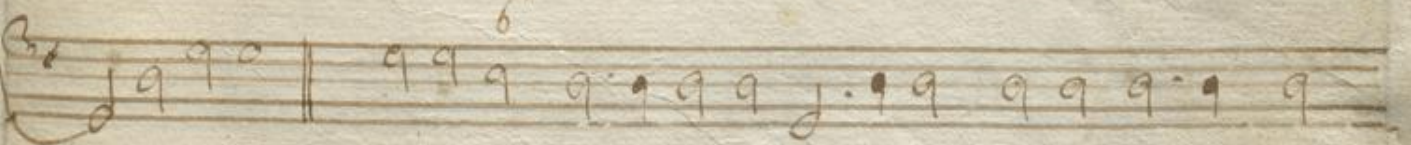


T

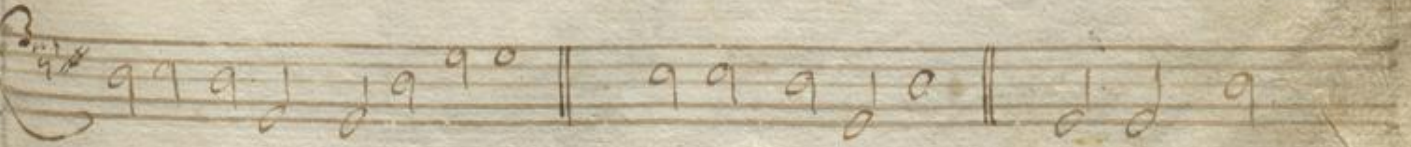
e ceternum Patrem omnis terra ve=ne=



=ra= =tur. **T**i= bi cherubin et seraphim incessa= =bili



voce pro= cla= munt. **S**anc= = =tus. **P**le= = ni



Hymnus

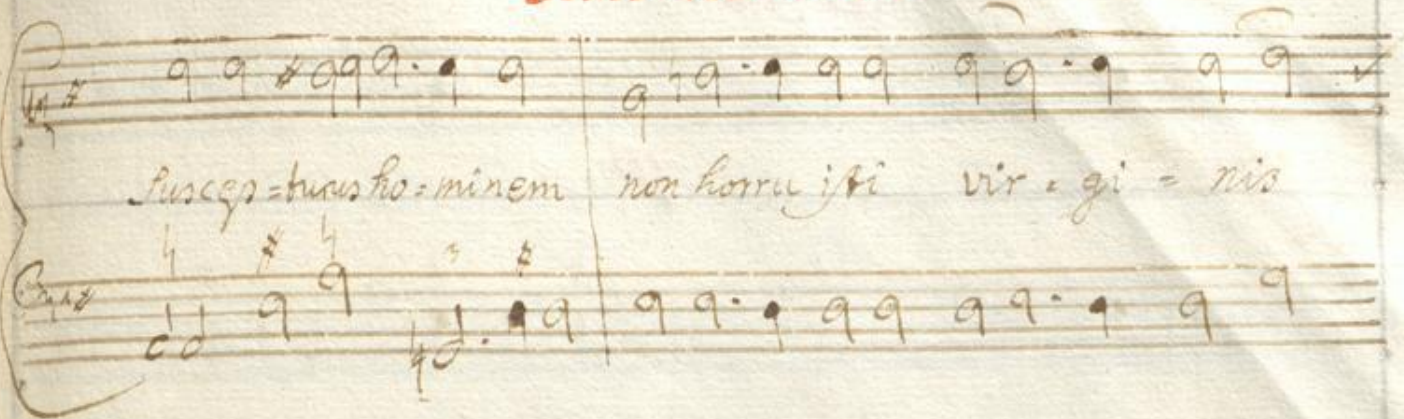
Sunt caeli et terrae majestatis glo: ri: ae tu = = ae .

Te Prophetarum lauda = bi = lis nu = merus .

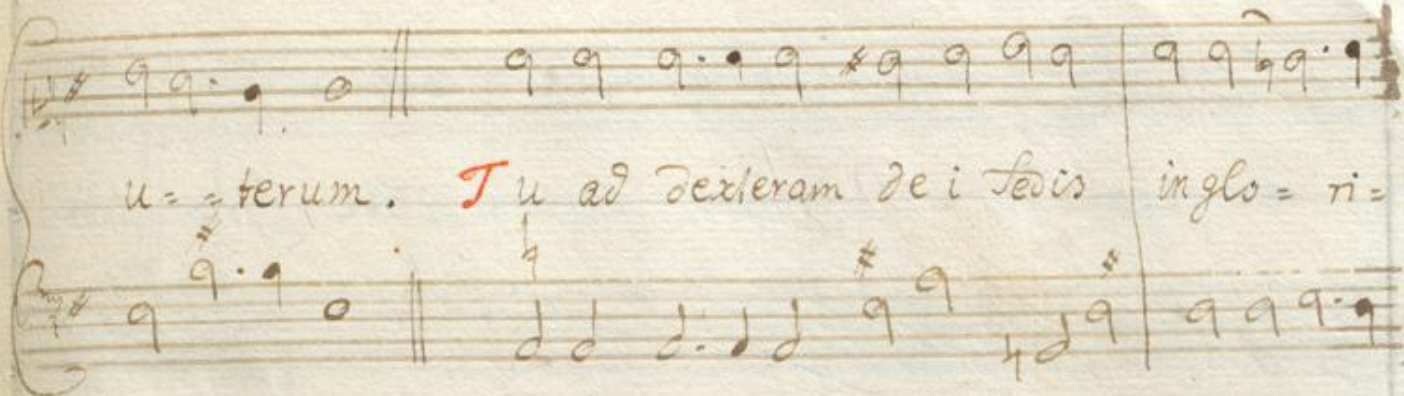
Te per orbem terrarum sancta confite = tur Ec = cle = si = a .

Ve = = nerañdum tuum verum et u = = ni = cum fi = lium .

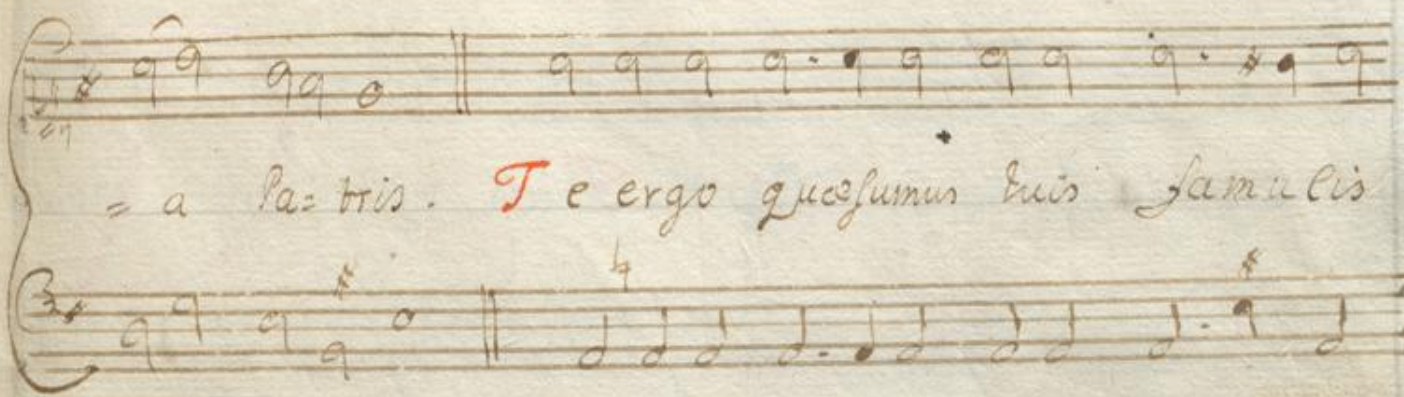
Tu rex glo = ri = ae Chri = ste . **T**u ad liberañdum



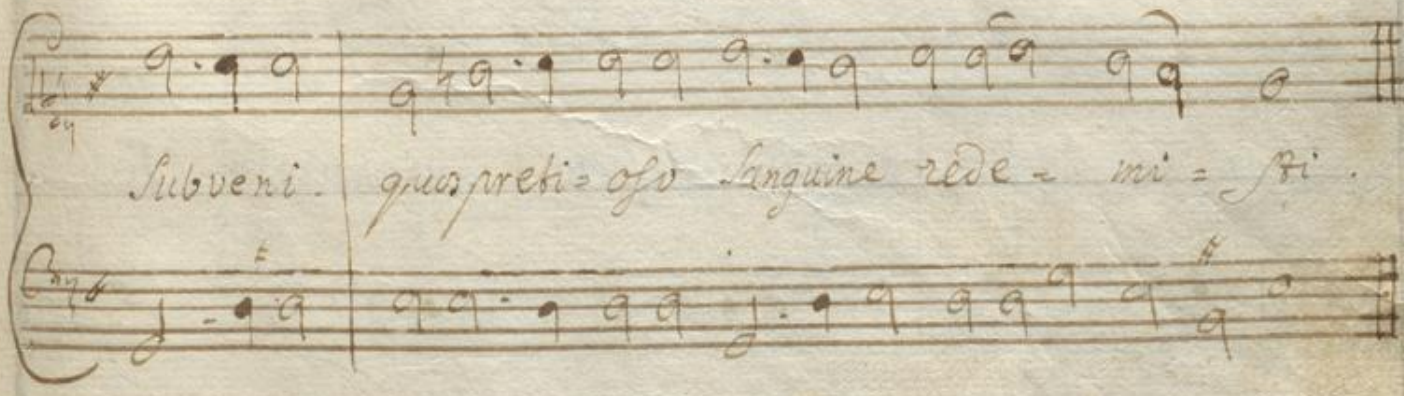
 suscep-tus ho-minem non horru-isti vir-gi-nis



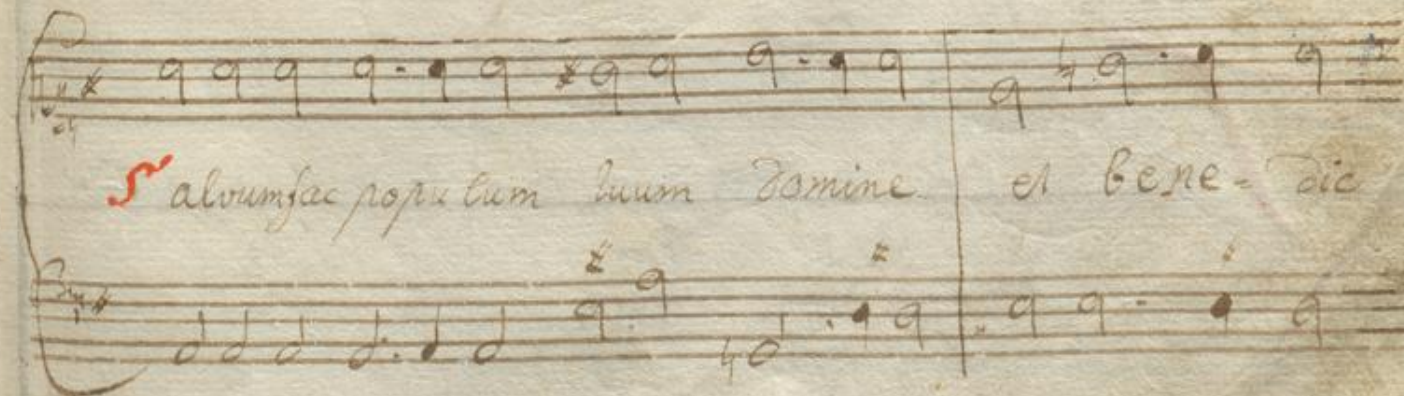
 u-terum. **T**u ad dexteram dei sedis in glo-ri-



 = a Pa-tris. **T**e ergo quesumus tuis famulis



 Subveni. quos pretio-oso sanguine rede-mi-isti.



Salvum fac populum tuum Domine et bene-dic

Hymnus

heredi-ta-ti lu-xa. **P**er singulos dies benedi-

-ci-mus Te. **D**ignare Domine die isto sine

peccata nos custo-di-re. **F**iat misericordia tua.

Domine Super nos quemadmodum spera-vimus in Te.

Hymnus post Evangelium

Te decet laus te decet hymnus Tibi.

glori-a Deo Patri et filio cum sancto spiritu in lae-

= cula saeculo-rum. A- - - - - men .

Suffragium de S. Blasio in horis minor:

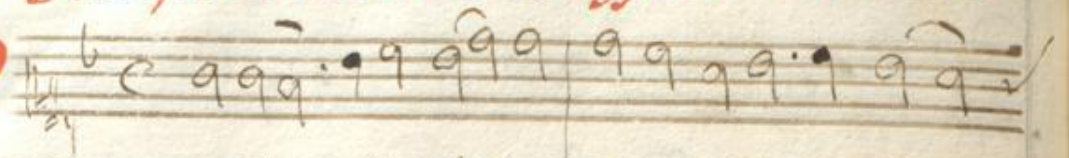
Domine Jesu Christe verus deus no-ster

per orati-onem Servi tui Blasii festina in adju-

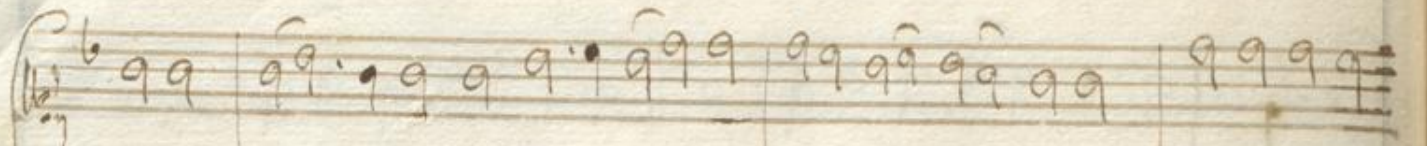
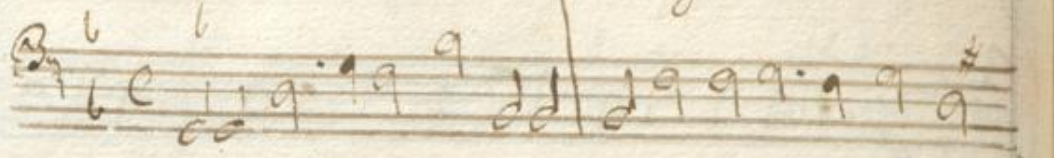
= torium no- - - - - strum. alleluia

Antiph. de B.V. ante Officium Summum

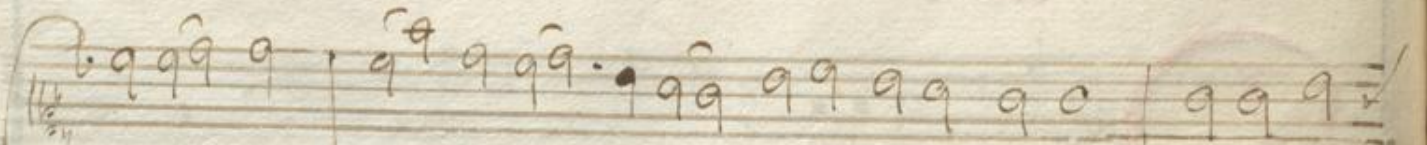
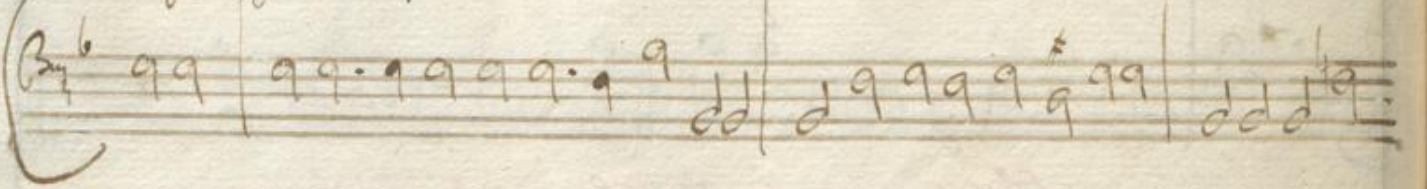
N



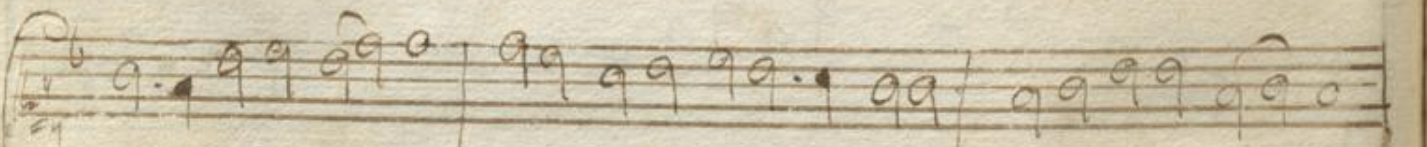
ali-vitas tua dei. ge-ni-trix



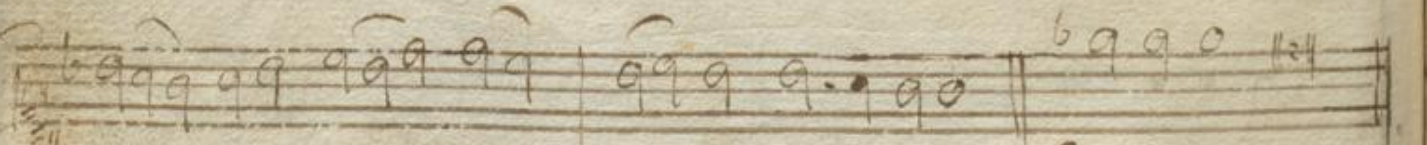
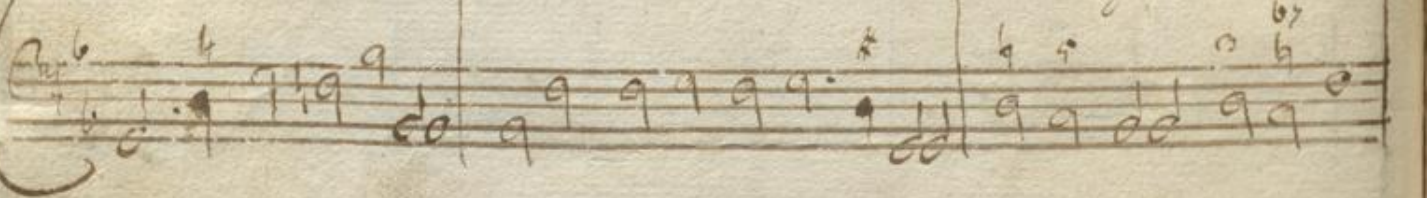
virgo gaudium annuntia-vis univer-so mundo ex te enim



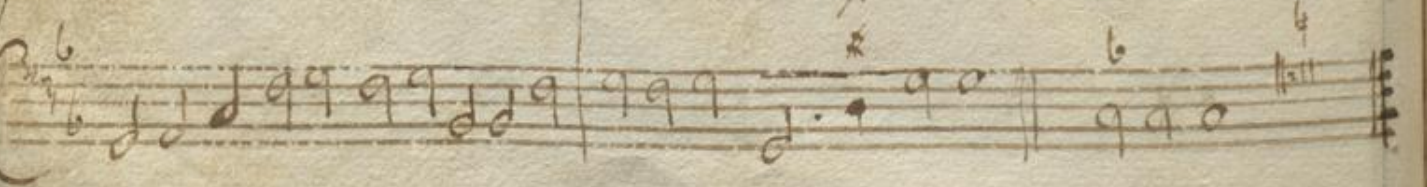
ortus est sol justi-tiae Christus deus noster qui solvens



maledictio-nem dedit benedic-tionem et confidens mortem



do-navit no-bis vitam sempiternam. alleluia



Hymni de Festis per Annum.
In Nativitate Domini.

A

Solis ortus sidere ad usque

Terra li- = mitem Chris- tum canamus Princi- pem

nam Maria virgi- ne . . . amen

In Festo S. Patroni N. Blasij.

T

e simul suis precibus rogamus civium

factor mane- as lu- orum ad thronum Christi memor.

esto nostri opus = time Blasi . a - men

In Festo Nominis Jesu

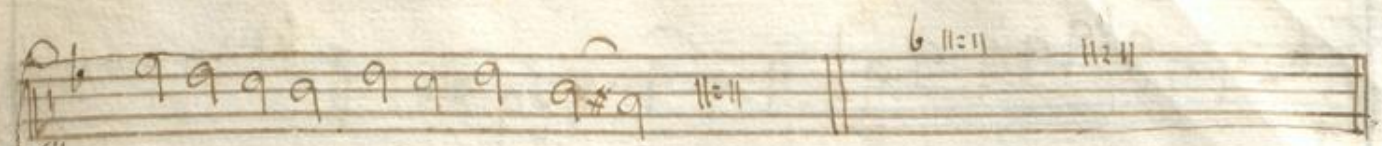
Jesu dulcis memoria tam vera condigniora

Sed super mel et omnia eius dulcis presentia . amen

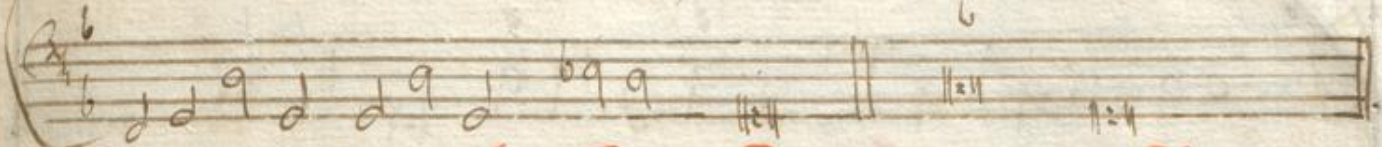
In Festo S^mi Pⁱ Benedicti

Laudibus civis resonent canoris templis

lemnes modulenti hymnis rare = *Die S^mi Benedictus*

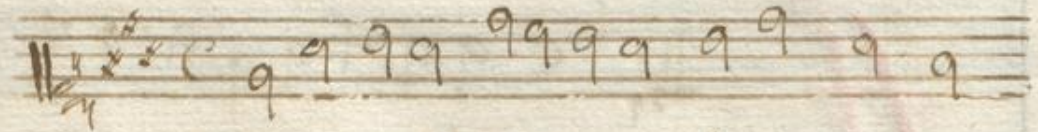


ar = cem scandit o = lym = pi . a = men

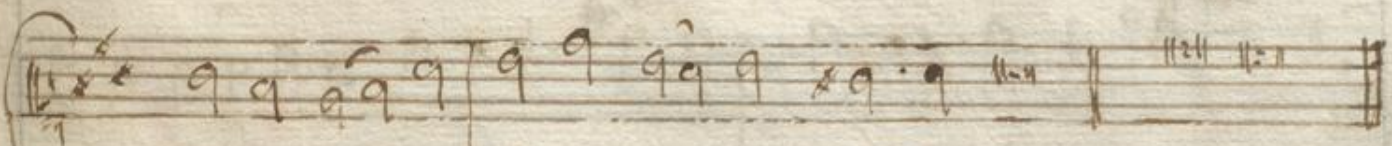
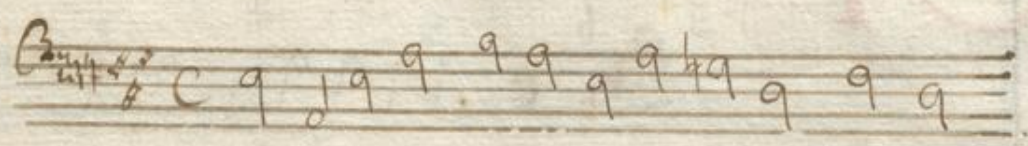


In Feste Dolorum B. V.

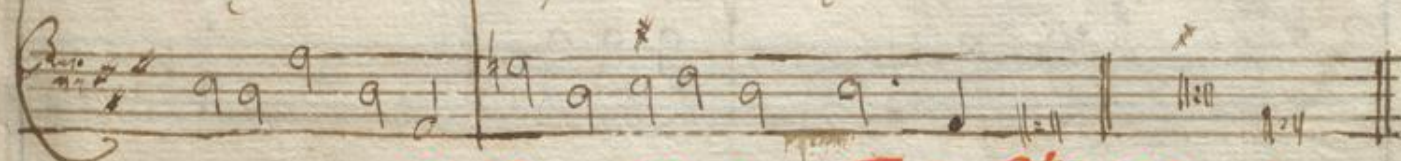
S



tabat Mater dolorosa juxta crucem

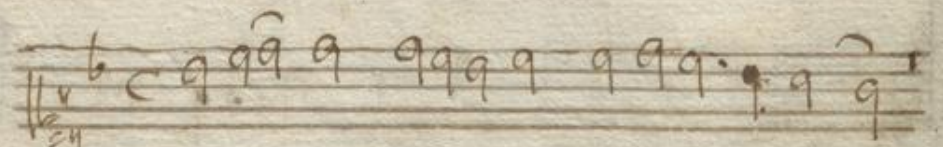


lacrymo = sa Impende = bat fili = us . amen .

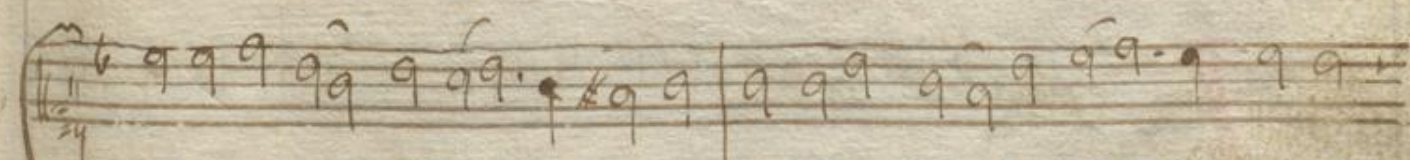
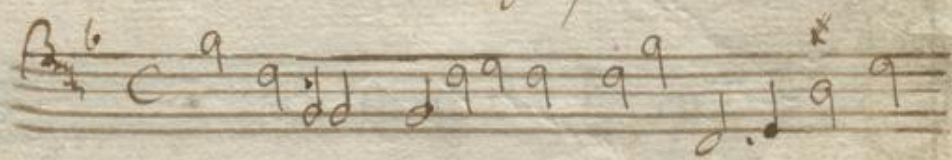


In Dom. Pass. et Fest. S^{te} Crucis.

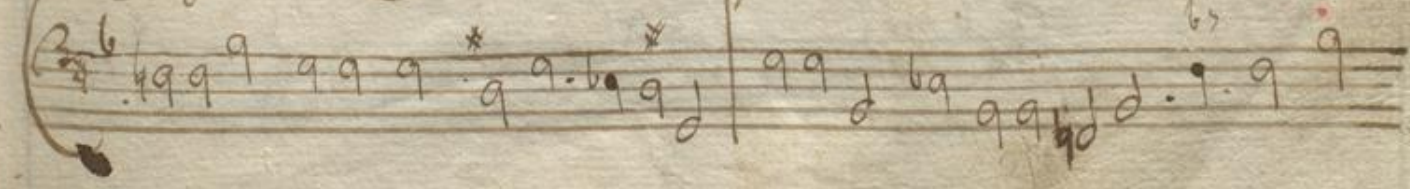
V



exile a Re = gis mo = de = unt



fulget crucis myste = ri = um quo came carnis con = di = tor



suspen = = sus est pati = = bu = lo . amen .

In Dom. Resurrectionis.

A

d coenam agni providi et solis

al = bis candi di posthan = = situm maris ru = bri

Christo cana = = mus brinci = pi . a = men

In Ascensione Dni

J

ESU = = nostra redemp = ti o

amor et desi = derium de = us crea = tor omnium.

homo in fi = ne = tem = porum. amen.

In die Pentecostes.

Veni Cre = ator spiritus mentes

tuorum visita imple su = perna gratia que

lucie a = si pec = = = tora. a = men.

In Dominicis per Annum et F. B. ma Trin

O

O lu = = x beata Tri = ritas et in = = ci palis u =

= ritas iam sol re cedit igneus infunde lumen cordibus. amen.

In Solemnitate Corp: Christi
In Vesp: et officio

P

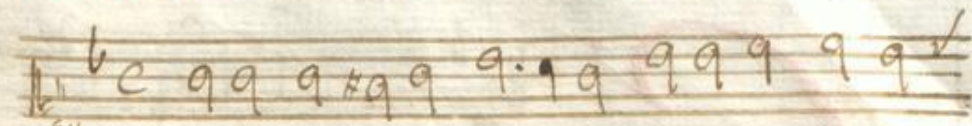
angelina glorio = = si cor = poris my =

= teri = u = m sanguinisq; meli o si quem in mundi meti um

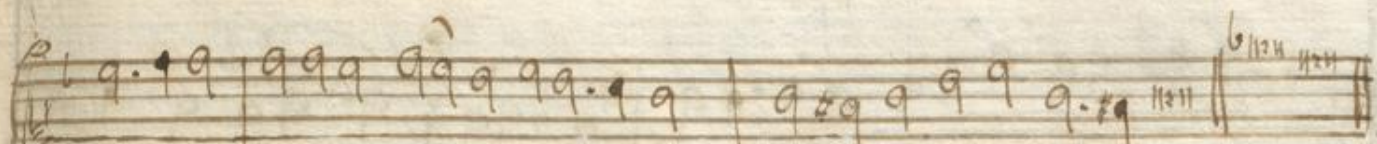
fructus ventris generosi rex egudit gen = = tium. a = men.

In Audibus.

V



erbum Syrenum prodiens nec talis linguens

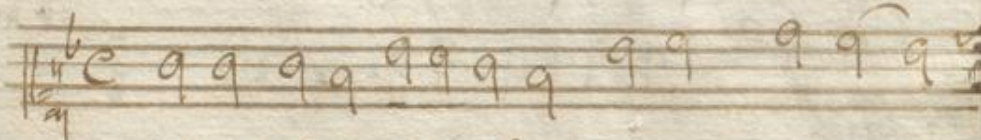


Dexteram ad gus suum exiens venit ad vitæ vesperam. amen.

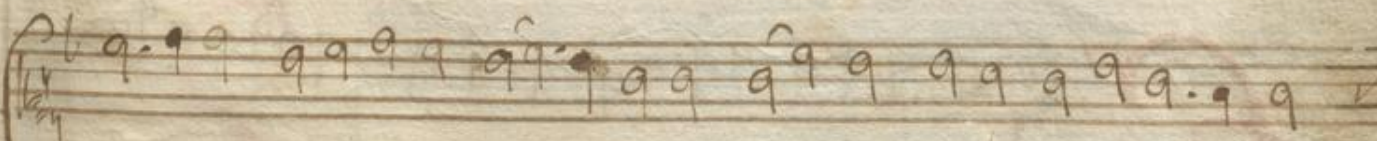
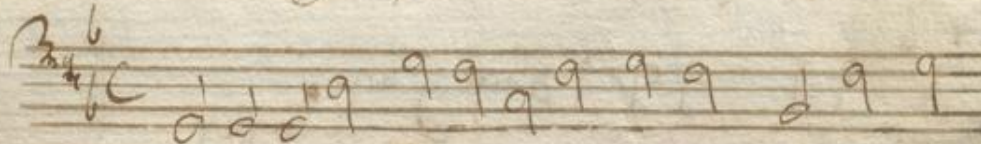


In Festo S. Michaelis Archang.

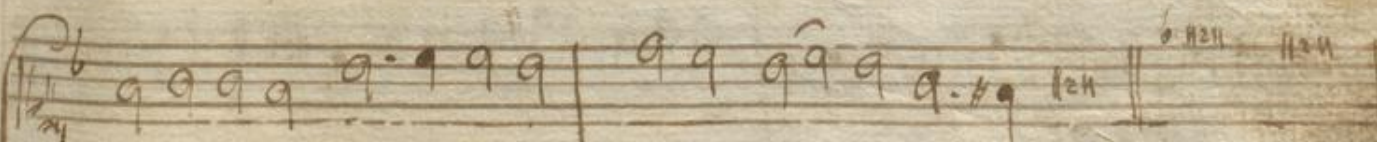
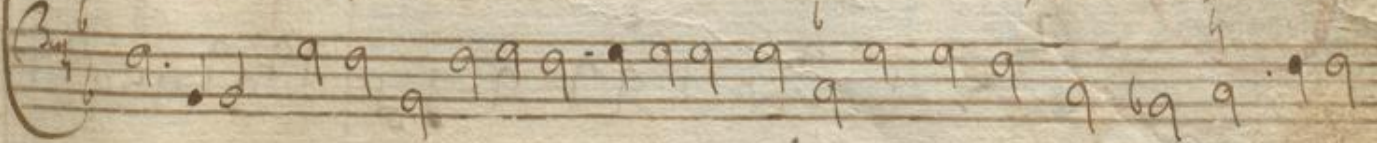
T



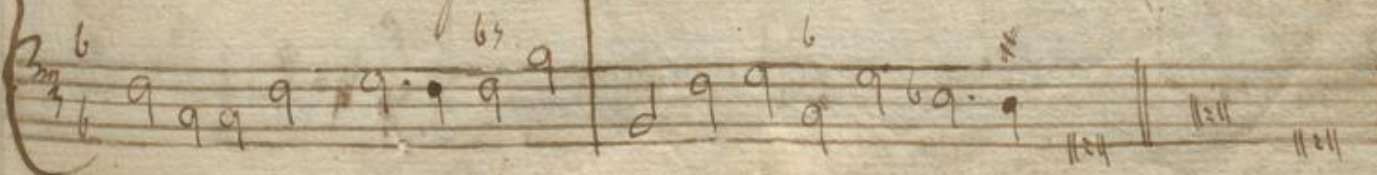
ibi Christe gloriosæ vitæ virtus



cordium in conspectu angelorum vobis voce psalimus



alternantes concrepando melos damus vocibus. amen.



In Festo Om: Sanctorum.

48.

C

Chri = ste re = dem ploz om = nium

con = serva tu = os fa = mulos be = ata sem = per virgi nis

placa = tus sanctis pre = cibus a = men

In Festis S: Apostolorum.

C

exulet celum laudibus refullet terra

gaudi = is apo = stolorum glori = am sacra canunt solem = nia . amen

Hymni

ani-mus pro-me-re cantibus violonum genus optimum. amen

In Festis Confess: Pont: et non Pont.

J se confessor domini sacratus festa

plebs cuius celebra per orbem hodie lae-tus meruit se-

cre-ta scan-de-re cae-li. amen

In Festis Virginum

J esu coronavirginum quem mater illa cor = =

per Annum.

Handwritten musical notation for the first system, consisting of a treble staff and a bass staff. The lyrics are: *cipit quae sola virgo parterit haec vota*. The notation includes various note values and rests.

Handwritten musical notation for the second system, consisting of a treble staff and a bass staff. The lyrics are: *Cle-mens ac-c-i-se a-men*. The notation includes various note values and rests.

In Dedicatione Ecclesie

Handwritten musical notation for the third system, starting with a large red initial *U*. The lyrics are: *Urbis Jeru-salem beata dicta pacis*. The notation includes various note values and rests.

Handwritten musical notation for the fourth system, consisting of a treble staff and a bass staff. The lyrics are: *vifio quae con-strui-tur in cae-lis vivis ex lapi-di-*. The notation includes various note values and rests.

Handwritten musical notation for the fifth system, consisting of a treble staff and a bass staff. The lyrics are: *=bus et an-gelis coro nata ul-fionata comite. amen..*. The notation includes various note values and rests.

Hymnus in Festis B. V. ad Vesperas.

A

ve ma = ris fel. la dei Mater al. =

= ma alque semper vir: = go felix celi porta. amen

In Laudibus.

Q

uem ter = ra pontus aethera co = lun. a =

= dorant pra = dicant Trinam regentem machinam claustrum

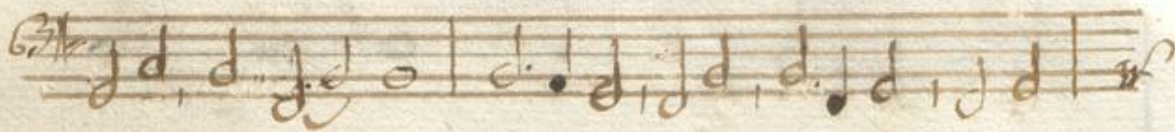
Mari = e ba = iulat. amen

Antiph: post Miss: Sum: in Adventu cant: 53.

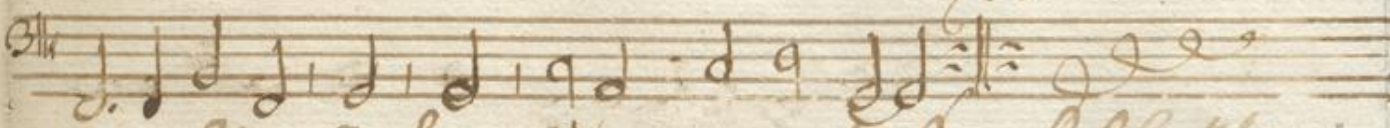
A



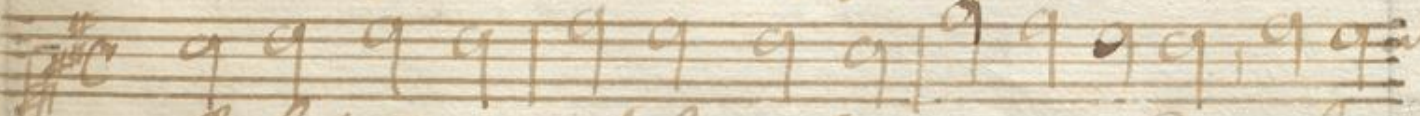
— ve Mari — a, gratia plena, Coming tecu,



benedicta Tu in mu lie ribus. *Repetits ter.*



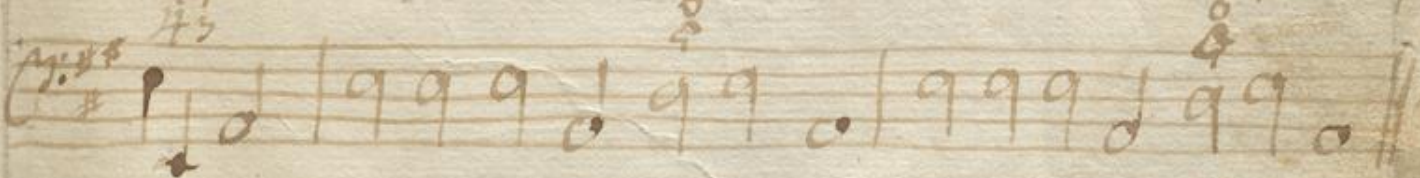
Ms Stabat Mater in diebus Sabbathinis tempore Quadragesse post Completz decantandu.



Stabat Mater dolorosa iuxta Crucem lacry



mosa dum pendebat Filius dum



94.

Responsoria Brevia

In Festo Corporum
D. M. V.

P

o = sua me de - so ca - tam

tota die merore confectam. gloria patri et fi - lio

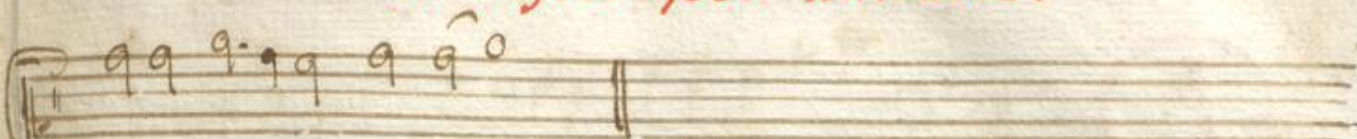
et spi - ritu - i sanc - to

In Festis Quibuscumq; extra te: Pasch.

A

manit eum do: minus et orna: vit eum.

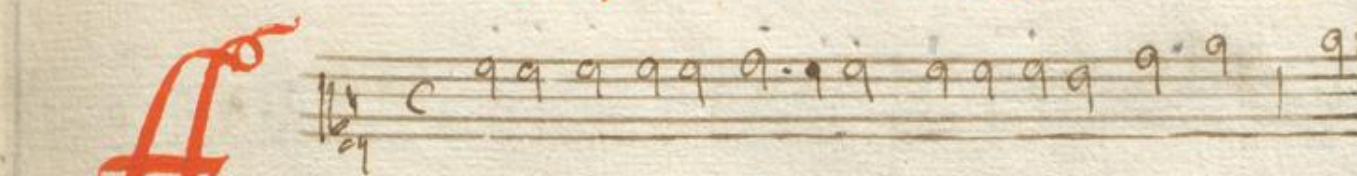
Adam glo - ria induit e - um. gloria patri et fi - lio



et Spi-ritui Sancto

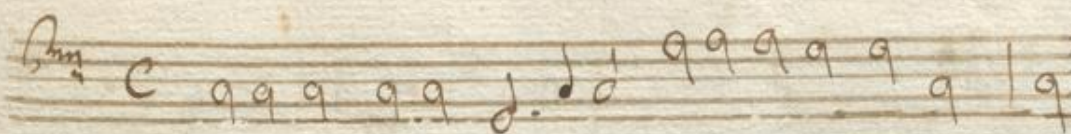


Tempore Paschali.

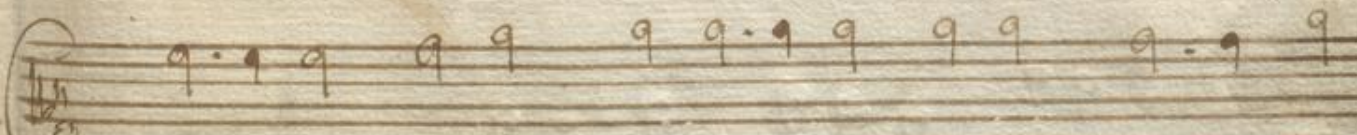


A

marit eum Dominus et ornavit eum al-



-le-luia alle-luia. Solam gloria induit eum.



gloria patri et filio et Spi-ritui



Sancto



In Vesperis I.^{ma} Classis.

B

ene dicamus do - - - - -

mi - no

In Festis Dupl: et II.^{da} Classis.

B

ene dica - - mus do - - - - -

mi - no

In Festis Semiduplicibus.

B

e - ne di - camus do - - - - -

In Vesp: de B. M. V. et T. Pasch.

mi no

In Festis de B. Maria V.

B

e ne dicamus do

mi no

Tempore Paschali per Octav.

B

ene dicamus domino alle lu - ia

alle lu - ia

60.

Schema Tonorum

Primi Toni A.

D

ixit Dominus Domino meo Sede a dextris

AH.

AP.

me = = is. *Sede a dextris meis*. *Sede a dextris me = = is.*

AQ.

Sede a dextris me = is.

Secundi Tonj.

E.

D

ixit Dominus Domino meo Sede a dextris

meis

I.

Tertij Tonj.

61.

D

ixit Dominus Domino meo. Sede a

IB.

IK.

dextris meis. *Sede a* dex-tris me-is. *Sede a*

dex-tris me-is.

Quarti Tonj.

O.

D

ixit Dominus Domino meo. Sede a dextris meis.

OB.

OH.

Sede a dextris meis. *Sede a* dextris me-is.

62.

V. *Quinti Toni*

D

ixit Dominus Domino meo sede a

dextris meis

N. *Sexti Toni*

D

i-xit Dominus Domino me-o

sede a dextris meis

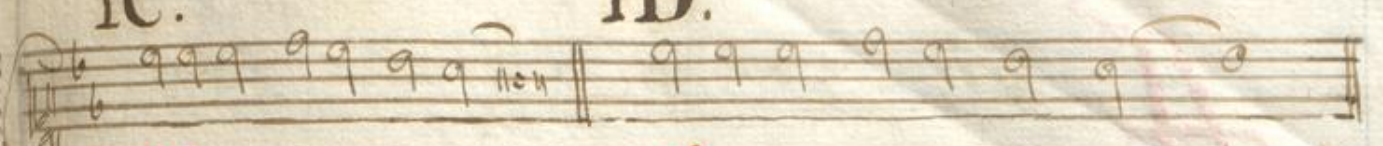
YB. *Septimi Toni*

D

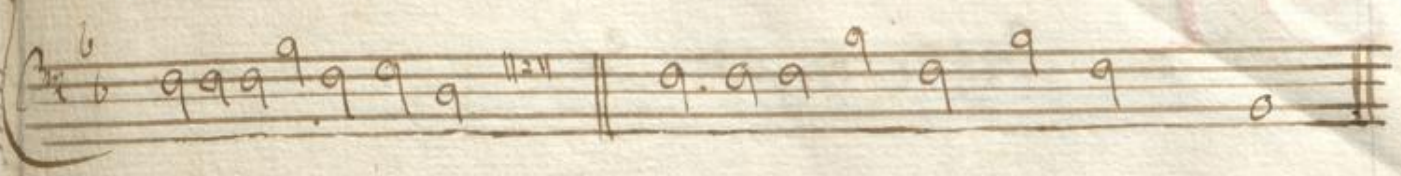
di-xit Dominus Domino meo sede a dextris meis

YC.

YD.

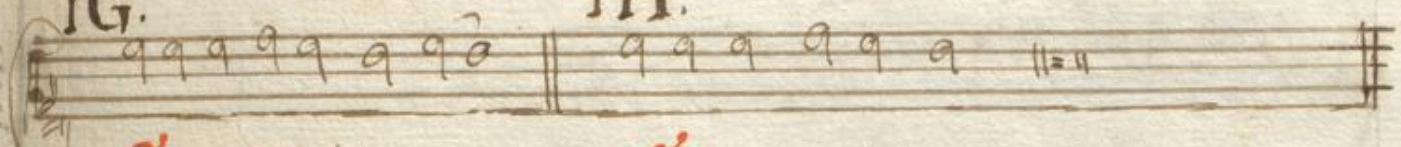


Sede a dextris meis. Sede a dextris meis.

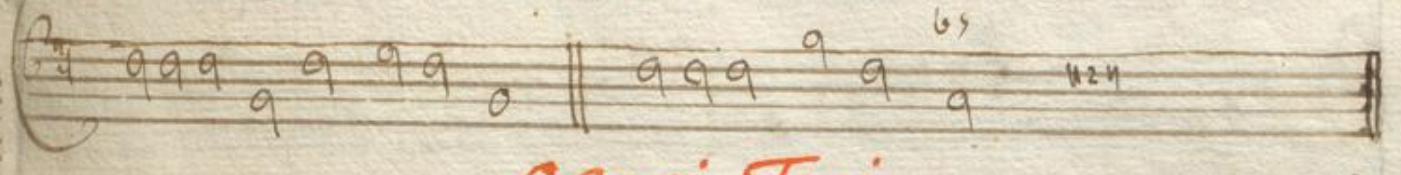


YG.

YH.



Sede a dextris meis. Sede a dextris meis.



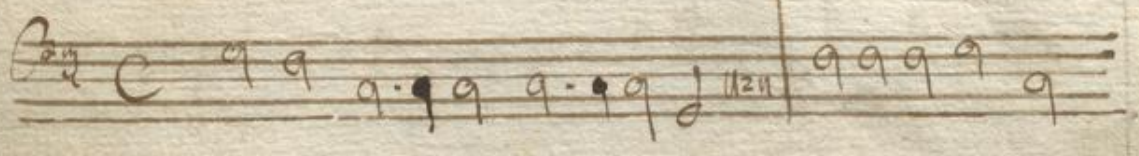
Octavi Toni.

W.

D



ixit Dominus Domino meo Sede a dextris

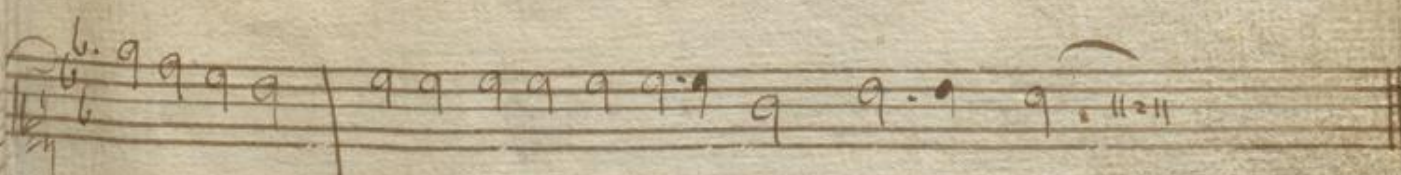
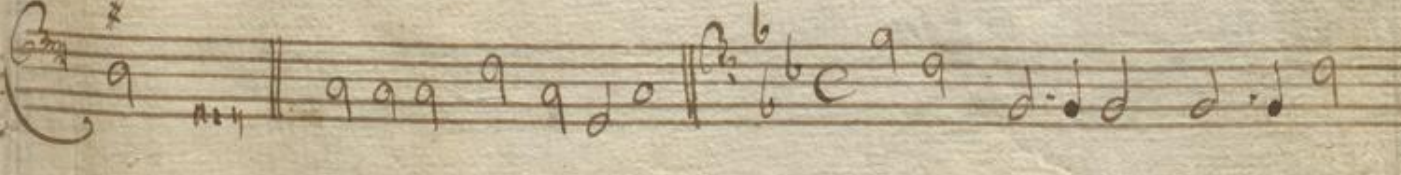


WG.

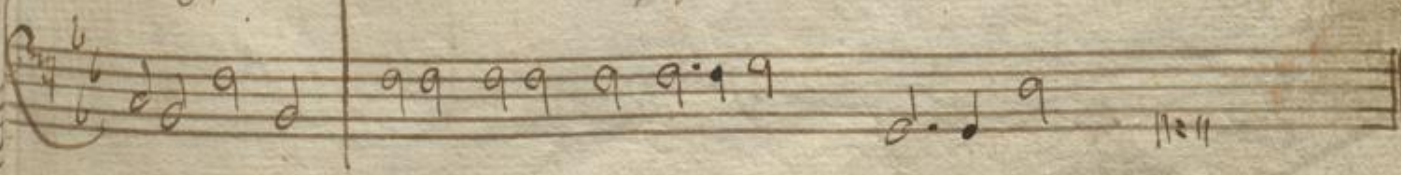
WI.



meis. Sede a dextris meis. In Exitu Isra- el



de aegypto domus Jacob de populo Barba- ro



Antiphona de B. v.

64.

A

ma redemptoris Ma-ter

que per- via caeli por- ta ma-nes et stel- la

ma- ris Succur- re ca- den- ti Surgere qui cu- rat

populo Tu qua ge- ni- ti na tu- ra

miran- te Tuum Sandungeni- fo- rem vir- go

Ab Adventu usq; ad Purificationem

Handwritten musical notation for the first system, consisting of a vocal line (treble clef) and a lute line (bass clef). The lyrics are: pri = us ac po = steri = us gabri = e = lis ab o = re =

Handwritten musical notation for the second system, consisting of a vocal line (treble clef) and a lute line (bass clef). The lyrics are: Sumens illud a = ve peccatorum mi = se re = re =

à Purificat: usq; ad Pascha.

Handwritten musical notation for the third system, consisting of a vocal line (treble clef) and a lute line (bass clef). A large red initial 'A' is written at the beginning. The lyrics are: = = ve Regi = na cœ = lo = =

Handwritten musical notation for the fourth system, consisting of a vocal line (treble clef) and a lute line (bass clef). The lyrics are: = rum a = = = ve do = = mina ange = lo = =

Handwritten musical notation for the fifth system, consisting of a vocal line (treble clef) and a lute line (bass clef). The lyrics are: = rum Sal = = ve Radice salve porta ex qua =

Antiph: de B. à Purif: usq, ad Pascha.

mundo luxet or = ta gau = de virgo

glo = ri = o sa super em = nes Speci = o = sa

va = le o val = de de = co = ra et pro no = bis

Christum ex = o = = = ra

à Pascha usq, ad Fest: B. ma Trinit:

Regina coe = li la = ta =

Ant: de B. à Pascha usq ad F. s. hinc Trin:

Musical staff with notes and rests.

re alle - lu - ia quia.

Musical staff with notes and rests.

Musical staff with notes and rests.

quem me - m - i - si - por - ta - re

Musical staff with notes and rests.

Musical staff with notes and rests.

alle - lu - ia Resurre - xit

Musical staff with notes and rests.

Musical staff with notes and rests.

Sicut dixit alle - lu - ia ora pro no - bis

Musical staff with notes and rests.

Musical staff with notes and rests.

de - um alle - lu - ia

Musical staff with notes and rests.

Antiph: de B. à T. S. ^{ma} Trinitatis

60.

S

alve Regina Mater miseri = cordi = a

vita dulcedo et spes nostra sal = = ve . ad te cla =

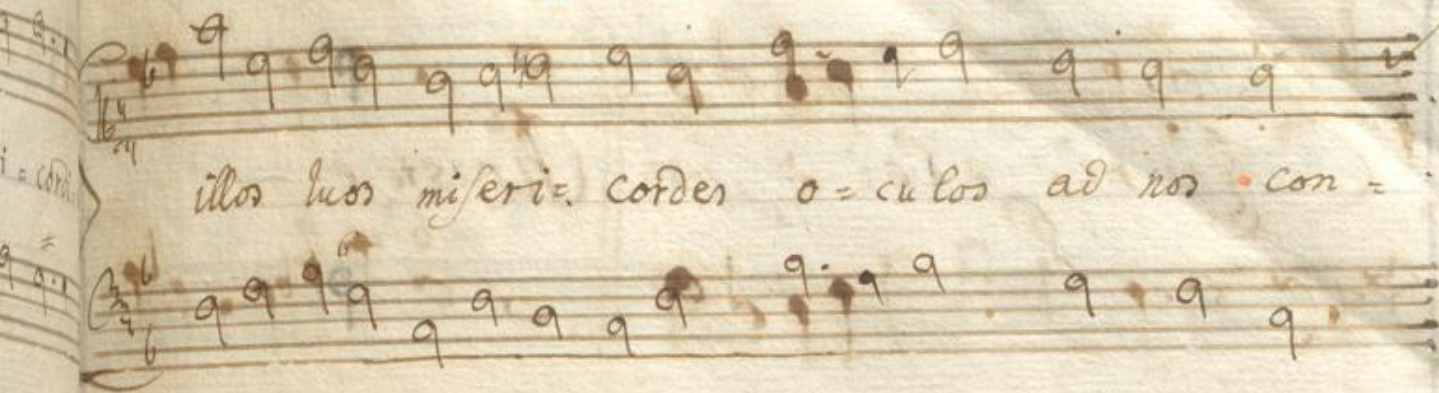
manus exules fi = li = i Eva ad te suspi =

ra = mus gementes et flen = tes in hac lacry = marum

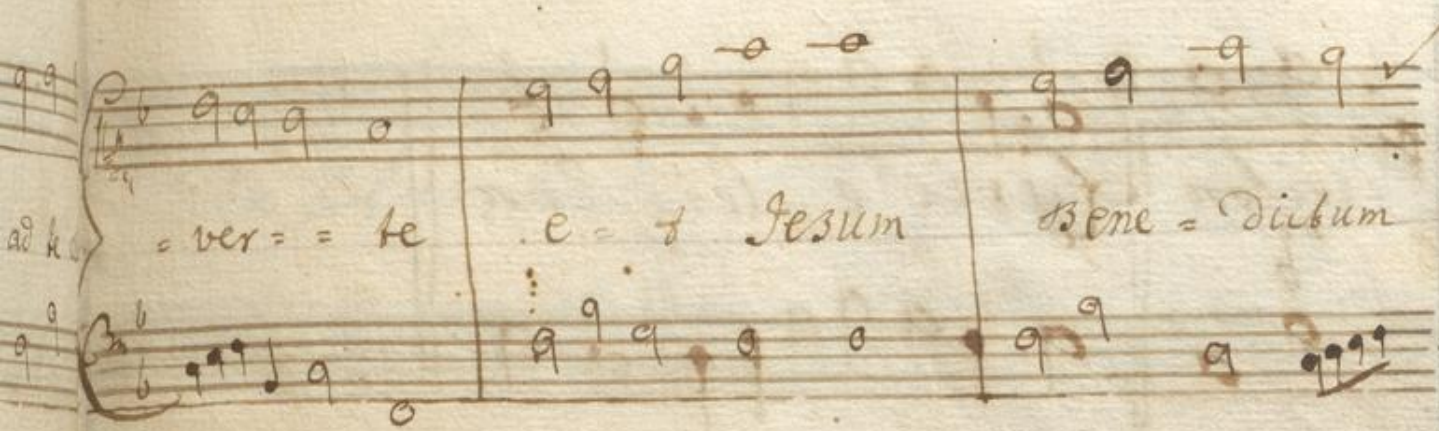
val = = le Eia ergo advo = cata nostra

usque ad. Adventum.

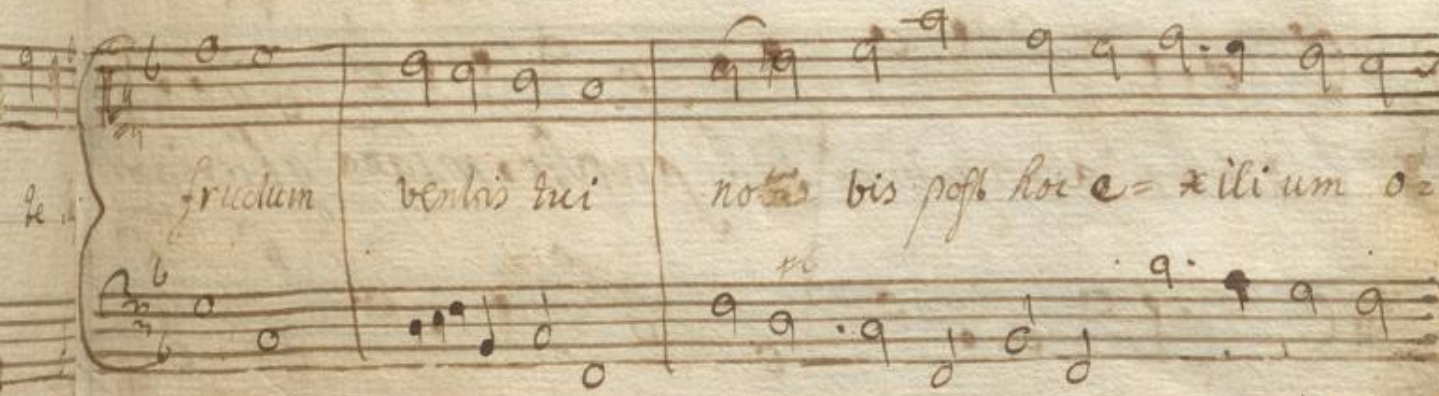
illis suis miseris cordes oculos ad nos con-



ver = te e = t Jesum bene = dictum



fructum ventris tui nota bis post hoc e = xili um o =



pende o cle = mens o pi = a o =



dulcis virgo Ma = ri = a



A. 2. Kyrie & Missa ad Lib.

Kyrie elei - son Christe e -

leison Kyrie e - lei - son.

G - rati as agimus Tibi propter magna gloriam

quam . Domine Fi - li u - ni - ge - ni - te

Je - su Chris - te . Qui tollis pec - ca - ta mundi

Sus - cipe deprecationem nostram. Quoniam

Tu solus Sanctus. Tu so - lus altissi -

mus Je - su Xte.

Al. F.
 Sanctus. Pleni sunt cae - li gloria

Tu - a o - sanna in excel - sis.

Agnus Dei qui tollis peccata mundi

The first system of handwritten musical notation consists of two staves. The upper staff is a vocal line in G major (one sharp) and common time (C), with lyrics written below it. The lower staff is a lute line in G major, with a treble clef and a 'C' time signature. The music is written in a cursive hand with various note values and rests.

miserere nobis

The second system of handwritten musical notation also consists of two staves. The upper staff is a vocal line with lyrics written below it. The lower staff is a lute line. The music continues from the first system. A dynamic marking 'f.' is visible below the lute staff. The system concludes with a double bar line.

The lower half of the page contains several systems of faint, mostly illegible handwritten musical notation. The notes and lines are very light and difficult to discern, suggesting they may be bleed-through from the reverse side of the page or very light ink.

LAMENTAT: IN HEBD. S.

Lament. I^{ma}.

I

Musical staff with notes and a treble clef.

ncipit lamentatio Jere mi = a

Musical staff with notes and a bass clef.

Musical staff with notes and a treble clef.

rophe = - ta . a = - lep̄h . Quo - modo sedet sola

Musical staff with notes and a bass clef.

Musical staff with notes and a treble clef.

civitas plena populo facta est quasi vidua - a Do - - mina

Musical staff with notes and a bass clef.

Musical staff with notes and a treble clef.

gen = ti = um Prin = ceps provincia = rum facta est sub tribu =

Musical staff with notes and a bass clef.

Musical staff with notes and a treble clef.

= ton . Be = - th . plo = - ransploravit in nocte

Musical staff with notes and a bass clef.

Lamentationes

74.

et lacryma eius in maxillis eius non est qui console-

=tur eam ex omnibus charis eius omnes amici eius

preverunt eam et facti sunt ei inimici.

gimel. migravit Judas propter afflictionem et multitudinem

servitutis habitavit inter gentes.

In Cena Domini

Musical staff with notes and a '60' time signature.

nec in ve = nil requi = em em = res perse culores eius

Musical staff with notes.

Musical staff with notes and a '60' time signature.

apprehenderunt eam inter angu = sti = as. da =

Musical staff with notes.

Musical staff with notes.

leth. vi = ce lion lugent eo quod non sit qui veni = at

Musical staff with notes.

Musical staff with notes and a '60' time signature.

ad so = lemni = ta = tem am = nes portae eius destruetur sacerdotes

Musical staff with notes.

Musical staff with notes and a '60' time signature.

eius gementes virgines eius squalidae et ipsae oppresse amari =

Musical staff with notes.

Lamentationes

6.

tu - di - ne . He - th . facti sunt hostes eius in capite

inimici eius occupabati sunt quia dominus locutus est . super eam propter

multitudinem iniquitatum eius parvuli eius dulcissimi in captivitatem ante

faciem tribulati - lis . Jeru - salem Jeru - salem

convertere ad dominum deum tu - um .

Tamentat: II. da

In Cæna Domini.

77.

V

va = = u . eb . egressa et

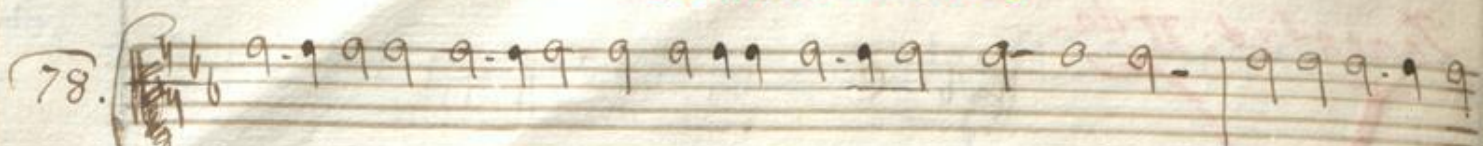
a filia lion omnis de = cor eius fac = ti sunt principes eius


velut arie = tes non inveni = entes pascuam et a = bierunt abque

fortitudine ante faciem subse = guen = = tis. za = = ph.

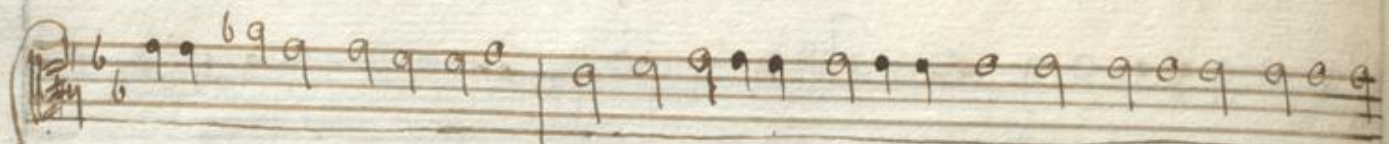
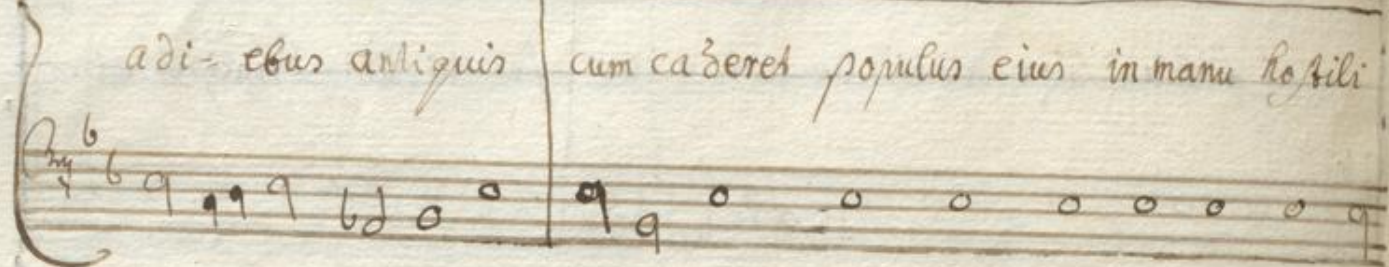
re = cordata est Ierusalem dierum afflixi = omis suae et provari =

Lamentationes

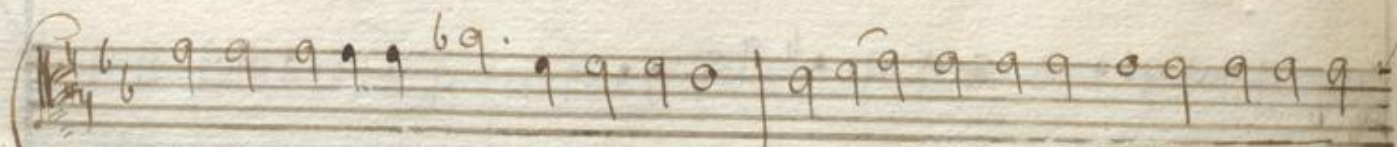
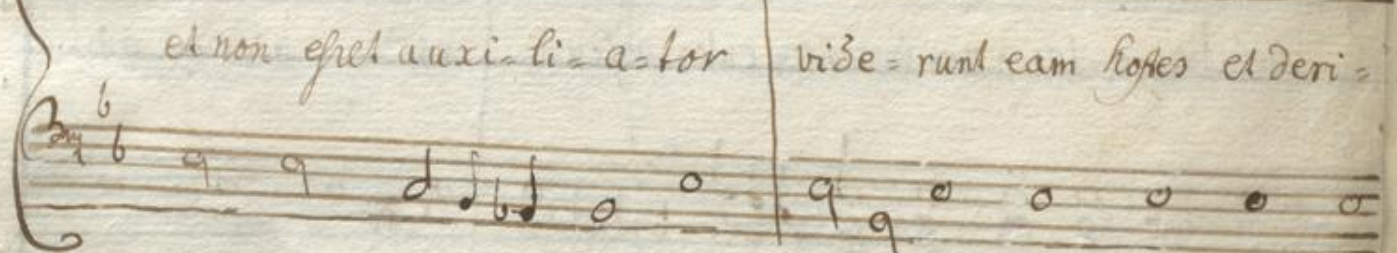
78.  *- cati- oris omnium desidera- bilium suo- rum qua habuerat*



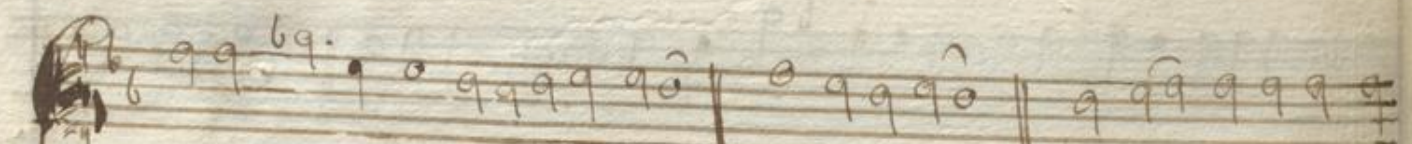
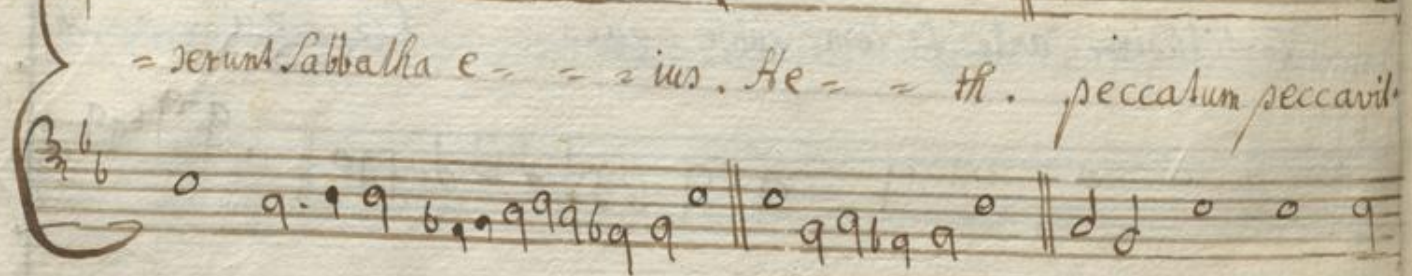
adi- ebus antiquis cum ca-deret populus eius in manu hostili

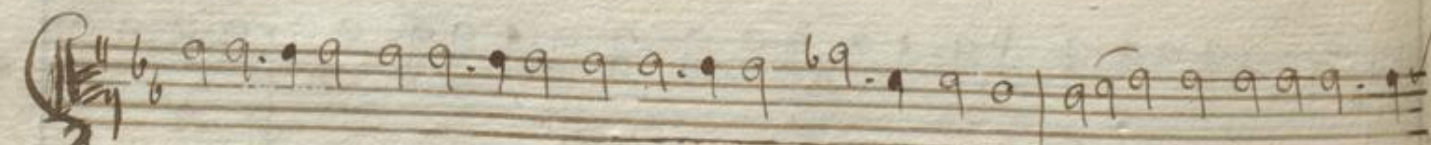

et non erit auxi- li- a- tor vide- runt eam hostes et deri-

- serunt. Sabbatha e- - - ius. He- - - th. peccatum peccavit.

Jerusalem propterea instabilis facta est om- nes qui glori- fi-

In Cena Domini.

Musical staff with notes and clef.

cabant eam ~~ne~~verunt eam Lucia viderunt ignominiam

Musical staff with notes and clef.

Musical staff with notes and clef.

eius ihs aulem gemens conversa est rehor = = = sum

Musical staff with notes and clef.

Musical staff with notes and clef.

Te = th. Sores eius in pedibus eius nec recordatus est

Musical staff with notes and clef.

III

Musical staff with notes and clef.

finis su = i de po = sita est vehementer non habens conso =

Musical staff with notes and clef.

Musical staff with notes and clef.

= calore m vide domine afflictio = onem meam Evoniam

Musical staff with notes and clef.

Lamentationes.

80

ereclus est ierusalem. Ierusalem

Ierusalem convertere ad Dominum Deum

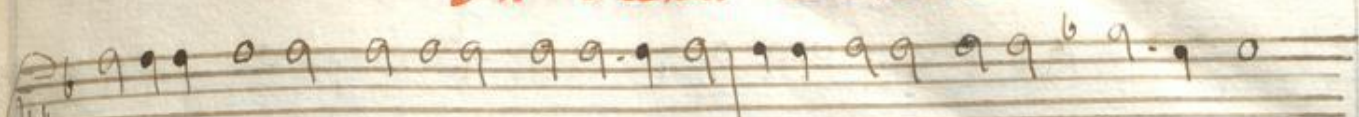
tuum.

Lamentatio III. tia.

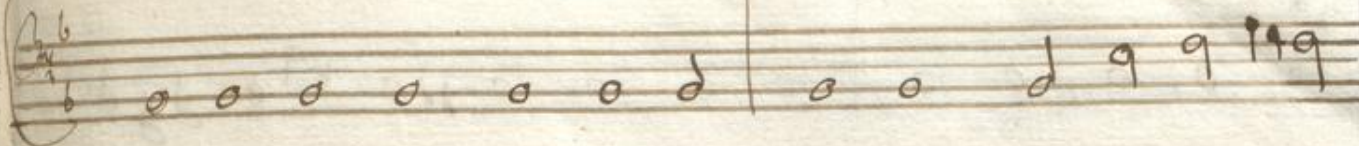
J Dominus d. manum suam misit super ad-

desiderabilia eius. Quia vidit gentes ingressas in sanctu-

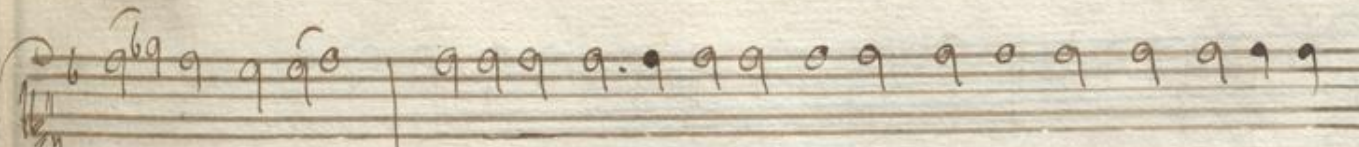
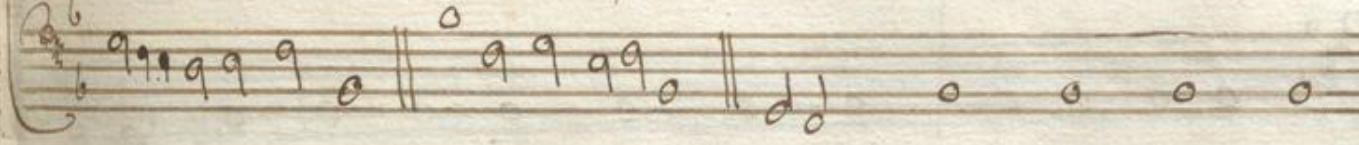
In Cena Domini.



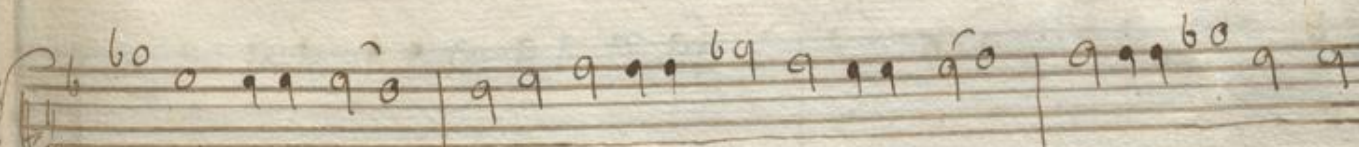
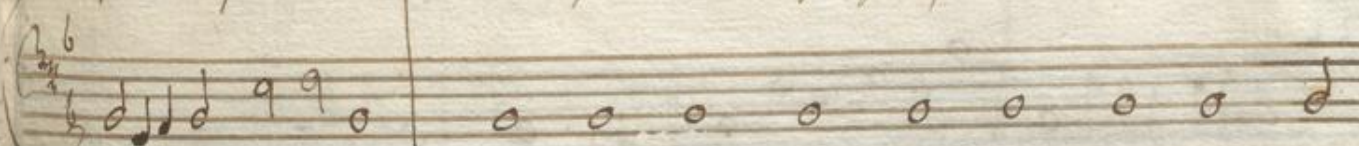
arium suum de quibus proceperas ne in-harent in Ec-clesiam



tu-am . Ca-pit . omnis populus eius gemens et



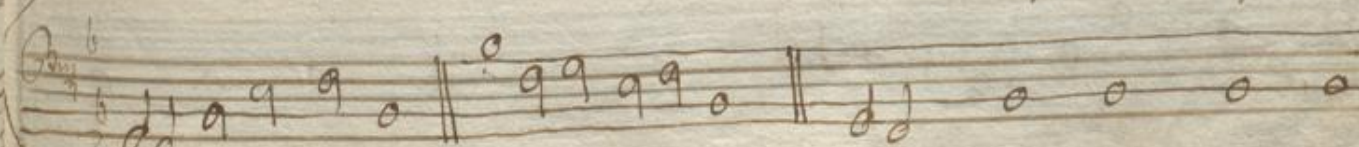
quarens panem dederunt peli-osa quoque pro cibo ad refocil-



landam ani-mam vide Domine et confide-ra quoniam facta sum



vi-lis . la-med . o vos omnes qui transitis per viam



Lamentationes

82. attendite et videte sicut dolor sicut dolor meus Quoniam

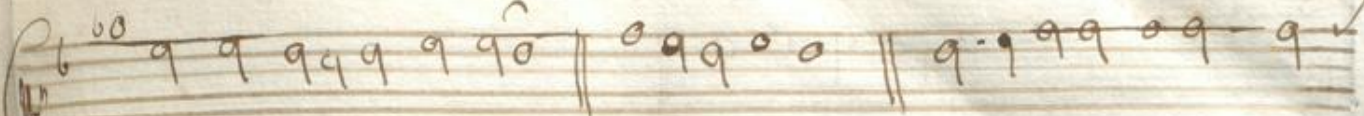
vindemiat me ut locutus est dominus in die ire furoris

furoris. Memorem de excelso misit ignem in orbibus

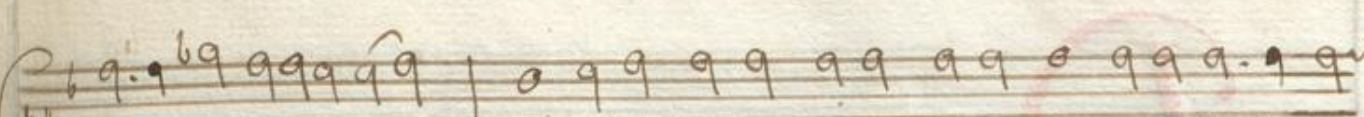
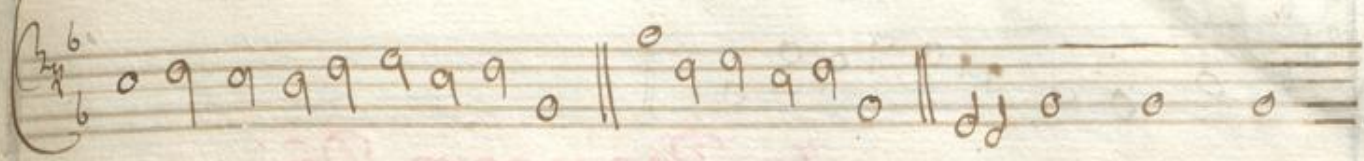
meis et erudit me expandit ~~rota~~ pedibus meis convertit

me retrorsum posuit me desolatam rota die me

In Cena Domini.



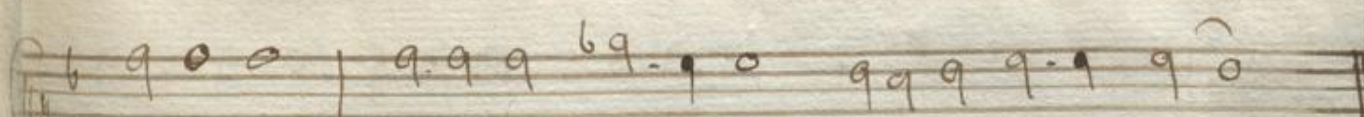
rote confec = tam. Nu = n. vigi = lavit jugum i =



iquitalum mearum in manu eius convolutae sunt et impositae



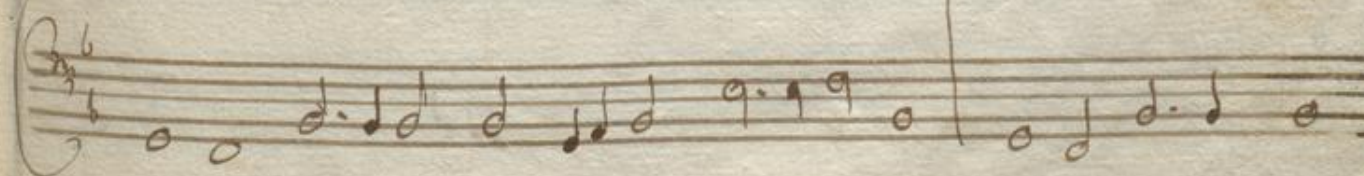
collo meo infirmata est virtus mea redit me dominus



in manum de qua non pote = ro Sur = = ge = re .



Jeru = = salem Jeru = = sa lem conver = tere ad



Lamentationes

84

Dominum Deum tu = = = um .

In Parasceve Dñi

D

e la - mentati - one Jere - mia

propheta . He - = th . cogitavit Dominus dissipare

munum filia Sion tetendit funiculum suum et

non avertit manum suam aper = titi = = o = re

In Parasceve Dñi

Musical notation for the first system, including a treble clef, a key signature of one flat, and a 4/4 time signature. The notes are: G4, A4, Bb4, C5, D5, E5, F5, G5, A5, Bb5, C6, D6, E6, F6, G6.

= mis o = culi me = i conturbata sunt viscera me =

Musical notation for the second system, including a bass clef and a 4/4 time signature. The notes are: G3, A3, Bb3, C4, D4, E4, F4, G4, A4, Bb4, C5, D5, E5, F5, G5.

Musical notation for the third system, including a treble clef, a key signature of one flat, and a 4/4 time signature. The notes are: G4, A4, Bb4, C5, D5, E5, F5, G5, A5, Bb5, C6, D6, E6, F6, G6.

= a effu = sum est in terra jecur meum super con =

Musical notation for the fourth system, including a bass clef and a 4/4 time signature. The notes are: G3, A3, Bb3, C4, D4, E4, F4, G4, A4, Bb4, C5, D5, E5, F5, G5.

Musical notation for the fifth system, including a treble clef, a key signature of one flat, and a 4/4 time signature. The notes are: G4, A4, Bb4, C5, D5, E5, F5, G5, A5, Bb5, C6, D6, E6, F6, G6.

= triti = one filia populi me = i cum de ficeret

Musical notation for the sixth system, including a bass clef and a 4/4 time signature. The notes are: G3, A3, Bb3, C4, D4, E4, F4, G4, A4, Bb4, C5, D5, E5, F5, G5.

Musical notation for the seventh system, including a treble clef, a key signature of one flat, and a 4/4 time signature. The notes are: G4, A4, Bb4, C5, D5, E5, F5, G5, A5, Bb5, C6, D6, E6, F6, G6.

parvulus et lactens impla = te = is app = = i =


Musical notation for the eighth system, including a bass clef and a 4/4 time signature. The notes are: G3, A3, Bb3, C4, D4, E4, F4, G4, A4, Bb4, C5, D5, E5, F5, G5.

Musical notation for the ninth system, including a treble clef, a key signature of one flat, and a 4/4 time signature. The notes are: G4, A4, Bb4, C5, D5, E5, F5, G5, A5, Bb5, C6, D6, E6, F6, G6.


= di . Je ru = salem Jeru = = sa = lem

Musical notation for the tenth system, including a bass clef and a 4/4 time signature. The notes are: G3, A3, Bb3, C4, D4, E4, F4, G4, A4, Bb4, C5, D5, E5, F5, G5.

Lamentationes

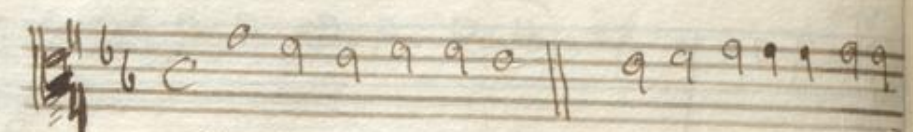
88. 

convertere ad dominum deum tuum.

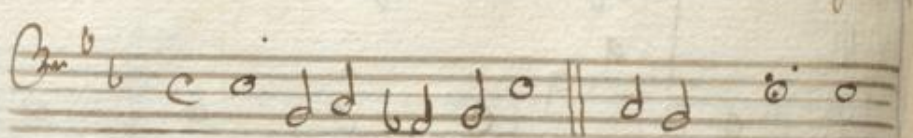
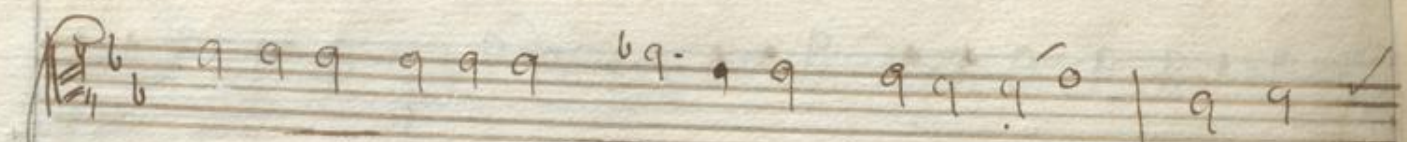


Lamentatio II. da.

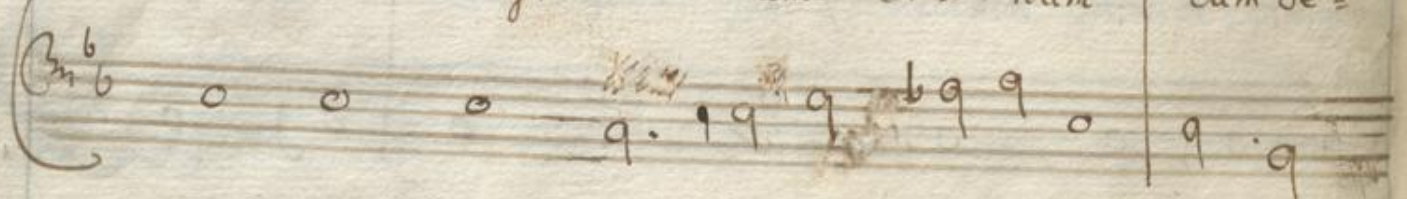

L



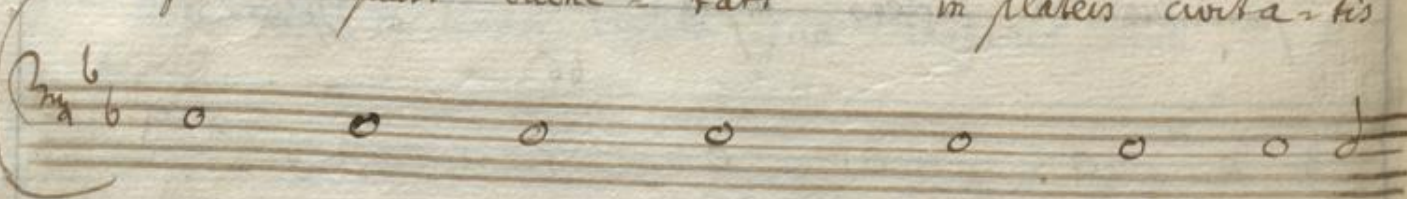
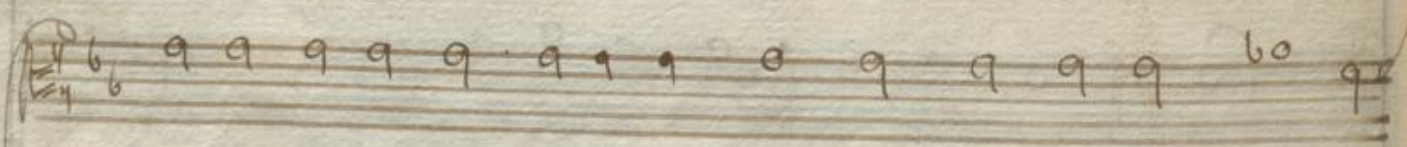
La = = med. ma = tribus suis

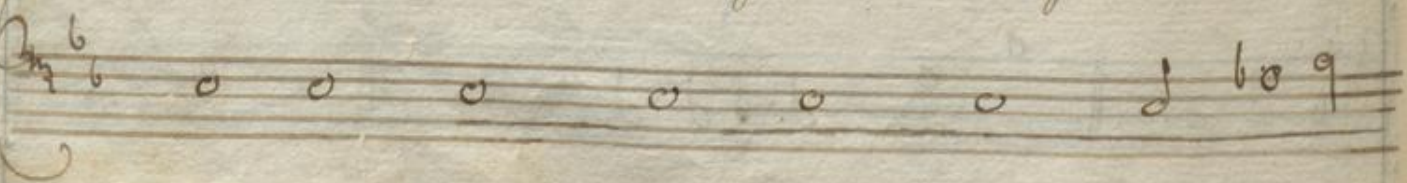
Dixerunt ubi est triticum et vinum cum de =

ficerent quasi vulnerati in plateis civitatis

et exhaerent animas suas in finu matrum



In Parasceve Dñi

Musical notation for the first system, featuring a treble clef and a key signature of two flats.

Sua = = rum Me = = m . cui com =

Musical notation for the second system, featuring a bass clef and a key signature of two flats.

Musical notation for the third system, featuring a treble clef and a key signature of two flats.

parabo te vel cui assimi = labo te fili = a

Musical notation for the fourth system, featuring a bass clef and a key signature of two flats.

Musical notation for the fifth system, featuring a treble clef and a key signature of two flats.

Jerusa = lem cui exo = guabo te et consolabor

Musical notation for the sixth system, featuring a bass clef and a key signature of two flats.

Musical notation for the seventh system, featuring a treble clef and a key signature of two flats.

te virgo fi = li = a Si = on magna est enim

Musical notation for the eighth system, featuring a bass clef and a key signature of two flats.

Musical notation for the ninth system, featuring a treble clef and a key signature of two flats.

velut mare contri = = tio In = a quis medebitur

Musical notation for the tenth system, featuring a bass clef and a key signature of two flats.

Lamentationes

90.

Lu- i. Nu- n. propheta tui

viderunt tibi falsa et sul- ta nec a se- ri- ebant

ini- quitatem tuam ut se ad poeni- tentiam

provoca- rent vide- runt autem tibi assumpti-

- ones et e- iecti- o- nes. Sa-

In Parasceve Dñi

91.

Musical staff with notes and rests.

= mech. plause runt super le manibus omnes transeuntes

Musical staff with notes and rests.

Musical staff with notes and rests.

per viam sibilaverunt et moverunt capita sua super filiam

Musical staff with notes and rests.

Musical staff with notes and rests.

Jerusa-lem hac = cire epi uobis dicentes perfecti de co = ris

Musical staff with notes and rests.

Musical staff with notes and rests.

gaudium uni = vesce ter = = ra . Ter = rusalem Teru = sa =

Musical staff with notes and rests.

Musical staff with notes and rests.

= lem convertere ad dominum deum lu = = um .

Musical staff with notes and rests.

Lament: III. *lia*

Lamentationes

A

a = = Gerh. ego vir videns

pauperta - tem me - am in virga indig - nati - o - nis

e - = = ius - = = Gerh. me mi -

= nam et ad - duxit in lene - bras et non in

lu - = = cem - . a = = Gerh. lan - = hum

In Parasceve Dñi.

Handwritten musical notation on a five-line staff, featuring various note values and rests.

in me ver-tit et convertit manum suam so-fa

Handwritten musical notation on a five-line staff, including a red ink correction or mark.

Handwritten musical notation on a five-line staff.

di-e . Be-th . velutam fecit

Handwritten musical notation on a five-line staff.

Handwritten musical notation on a five-line staff.

pedem meam et calcem meam contrivit gsa

Handwritten musical notation on a five-line staff.

Handwritten musical notation on a five-line staff.

me-a . Be-th . adificavit in

Handwritten musical notation on a five-line staff.

Handwritten musical notation on a five-line staff.

gyro meo et circumdedit me felle et la-bo-

Handwritten musical notation on a five-line staff.

Lamentationes

94.

Musical staff with notes and rests.

= re . Be = = h . in te = nebris col = lo cavit

Musical staff with notes and rests.

Musical staff with notes and rests.

me quasi mortuos sempi = ter = = nos

Musical staff with notes and rests.

Musical staff with notes and rests.

ghi = mel . circum aedi = cavit adversum me

Musical staff with notes and rests.

Musical staff with notes and rests.

ut non e gredi = ar aggra = vant compe = tem

Musical staff with notes and rests.

Musical staff with notes and rests.

me = um ghi = mel . sed et cum

Musical staff with notes and rests.

In Parasceve Dñi.

95.

Musical notation for the first system, featuring a treble clef, a key signature of one flat, and a 4/4 time signature. The notes are mostly quarter and eighth notes.

clamavero et ro-gave-ro exclusit ora-ti-

Musical notation for the second system, featuring a bass clef and a key signature of one flat. The notes are mostly quarter and eighth notes.

Musical notation for the third system, featuring a treble clef and a key signature of one flat. The notes are mostly quarter and eighth notes.

-onem me-am. ghy-mel. conclu-sit

Musical notation for the fourth system, featuring a bass clef and a key signature of one flat. The notes are mostly quarter and eighth notes.

Musical notation for the fifth system, featuring a treble clef and a key signature of one flat. The notes are mostly quarter and eighth notes.

vias me-as lapidi-bus quadris. Semitas meas subver-

Musical notation for the sixth system, featuring a bass clef and a key signature of one flat. The notes are mostly quarter and eighth notes.

Musical notation for the seventh system, featuring a treble clef and a key signature of one flat. The notes are mostly quarter and eighth notes.

-tit. Jeru-salem Jeru-salem convertere

Musical notation for the eighth system, featuring a bass clef and a key signature of one flat. The notes are mostly quarter and eighth notes.

Musical notation for the ninth system, featuring a treble clef and a key signature of one flat. The notes are mostly quarter and eighth notes.

ad Dominum Deum lu-cum.

Musical notation for the tenth system, featuring a bass clef and a key signature of one flat. The notes are mostly quarter and eighth notes.

96.

Lamentat: I. ma

Lamentationes

D

De la-mentati-o-ne Je-re-

-mia prophe-ta. Be-th.

mise-ri-cordie domini quia non sumus con-

-sumpti quia non defecerunt mise-rati-o-nos

e-ius He-

In Sabbatho Sancto.

no = vi di lucu - lo multa est fi = des

lu = a. He = th. pars me = a

dominus dixit anima me = a propter re = a expe =

tabo e = um. Te = th. Bo =

rus est dominus speranti = bus in e = um

Lamentationes

98

anima querenti il - lum . Te - th

Bo - num est proolari cum si lenti - o salu -

- tare de - i . Te - th

Bo - num est vi - ro cum portaverit iugum ab a -

- dolenti - a lu - a . So - d

In Sabbatho Sancto.

(99)

Musical staff with notes and rests.

Sede = bit solita = rius et face = bit quia

Musical staff with notes and rests.

Musical staff with notes and rests.

levabit Syres = se . Io = = d . po . net

Musical staff with notes and rests.

Musical staff with notes and rests.

in pulvere os fu = um si forte sit spes: Io = = d .

Musical staff with notes and rests.

Musical staff with notes and rests.

da = bit percutienti se maxillam salu = ra = bitur pro = = tri =

Musical staff with notes and rests.

Musical staff with notes and rests.

is . Jeru = salem Jeru = = salem converte ad dominu deum lu = - um .

Musical staff with notes and rests.

100.

Lament: II. da

Lamentationes

A

a = = leph. Eus = modo

obscuratum est aurum muta = tus est color giti = mus ?

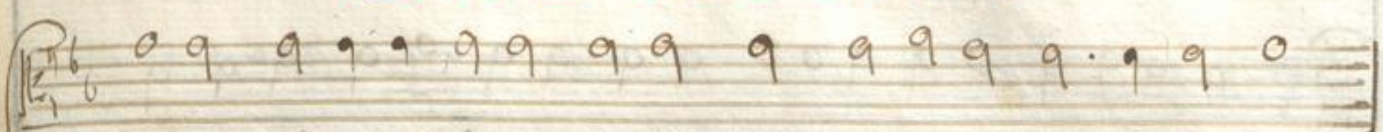
disper = si sunt lapides Sardu = ari = i in capite omnium

platea = = = rum. Be = = = th

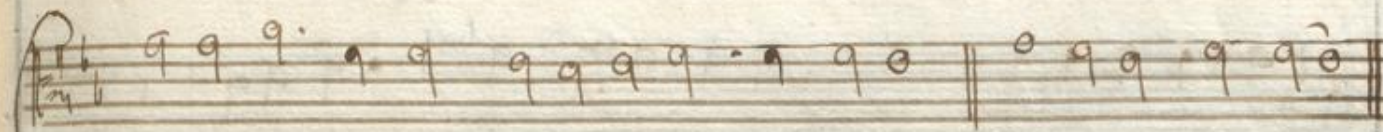
fi = li = i lion incliti et amici auro

In Sabbatho Sancto.

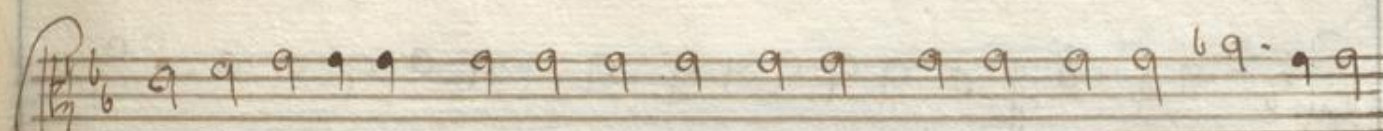
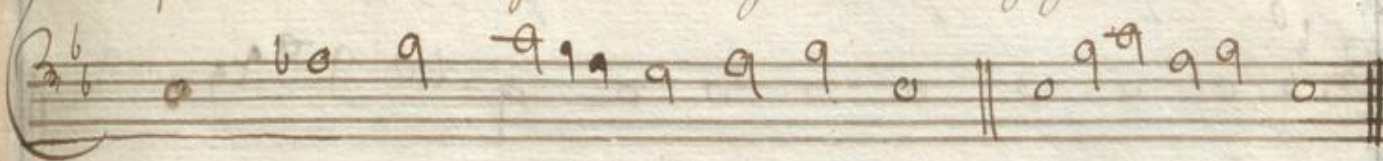
101.



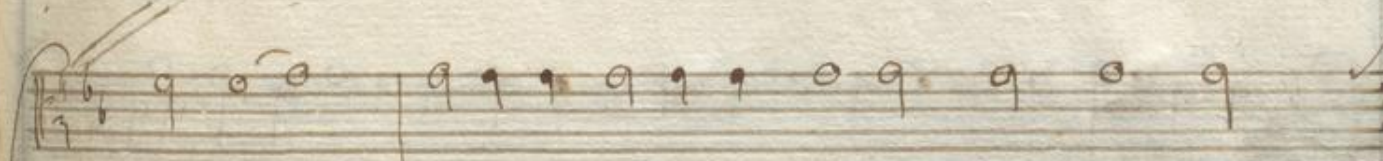
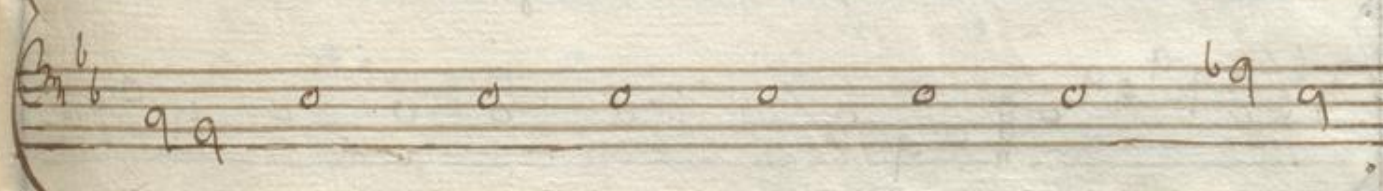
primo quomodo rege- tati sunt in vasa teste- a



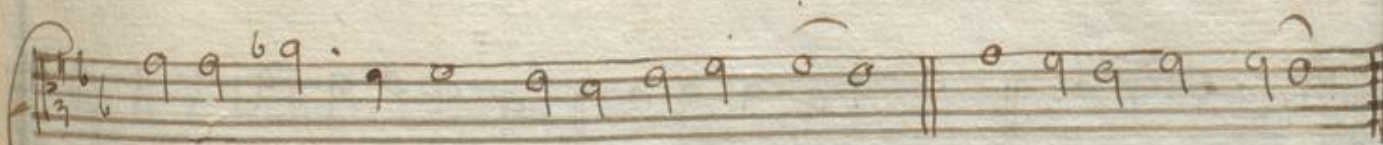
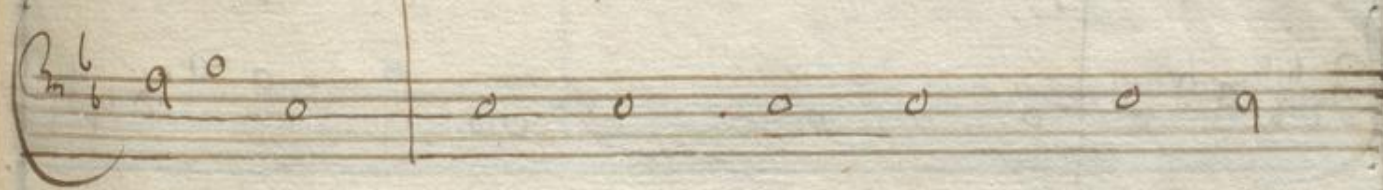
opus manuum fi- = gu- li . ghy- = mel.



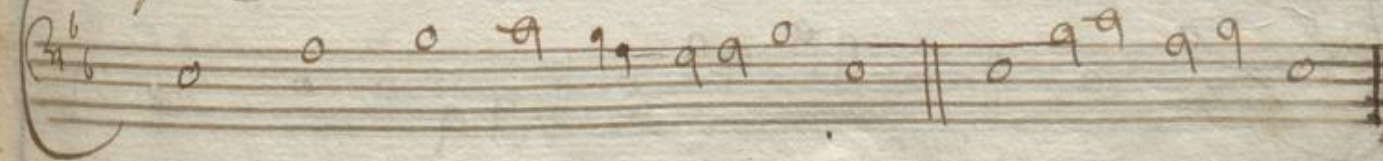
Sed et lamia nuda- verunt mamam lacta verunt catulos



Su- os filia squuli mei crude- lis



quasi struthio in deser- to . da- = leth.



Lamentationes

102.

adhae = sit lingua tacentis ad pa: latum eius in si = ti

panuli peti = erunt panem et non erat qui frangeret e = = is.

He = = th: qui vescebantur volutu a se interi = erunt.

in vis qui nutriebantur in croceis amplexati sunt ter =

= cora . va = = u . et ma = ior efecta et

In Sabbatho Sancto.

iniquitas filia populi mei peccato Sodomorum

qua subversa est in momento et non cogere runt in

ea ma - nus . Jeru - sa lem Je -

- ru - salem conuertere ad dominum deum

Iu - dae - um .

104.

Lamentationes
Lament: III^{ia}

I

In = ci = pit oratio Iere.

in = mia pro = phe = ta re = cordare Domine

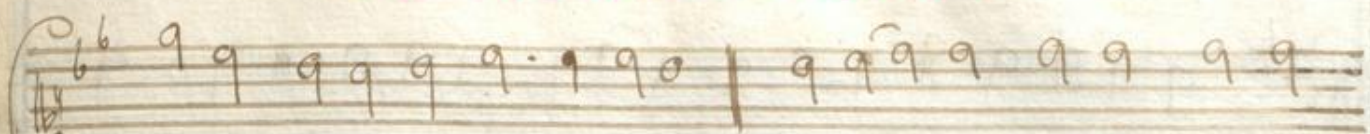
quid acciderit no = bis intue = re et respice op =

pro = brium nos = tum ha = reditas nostra

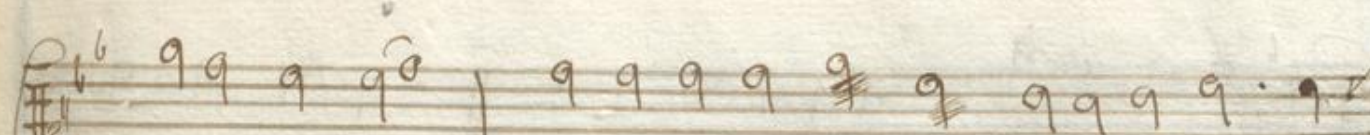
versa est ad ali = e = nos domus nostra

In Sabbatho Sancto.

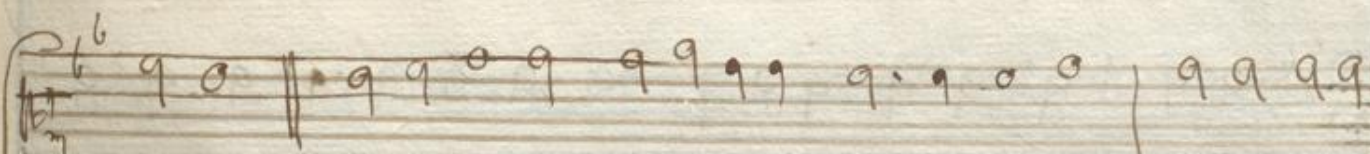
105.



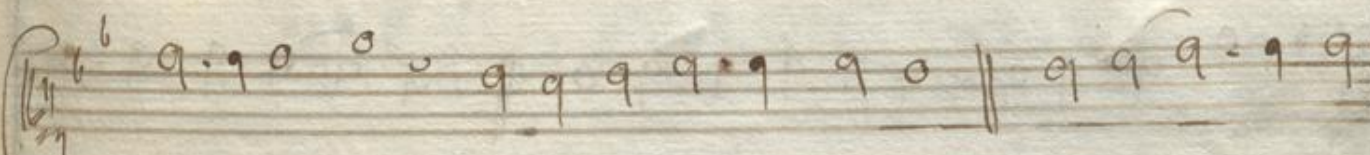
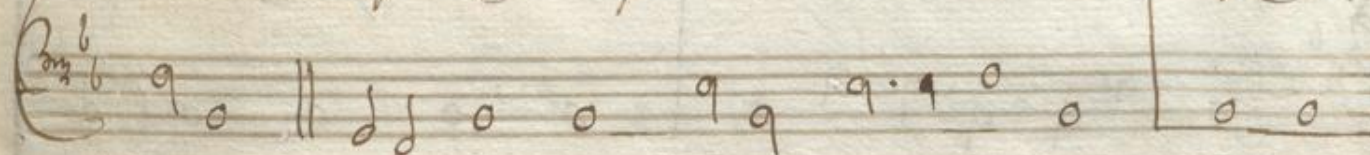
ad extra = = reos . pupil = li facti Sumus



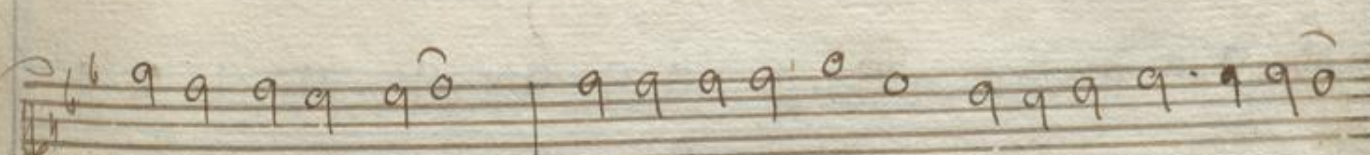
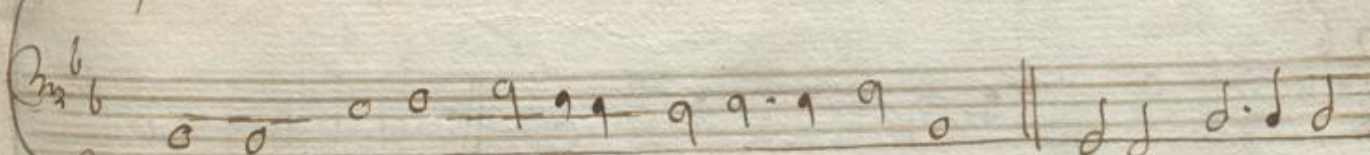
absque patre matres nostra quasi vi = = du =



= a . . aquam nostram pecunia bibi = mus ligna nostra



pretio compara = = vi = mus . . cervi = cibus



mina = ba = mur lapsis non dabatur re = = quies .



Lamentationes

106.

agyp= to dedimus manum et asyri= is ut

Salu= ra= remur pa= = = ne . patres nostri

peccaverunt et non sunt et nos i= niqui= later e=

= orum porta = = vi= mus . Jera= vi Domi=

= nati sunt nostri non fuit qui se di= meret

In Sabbatho Sancto.

De manu eo- - - rum . in a- nimabus nostris afe- - re .

= bamus panem nobis a fauce gladii in deser- - to .

pe- llis nostra quasi clibanus exusta est a fauce lempstahum fa- -

= mis . muli- - eres in sion humili a- - ve- - runt et virgines in civitati-

= bus Ju- - da . Jeru- - salem Jeru- - salem convertere ad dominum deum tuum .

Psalmus Miserere

108.

M

Miserere mei Deus secundum magnam

miseri-cordiam tuam. et secundum multitudinem miserationum

iniquitatem meam.

amplius amplius lava me ab iniquitate mea et

a peccato meo munda munda me

In Matutinis Tenebrarum.

Quoniam iniquitatem meam ego cognosco et peccatum meum contra

me est semper. tibi soli peccavi et malum coram te feci

ut iustificeris in sermonibus tuis et vincas cum iudicaris

Eue enim in iniquitatibus conceptus sum

Sum et in peccatis concepit me Mater mea.

Psalms Misereatur.

110.

eue enim veri latem dile xisti inceda et ouera Sri-

= entia tua manifesta = Si mihi . affert me hygroo amur-

= dabor lavabis me et Syer nivem de alba = bor

auditiui meo dabis gaudium et tibi = ti =

= am et exultabunt oia humili = a = ta

In Matutinis Tenebrarum.

iii.

aversa faciem tuam a peccatis meis et omnes iniquitates

me = as dele. cor mundum crea in me deus et spiritum rectum

in nova in visceribus meis.

reproicias me a facie tua et

Spiritum Sanctum humane ne auferas a me

Psalmus Miserere

112.

redde mihi letitiam salutaris tui et spiritu princi-

-pali cor firma me : docebo iniquos vias tuas et impij

ad te converten- tur.

libera me de san- guinibus deus deus sa- lutis me-

ae et exultavit lingua mea in- spiritum tuam

In Matutinis Tenebrarum.

113

Domine labia mea aperiens et os meum annuntiabit.

laudem tuam. quoniam si voluisses sacrificium dedissem

ulique holocaustis non delectaberis.

Sacrificium deo spiritus contribulatus

cor contritum et humilatum deus non despicies.

Psalmi Miserere in Matut: Tenebr:

iii4.

Benigne fac domine in bona voluntate tua sion

ut adifi=centur mu=ri Je=rusalem. hinc auer=

=tabis sacrificium iustitia oblationes et holo=

= causa hinc imponent super altare tuum

vi=lu=lon=

St. i. Missa pro Festis Solemnioribus.

Handwritten musical notation for the first system. The vocal line (treble clef) contains the lyrics "Kyrie elei - son elei - son elei -". The lute line (bass clef) contains rhythmic notation with various accidentals. A "115" is written in the right margin.

Handwritten musical notation for the second system. The vocal line contains the lyrics "son Christe eleison elei - son Kyrie". The lute line continues with rhythmic notation.

Handwritten musical notation for the third system. The vocal line contains the lyrics "e - leison elei - son elei - son". The lute line continues with rhythmic notation.

Handwritten musical notation for the fourth system. The vocal line contains the lyrics "ras agimus tibi propter magnam gloriam tuam Domine". The lute line continues with rhythmic notation.

Handwritten musical notation for the fifth system. The vocal line contains the lyrics "fili unigenite se - su xte. Qui tollis pec -". The lute line continues with rhythmic notation.

Sequentia in Festo **X^{ris}** Christi

Lauda sion salvatorem lauda ducem et passio sem in hym

nis et canticis

Laudis thema specia

lis panis vivus

et vitalis ho die proponitur

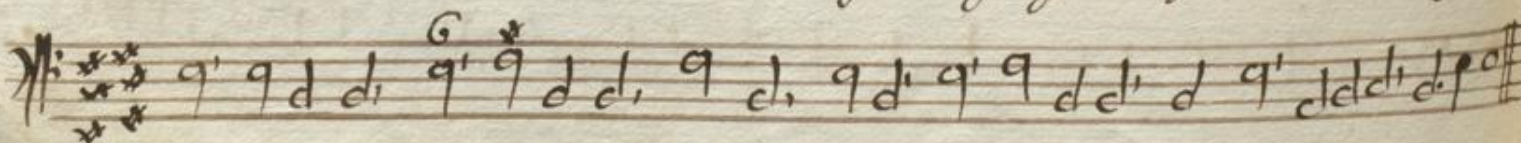
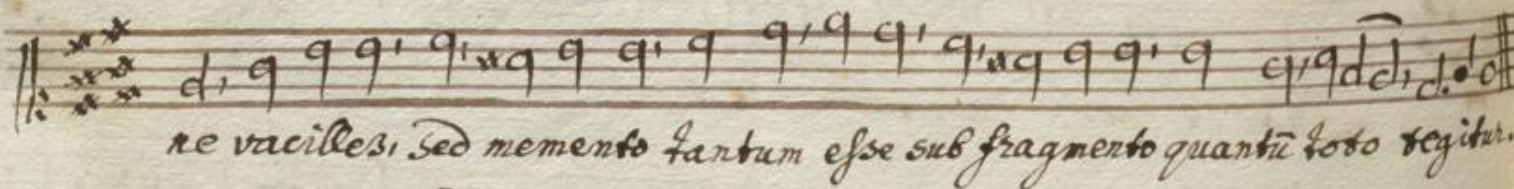
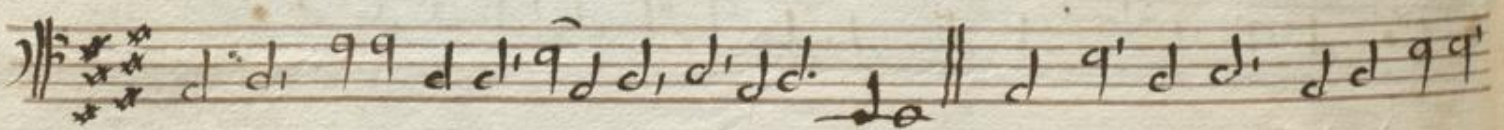
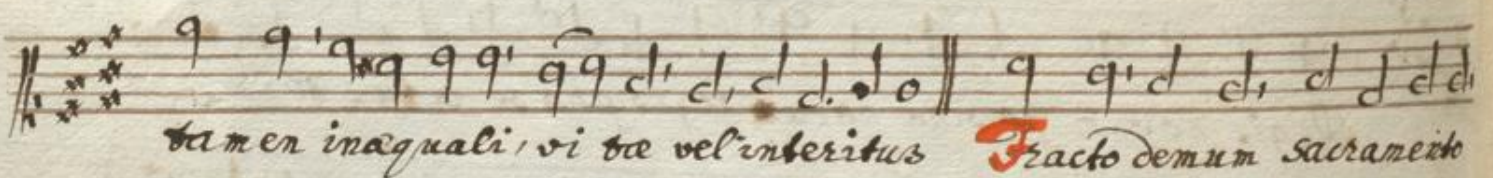
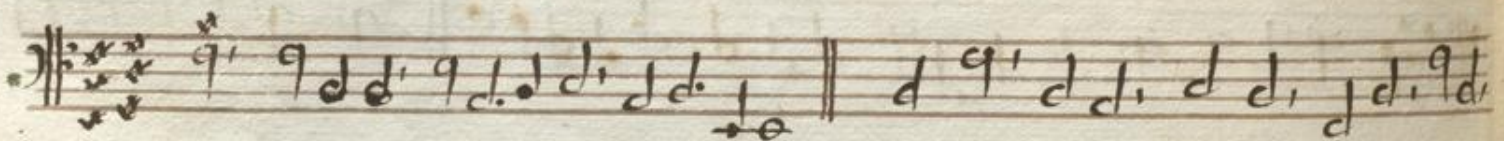
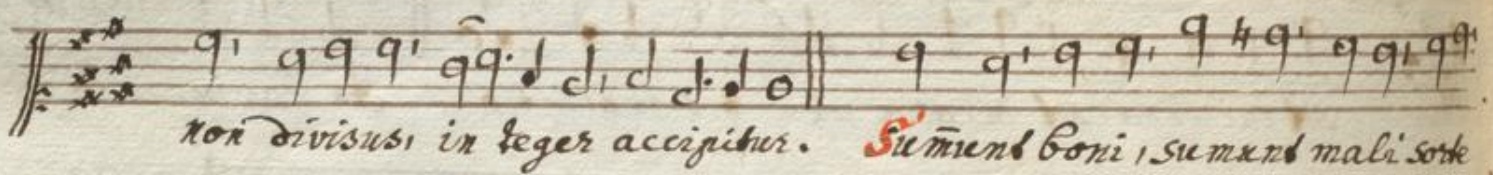
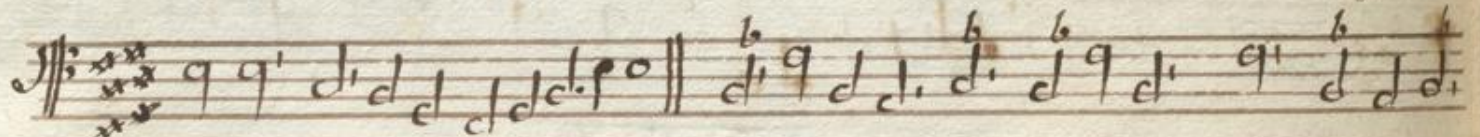
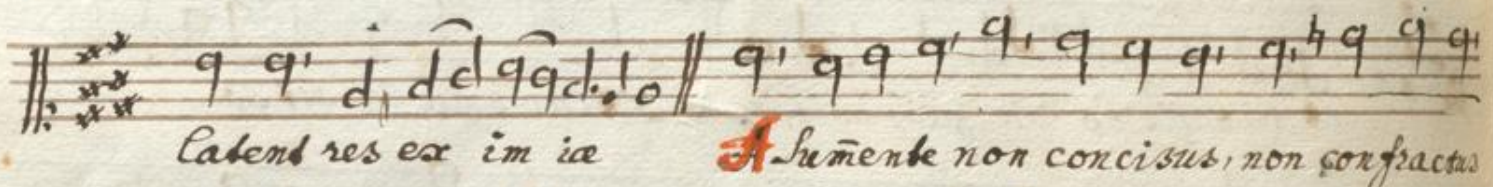
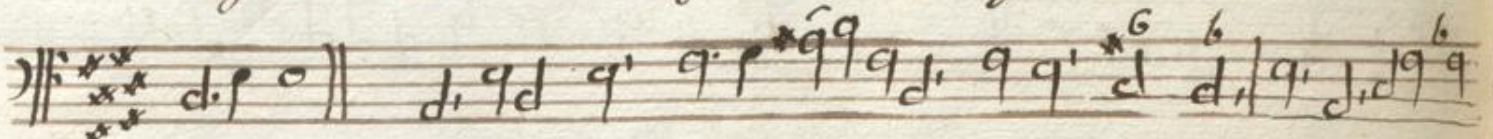
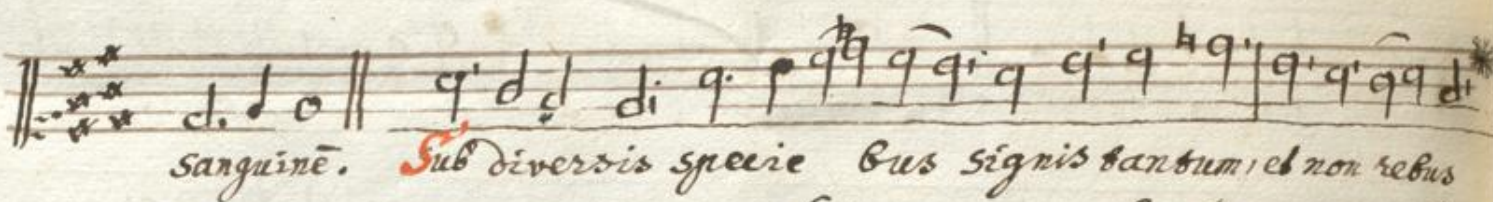
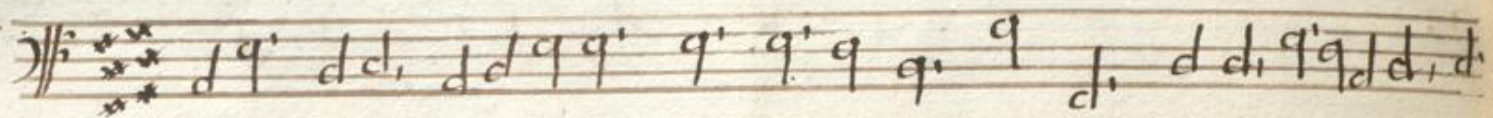
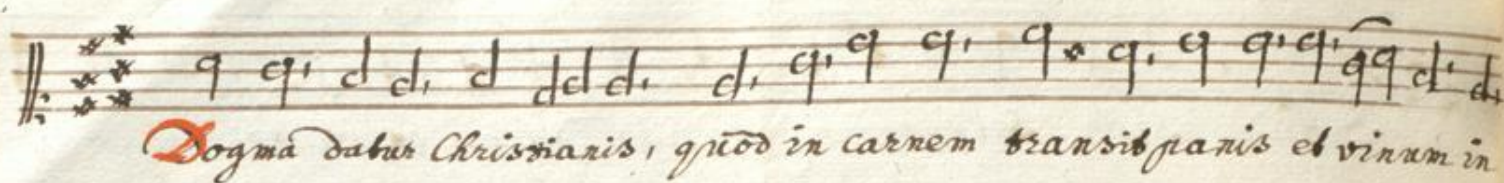
Sis laus plena sis so nora

sis iucunda, sis decora men sis iubilatio

In hac mensa no vi

Regis novum pascha novum legis pha se vetus terminat

Quod in coena Christus gessit, faciendum hoc expressit in sui memoria

Sequentia in Festo X^{mo} Christi.

Et per Octavam.

Musical staff with notes and clef.

Ecce paris Angelorum factus cibus viatorum, vere paris fili-

Musical staff with notes and clef.

Musical staff with notes and clef.

orum non mittendus canibus In figuris praesignatur,

Musical staff with notes and clef.

Musical staff with notes and clef.

cum Isaac imolatur, agnus Paschae deputatur, datur manna

Musical staff with notes and clef.

Musical staff with notes and clef.

Patribus Tu qui cuncta sis et vales, qui nos pascis hic

Musical staff with notes and clef.

Musical staff with notes and clef.

mortales, tuos ibi comensales, cohæredes et sodales fac sanctorum

Musical staff with notes and clef.


Musical staff with notes and clef.

civium Amen Alleluia

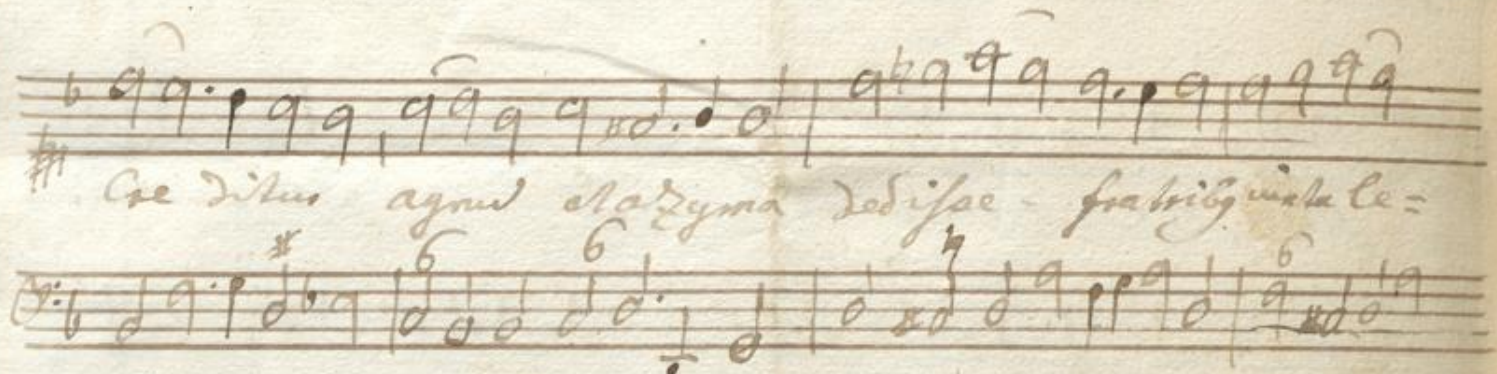
Musical staff with notes and clef.

20 In Festo Corporis Christi et per octavas singulis diebus
post Completorium.

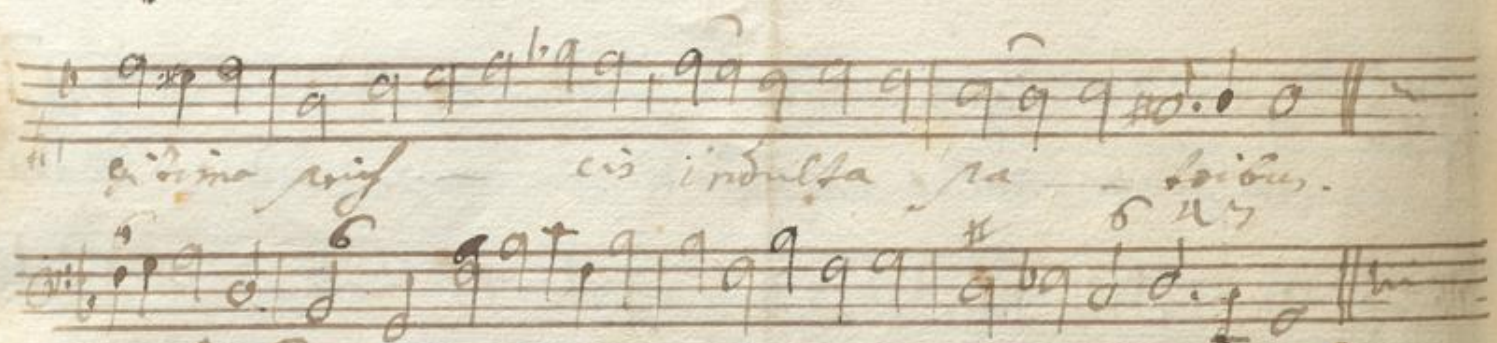
Molti si reco - litus. Cena novissima, quatuor -



Credidit agnus et agnoscere - fratribus, in la -

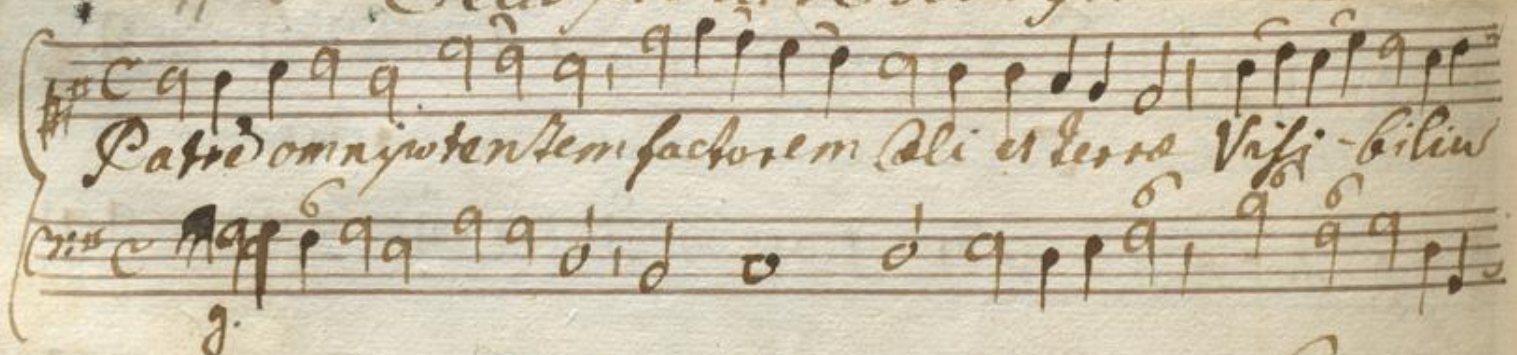


et in omni - bus - cis indulta pa - loibus.

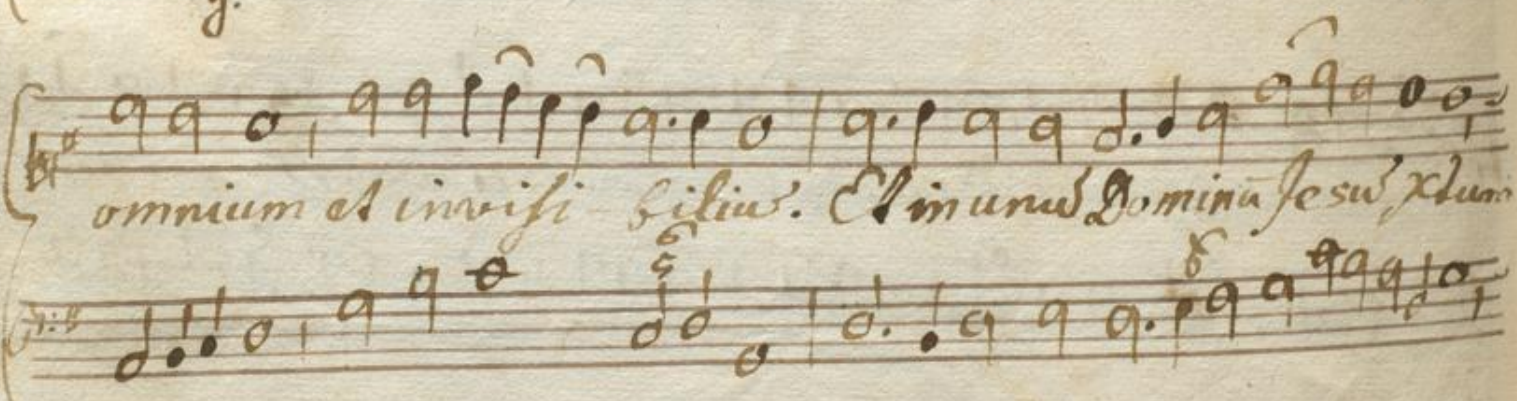


H. C. Credo pro diversis Festivitatibus.

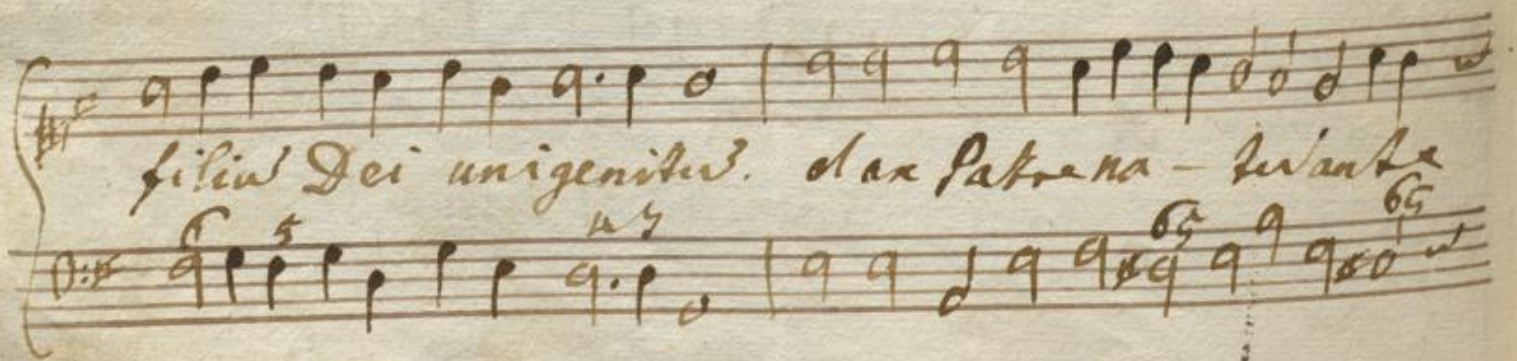
Patri omnipotentem factorem celi et terrae visi - bilium



omnium et invi - sibilium. Et in unum Dominum Jesum Christum



filius Dei unigenitus. et ex Patre na - tus ante



omnia secula Deus de Deo lapsus de lumine Deus uerus de

Deo uero genitus non factus consubstantialis Patri per

que omnia facit - laus qui propter nos homines et propter nos-

tram salutem descendit de Caelis. Et incarnatus est de spiri-

tu sancto ex mari - a Virgine et homo factus

est. a - - - - - men a - - - - - men.

Handwritten musical notation on aged paper, featuring multiple staves with notes and some faint text. The page shows signs of wear, including stains and discoloration.

Partial view of the adjacent page, showing musical notation and some text, including the word "Loni".

Gloria II. T. C.

Vel alio quocunque

#. 4.

C. F.

Gratias agimus tibi propter magnam

Quoniam tu solus sanctus Tu solus altissimus

Sanctus Pleni sunt caeli et terrae

gloria tua aethera in excelsis

celis

Agnus Dei qui tolles peccata mundi

Handwritten musical notation for the first system, featuring a vocal line and a lute line. The vocal line includes the lyrics "di misere re no".

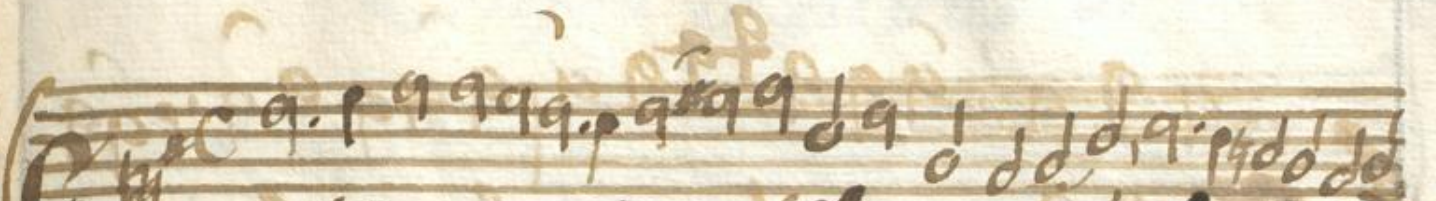
Handwritten musical notation for the second system, featuring a vocal line and a lute line. The vocal line includes the lyrics "bis".

In Festis Semidupl. A. 3.

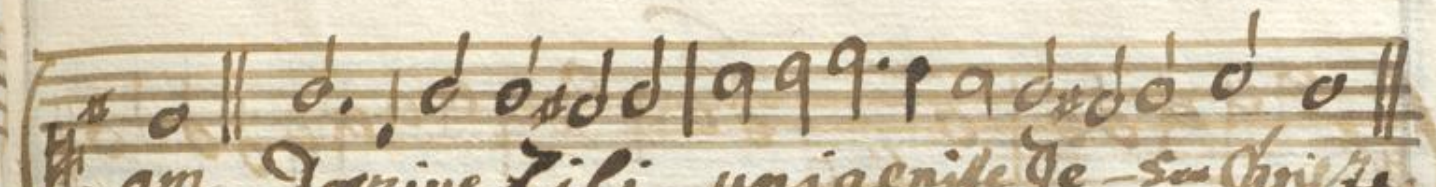
Handwritten musical notation for the third system, featuring a vocal line and a lute line. The vocal line includes the lyrics "rie e".

Handwritten musical notation for the fourth system, featuring a vocal line and a lute line. The vocal line includes the lyrics "Lison Chris - ke e - Lison".

Handwritten musical notation for the fifth system, featuring a vocal line and a lute line. The vocal line includes the lyrics "Ky rie e - Lison".



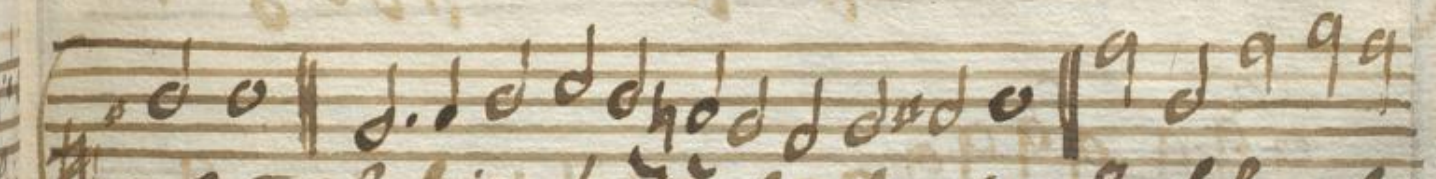
 ratiara gimus tibi pa magna gloria tu.



 am Domine fili unigenite de- su Chris te



 Qui tollis peccata mundi suscipe deprecationem



 nostra suscipe de- us susceptor. In solus al-



 tissimus Jesu Chris te. Sanctus

Meni - fae - li et - terra glo - ri a

lu - a Ho - ran - nain ex - cel - sis

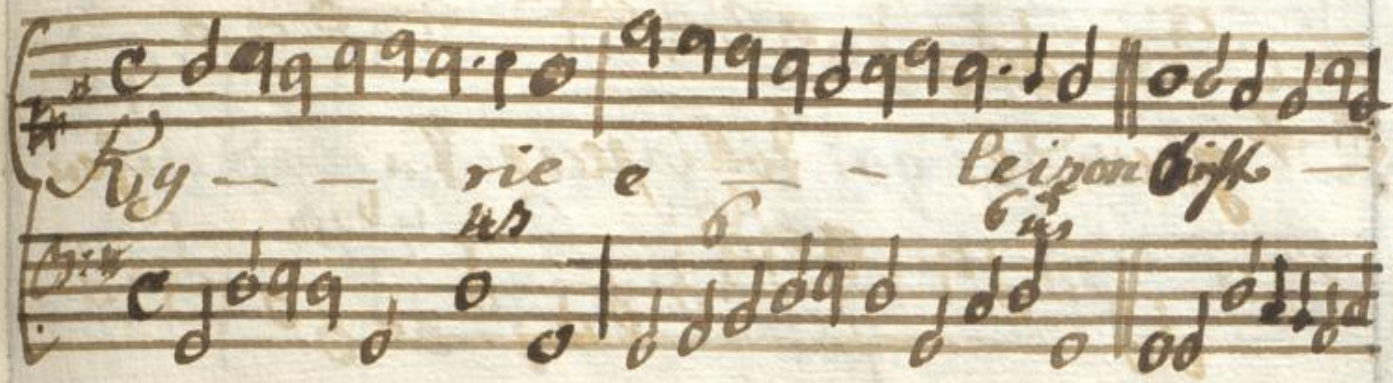
gnus De - i qui - tollis pec - cata

mun - di mi - se - re - re - no

bis

Infra Octavas B.

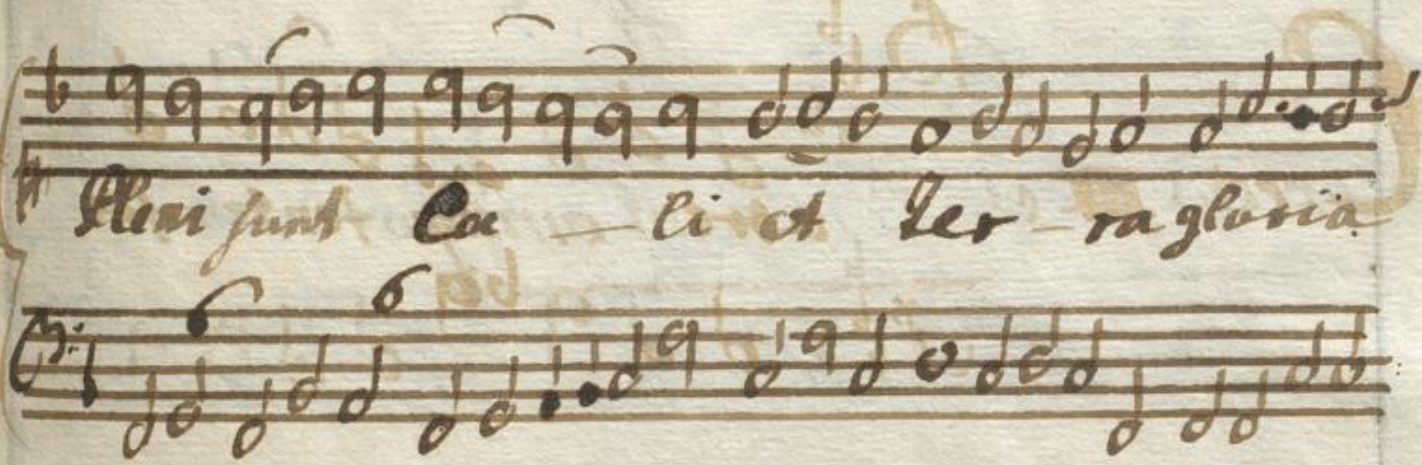
ry — — *rie* ^{us} *e* — — *leison* ^{us} *dis*



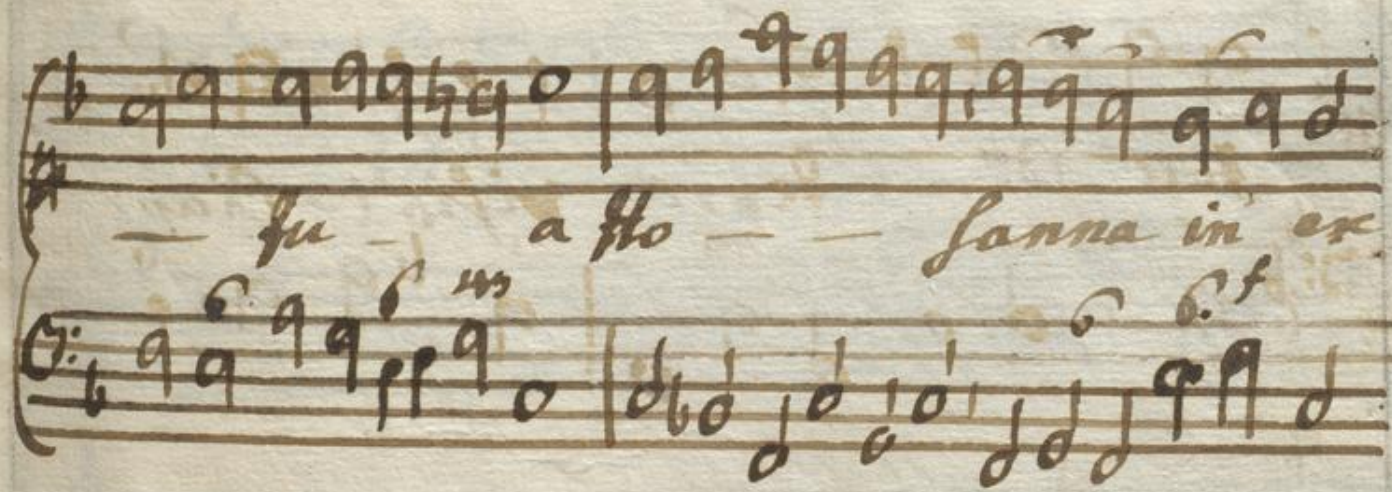
e — — *leison* *S* *anc* *ius*



Pleni sunt Coe — *li* *et* *ter* — *ra gloria*



— *fu* — *a* *Ho* — — *lanna* *in* *ex*



cel — *sis*.



Agnus Dei qui tollis peccata mundi miserere

This system contains two staves of handwritten musical notation. The upper staff is in treble clef with a key signature of one flat (B-flat) and a common time signature (C). The lower staff is in bass clef with the same key signature and time signature. The lyrics 'Agnus Dei qui tollis peccata mundi miserere' are written in a cursive hand between the staves.

ere no - bis

This system contains two staves of handwritten musical notation. The upper staff is in treble clef with a key signature of one flat and a common time signature. The lower staff is in bass clef with the same key signature and time signature. The lyrics 'ere no - bis' are written between the staves. The system concludes with a double bar line.

Credo *no. 7.*
atrem omnipotentem fac-

This system begins the 'Credo' section with a large, decorative initial 'C'. It contains two staves of handwritten musical notation. The upper staff is in treble clef with a key signature of one flat and a common time signature. The lower staff is in bass clef with the same key signature and time signature. The lyrics 'atrem omnipotentem fac-' are written between the staves.

tozem visi - bili - um

This system contains two staves of handwritten musical notation. The upper staff is in treble clef with a key signature of one flat and a common time signature. The lower staff is in bass clef with the same key signature and time signature. The lyrics 'tozem visi - bili - um' are written between the staves.

omnia et invisibi - lium. Et in unum

This system contains two staves of handwritten musical notation. The upper staff is in treble clef with a key signature of one flat and a common time signature. The lower staff is in bass clef with the same key signature and time signature. The lyrics 'omnia et invisibi - lium. Et in unum' are written between the staves.

Dominus Iesu Christus filius Dei unigenitum

Quae ex Patre natus ante omnia saecula deus de

Deo lumen de lumine deus verus de deo vero

genitum non factum consubstantialis Patri per quem

omnia facta et qui pro nobis homines

et pro nostra salute descendit de caelis

piano:

Et incarnatus est de spiritu sancto ex maria

virgine Et homo factus est. Et vitam verbum

in faculi a

R. quando elevatum B. ^{mus} depositat, in Choro
ad sepulchrum.

Mari - a Magdale - - ne et altera

Mari - a ibant dilu - culo ad mo - numentum

Jesus quod queritis non est hic sicut sicut

locus est prae - des vos in gabila - am ibi

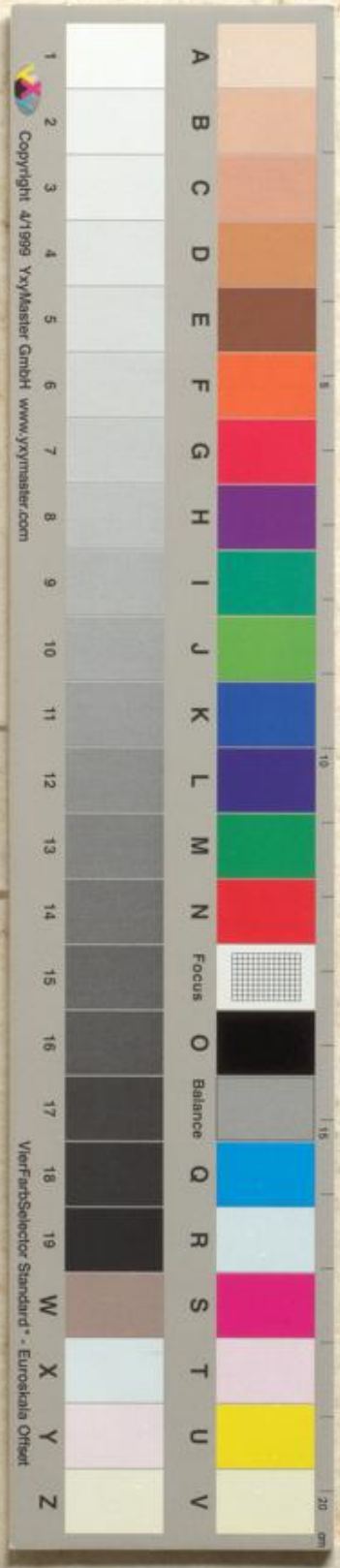
Cum vide - bitis alleluia al - lelu - - ia

[Faint, illegible handwritten text, likely bleed-through from the reverse side of the page. The text is mostly illegible due to fading and bleed-through.]

140







Copyright 4/1999 VxyMaster GmbH www.vxymaster.com

VierFarbSelector Standard - Euroskala Offset