

Badische Landesbibliothek Karlsruhe

Digitale Sammlung der Badischen Landesbibliothek Karlsruhe

Choralbuch für Orgel - Cod. St. Blasien 55

[St. Blasien], [18. Jahrh.]

Missa pro Festis Solemnioribus

[urn:nbn:de:bsz:31-51421](https://nbn-resolving.org/urn:nbn:de:bsz:31-51421)

Sequentia in Festo **X^{ris}** Christi

Lauda sion salvatorem lauda ducem et passio sem in hym
[Musical notation]

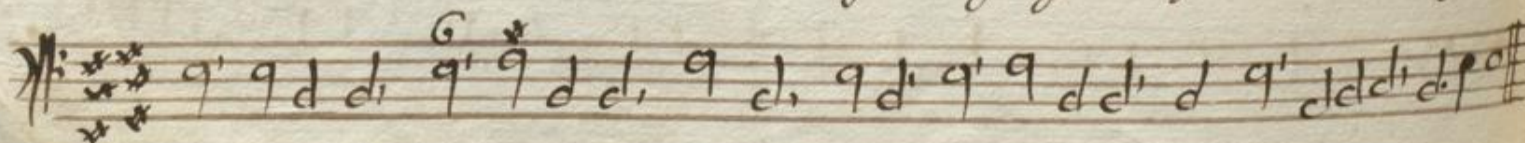
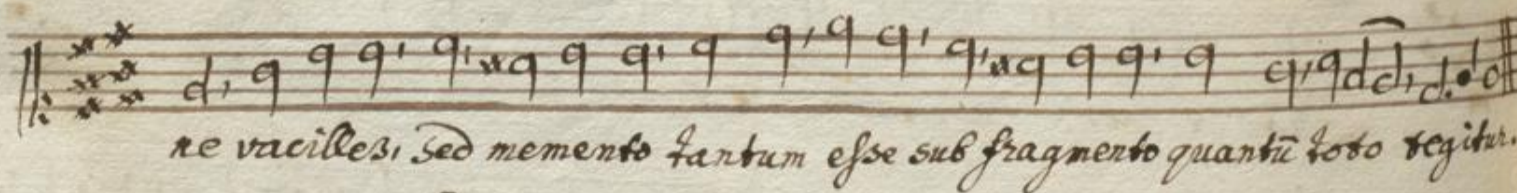
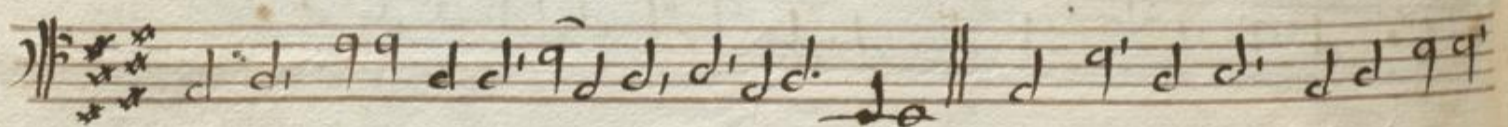
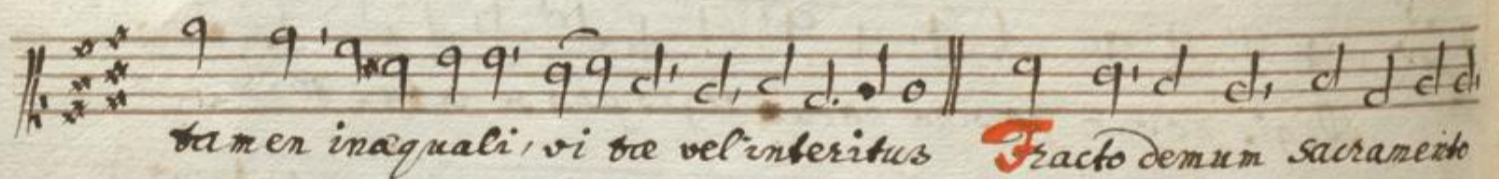
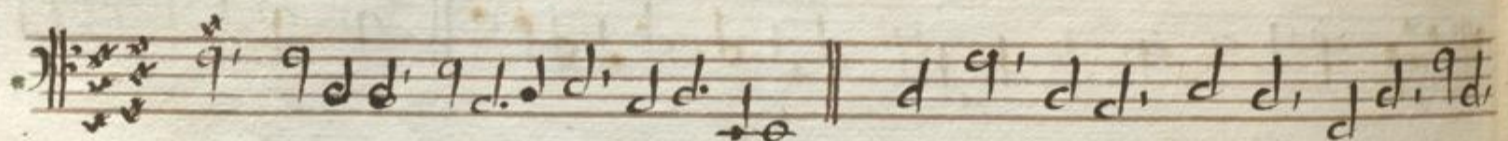
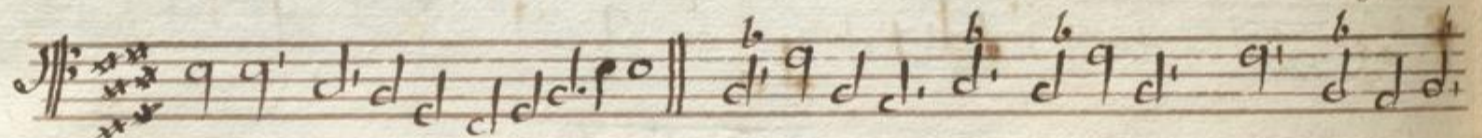
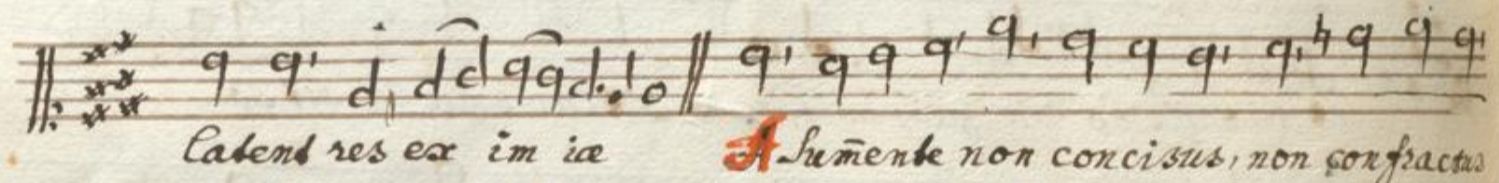
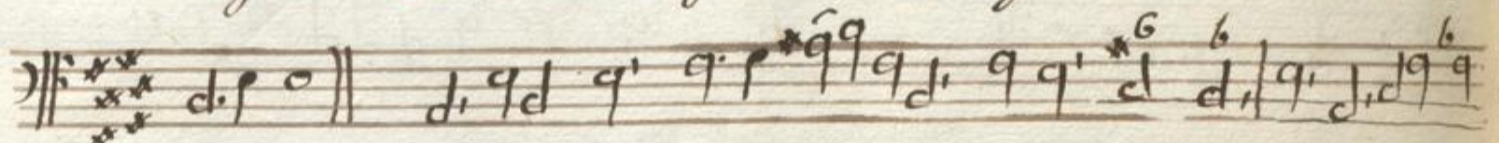
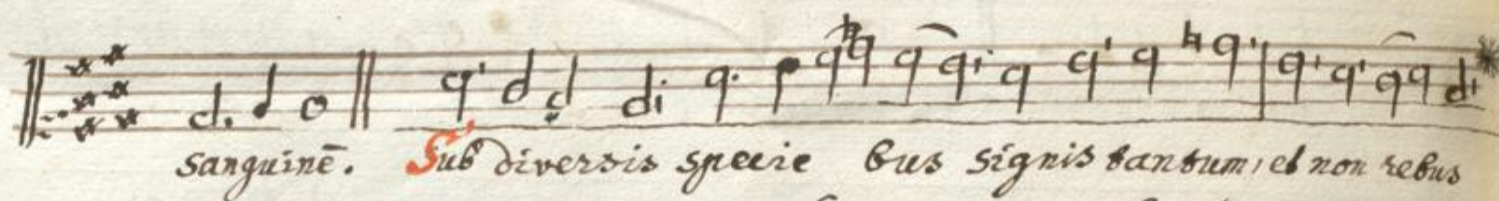
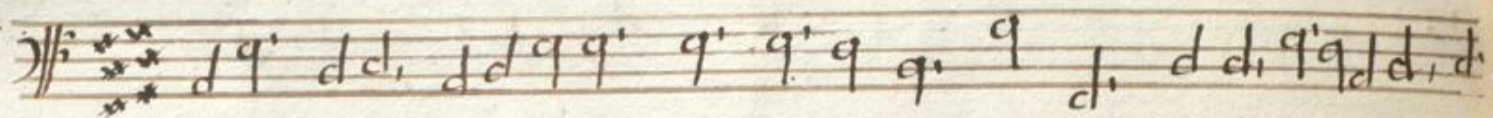
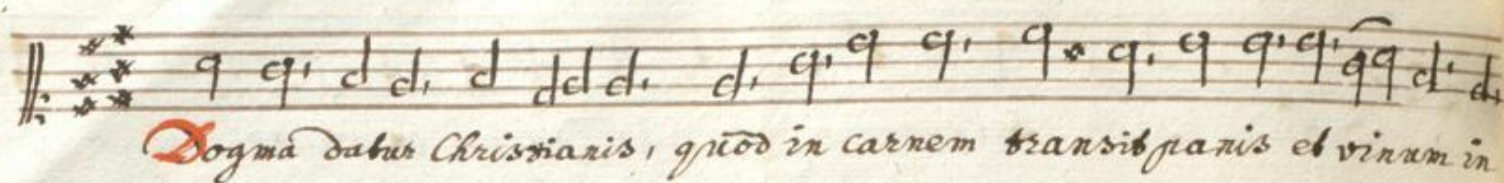
nis et canticis **L**audis thema specia lis panis vivus
[Musical notation]

et vitalis ho die proponitur **S**is laus plena sis so nora
[Musical notation]

Sis iucunda, sis decora men sis iubilatio **I**n hac mensa no vi
[Musical notation]

Regis novum pascha novum legis pha se vetus terminat
[Musical notation]

Quod in coena Christus gessit, faciendum hoc expressit in sui memoria
[Musical notation]

Sequentia in Festo X^{mi} Christi.

Et per Octavam.

Handwritten musical notation on a five-line staff, featuring various note values and rests.

Ecce parisi Angelorum factus cibus viatorum, vere parisi fili-

Handwritten musical notation on a five-line staff, featuring various note values and rests.

orum non mittendus canibus **In** figuris praesignatur,

Handwritten musical notation on a five-line staff, featuring various note values and rests.

cum Isaac imolatur, agnus Paschae deputatur, datur manna

Handwritten musical notation on a five-line staff, featuring various note values and rests.

Patribus **Tu** qui creata sis et vales, qui nos pascis hic

Handwritten musical notation on a five-line staff, featuring various note values and rests.

mortales, tuos ibi comensales, cohæredes et sodales fac sanctorum

Handwritten musical notation on a five-line staff, featuring various note values and rests.

civium **A** — — — — — men **al** lelu ia

Handwritten musical notation on a five-line staff, featuring various note values and rests.