

Badische Landesbibliothek Karlsruhe

Digitale Sammlung der Badischen Landesbibliothek Karlsruhe

Analysis libri Geneseos - Cod. St. Blasien 88, 89 und 90

[Teil 1] - St. Blasien 88

Ussermann, Aemilian

[Salzburg], [nach 1769]

Caput XIV

[urn:nbn:de:bsz:31-5602](https://nbn-resolving.org/urn:nbn:de:bsz:31-5602)

Caput XIV.

Vers. i.

בְּיָדַי בְּיָמַי

vid. fol. 12, 16. et 35 anal. construct. plus.
mutato ם' in י'.. cp. 62, et 17 in 13 cp. 101,
quod deinde utroque sub י' obprob. 1. venit cp. 124,
utraq. syll. longa simplex acent. ton. pafchta
in ult.

אָמַר פֶּלֶן

nom. prop. viri sing. 13 qui fit post breven cp.
23. i. et 3 syll. brevis a fine comp. 2 longa simpl.
acent. ton. munalik in ult.

Lex.

קָלָה - שְׁנַעַר

vid. fol. 290. sing. masc. form. prop. audea
gal cp. 46, construct. marent. mutis cp. 106 et
199, utraq. syll. brevis, i. simplex cum methaq
cp. 39, alt. a fine comp. vid. it. fol. 290 anal.

אֶרְיוֹה

nom. prop. viri sing. 13 qui fit post breven cp.
23. i. syll. brevis, 2 longa cum acent. ton. fichtika.
utraq. a fine comp.

מִלְהָ אֵלְפָר

vid. fol. 290 et supra anal. nom. prop. loci
sing. i. syll. brevis a fine comp. 2 longa simplex.
3. longa a fine comp. cum acent. dist. athrabh.

פֶּדְרָל עֵמֶר

vid. nom. prop. viri sing. 13 qui fit post bre-
ven cp. 23, quia est 17 hhat. cp. 26. mid. 17.

lys. i.

V.

תורה

תורה

2 in (2) (10)

f. 1. 2. 3. 4. 5. 6. 7. 8. 9. 10.

red. f. 1. 2. 3. 4. 5. 6. 7. 8. 9. 10.

אשר

אשר

אשר

אשר

תורה

תורה

תורה

תורה

תורה

אשר

אשר

אשר

תורה

תורה

תורה

תורה

תורה

אשר

אשר

אשר

אשר

אשר

אשר

אשר

אשר

אשר

אשר

i syll. brevis utrinque comp. reliquæ duo longæ
singl. ult. brevis a fine compof. accent. ton. pa-
fakta in penult.

קָלָה עֵי לָם

vid. fol. 290 et præced. nom. propr. sing. (1)
quiescit post (1) (2) utraque syll. longa i
simplex, 2 a fine comp. uen. accent. ton. faq. gha-
gaton.

וּתְדַעַר

nom. propr. viri, sing. uen. prof. ? (1) 245 (2)
quiescit post breuem (1) 237. i syll. brevis utrin-
que comp. 2 longa utrinque a fine comp. uen.
accent. ton. fiphkha.

קָלָה צוּיָם:

vid. fol. 290, fol. præced. et 286 anal. uen.
distribut. siluq.

Versus 2.

עֵשׂוֹ

vid. fol. 38 anal. nom. plur. ref. 3. tom. in
gal (1) 19 i 3. utraque syll. longa simplex, accent.
ton. murakhi in ult.

Belwon.

קָלָה מְנָה

radix לָחַם (1) 82 lex. 3. nomen plur. sing.
femin. ult. fol. forme propr. auct. ex hispal
(1) 48 (2) quiescit post breuem (1) 237. i syll. bre-
vis a fine compof. reliquæ duo longæ simpl. ac-
ton. revia in ultima

אֶת-בְּרַעַ

vid. fol. 3, 36. nom. propr. sing. masc. utraque
syll. brevis, i simplex uen. accent. ton. 2 a fine
compof.

Vers. i. 2.

reliquas dicit long
osf. accent. tom.

קל

long. sing. 11
ue syll. long. i

accent. tom. long

ותד

! 11 11 11 11
syll. brevis utri

q. fine comp. uen

קלד

2 8 6 avar. uen

2.

קט

ref. 3. tom. 11

regia simplex uen

קלד

omnes, plur. long
accent. ex. h. d. h. d.

om. Co. 23. i. f. d. d.
long. & simplex uen

אהה

long. mag. uen
end. tom. 2. 11

נִלְקָה סֹרִים וְאֵת בְּרִשָׁע

vid. fol. 290, 355. 348. 3, 56. nom. propr. vni-
sing. masc. (:) quiescit post breuem sp. 287 utraq
syll. brevis a fine compos. accent. ton. tsipkha in alt.

נִלְקָה עֲמֹרָה שְׁנָאֵב

vid. fol. 290, 355. 348 anal. nom. propr.
sing. (:) quiescit post breuem sp. 287. i syll. brevis,
2 longa cum accent. ton. munaahl, utraq a fine
compos.

נִלְקָה אֶדְנָה

vid. fol. 290, 355 anal. nom. propr. sing. (:) quies-
cit post breuem sp. 287. i syll. brevis a fine compo.
2 longa simplex cum accent. ton. revia.

וְשִׁנְאָה בָּר

nom. propr. sing. (:) quiescit post breuem sp. 287
cum post. ? (sp. 124). i syll. brevis utring compo.
2 longa simplex cum accent. ton. pashta, 3 brev.
a fine compo.

נִלְקָה עֲבָיִים

vid. fol. 290, 355. anal. nom. propr. plus.
masc. abfol. utraque syll. longa, i ab vnt. alt.
a fine compos. cum accent. ton. saqah qaton.

וְנִלְקָה בְּלַע

vid. fol. 290, 355 anal. nom. propr. sing. utra-
que syll. brevis, i singl. cum accent. ton. tsipkha.
2 a fine compos. post. ? ante N sp. 124.

הִיא - עֲעֵרָה

vid. fol. 77 et 114 anal. nom. propr. sing. i syll.
longa simplex cum distind. ton. au. silaq, 2 bre-
vis a fine compo.

v. 2.

מִיָּדָה סוֹ

nom. utrag. m.

en Co. 23, utrag

son. hiebbelau

מִיָּדָה ט

al. nom. utrag.

23, i. hiebbelau

ahk. utrag. a. f.

מִיָּדָה י

erger. hiebbelau

erger. a. finitum

en. peria.

מִיָּדָה יא

erger. hiebbelau

erger. utrag. m.

en. hiebbelau. hiebbelau

מִיָּדָה יב

m. utrag. plus.

sa. i. ab. hiebbelau

h. hiebbelau. hiebbelau

erger. hiebbelau

accant. hiebbelau

מִיָּדָה יג

m. utrag. hiebbelau

m. acc. hiebbelau

מִיָּדָה יד

m. utrag. hiebbelau

m. acc. hiebbelau

Vers. 3.

Congrega-
vit.

בָּלֵא לָהּ חֲבֵרוֹ
 vid. fol. 43. et 63 anal. radix חֲבֵר (p. 46 lex.)
 verbum plenum, prof. plur. perf. 3. com. in gal
 (p. 140). utraque syll. longa, i simplex cum na-
 theq (p. 39). 2 ab iuit. composit. cum accent. ton.
 revia.

Vallis.

אֶל-עֵמוֹק
 vid. fol. 87 anal. radix עֵמוֹק (p. 111 lex.)
 nom. plur. sing. masc. forme סֵפֶר nuds ex
 gal (p. 45). i syll. longa simplex cum au. ton.
 tiphkha, 2 brevis a fine composit.

הַשְּׂדֵיִם

nom. propr. plus. masc. absol. cum prof. הַ
 (p. 122). duds i syll. brevis, 3 longa cum accidit
 athnahh composit. a fine composit.

Mare.

הוּא יָם
 vid. fol. 77. et 26 anal. sing. const. manen-
 te (7) (p. 102. 45). syll. longa a fine composit.
 acc. ton. merecha.

Sal.

הַפִּלֶחַ
 radix טֵלַח (p. 86 lex.) nom. plur. sing. masc.
 absol. forme זָרַע nuds ex gal (p. 46). prof.
 הַ (p. 122). 3 syll. brevis, i et ult. a fine composit.
 2 simplex cum tono, accent. distinct. siluq.

Versus 4.

שְׂתֵיִם

vid. fol. 156 anal. manente יָם per except.
 ult. syll. longa a fine composit. cum accent. ton.
 mathpash.

3. 4.

חבר
com in gal
olee cum m
accus. for.

ii. iii. lxx.
סדר
cum auct.

cum prof.
ia cum auct.

prof. ma
ria compo

lin. fong. m
a fine comp
ant. fong.

exp. exp.
accus. for.

359.

Caput XIV. Vers. 4. 5.

Servio.

עֲשֶׂה שְׁנֵה עֲבֹד

vid. fol. 172. 168. et 2. 81 anal. verb. plur. ut fol. proed. in חֲבֹד. accent. ton. f. i. h. h. h. a.

Tres.

אֶת-בְּרֵךְ לְעֹמֵר וְשֵׁשׁ-עֲשֶׂה

vid. fol. 3. 36. 355. 167. construct. sing. wide (:) transit in (:): q. 101. 1. 1. alia, manus q. 106. ob magis in (:) h. h. h. h. (q. 20) cum prof. 1. a. i. h. e. (:): q. 124. i syll. longa simplex 12 brevis utrinque

Abellavit.

שְׁנֵה תִרְדּוּ :

vid. fol. 168. anal. radix וְרָדָה q. 88 lex. 1. verb. plur. ut fol. proed. in וְרָדָה. (:): vero tono o fine peridi retract. (q. 33) transit in (:) (i. h. h.) utroque ex (-) ortum q. 138. 1. 3 syll. longa simpl. accent. ton. distinct. siluq

Versus 5.

Quadra-

וּבְאֵר בַּעַ עֲשֶׂה שְׁנֵה בָּא

41. girta. vid. fol. 217. anal. sing. absol. construct. ult. syll. brevis a fine compos. it. 172. 168. et 87 anal. prof. sing. perf. 3. mase. in gal q. 190 syll. longa simplex cum accent. ton. mutab. h.

venit.

בְּרֵךְ לְעֹמֵר וְהֵן לְכִים

vid. fol. 355. et 290 anal. plur. mase. absol. mutato i (:): in (:): mobile sub dagh. f. (q. 2) 2. in (:) q. 742. prof. 1. q. 124. et הוּוּ q. 122. i syll. brevis utrinque compos. 2. longa ab init. compos. 3. longa a fine compo. cum accent. ton. mutab. h.

אֲשֶׁר אֵהוּ וַיִּכּוּ

vid. fol. 20. 209 et 219 anal. it. 152. fut.

plus. pers. 3. masc. in hiphil. Co. 199 et 231,
 cum prof. 7. convers. fut. Co. 1233. dicitur in syll.
 brevis a fine compos. 3. longa simplex avert. ton.
 retracta, (p. 32.) makh. nach in perult.

את־רפאים

vid. fol. 3. 36 anal. nom. propr. plus. masc.
 absol. utraque syll. longa. i. ab initio. alt. a fine
 compos. cum accent. ton. pascheta

בעשתרה

nom. propr. plus. femin. cum prof. 7. Co. 124,
 (:) i. quiescens post brevem Co. 233 cum seq. dagh.
 leni Co. 14. 2. mobile post aliud Co. 217 in syll. bre-
 vis, 2. longa cum accent. ton. munnakh. ambo u-
 tringue compos.

קרנים

nom. propr. dual. (:) quiescit, post brevem Co.
 233. in syll. et ult. a fine comp. 2. simplex cum
 accent. ton. saqeph gadhon. brevis. omnis.

ואת־ההיגים

vid. fol. 3. 36 anal. nom. propr. plus. masc.
 absol. cum prof. 7. (Co. 122) in syll. brevis. a fine comp.
 2. longa simpl. 3. longa a fine comp. cum accent.
 ton. hiphkha.

בהם

nom. propr. sing. cum prof. 7. Co. 124. in syll.
 longa utringue compos. cum accent. dif. ath-
 nakh.

ואת־האימים

vid. fol. 3. 36 anal. nom. propr. plus. masc.
 absol. cum prof. 7. ante gutt. Co. 122. 3. syll.
 longa, i. et 2. simpl. 3. a fine comp. cum accent.
 ton. saqeph gadon. methegin 1. Co. 38.)

8

igq et 25i
duo i fcl
plex uacat in
mult.

or. plus. ruy
itio. alia fca

of. 7. 10. 12
cum fca. ruy
213 i fcl in
habl. amou

off. brocoi
plex uac
omul.

!! plus. ruy
bre. afcau
pp. uacat uacat

10. 12. 13. 14
and 213. 214

10. plus. ruy
122. 131
or. uacat uacat
(2. 28.)

בְּשׂוּה

nom. prop. sing. cum ^{prof.} בְּ (p. 124) utraq
 syll. longa, i ab inst. comp. 2 simpl. cum auct.
 ton. fighhha.

קִרְיָתִים:

nom. prop. plur. masc. dual. (2) quiesc. prof
 breven p. 233 i et ult. syll. breves, a fine comp.
 reliquo duo longo simplices. ult. (7) loco (-)
 ob auct. distinct. p. 37) siluq.

Versus 6.

וְאֶת־הַחֲרִי

vid. fol. 3. 36 anal. nom. prop. sing. genti
 lit p. 47 cum ^{prof.} וְ ante gutt. p. 122)
 i syll. brevis cum methaq p. 89, reliquo duo
 longo, omne simplices, auct. ton. fighhha
 in ult.

בְּחֶרֶם

vid. fol. 230. sing. masc. cum aff. ם, prof. 3.
 masc. plus. p. 89, unde i (2) non הֶרֶר
 transit in (-) ob concurs. 2. in (i) p. 99).
 cum ^{prof.} בְּ (p. 124). (i) non quiescit sub litt.
 geminata p. 22). i syll. brevis ^{ab inst.} utriusq
 cum methaq intellectu p. 39). 2 longa utriusq
 compof. cum auct. ton. muraah.

שֵׁעִיר

nom. prop. sing. utraque syll. longa, i simpl.
 2 a fine comp. cum auct. distinct. aff. muraah.

עֲדָאִיר

vid. fol. 126. et 325 anal. sing. construct.

ab absol. אֵיל, forma טַיִץ (p. 50) contract.
 vocal. (p. 68. 38). aut si mavis, ^{ab absol.} construct. sing.
 forma propr. ex qd (p. 50) syll. longa a fine
 compos. cum accent. ton. anuvakh.

פַּחַן

nom. propr. sing. utraque syll. longa, i simul.
 2 a fine compos. cum accent. ton. sagyah gadion.
 Desertum.

אֲשֶׁר עַל-הַתְּרָבָר:

vid. fol. 20. 8. 252. sing. masc. absol. forma
 אֲשֶׁר אֲשֶׁר aucto ex hiphil (p. 48) cum prof. הֵן
 (p. 122) (:) quiescit post brevem (p. 23) cum
 seq. dagh. leni (p. 14) i duo syll. brevis, 3 longa
 cum accent. ton. distinct. siluy, omnia a fine
 compos.

Versus 7.

וְיִשְׁבּוּ וַיִּבְאוּ אֶל-עֵין

vid. fol. 238. 93 et 190 cum prof. וַיִּנְוֵס
 fut. (p. 123. 87. et 103 anal. sing. construct.
 dento affixo. syll. longa a fine comp. cum accent.
 ton. mahzack.

נוֹשֵׁפֵט

nom. propr. sing. (:) quiescit post brevem (p. 23)
 cum seq. dagh. leni (p. 14) i syll. brevis, 2 longa
 non accent. ton. pafchta, utraque a fine compos.

הוּא קָדֵשׁ

vid. fol. 77 et 114 anal. nom. propr. sing. utraq
 syll. longa, i similes, 2 a fine comp. cum accent. ton
 sagyah gadion.

וַיִּבְנוּ תְּבֵל-שֵׁרָה

vid. fol. 152, 359. 3, 36. 73. et 64 anal. construct.

rs. b. 7.

Soj. i. i. i. i.
abfor
comfrank. sic
longa a g. i. i.
ad h.

le longa. i. i. i.
- lageth. g. i. i.

וְשֵׁב
וְשֵׁב
וְשֵׁב
וְשֵׁב

fol. 85.

2. abfor. i. i.
2. acm. i. i.
2. ca. 2. 3. i. i.
2. bre. i. i.
2. om. i. i.

וְשֵׁב
וְשֵׁב
וְשֵׁב
וְשֵׁב
וְשֵׁב

bre. i. i.
2. long.
2. i. i.

2. i. i.
2. i. i.
2. i. i.

וְשֵׁב
וְשֵׁב

ling. unde (r) in (:.) q. 101) et הָ in הָ mult.
 q. 62.) syll. longa ab init. comp. cum acc. ton. f. shkha.

הַעֲמִילָה

nom. pro. gentilit. cum prof. הָ ante guttas.
 q. 122.) 4 syll. longa, i simplex cum methaq. q. 38.)
 2 ab init. comp. reliaq. simpl. accent. ton. dist. ath-
 nahl in ult.

וְנִסְאֵת-הָאֲטָרִי

vid. fol. 106. 3. et 36 anal. nom. pro. sing.
 masc. cum prof. הָ ante gutt. (q. 122.) i syll. longa
 simplex cum methaq. q. 38.) 2 ab init. comp.
 3 simplex cum accent. ton. sequit. gal or, longa

הַעֲטָב

vid. fol. 153 anal. particip. sing. masc. benoni
 in gal q. 140.) cum prof. הָ q. 122.) i syll. bre-
 vis a fine comp. 2 longa simpl. 3 longa a fine
 comp. cum accent. ton. f. shkha.

בְּחַצְצוֹן פְּתוּרִים

nom. pro. cum prof. בְּ q. 24.) syll. brevis
 ab init. comp. cum methaq. q. 39.) 2 longa u-
 traque comp. cum accent. ton. merecha. it u-
 traque syll. longa, i simplex, 2 a fine comp. cum
 accent. ton. distinct. siluq.

Versus 8.

וַיַּעֲטִילָהּ-סֹדִים וַיְטַלְהָ עֵטָרָה וַיְנַלְהָ

vid. fol. 74, 255, 290, 356, 378. anal.

אַרְמָה וַיְנַלְהָ עֵבִים וַיְנַלְהָ בְּלַע הָוָא-

vid. fol. 357, 290, 356, 77 et 114 anal.

Instruxit.

עָרַר וַיַּעֲרְבוּ

vid. fol. 357. anal. radix עָרַר (p. 115 lex.)
 fut. plus. 3. pres. masc. עָרַר in ^{hiptil} (p. 141)
 variant. formis (p. 157) resolutio ? in (r-)
 accelerat gratia (p. 172. ee.) quod ob conuuls.
 fraconiditus in (-) (p. 25.) cum prof.) con-
 vers. fut. (p. 123). (:) quis fut. post breuem -
 (p. 23.) i syll. et 3 breues a fine comp. 2 bre-
 vii cum methaq (p. 39.) 4 longa simplex cum
 auent. ton. jeshiv. (p. 33 IV.)

Cum eis.

אֵתְּםִי וְלִחְמָהּ בְּעֵמֶק הַשִּׁדְיִים:

vid. fol. 209. cum aff. ׀, pres. 3. masc. plur.
 (p. 89.) ull. syll. longa a fine comp. it. 356.
 et 358 anal. cum diffinit. seluq.

Versus g.

אֵת פְּדַרְלֵעֵנֶר מְלֵךְ עֵילִם וְתַדְעָל

vid. fol. 3. 355. 290, 355. et 356 anal.

מְלֵךְ גִּזְיִים וְאַמְרָפֶל מְלֵךְ שִׁנְעָר וְאַרְיֹה

vid. fol. 290, 355. 286. 355 anal.

מְלֵךְ אֶלְסֶר אַרְבַּעַה הֵן לְכִיסֵי אֶת־הַחַמְשָׁה:

vid. fol. 290, 355. 41 et 175. sing. absolut.

it. 290, 359. 3, 36. et 171 anal. femin. mu-

tato (r-) in (-r) (p. 71) et (r-) cum dagh. f. per
 legem equival. (p. 68.) et 53 lex.) cum prof. ׀
 ante guttur. (p. 122.) i syll. brevis simpl. cum methaq
 (p. 39.) 2 breui utring comp. 3. longa simpl. cum seluq.

Futurus

Versus 10.

ועתה השלים בארת בארת

vid. fol. 358 anal. radix בארת q. 18 lex. 3
nom. plen. plus. auct. form. a sing. בארת form.
שאלה aucto ex gal q. 46. 3 rejecto הו' addito
ות (q. 88). i. syll. brevis simplex cum metheg q.
39 2 longa utrinque conjos. cum fono.

Fugere.

חמר וינסו

vid. fol. 303 anal. radix חמר q. 92 lex. 3 auct.
יח q. 184. fut. plus. perf. 3. mase. in gal q. 191.
cum 7 convers. fut. q. 123. (2.) altern. pro
(1) q. 252. et 68. i. i. syll. brevis a fine conj.
2 longa singl. ut et ult. 3 brevis simplex cum
metheg in ell. (q. 39) auct. ton. kethiv in ult.

Cecidit.

מלה סרם ועמרה ויפלו

caubuit. vid. fol. 290. 355. et 348 anal. radix מלה
q. 97 lex. 3 def. 3. q. 178. fut. plus. perf. 3.
in mase. in gal q. 191. cum prof. 7 convers. fut.
q. 123. (3.) movetur sub dagh. f. q. 210. i. i.
syll. brevis a fine conj. 3 longa ab init. conj.

Ibi.

שמה

vid. fol. 71 anal. cum הו' conjos. locali. et dagh.
f. in 22 q. 148 lex. et 179. q. 1. utraque syll. long.
i a fine conj. cum auct. ton. diffinet. alternabil.

Synesicut. 2 simplex.

ההנשארים

radix הנשארים q. 140 lex. 3. verb. plen. particip.
plus. mase. absol. in medial q. 140) cum prof.

1) Cp. i 2 q et ה' Cp. i 22 q (i) quiescit post breuem
Cp. 23 q. 1 syll. brevis utrinque comp. 2 brevis
a fine comp. 3 longa simpl. 4 longa a fine comp.
uon accent. ton. *hijhkhha*. **הרה**

vid. fol. 230 anal. uon ה' locali Cp. 38 lex
et altern. (i) pro (-) Cp. 69. 68. excid. dagh. f.
ex 7 Cp. i 6 q. 1 syll. brevis simpl. uon accent. ton.
merecha, 2 longa a fine comp. ob seq. dagh
f. in **:וס**

vid. fol. *uodid*. *uod*. plus. *ref*. 3. *uapom*. in
gal Cp. 141) uon dagh. f. eushon. in 1 Cp. i 8 q
utrage syll. longa simplex. accent. ton. distinct.
siluq. in *uoult*.

Tulerunt.

Versus ii.

ויקח

vid. fol. 81 anal. plural. (i) movet. sub lit. da
gheshk f. sob (i) subject. excidit Cp. 17 q. notanda
Cp. 21 q. 2 syll. brevis simplex uon methog in fol.
Cp. 39 q. 3 longa ab init. comp. uon tono.

את כל דלש

vid. fol. 3. 36. 43. 3 2 3 anal. sine aff. altern.
C. 3 pro 7 Cp. 68 q. 1 syll. brevis utrinque comp.
uon accent. ton. *qadma*.

סדם וענורה ואת כל אכלם

vid. fol. 348. 3. 36. 43. et 56 anal. rejecto
ה' Cp. 94 q. aduuto *u* aff. 3. *ref*. *masf*. plus. Cp.
89 q. uel. syll. longa a fine comp. cum accent.
ton. *hijhkhha*. **והלכה**

vide fol. 280 anal. retracto tono ob finem

P. ii.

apud hunc
10. 2. hunc
a. f. hunc

Co. 28. hunc
D. hunc
accid. hunc
hunc. hunc

hunc. hunc
D. hunc
hunc. hunc

hunc. hunc
hunc. hunc
hunc. hunc
hunc.

hunc. hunc
hunc. hunc

hunc. hunc
hunc. hunc
hunc. hunc

hunc.

periodi (p. 33) et (:) ex (...) ortum, in illud
 convertitur (ib.). Duo ult. syll. longo simplex,
 acent. distinct. filiiq. ton. in uult.

Versus 12.

וַיִּקְרָא אֶת־לֹאֲמֵי־רַבְשִׁי

vid. fol. 81, 266. 3, 36. 314. 323 et proad.
 anal. uon aff. 1. ref. 3. mase. sing. (p. 88) i
 syll. brevis ab initio comp. cum methug in tel.
 (p. 39). ult. longa simplex cum acent. ton.
 sebhiv.

בְּוֹ-אֶת־

vid. fol. 163, 184. 138, format. ut isy anal
 in אַבְרָם וַיִּלְכֹּד וְהוֹאִישׁ בְּבַסְדָּם: אֶת־

vid. fol. 314. 280, proad. 77. 153, 363.
 et 348. anal. prof. 7 ante (:). p. 124) quif-
 cens, post breuem (p. 23) i syll. brevis, 2 longa
 cum acent. ton. distinct. filiiq. utraq. a fine
 compos.

Versus 13.

וַיִּבֶא

vid. fol. 93 et 190 anal. sing. uon 1 convers. fut.
 evafet. (p. 123).

הַפְּלִיט

Profugus. Radix פָּלַט (p. 120 lex.) verb. plenum, nom. sing.
 mase. forme פָּלַט נודו ex gal (p. 45) uon prof.
 17 (p. 122) i syll. brevis a fine comp. 2. longa sin-
 plex, 3 longa a fine compos. cum acent. ton. sa-
 gaph gadhon.

וַיִּנֵּי

vid. fol. 112 lex anal. prof. fut. sing. ref. 3. mase.
 in. hiphil (p. 198) form. variant. (p. 228) uon (:)
 loco (:) (p. 258) cum prof. 7 convers. fut.

12. 13.

om, in illi
18. fimpli
ult.

א
13. 14. 15.
16. 17. 18.
19. 20. 21.
22. 23. 24.
25. 26. 27.
28. 29. 30.

187 and

א
19. 20.
21. 22.
23. 24.
25. 26.
27. 28.
29. 30.

187 and

א
19. 20.
21. 22.
23. 24.
25. 26.
27. 28.
29. 30.

א
19. 20.
21. 22.
23. 24.
25. 26.
27. 28.
29. 30.

- fol. 278 -

cp. 1237. d. u. syll. i. brevis. & longa cum acc. ton. *tiq'hkha*, omnes a fine compos.

Ebrous.

לְאִבְרָם הָעִבְרִי

vid. fol. 314. radix עִבְרִי cp. 105 lex. nom. *plexum* sing. masc. form. *iq'qr*. aucto ex gal. 47) cum prof. ׀ ante gutt. cp. 1227. (:) quiescit post brevem cp. 237. i. syll. longa simplex cum metheg cp. 387 2 brevis a fine compos. & longa simplex cum accent. ton. distinct. *athnahl*.

וְהוּא שִׁבּוֹן

vid. fol. 77. et 132 anal. particip. *benoni* sing. masc. cp. 1407 utraque syll. longa, i. simplex, 2 a fine compos. cum acc. ton. *q'dma*.

בְּאֵלֵי הַמִּזְבֵּחַ הָאֲמֹרִי אָחִי אֲשֶׁלִּי

vid. fol. 325, 354. & 63. 135, 367. anal. nom. *noqr* sing. (:) quiescit post brevem cp. 237 cum seq. *daghi leni* cp. 147 i. syll. brevis, 2 longa cum acc. ton. *rashta*, utraque a fine compos.

וְאָחִי עֵינֵר

vid. fol. 135, et 367 anal. cum prof. ׀ ante (:) cp. 1237. alt. nom. *propr* sing. utraque syll. longa, i. simpl. 2 a fine compos. cum accent. ton. *saqqah qaton*.

וְהִסְבֵּעְלִי

vid. fol. 108 anal. cum *prof*. ׀ et 8' anal. construct. plur. mutato ׀. in ׀. cp. 627 et 77 in (:) cp. 1017, cum prof. ׀ ante (:) cp. 1237. i. syll. brevis simplex cum metheg cp. 397. 2 longa ab init. comp. cum accent. ton. *merecha*.

בְּרִית־אֲבְרָם:

vid. fol. 209, sine affixo. 314 anal. cum diff. *siluq*.

Adiuvit.

Versus 14.

וְשָׁטַעַ

vid. fol. 109 anal. sing. uon \bar{c} loco \bar{i} Cp. 174
ult. syll. brevis a fine comp. uon accent. ton. munakh.

Captivum

אָבְרָם כִּי נִשְׁבָּה

Duxit. vid. fol. 314. et \bar{i} anal. \bar{i} radice וְשָׁטַעַ Cp. 140
lex. \bar{c} quiesc. כִּי (Cp. 186) prot. sing. perf. \bar{c} mase.
in nichal Cp. 192 \bar{c} (\bar{c}) quiescit post breuem Cp. 23
seq. dagh. leni Cp. 14) \bar{i} syll. brevis a fine compof.
2. longa simplex eun accent. ton. hiphkha.

Armarit.

אָתוֹ וְיָרַק

vid. fol. 135 anal. rad. וְיָרַק Cp. 137 lex. plen.
fut. sing. perf. \bar{c} mase. in hiphil, for. contr. quiesc.
יָרַק Cp. 198 \bar{c} , variant for. uon \bar{c} loco \bar{c} Cp.
259) quod propter tonum ob \bar{i} convers. fut. Cp.
123) retraction Cp. 32) transit in \bar{c} Cp. 31
 \bar{i} et \bar{c} syll. breves a fine compof. 2. longa simplex
uon accent. ton. gadhana.

Infructus.

אָפְתַחְנִיכִי

vid. fol. 3, 36 anal. radice אָפְתַחְנִיכִי Cp. 53 lex. nom.
pler. plur. mascul. uon aff. \bar{c} perf. \bar{c} mase. sing. Cp. 89
rejecto \bar{c} Cp. 94) et \bar{c} jam in plurali transit in
 \bar{c} Cp. 71) formo אָפְתַחְנִיכִי nudo ex gal Cp. 105
utraque syll. longa \bar{i} affinis, 2. a fine comp. uon
accent. ton. geresch.

Fuer.

וְיָרַק

vid. fol. 134 anal. plur. mase. construct. mutato
 \bar{c} in \bar{c} Cp. 62) formo וְיָרַק nudo ex gal Cp. 46
utraque syll. longa, \bar{i} ab init. compof. 2. simplex
eun accent. ton. munakh.

74.

16. 1. 1770
17. 1. 1770
18. 1. 1770
19. 1. 1770
20. 1. 1770
21. 1. 1770
22. 1. 1770
23. 1. 1770
24. 1. 1770
25. 1. 1770
26. 1. 1770
27. 1. 1770
28. 1. 1770
29. 1. 1770
30. 1. 1770
31. 1. 1770
32. 1. 1770
33. 1. 1770
34. 1. 1770
35. 1. 1770
36. 1. 1770
37. 1. 1770
38. 1. 1770
39. 1. 1770
40. 1. 1770
41. 1. 1770
42. 1. 1770
43. 1. 1770
44. 1. 1770
45. 1. 1770
46. 1. 1770
47. 1. 1770
48. 1. 1770
49. 1. 1770
50. 1. 1770
51. 1. 1770
52. 1. 1770
53. 1. 1770
54. 1. 1770
55. 1. 1770
56. 1. 1770
57. 1. 1770
58. 1. 1770
59. 1. 1770
60. 1. 1770
61. 1. 1770
62. 1. 1770
63. 1. 1770
64. 1. 1770
65. 1. 1770
66. 1. 1770
67. 1. 1770
68. 1. 1770
69. 1. 1770
70. 1. 1770
71. 1. 1770
72. 1. 1770
73. 1. 1770
74. 1. 1770
75. 1. 1770
76. 1. 1770
77. 1. 1770
78. 1. 1770
79. 1. 1770
80. 1. 1770
81. 1. 1770
82. 1. 1770
83. 1. 1770
84. 1. 1770
85. 1. 1770
86. 1. 1770
87. 1. 1770
88. 1. 1770
89. 1. 1770
90. 1. 1770
91. 1. 1770
92. 1. 1770
93. 1. 1770
94. 1. 1770
95. 1. 1770
96. 1. 1770
97. 1. 1770
98. 1. 1770
99. 1. 1770
100. 1. 1770

בִּיתוֹ

vid. fol. 214 et seq. anal. cum af. 7 pers. 3. mafe.
 fing. Co. 88. utraque syll. longa simplex cum accent.
 fon. revia vi ult.

Octo.

שְׁמוֹנֶה

vide fol. 170 anal. fing. mafe. forme שְׁמוֹנֶה
 aucto ex gal Co. 46. ult. syll. longa simplex cum
 accent. fon. makh. sach.

Decem.

עֶשֶׂר

vid. fol. 172 anal. fing. mafe. forme עֶשֶׂר nudo
 ex gal Co. 48. utraque syll. longa, i simpl. 2 a fine
 compo. cum accent. fon. pafchta.

Tres.

וְיִרְדְּף עַד-הַיָּם

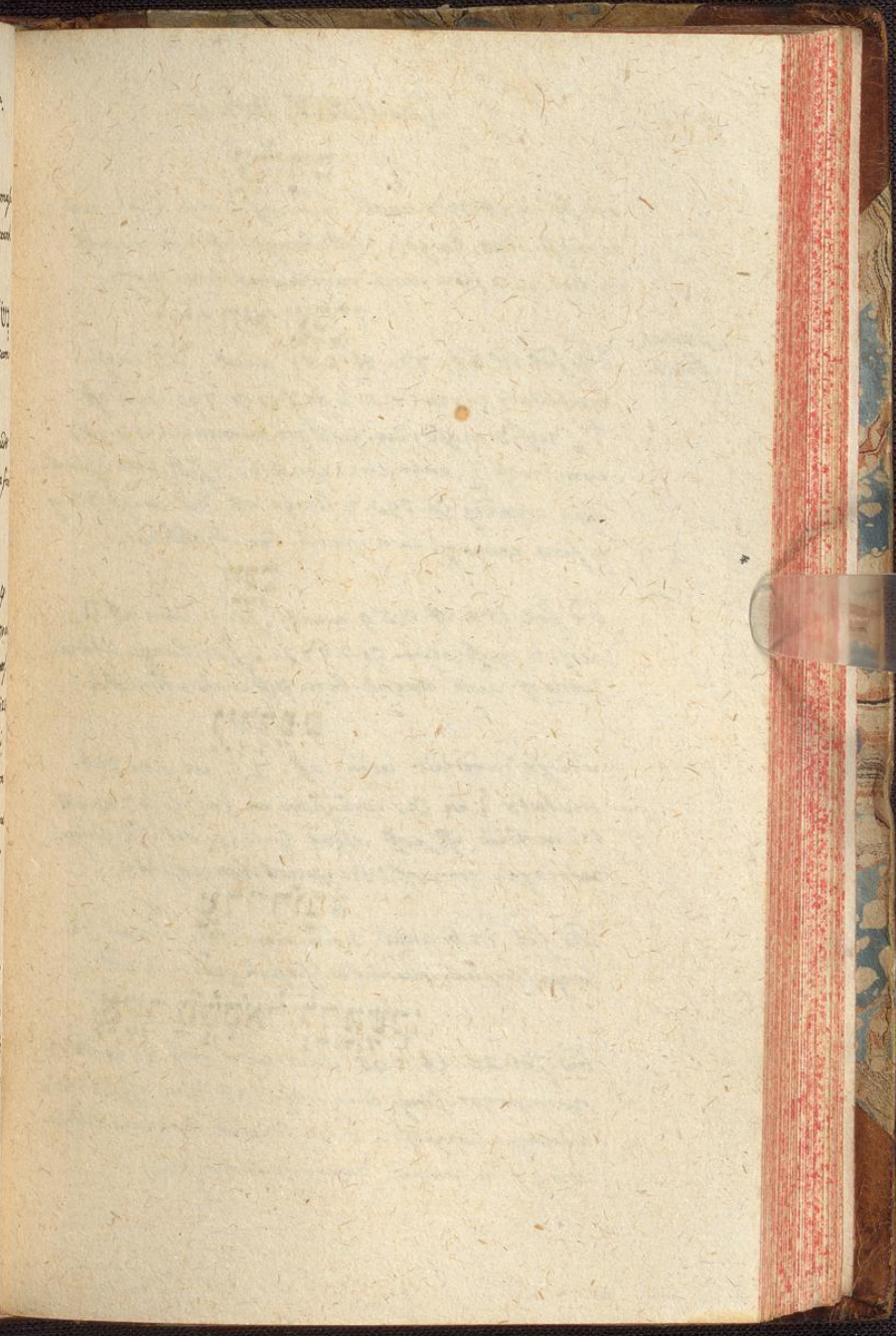
Secutus, qd. vid. fol. 167. fing. consto. unde (:) loco (7) Co.
 101) et prof. 7 ante (:) Co. 124. it. 168 et 170 anal.
 radix וְיִרְדְּף Co. 135 lex. 7 verb. plen. fut. fing. prof.
 3. mafe. in gal Co. 140 cum 7 convers. fut. Co. 125
 (:) quiescit, post breven Co. 23. cum seq. dagh. leni
 Co. 14. duo i syll. breves, 3 longa cum accent. fon.
 tiphtha, omne a fine compo. vid. it. fol. 126 anal.
 nom. propo. fing. syll. longa a fine compo. cum
 ae. diffinet. siluq. Versus is.

Divisit.

וַיַּחֲלֶק

radix וַיַּחֲלֶק Co. 51 lex. 7 anant, fut. fing. prof.
 3. mafe. in nishal Co. 140 varians. fon. Co. 148
 cum (:) sub iudform. compo. fat. dagh. fort. Co. 165.
 d.) cum prof. 7 convers. fut. Co. 123. i syll. bre-
 vis a fine compo. 2 longa simplex cum metheq
 Co. 385 3 longa simplex, 4 longa a fine compo.
 cum accent. fon. gadhma.

14-18.
prof. s. comp.
at ueruauu
7700
727
77
Loro (s. 24)
1684
had s. comp.
had s. comp.
had s. comp.
had s. comp.
had s. comp.
had s. comp.
had s. comp.
had s. comp.
had s. comp.
had s. comp.
had s. comp.
had s. comp.
had s. comp.
had s. comp.
had s. comp.



עֲלֵיהֶם

vid. fol. 8 et 363 anal. cum aff. const. עֲלֵיהֶם. res.
 3. mafi. plur. (p. 90), i syll. longa ab init. compof.
 2 brevis a fine compof. cum accent. ton. darga.

Servos
 suos.

לִילָה הוּא וְעַבְדֵּי

vid. fol. 16: 38. 77. et 287 anal. עֲבָדֵי. mafi.
 mutato i (:) in (-:) 2 in (ר:) (p. 74). cum aff.
 עֲבָדֵי. 3. mafi. sing. (p. 89), manente (ר:) (p. 95)
 cum prof. 7 ante (-:) (p. 123). i syll. brevis simpl.
 cum metheg (p. 39). 2 longa ab init. compof. 3 long.
 a fine compof. cum accent. ton. tsphhhia.

וַיִּשָׁם

vid. fol. 152 et 339 anal. וַיִּשָׁם. cum aff. וַיִּשָׁם.
 res. 3. mafi. plur. (p. 267). 2 syll. longa a fine
 compof. cum accent. ton. distinct. athnahh.

וַיִּרְדָּם

vid. fol. preced. cum aff. וַיִּרְדָּם. ut mox dicit.
 mutato } in (:) consensum ex (ר:) (p. 273). ult.
 (:) mobile est prof. aliud (p. 21). ult. syll. longa
 utrinque compof. cum accent. ton. pafakta.

עַרְבֵי-חֹבֶה

vid. fol. 126 anal. עַרְבֵי. nom. propr. sing. utraque syll.
 longa simplex, accent. ton. saqah gaton in ult.

אֲשֶׁר תִּשְׁמָאֵל לְדַמְטִיק:

vid. fol. 20. et 346 anal. cum prof. אֲשֶׁר (p. 121)
 nom. propr. sing. cum prof. אֲשֶׁר (p. 124) i syll. brevis
 utrinque compof. 2 longa simplex cum tone. 3 bre-
 vis a fine compof. accent. distinct. plug.

Versus 16.

וַיָּשָׁב

vid. fol. 238. form. ut isi in וַיָּשָׁב

אֵת כָּל-הַרְרֵי וְגַם אֶת-לְוַי אֲחֵיו וְרַכְשׁוֹ

vid. fol. 3. 43. 323. 366. cum prof. ה' ante gutt.

cp. 122. 106. 3. 36. 314. 136. 367 anal. cum

prof. ה' ante (1) cp. 124

Recurrit.

הַשִּׁיב

vid. fol. 238 anal. prof. sing. perf. 3. masc. in hi-
shil cp. 198 utraque syll. longa, i singul. 2. a fine
compos. cum accent. ton. sagitt. gaton.

וְגַם אֶת-הַרְרֵי וְאֶת-הָעֵם:

vid. fol. 106. 3. 36. 156. et 305 anal. cum

prof. ה' ante gutt. cp. 122 (-) ob accent. distinct.

transit in (1) cp. 37. syll. ut preced. verbo. accent.

distinct. filiq.

Versus 17.

Occurrit.

וַיֵּצֵא מִלֶּדֶה-סֶרֶס לְקִרְאָתוֹ

vid. fol. 74, 258. 290, 355. 378. et is anal.

nom. sing. form. cum aff. ה' perf. 3. masc. sing. cp. 88,

mutato ה' in ו cp. 94, forma צִדְקָה aucto ex

gal cp. 46, manente (1) cp. 95. 75, alkenon exci-

dit cp. 131 lex.) cum prof. ה' ante (1) cp. 124

quiescenti post breuem cp. 23. i syll. brevis a fine

compos. reliquo duo longo singul. accent. ton. se-
golta in ult.

אַחֲרַי שׁוּבוּ

vid. fol. 169. et 238 anal. infinit. v. g. (1) i

cum aff. ה' 3 perf. masc. sing. cp. 266. utraque syll.

longa singul. accent. ton. revia in ult.

מִתְהַפּוֹת

3.17.

אֲדָמָה
אֲדָמָה
אֲדָמָה

אֲדָמָה
אֲדָמָה
אֲדָמָה

אֲדָמָה
אֲדָמָה
אֲדָמָה

- (us. fon. in ult.)
- forte etiam a rad. אֲדָמָה (p. bob anal.)
conf. la. m. sin.

vid. fol. 152 anal. cum prof. ו, ante gutt. (p. 121)

אֶת-כִּדְרֵי עֵינֹר וְאֶת הַמַּלְכִים אֲשֶׁר אִתּוֹ

vid. fol. 3, 36. 355. 290, 359. 20. 209 et 219 an.

אֶל-עֵינֶיךָ שִׁיחַ הוּא עֵינֶיךָ הַמַּלְכִים:

vid. fol. 87. 358. 361. 77. 290 et 355 anal.

cum distinct. siluq.

Versus 18.

וּמַלְכֵי-עֶרֶק

nom. propr. sing. cum prof. ך ante ו (p. 124)

(:) qui est post breuem (p. 23) cum seq. dugh. lani

(p. 14). i et 3 syll. longa simpl. 2 brevis a fine comp.

maggah (p. 20) i syll. brevis simpl. cum acent.

ton. pashita. 2 brevis a fine comp.

וּמַלְכֵי שָׁלִים

vid. fol. 290, 355 anal. nom. propr. sing. utraq.

syll. longa, i simpl. 2 a fine comp. cum acent. ton.

laggah gaton.

הוֹצִיא

vid. fol. 74 anal. 1000. sing. perf. 3000. in hi-

phil (p. 198). utraq. syll. longa simpl. acent.

ton. hiphkha in ult.

לֶחֶם

Panis.

vid. fol. 356 anal. sing. com. forms מַלְכֵי מִדּוֹ

ex gal (p. 46.) utraq. syll. brevis, i simpl. cum

acent. ton. munnakh, 2 a fine comp.

Vinum.

vid. fol. 277 anal. cum prof. ך ante ton. (p. 122)

(-) ob acent. dist. alknakh transit in (7) (p. 37)

Duo i syll. longa simpl. tonus in penult. 3 bre-

vis a fine comp.

Sacerdos.

וְהוּא כֹהֵן

vid. fol. 77 anal. radix כֹהֵן (p. 69 lex.) sing.

17. 18.

guth
7
2
3
3

de
leg
is a
m

leg
m

na
s

7
m

de
i
a

de

masf. affol. formo חובל נודו ex gal (p. 48)
 utraque syll. longa, i. simplex, 2 a fine compos.
 uim accent. ton. tishhha.

Deus.

vid. fol. 32 anal. sing. masf. affol. formo ד
 נודו ex gal (p. 50) uim prof. ד Co. 129. syll. lon-
 ga utrinque compos. uim accent. ton. merecha.

Excelsus.

vid. fol. 257 anal. sing. masf. affol. formo
 חביון uim ex gal Co. 513. (-) quiescit, off breuen
 Co. 233. i. syll. brevis, 2 longa uim tonus, utraque
 a fine compos. accent. distinct. siluq.

Versus 19.

ויברכהו

vid. fol. 45 anal. uim off. ויברכהו perf. 3. masf. sing.
 Co. 266. 3, mutato (22 in (-) Co. 278) mobile
 off longam Co. 21. uim methaq Co. 292. 3. syll. longa
 ab init. long. uim accent. ton. tishhha. 2 a longa
 simplex

ויאמר

vid. fol. 11. anal. uim tonus in ult. uide ma-
 net (-) Co. 182. accent. distinct. athnahh.

ברוך

vid. fol. 45. form. ut ii b anal. in 777. acc.
 ton. jethiv.

Pepedit.

אברם ליאל עליון בנה

vid. fol. 314. 325 et supra anal. radix בנה
 Co. 131 lex. quiesc. בנה Co. 186. particip. sing. masf.
 benoni Co. 191. var. for. Co. 215. uim (-) ad
 form. quiesc. א. Co. 253 6. utraque syll. longa
 simplex, uim accent. ton. tishhha in ult.

8. 19.

al. (p. 48)

linea scripta

l. 1000

272. 1/2 l. 1000

mensura

off. 1000

id. 1000

no. 1000

8.

of. 1000

8) mensura

272. 1/2 l. 1000

no. 1000

l. 1000

mensura

777

8

mensura

no. 1000

l. 1000

mensura

no. 1000

l. 1000

mensura

fol. 100.

שְׁמֵי שָׁמַיִם וְאָרֶץ:

vid. fol. 4. et 5 anal. cum au. diffinit. siluq.

Versus 20.

Prolexit
Tradidit.

וְבָרָךְ אֱלֹהֵינוּ יְיָ שֶׁ-יְיָ

vid. fol. 45, 374. et 20 anal. radix יְיָ
lex. 2 defie. 2 lex. 2 230 2 84 lex. 2 verb. plen
mot. sing. ref. 3. mase. in piel (2. 170) i syll. brev.
2 longa cum acent. ton. mesocha, utraque a fine
comp.

צְרִיף

Hostia.

radix צְרִיף 2 12 6 lex. 2 plus. mase. uon aff.
7. ref. 2. mase. sing. 2 89 2 rejecto י. 2 97 2
manente utrobique (2 2 71 et 95) form. 2
nudo ex gal 2 50 2. 2 quiescit post (2 2 12)
i et 3 syll. longa simpl. 2 brevis simpl. cum au.
ton. hiphkha.

בִּירָה

vid. fol. 129 anal. cum aff. 7. ref. 2. mase.
sing. (2 88) uon (2 2) loco (2) ob acent. diff. attrahit.
2 34 2 uon post. 2 (2 124) i syll. longa ab uat.
compos. 2 brevis simpl. cum tono, 2 longa simpl.

didit.

וַיִּתֵּן

vid. fol. 39 anal. cum (2 2) loco (2 2) ob mag. sh
2 20) ult. syll. brevis a fine compos.

Decima.

לֹא נִתְעַשֶׂר הוּא בִּלְ:

vid. fol. 85. 172 sing. form. for. 2 חָעב auto
ex hiphil 2 48) i syll. brevis simpl. cum methaq
2 39 2 2 longa utriusque comp. uon au. ton. hiphkha.
it. 43, 57 et 83 anal. cum diff. siluq.

Versus 21.

וַיִּזְכֹּר יְיָ לְךָ סֶדֶם אֶל-אֲבָרָם הוּא-

19. 20. 21.

ישראל, ילדי

ישראל

עושה

לך

לך

לך

לך

לך

לך

לך

לך

לך

לך

לך

לך

לך

לך

לך

לך

לך

לך

לך

לך

לך

לך

Da. vid. fol. ii. 290, 355. 348. 87. 314. et 39 anal. inuerat. sing. maf. 2 perf. in gal sp. 190) var. for. sp. 213) mutato (. . .) sp. 251) in (. . .) ob magach sp. 203) syll. brevis a fine com. af.

לִי הַפֶּשֶׁשׁ וְהַרְכֵשׁ

vid. fol. iis. 41 cum prof. הַי sp. 122) .it. 323 et 366 anal. uon prof. הַי sp. 124) et הַי ante הַי sp. 122) (. . .) movetur post longam sp. 29) cum methug sp. 39) i syll. longa affinis comp.

קַח-לֶקֶח

vid. fol. 81, 339. 112, et 124 anal. uon diffinit. siluq.

Versus 22.

וַיֹּאמֶר אַבְרָם אֶל-יְיָ לֵאמֹר סֶדֶם הָרְחֹמֹתַי

vid. fol. ii. 314. 87. 290. 355. 348. et 228 anal. prof. sing. perf. i com. in hisp. sp. 198) variant. for. sp. 226) cum C. l. l. sp. 259) i syll. brevis, ab init. comp. uon methug intell. sp. 39) 2 longa simplex cum accent. for. gadhima. 3 longa simplex.

יָדַי

vid. fol. 129 anal. uon af. יָדַי perf. i. com. sing. sp. 88) .i. cot. ut l. c.

אֶל-יְהוָה אֱלֹהֵי עַלְיוֹן לָנָה שְׁמַיִם וָאָרֶץ:

vid. fol. 87. 64. 374. 4. et 5 anal. uon diff. siluq.

Versus 23.

אִם-נִגְחֹמֵי

vid. fol. 141 anal. it. נִגְחֹמֵי sp. 46) lex. non. contr. quies. וְנִי sp. 184) sing. maf. comp. formo וְנִי ex gal sp. 50) cum prof. וְנִי et methug

Filium

22. 25.

יְהוָה אֱלֹהֵינוּ
יְהוָה אֱלֹהֵינוּ
יְהוָה אֱלֹהֵינוּ

יְהוָה אֱלֹהֵינוּ
יְהוָה אֱלֹהֵינוּ
יְהוָה אֱלֹהֵינוּ

יְהוָה אֱלֹהֵינוּ

יְהוָה אֱלֹהֵינוּ
יְהוָה אֱלֹהֵינוּ
יְהוָה אֱלֹהֵינוּ

יְהוָה אֱלֹהֵינוּ

יְהוָה אֱלֹהֵינוּ
יְהוָה אֱלֹהֵינוּ

יְהוָה אֱלֹהֵינוּ
יְהוָה אֱלֹהֵינוּ

377.

Caput XIV. Vers. 23. 24.

intellect. ob. dagh. f. exid. q. 121 et 171 i syll. bre-
vis singul. ut dicit. 2 longa a fine compos. cum au. ton.
rashta.

ועד שרוף

Corrigia. vid. fol. 126 anal. rad. קָרִיָּה q. 154 lex.) nom.
plen. sing. mase. const. marante i q. 106.) form.
קרִיָּה nudo ex gal q. 46.) syll. longa utrinque compos.

alceus. rad. קָעַל q. 96 lex.) nom. plen. sing. form. absol.
formis קָחַשׁ nudo ex gal q. 46.) utraque syll.
brevis i singul. cum acent. ton. sagah gaton. 2 a
fine compos.

ואס-אנק

vid. fol. 141. et 81 anal. fut. sing. perf. i. com.
in gal q. 190.) utraque syll. brevis a fine compos.
acent. ton. tishkha inult.

נקל-אשר-לך ולא תאמר

vid. fol. 43, 83, 20, 112, 124. 65. et 11 anal.
fut. sing. perf. 2. mase. in gal q. 182.) i syll. longa
simplex, 2 brevis a fine compos. cum acent. ton.

Nitavit. sagah gaton. אֲנִי הַעֲשֶׂה פִּי

vid. fol. 207 anal. radix עֲשֶׂה q. 116 lex.)
verbum plen. rot. sing. perf. i. com. in hiphil q. 141.)
variant. for. q. 156.) cum l. n. loco (:) et (:))
loco (:) q. 164. a et 129.) (:) qui est perf. bra-
vem q. 23.) seq. dagh. leni q. 147 i syll. brevis
simplex cum metheg q. 39.) 2 brevis utrinque
compos. cum acc. ton. nerecha, 3 longa simplex.

את-אברם:

vid. fol. 3, 36. et 314 anal. i. cum distinct.
fileq.

Versus 24.

בְּלַעַל

Proter. vid. fol. i 26 anal. plur. mascul. abfol. unde (C),
 Cp. 106 lex. quod manet Cp. 713. loco D. ex
 forma syriaca (Cp. 56. C.) cum prof. 2 ante (C) Cp. 124)
 quiescenti post breuem Cp. 233, et 3 (Cp. 124) i syll.
 brevis a fine comp. uti et 3. cum accentu ton. revia,
 2 longa sing. lex.

Tantum.

modo. rad. רַקַּק (Cp. 139 lex.) def. Y Cp. 179) art. f. par.
 sing. Cp. 119) syll. brevis a fine comp. cum accent.
 ton. jethiv.

vid. fol. 20. et 83 anal. prof. plur. ref. 3. com.
 in gal Cp. 140. (C) mobile post longam Cp. 21) cum
 methaq Cp. 39) i syll. singul. 2 ab init. comp. cum
 accent. ton. murakh, utraque longa.

Puer.

radix בַּעַר Cp. 96 lex.) plur. mascul. abfol. a sing.
 נַעַר forma נַחַש nudo ex gal. Cp. 46) form. ut
 f. 2 82. i verb. cum prof. הֵי Cp. 122) (C) mobile
 sub dagh. forti Cp. 21) i syll. brevis a fine comp.

Fars.

rad. חַלַּק (Cp. 51 lex.) nom. plen. sing. maf.
 form. סַפַּר nudo ex gal Cp. 45) cum prof. ?
 Cp. 124) i syll. longa ab init. comp. cum accent. ton.
 rafekta, 2 brevis a fine comp.

vid. fol. 191, 339, 20. et 109 anal. form. ut
 syra in אַרְבָּא it. 209 anal. cum aff. C. prof.
 i com. sing. Cp. 88) accent. diffinit. athnakh.

nom. prof. viri, sing. utraque syll. longa, i

f. 24.

ab for uo de
Loro D. re
anda (13) p
C. 124) i f
accorde for

79) uel
con. cum

79) uel
gam Ca. 21
in the comp
ga.

de. alfor a
40) for
22) (3) m
is a fine

re. long
cum
cum

XVII
17
al for
of. C. 1
ut. ab
il. R. Long

simplex. 2 a fine compos. cum acc. ton. jafcht a.

אִשְׁכֵּל

nom. p. q. viri, sing. (:) quiescit 108 breven
 sp. 233 cum seq. dagh. lavi sp. 177 i syll. brev. 2 lon-
 ga cum accent. ton. muraht, utrag a fine comp.

וַיִּמְרָא הֵם יָקָחוּ

vid. fol. 354. 108. et 81 anal. fut. plur.
 perf. 3. mase. in gal sp. 191 variant. f. sp. 210
 dagh. f. ex ק excidit ob (:) subject. sp. 177 cum me-
 thag intell. compos. sp. 39. C:) mobile sub
 dagh. f. intell. sp. 217 i syll. brevis simplex cum
 meth. intell. sp. 177 2 longa ab init. compos. cum
 accent. ton. merschah

חֲלָקִים:

vid. fol. preced. cum aff. ח perf. 3. mase. plur.
 sp. 897 mutato (:) in C:) ex (-:) ob concus. sp.
 967 et C:) in C:) sp. 997 quiescit 108 breven sp.
 233 i syll. brevis, 2 longa cum tono, utrag a fi-
 ne compos. cum accent. diffind. siluq.

Caput XV.

Versus i.

אֶתְרֵי הַבְּרִים הָאֵלֶּה הֵיךְ רִבְרֵי-

vid. fol. 169, 283, 252, 300. Sz. 99. et 252
 anal. construct. sing. unde i (7) transit in C:)

2 in C-) sp. 101 i syll. brev. utrinque compos.

Vid.

הַיְהוָה אֵל-אֲבָרָם בְּפִתְחָהּ

vid. fol. 64. 87. et 314 anal. radix חָהּ
 sp. 47 lex. i nom. cont. quiesc. כָּהּ sp. 186 i, sing. mase.

absol. formo נִחְנַח אוּטו ex hiphil (p. 52) cum
nos. 2 loco וְ עֲרִיפִי (p. 125) tres syll. brevis, i
a fine comp. 2 sing. lex uon metheq (p. 39) 3 ab
init. comp. cum accent. ton. f. i. h. k. h. a.

Ne.

נִחְנַח אֵל

vid. fol. ii. et 83 anal. rādix אֵל (p. 9. lex.)
defic. V (p. 179) partio. sc. arat. sing. syll. brevis
a fine comp.

Timuit.

תִּירָא

vid. fol. 262 anal. fut. sing. perf. 2. mase. in
gal (p. 190) et 183) utraque syll. longa singl.
accent. ton. murahh in ult.

Clypeus.

אֲבָרְסָא נְכִיטִין

vid. fol. 314. et 112 anal. rādix נְכִיטִין (p. 31 lex.)
defic. V (p. 179) sing. mase. absol. form. prop. au-
cto ex hiphil (p. 50) utraque syll. longa, i. singl.
2 a fine comp. uon accent. ton. murahh.

Merces

לֶךְ שִׁכְרָה

vid. fol. 112, 124. rādix שִׁכְרָה (p. 146 lex.) non.
len. sing. mase. formo לֶךְ שִׁכְרָה uado ex gal (p. 48)
cum aff. לֶךְ; perf. 2. mase. sing. (p. 88) i (r) transit
in (r), marente alt. (p. 95) (r) mouetur softlon-
gam (p. 21) utraque syll. longa ab init. comp. osf.
accent. ton. f. i. h. k. h. a. in ult.

multu fuit.

רָבַח נִוָּאֵר

rādix רָבַח (p. 134 lex.) quiesc. רָבַח (p. 186) in-
finit. in hiphil (p. 199) (r) quiesc. soft breuem
p. 23) uon seq. dagh. leni (p. 14) i syll. brevis a
fine comp. 2 longa singl. uon acc. ton. merocha. it.
fol. 58 anal. uon diffinit. h. leq.

Versus 2.

V. Vers. i.
ex hichil Co. 22
S. 1 tra. 178. 180
mehay Co. 23, 180
Liphkha.
ואמר
דיע א"י
ארז-סנג. 178
ת
סנג. 178. 2. 180
ע. 178. 180
אברהם
דיע 178
סנג. 178. 180
מראה.
ת
Co. 178. 180
מראה
Co. 178. 180
מראה
ת
Co. 178. 180
מראה
סנג.
2.

324 Supplement.

iii.

Dominus.

וְאִמְרָא בְרוּם אֲרֹנִי
 vid. fol. ii. 314. radix אֲרֹנִי q̄ 2 lex. 3 quies.
 לֶה q̄. 186 3 sing. masc. forme אֲרֹנִי aucto ex gal
 q̄. 51 3 for compos. ex אֲרֹנִי et אֲרֹנִי, q̄. vide fol.
 127 anal. (י) mobile post (ד) q̄. 123. utraque syll.
 longa, i ab init. 2. a fine comp. cum au. ton. makh-
 rach.

יְהוָה

vid. fol. 64 anal. i syll. longa ab init. compos.
 2 brevis simplex cum accent. ton. rapheta.

Dare.

וְדָרֵךְ
 vid. fol. iis. et 39 anal. infinitiv gal q̄. 198
~~אֵלֶּיךָ לְבָרֵךְ לְבָרֵךְ לְבָרֵךְ~~ sed aucto ex gal q̄. 198
 satur i radical. eadem in alt. 31 q̄. 249. cc. 1
 et (.) ob magadh q̄. 203 migrat in (.) q̄. ibid. 3
 utraque syll. brevis a fine compos.

לֵי וְאֲנִי הוֹלֵךְ

vid. fol. iis. 112. et 109 anal. infin. in li-
 thil q̄. 199 3 utraque syll. longa, i simpl. 2 a
 fine compos. cum accent. ton. makh.

Sine liberis.

עָרִירָה
 radix עָרִירָה q̄. iis et iis lex. 3 defie. 3 q̄. 179 3
 sing. masc. forme pleno pros. aucto ex gal q̄. 471 3
 utraque syll. longa, i ab init. comp. 2. simpl. cum
 accent. ton. distinct. athnakh.

Disfluatio.

וְיָבֹן מִשְׁקָה
 vid. fol. 163, 184 anal. radix מִשְׁקָה q̄. 15 4 lex. 3
 nom. contr. defie. 3 q̄. 179 3 sing. masc. alt. fol.
 forme. utraque syll. brevis i simpl. cum accent.
 ton. makh, 2 a fine compos.

בְּיָמָיו

vid. fol. 215 anal. cum aff. 3. 3. pers. i. com. sing.

— cum punctis אלהים, cum *Id. Ebrdis*
pronunciare יהוה! haid fuerit licitum.

— fut. sing. masc. 2. pers. variant. for. sp.
207) cum *Id. Ebrdis* יהוה.

(p. 88). utraque syll. longa simplex. ra. ton. saqqh
gaton in ult.

הוא דְּקוֹשֶׁק אֶלֶי עֲזָרָה

vid. fol. 77. et 37i. resubito (:) acuto accent.
distinct. 2 syll. brevis simplex uen. accent. ton. ma-
recha. nom. prop. sing. i syll. longa ab init. comp.
2 brevis simpl. uen. ton. 3 brevis a fine compof.
uen. accent. distinct. siluq.

Versus 3.

Ecce.

וַיֵּאָמֶר אֲבָרָם הֵן

vid. fol. ii. 314. et 55 anal. demto הַפָּרָאָה.
et resubit. (:) syll. longa a fine comp. uen. accent.
ton. murakh.

לִי לֹא נִתְּתָה זֶרַע

vid. fol. 115. 65. 106, 114. et 28 anal. uen
(7) low (:) ob. accent. distinct. athrahk (p. 37)

Horedi-
facit.

וְהִנֵּה בֵּן בֵּיתִי יוֹרֵשׁ אֶתִּי

vid. fol. 55. 163, 184. 215. et 100 anal.
radix וְיֵרֵד (p. 67 la) quiesc. (p. 183) part.
benoni. sing. masc. (p. 191). utraque syll. longa
i simpl. 2 a fine compof. uen. accent. ton. me-
recha. it. 39. anal. uen. aff. (') res. i. com.
sing. (p. 88). uen. distinct. siluq.

Versus 4.

וְהִנֵּה דְבַר יְהוָה אֵלַי

vid. fol. 55. 252, 379. 64. 87. et 2. 12 anal.
uen. aff. (') res. 3. masc. sing. (p. 89).

לֹא טִיר לֹא יִרְשֶׁק

vid. fol. ii, 83. 65. et supra anal. sub. sing.

res. 3. masc. in gal Cp. 190, variant. for. Cp. 207, cum (-) loco (..) Cp. 183, ob (..) sub. prof. (ib. 4), quod dein ob aff. ה, res. 2. masc. sing. Cp. 265, transit in ער Cp. 277 et 278, cum methaq. Cp. 39, unde (:) mobile Cp. 21, i duo syll. longa simplex, 3 longa ab init. comp. cum accent. for. תִּפְחִלְיָהּ.

Viscera.

וְהָיָה אִם יֵאָשֶׁר יֵצֵא מִמֵּעֵיד

vid. fol. 166. 13. 141. 20. 74, 1255, dento prof. 7, radix וְעָה Cp. 88 lex. 7. quise. 7. ה Cp. 186, dual. masc. a sing. inest. וְעָה, forma רְעָה, hudo ex gal Cp. 51, 7. rejecto ה, Cp. 57, cum aff. ה, sing. masc. 2, res. (89) rejecto ו: Cp. 94, manente (..) Cp. 96, 7. cum prof. ו Cp. 121, (..) quise. ut aff. (..) Cp. 12, i syll. brevis a firmo comp. 2 longa simplex, ut et 4. 3 brevis simpl. cum accent. for. Joseph gaton.

וְהָיָה יִרְשָׁהּ

vid. fol. 77. et סדסד. anal. ob accent. dif. (:) transit in (..) Cp. 37, 3. syll. brevis simpl. cum tono, 4 longa simplex, accent. diffinit. siluq.

Versus s.

וְיֵצֵא

vid. fol. 74 anal. cum prof. 7 convers. fut. Cp. 123, Foras.

אֲתוֹ הַחוּצָה

vid. fol. 39, 83. et 203 anal. cum ה, locali Cp. 88 lex. 7. et prof. ה Cp. 122, cum methaq. Cp. 39, accent. ton. revia in penult. Cp. 39, 11).

Intuitus est.

וַיֵּאָמֶר הָדָט

vid. fol. 11 anal. radix וְבַט Cp. 90 lex. 7. defu.

19 (p. 178). imperat. sing. 2. pers. masc. in hiphil
cp. 198, mutato (:) in (:), ob magaph cp. 20.

נָא הַשְׁמִי'מָה

vid. fol. 330. et 5 anal. uon הַ לorali, uti
fol. 351 ult. vers. conuerso (:) sub י in (:), cp.
34 lex. quiesc. post breuem cp. 23) cum acent.
ton. saqqah gaton in penult.

numera-

וּסְפֵר

uit. vid. fol. 166 anal. imperat. sing. 2. pers. 2. masc.
in gal cp. 140) uon וּסְפֵר. וְ ante (:), cp. 124) mo-
bile post longam cp. 21).

הַמִּן כְּבִים אִם תִּתְּכֵל

vid. fol. 39. 121. et 343 anal. fut. sing. pers.
2. masc. in hiphil cp. 200)

לְסַפֵּר

vid. fol. 166. et mox supra. uon וּסְפֵר. וְ ante
(:) cp. 124) quiesc. post breuem cp. 23) cum
seq. dagh. leni cp. 14).

Sic.

אִתָּם וַיִּתְּכֵר לֹו כֹה

vid. fol. 39. 11. et 35 anal. rad. כֹּוה cp. 69
et 70 lex. וְ quiesc. הַה cp. 186) artii. separata
sing.

יְהִי זְרַעְהָ

vid. fol. 56. 28. et 326 anal. cum dif. siluq.

Credwit.

Versus 6.

וְהָאִמּוֹן

radix וְהָאִמּוֹן cp. 11 lex. וְ. pret. sing. pers. 3. masc.
in hiphil cp. 141) uon וְ. cp. 156) uon (:) sub
הַ ante (:), cp. 129) uon methag cp. 39) et pret.
! cp. 124) (:) est. deficiens cp. 74) igitur ult.
syll. longa utrinque composit. uon acent. ton.
fijshkha.

