

# **Badische Landesbibliothek Karlsruhe**

**Digitale Sammlung der Badischen Landesbibliothek Karlsruhe**

## **Preludes - Mus. Hs. 1278**

**Baumann, Ludwig**

**[S.I.]**

Violine

**urn:nbn:de:bsz:31-56492**

11 Minuten

Mus. No. 1278, viol.

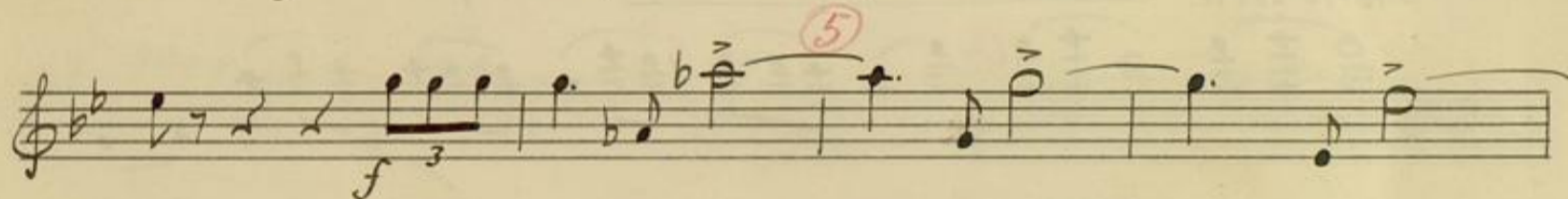
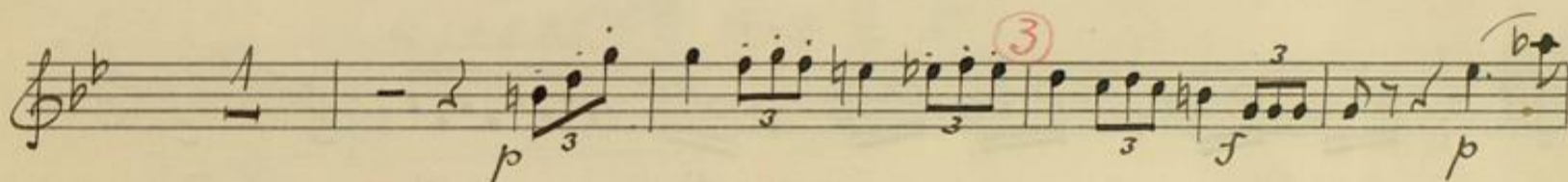
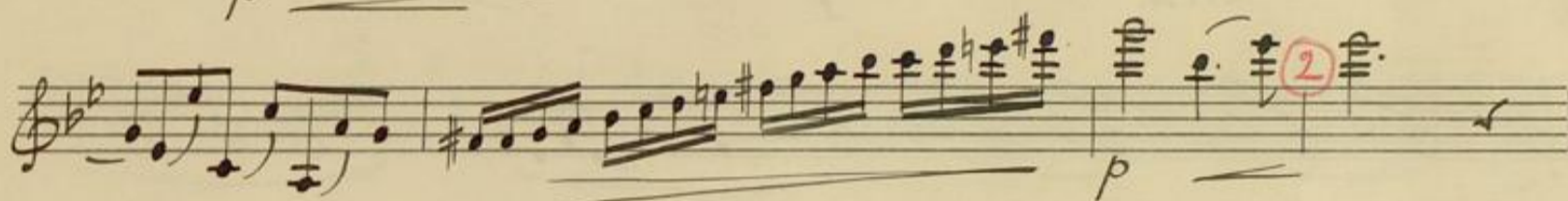
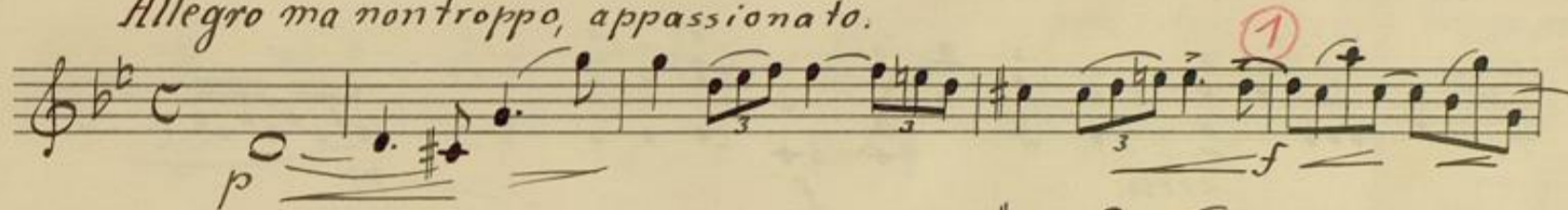
L. Baumann

# Violine

11 Minuten

## Praeludium

*Allegro ma nontropo, appassionato.*



V. S.





3

7

*p* *(cresc.)*

8

*mf* *cello*

10

*cresc.* *f* *pp*

11

12

13

*molto cresc.* *poco rit.* *a tempo* *p*

14

15

*Solo*

16

*pp*

18

*Plüsen*



Solo

19 *cresc. e accel.* *f*

20 *accel.*

21 *dim.* 22 *poco rit.* *Tempo primo*

23 *f*

24 *p*

25 *f* 26 *p* *f* *p* *f*

27 *p*

28 29 *cresc.*

30 *f* *p*

31 *cresc.* *f* 32 *p*



3

33 *p* *cresc. e string.* 34

*poco rit.* 35 *Tempo I.* *p*

36

37 *pp* *Solo*

38

39 40 *cresc. e string*

41 *tr* *f* *rit.*

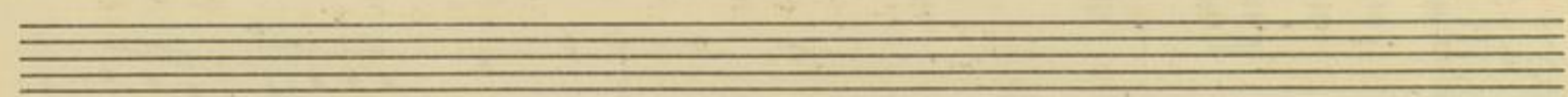
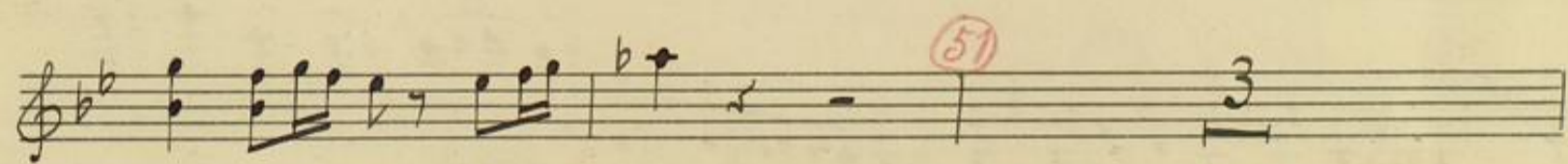
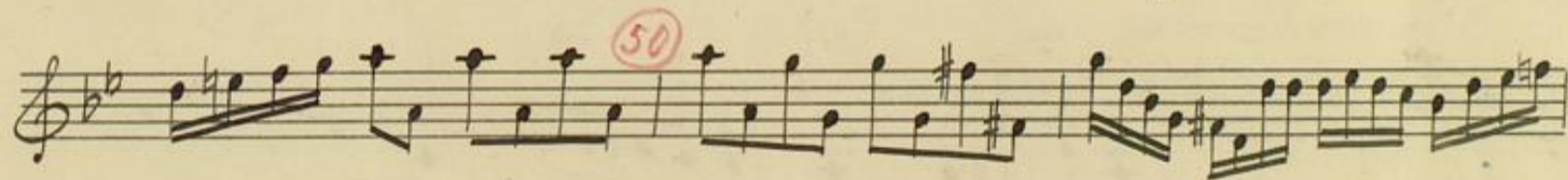
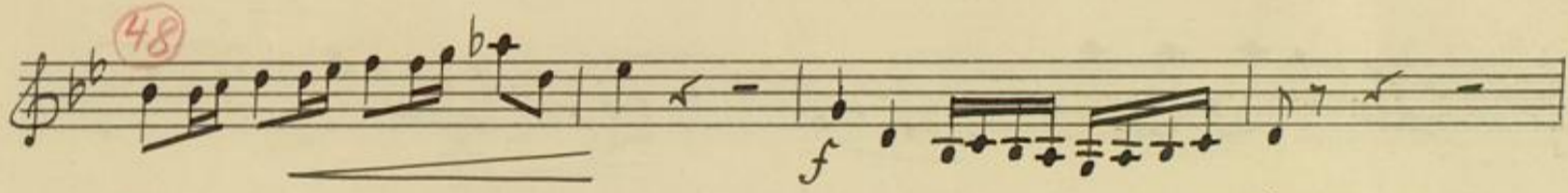
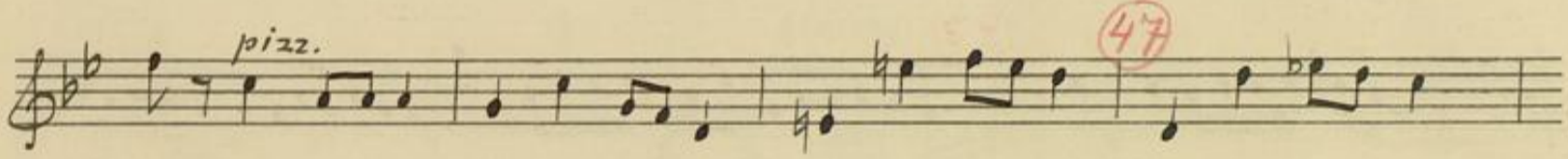
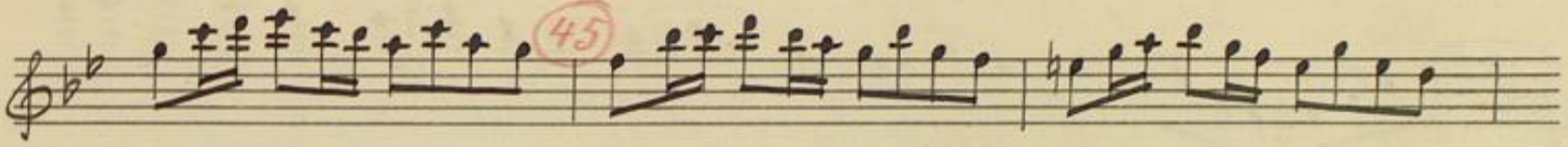
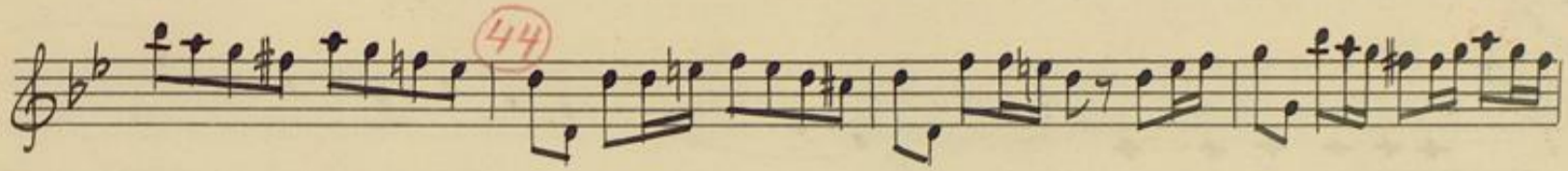
*ff* *rit*

42 *Largando.* *Fuga, non troppo, trionfante!*

43

10.





10



3

Handwritten musical score for violin, measures 52-61. The score is written on ten staves in G major (one sharp) and 3/4 time. Measure numbers 52 through 61 are circled in red. Dynamics include *pp*, *p*, *cresc.*, and *pp*. The notation includes various note values, rests, and articulation marks.



62

64

*pp*

65

*ff*

string

66

*con brio*

67

68

*rit.*

69

*müssen  
Vista.*

~~quasi Adagio.~~

~~70~~

~~a tempo, vivace.~~

~~p~~

~~f~~

~~pizz~~



2

quasi Adagio

a tempo

pp

70

71

p

f

72

p

accel

73