

# **Badische Landesbibliothek Karlsruhe**

**Digitale Sammlung der Badischen Landesbibliothek Karlsruhe**

## **Masses - Don Mus.Ms. 988**

**Kalivoda, Jan Křtitel Václav**

**[S.l.], 1860 (1860a)**

Fagott I

**urn:nbn:de:bsz:31-63767**

# Messe

von

J. W. Kalliwoda.

*Fagotto* *fmo.*

*Trill.*

*Allegretto.*

# Gloria.

*Allegro.* *fo:*

2.

*vala*

*po:*

14.

2.

16.

*Piu moto.* *fo:*

17.

Musical notation on a single staff, featuring a treble clef, a key signature of two sharps (F# and C#), and a 3/4 time signature. The melody consists of quarter and eighth notes.

*Allegro mod. to.*

*Credo* Musical notation on a single staff, featuring a bass clef, a key signature of two sharps, and a 3/4 time signature. The word "Credo" is written in a large, decorative script.

*2. mezz. for.*

Musical notation on a single staff, featuring a bass clef, a key signature of two sharps, and a 3/4 time signature. The notation includes various rhythmic values and slurs.

Musical notation on a single staff, featuring a bass clef, a key signature of two sharps, and a 3/4 time signature. The notation includes various rhythmic values and slurs.

Musical notation on a single staff, featuring a bass clef, a key signature of two sharps, and a 3/4 time signature. The notation includes various rhythmic values and slurs.

Musical notation on a single staff, featuring a bass clef, a key signature of two sharps, and a 3/4 time signature. The notation includes various rhythmic values and slurs.

Musical notation on a single staff, featuring a bass clef, a key signature of two sharps, and a 3/4 time signature. The notation includes various rhythmic values and slurs.

Musical notation on a single staff, featuring a bass clef, a key signature of two sharps, and a 3/4 time signature. The notation includes various rhythmic values and slurs.

Musical notation on a single staff, featuring a bass clef, a key signature of two sharps, and a 3/4 time signature. The notation includes various rhythmic values and slurs.

Musical notation on a single staff, featuring a bass clef, a key signature of two sharps, and a 3/4 time signature. The notation includes various rhythmic values and slurs.

*Et incarnatus.*

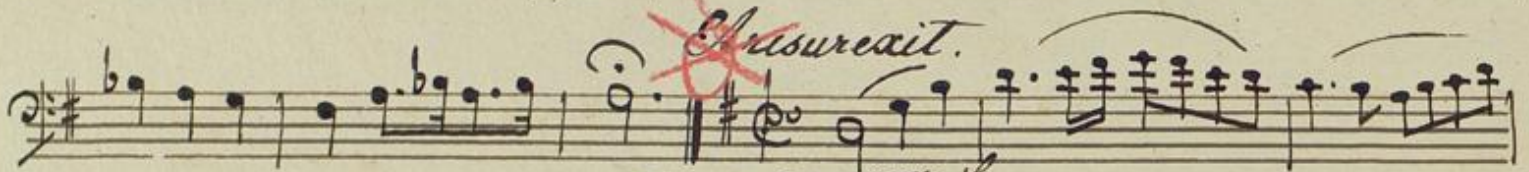
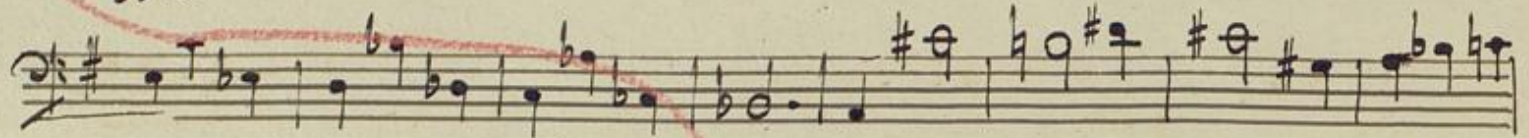
Musical notation on a single staff, featuring a treble clef, a key signature of two sharps, and a 3/4 time signature. The notation includes various rhythmic values and slurs.

*Adagio*

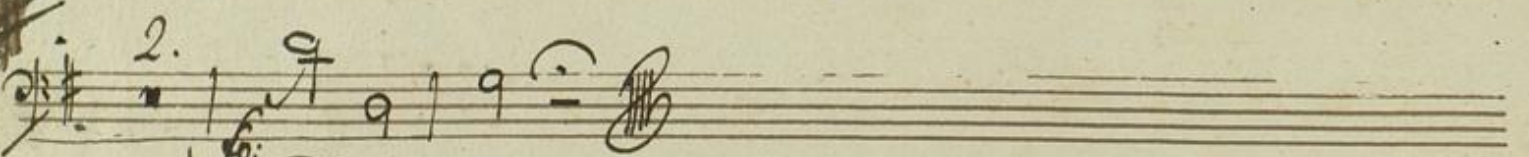
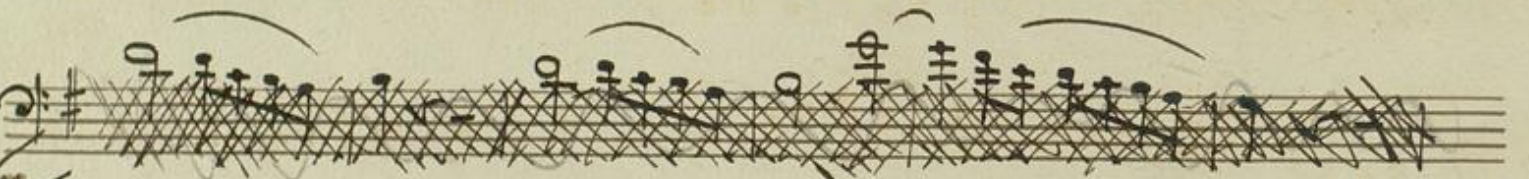
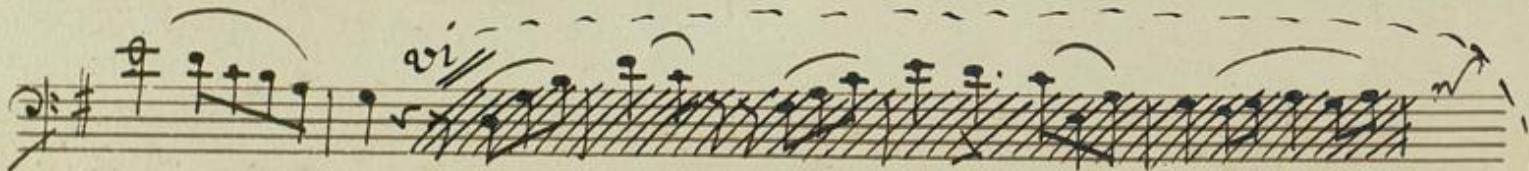
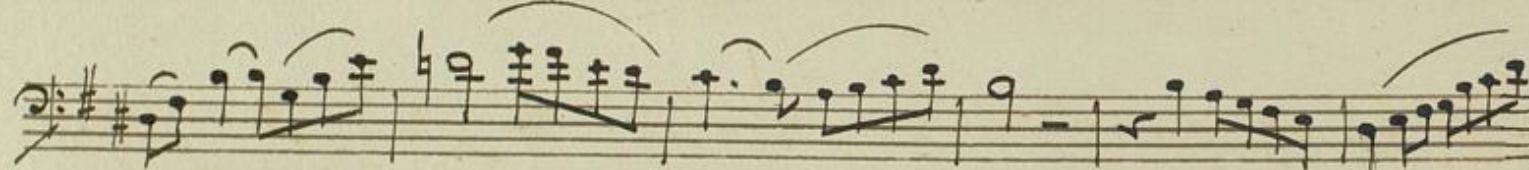
Musical notation on a single staff, featuring a bass clef, a key signature of two sharps, and a 3/4 time signature. The notation includes various rhythmic values and slurs.

10. ~~11.~~

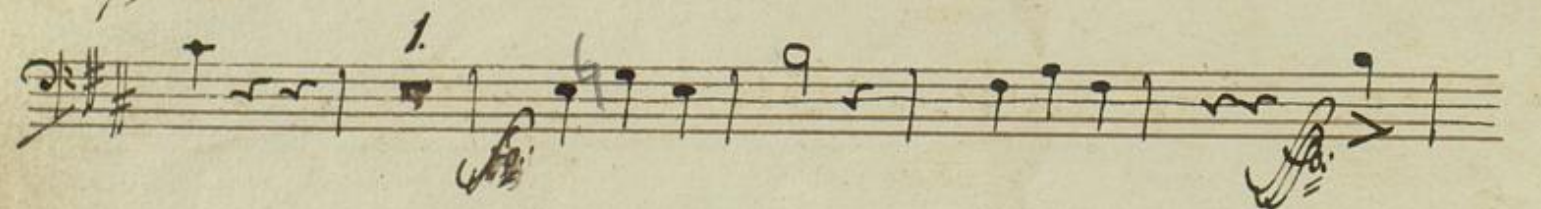
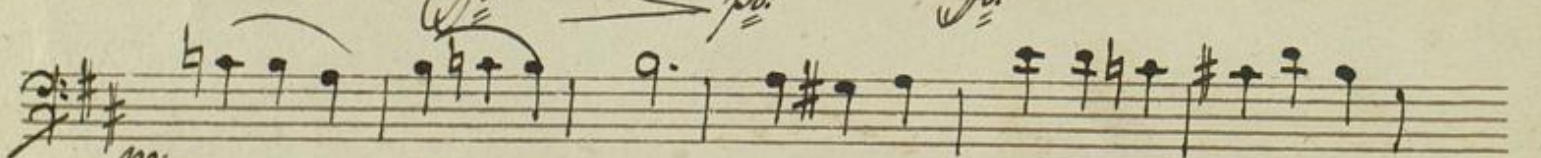
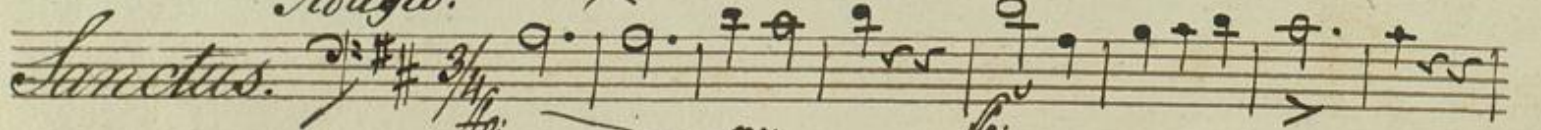
*Solo.*



*Tempo 1<sup>mo</sup> me<sup>te</sup> for.*



*Adagio.*



*Allro: mod<sup>to</sup>.*

Musical notation on two staves. The first staff begins with a treble clef, a key signature of one sharp (F#), and a 7/8 time signature. It contains a melodic line with notes and rests, including a fermata. The second staff contains a bass line with chords and single notes. Dynamics include *ff* and *ppp*. A red line is drawn across the staves.

Musical notation on a single staff with a treble clef, continuing the melodic line from the previous system.

Musical notation on a single staff with a treble clef, continuing the melodic line.

Musical notation on a single staff with a treble clef, continuing the melodic line.

Musical notation on a single staff with a treble clef, continuing the melodic line.

*Tacet Andante. Einlage.*

Musical notation on a single staff with a treble clef, key signature of two flats (Bb, Eb), and a 3/4 time signature. It begins with the word *Benedictus*. The notation includes a melodic line with notes and rests, and a dynamic marking of *ppp*.

Musical notation on a single staff with a treble clef, key signature of two flats, and a 3/4 time signature. It features a rhythmic pattern of eighth notes. A red circle is drawn around the first few notes, and a red 'X' is marked above the staff.

Musical notation on a single staff with a treble clef, key signature of two flats, and a 3/4 time signature. It continues the rhythmic pattern of eighth notes.

Musical notation on a single staff with a treble clef, key signature of two flats, and a 3/4 time signature. It features a melodic line with notes and rests.

Musical notation on a single staff with a treble clef, key signature of two flats, and a 3/4 time signature. It includes a triplet of eighth notes and a dynamic marking of *ppp*.

Musical notation on a single staff with a treble clef, key signature of two flats, and a 3/4 time signature. It features a melodic line with notes and rests, ending with a double bar line and a sharp sign (#).

# Agnus Dei.

*Adagio.*  $3/4$  15. *pp.*

2. *Allegro.* 16.

*pp.* 8. *Dona.*

3. *pp.*

16. *pp.*

2. *pp.*

3.



