

# **Badische Landesbibliothek Karlsruhe**

**Digitale Sammlung der Badischen Landesbibliothek Karlsruhe**

## **Billibambuffs Hochzeitsreise - Don Mus.Ms. 865a-b**

**Kalivoda, Jan Křtitel Václav**

**[S.l.], 1840 (1840)**

Bassposaune

**urn:nbn:de:bsz:31-63776**



No. 1: Ouverture: Narrenmusik von Schneckenfinger: 1

Mus. Nr. 865

*Trombone Bass:*

Moderato: 29. Solo

Handwritten musical notation on a five-line staff, featuring a treble clef, a key signature of one flat (B-flat), and a common time signature (C). The notation includes a double bar line, a dynamic marking of *f*, and several notes with accents.

Handwritten musical notation on a five-line staff, featuring a bass clef, a key signature of one flat, and a common time signature. It includes a double bar line, a dynamic marking of *f*, and a measure with a '9.' marking.

Handwritten musical notation on a five-line staff, featuring a treble clef, a key signature of one flat, and a common time signature. The tempo marking *Vivace* is present at the beginning.

Handwritten musical notation on a five-line staff, featuring a treble clef, a key signature of one flat, and a common time signature. It begins with a dynamic marking of *f*.

Handwritten musical notation on a five-line staff, featuring a treble clef, a key signature of one flat, and a common time signature. The notation consists of several whole notes.

Handwritten musical notation on a five-line staff, featuring a treble clef, a key signature of one flat, and a common time signature. It includes a dynamic marking of *f*.

Handwritten musical notation on a five-line staff, featuring a treble clef, a key signature of one flat, and a common time signature. It includes a dynamic marking of *f*.

Handwritten musical notation on a five-line staff, featuring a treble clef, a key signature of one flat, and a common time signature. It includes a dynamic marking of *f* and a measure with an '8.' marking.

Handwritten musical notation on a five-line staff, featuring a treble clef, a key signature of one flat, and a common time signature. It includes a dynamic marking of *f* and a measure with a '5.' marking.

Handwritten musical notation on a five-line staff, featuring a treble clef, a key signature of one flat, and a common time signature. It includes a dynamic marking of *f* and a measure with a '3.' marking.

Handwritten musical notation on a five-line staff, featuring a treble clef, a key signature of one flat, and a common time signature. It includes a dynamic marking of *f* and a measure with a '29.' marking.

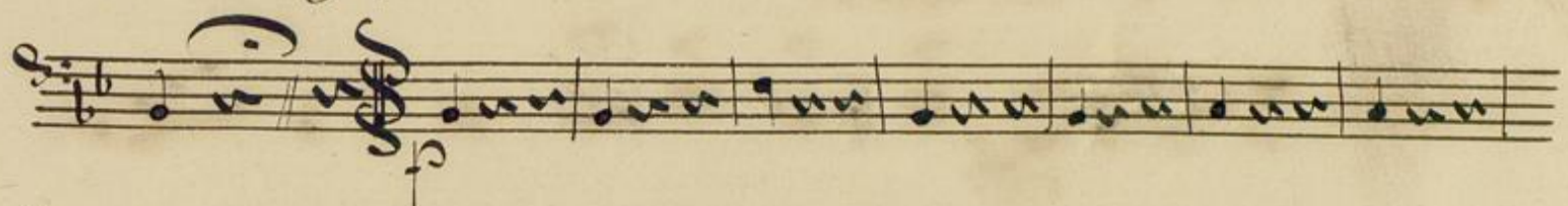


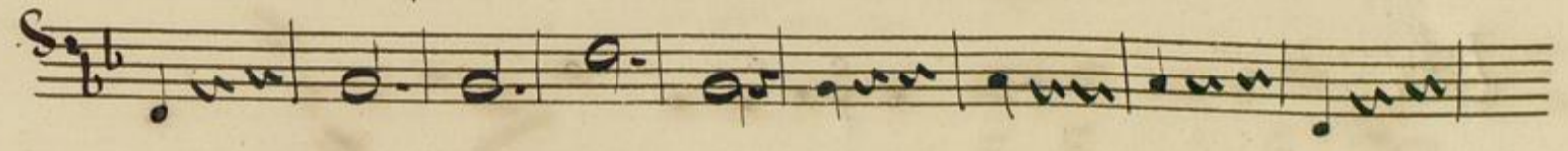
*Mor: 2: Sacet:*

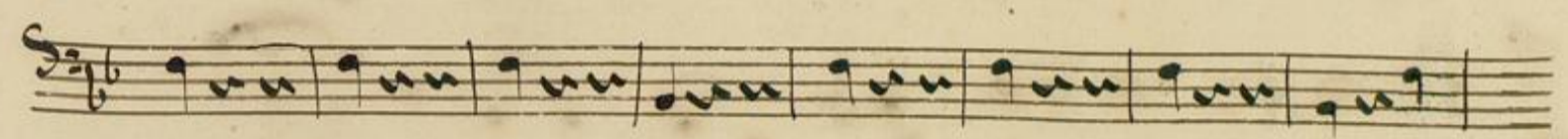


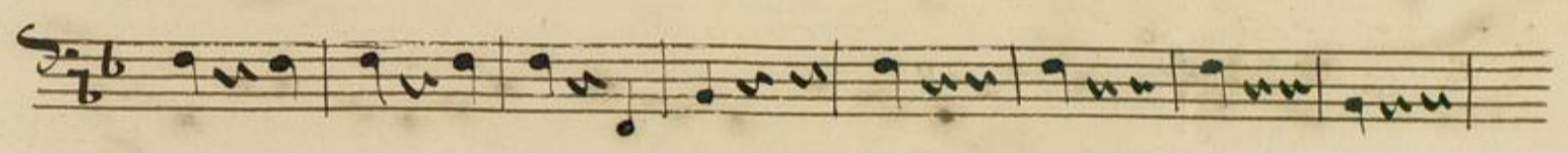
No. 3: Lied: aus C. dur,

*Allegro:* 

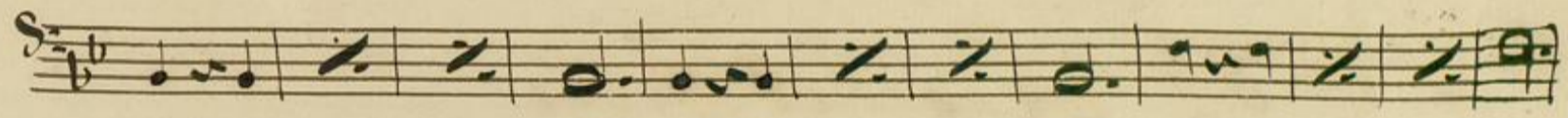


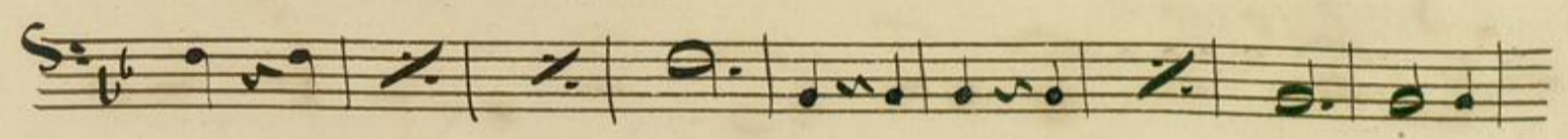


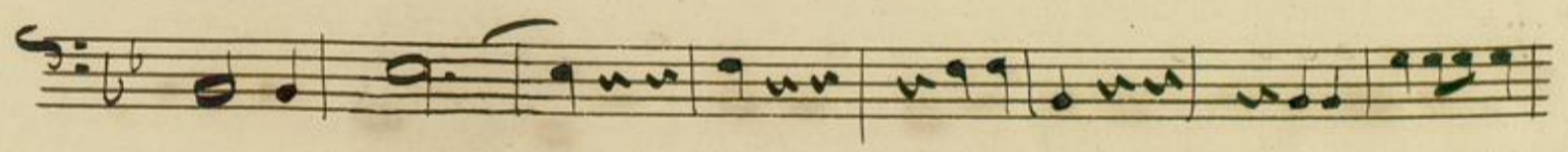






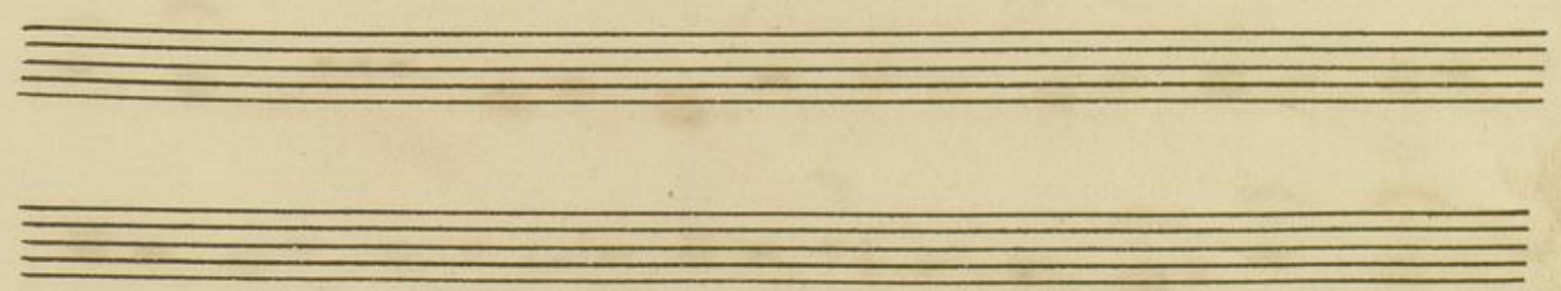








*2 mal Più Segno,*





Nor: 4: 5: 6: 7: Tacet:  
II<sup>a</sup> Mot:

Nor: 8: Entre Mot:

Musical notation for the first staff of the 'Entre Mot' section, featuring a treble clef, a key signature of two flats, and a common time signature. The notes are marked with accents (>).

Musical notation for the second staff of the 'Entre Mot' section, featuring a bass clef, a key signature of two flats, and a common time signature. The notes are marked with accents (>).

Musical notation for the third staff of the 'Entre Mot' section, featuring a treble clef, a key signature of two flats, and a common time signature. The notes are marked with accents (>).

Musical notation for the fourth staff of the 'Entre Mot' section, featuring a bass clef, a key signature of two flats, and a common time signature. The notes are marked with accents (>).

Musical notation for the fifth staff of the 'Entre Mot' section, featuring a treble clef, a key signature of two flats, and a common time signature. The notes are marked with accents (>).

Nor 8 $\frac{1}{2}$  Anochel Scene

Musical notation for the first staff of the 'Anochel Scene' section, featuring a treble clef, a key signature of two flats, and a common time signature. The tempo marking 'Maestoso' is present. The notes are marked with accents (>).

Musical notation for the second staff of the 'Anochel Scene' section, featuring a bass clef, a key signature of two flats, and a common time signature. The notes are marked with accents (>).

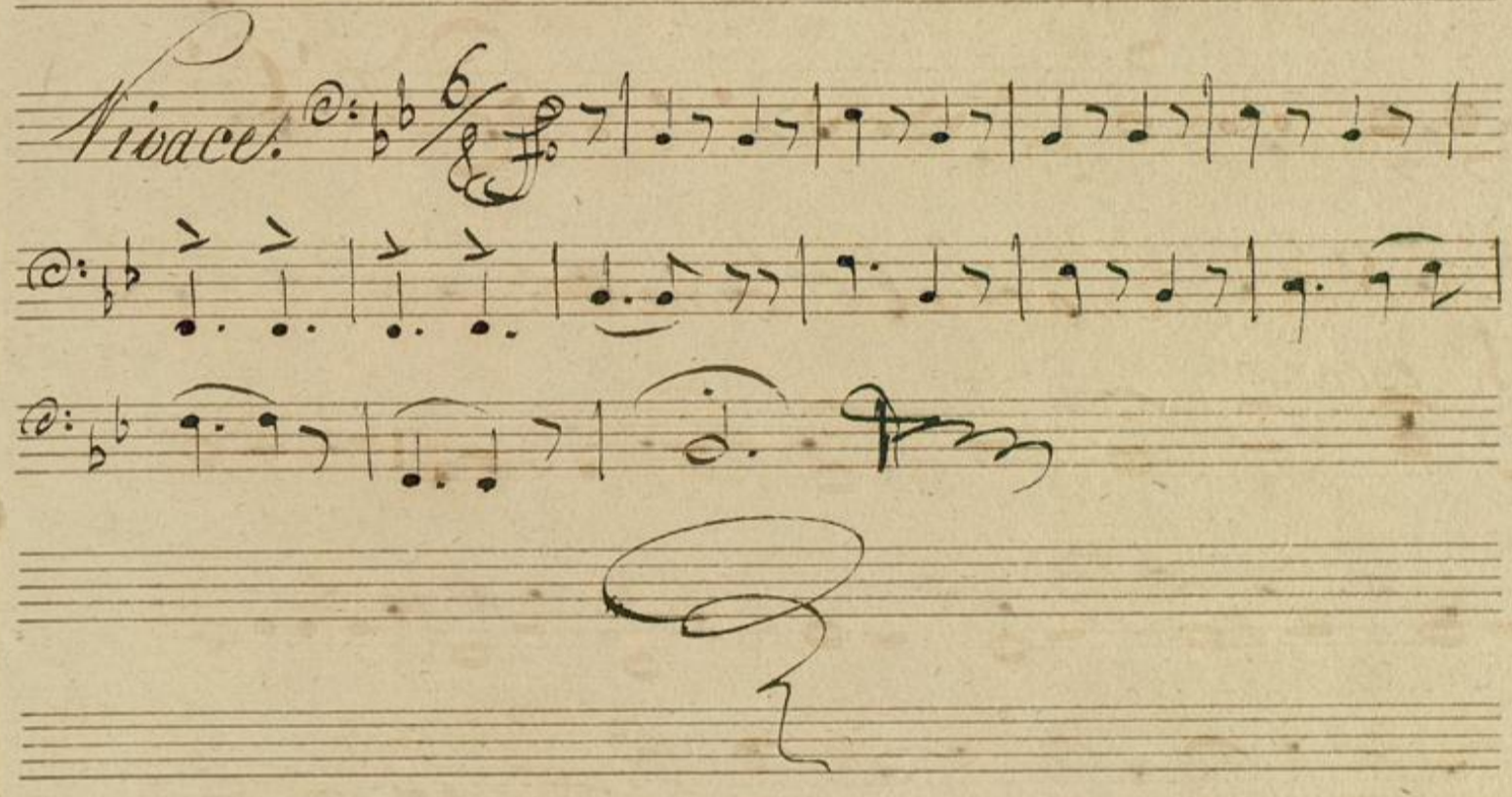
Musical notation for the third staff of the 'Anochel Scene' section, featuring a treble clef, a key signature of two flats, and a common time signature. The notes are marked with accents (>).

Musical notation for the fourth staff of the 'Anochel Scene' section, featuring a bass clef, a key signature of two flats, and a common time signature. The notes are marked with accents (>).

Musical notation for the fifth staff of the 'Anochel Scene' section, featuring a treble clef, a key signature of two flats, and a common time signature. The notes are marked with accents (>).



Schlusswort  
No 11.

*Vivace.* 



*Trombone di Basso.*

*N<sup>mo</sup> 10. Allegro.*  $\frac{2}{4}$

6.

2.

2.

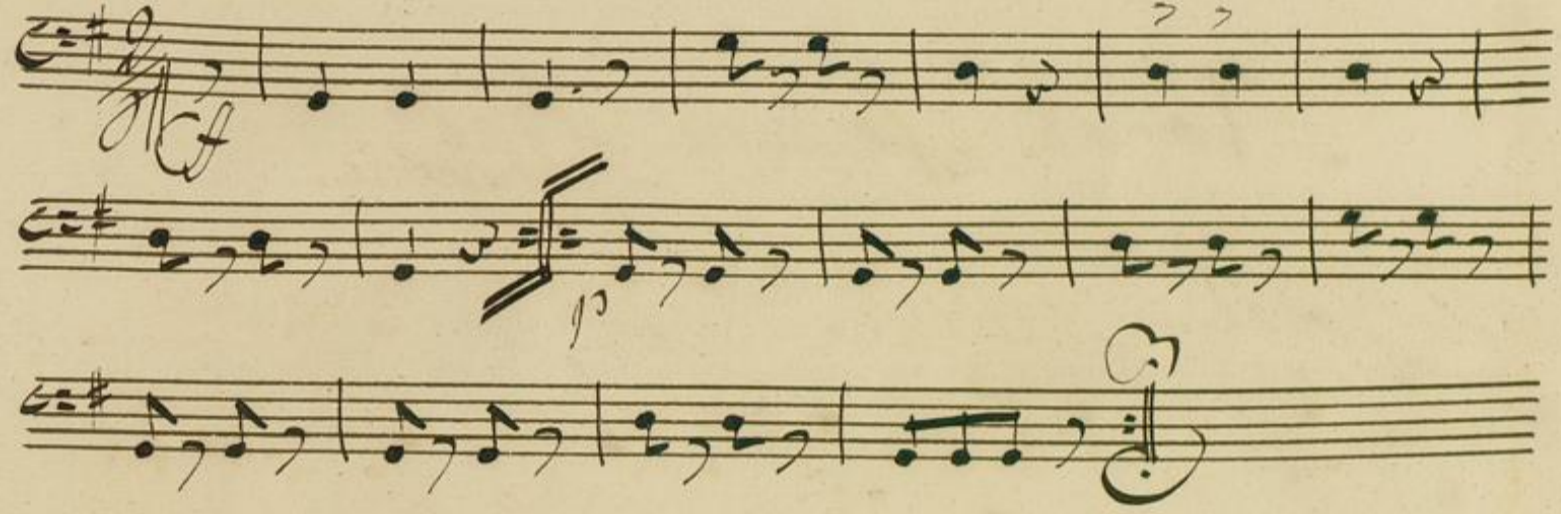
2.





*Nor: 9: ~~10~~: 11: 12 Sacet.*

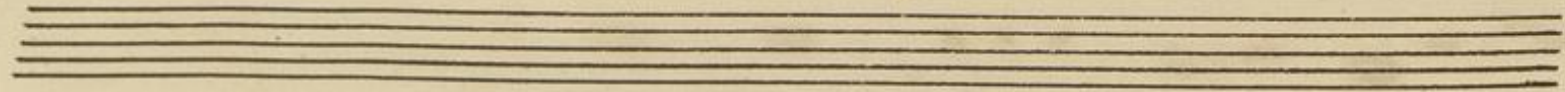
*Nor: 13: Narenmarsch*



*Nor 13 1/2 Chor:*





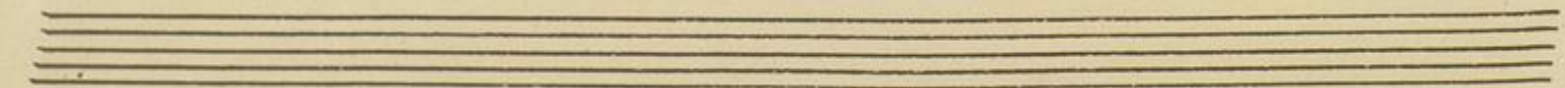


No: 14. Saect:

No: 15. Jerum Walzer:

Walzer

Galopp: Saect:



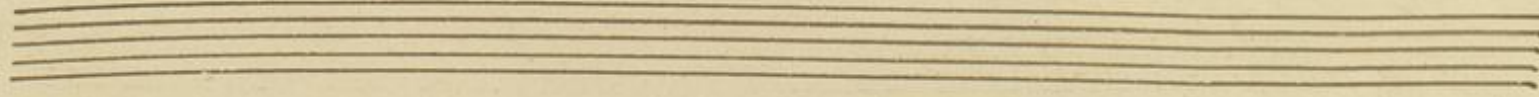
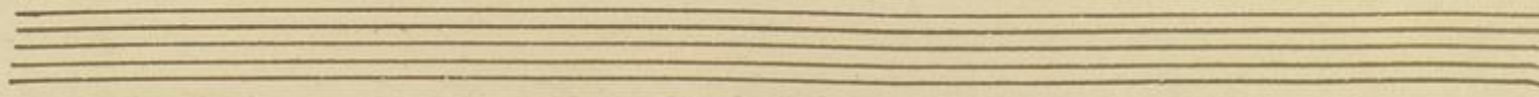


Nor. 16. Schlußgesang.

Allo: Vivace

for

Fine





A page of ten blank musical staves, each consisting of five horizontal lines. The staves are arranged vertically down the page. The paper is aged and yellowed, with some faint smudges and a small stain on the right side of the third staff.