

Badische Landesbibliothek Karlsruhe

Digitale Sammlung der Badischen Landesbibliothek Karlsruhe

Variations pour hautbois avec orchestre

Hummel, Johann Nepomuk

Leipzig, [ca. 1825]

Oboe (prinzipal)

urn:nbn:de:bsz:31-67188

Druck 1476

VARIATIONS

pour Hautbois

AVEC ORCHESTRE

Composés et Dedicés à Son Ami

MONSIEUR W. CZERNOWENCKY

à St. Petersbourg

PAR

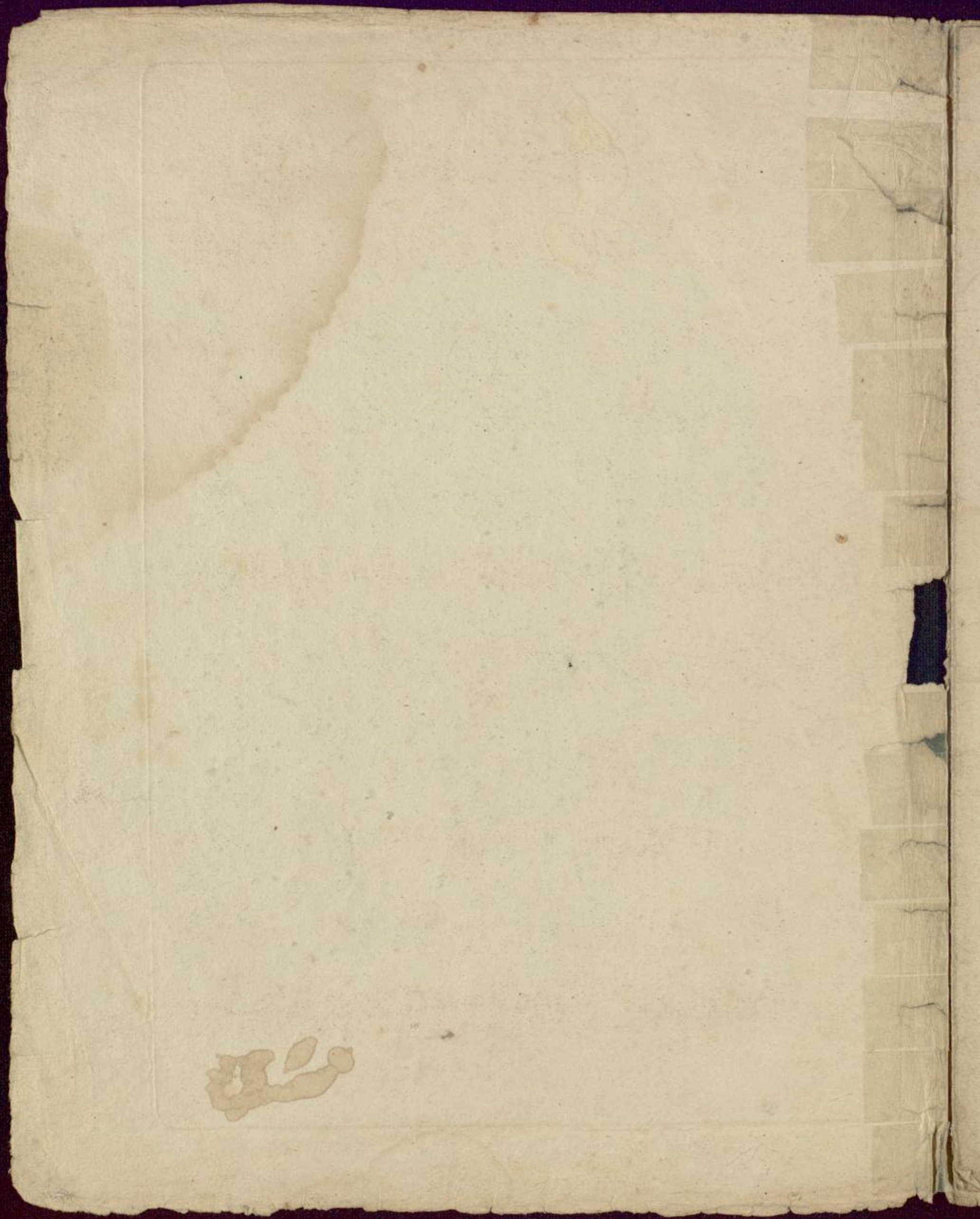
J. N. HUMMEL

Maitre de Chapelle de la Cour Gr. Duc. de Weimar.

Couv. 102. Propriété de l'Éditeur. Prix 1. 16 gr.

LEIPZIG

au Bureau de Musique de C. F. Peters.



OBOE PRINCIPALE

Adagio. *Viol. 1^{mo}*

Ob: Solo.

dol.

espressivo.

cres.

Allegretto.

Tema. *Solo.*

Tutti. 7 *Solo*

Tutti. 7

4
OBOE PRINCIPALE

Var. 1. Solo. *p*

p

I. *cres.* II. *cres.* Tutti. 7

Var. 2. Solo. *f*

f

f *f*

p

Tutti. 7

Cantabile ed un poco sostenuto.
Solo. *p*

f *p* *f* *p*

p *calando.* Tutti. 11 *con fuoco.*



OBOE PRINCIPALE

Var. 4. *Solo*

The musical score for Oboe Principal, Variation 4, is written in G major and 2/4 time. It consists of 12 staves of music. The first staff is marked 'Solo' and begins with a treble clef and a common time signature. The music is characterized by rapid sixteenth-note passages and slurs. The second staff continues the melodic line. The third staff features a key signature change to G major. The fourth staff includes a dynamic marking of *f*. The fifth staff has a dynamic marking of *p*. The sixth staff is marked 'Tutti.' and includes a dynamic marking of *ff*. The seventh staff is marked 'Solo' and includes a dynamic marking of *pp* and the instruction 'espress:'. The eighth staff has dynamic markings of *f* and *pp*. The ninth staff has dynamic markings of *f* and *p*. The tenth staff is marked 'cantabile.' and includes a dynamic marking of *f*. The eleventh and twelfth staves continue the melodic line with various dynamics and phrasing.

O BOE PRINCIPALE

The musical score for Oboe Principal on page 6 contains the following elements:

- Staff 1:** Starts with a forte (*f*) dynamic and a melodic line.
- Staff 2:** Continues the melodic line with a forte (*f*) dynamic.
- Staff 3:** Features a *Tutti* section followed by a *Solo* section starting with a piano (*p*) dynamic.
- Staff 4:** Includes the instruction *cres. cen. do.* and dynamics *f*, *p*, and *p* *ca. lan. do e. rallen. tan. do.*
- Staff 5:** Marked *a tempo* with a piano (*pp*) dynamic.
- Staff 6:** Features a *Tutti* section followed by a *Solo* section starting with a forte (*f*) dynamic.
- Staff 7:** Includes the instruction *calando* and a piano (*p*) dynamic.
- Staff 8:** Marked *Tempo di Walze non troppo Presto.* with a *Solo* section and a piano (*p*) dynamic.
- Staff 9:** Features a *Tutti* section (7) followed by a *Solo* section with dynamics *p*, *p*, *sf*, and *p*.
- Staff 10:** Includes the instruction *Alternativo. 1.* and a *Tutti* section (7) with dynamics *sf* and *p*.
- Staff 11:** Continues the melodic line with a piano (*p*) dynamic.
- Staff 12:** Continues the melodic line with a piano (*p*) dynamic.

OBOE PRINCIPALE

Tutti. 7 Solo. Alternativo. 2

p

sf *p*

sf

Tutti

Solo.

sf *sf* *p* *cres.*

FINE

F. F. Heftbibliothek
Donaueschingen

