

Badische Landesbibliothek Karlsruhe

Digitale Sammlung der Badischen Landesbibliothek Karlsruhe

Régine - Don Mus.Ms. 4a-c

Adam, Adolphe

[S.l.], 1850-1899 (19.2d)

Nr. 7 1/2. Allegro.

urn:nbn:de:bsz:31-70126

No 7 1/2

Violino 2^{do}

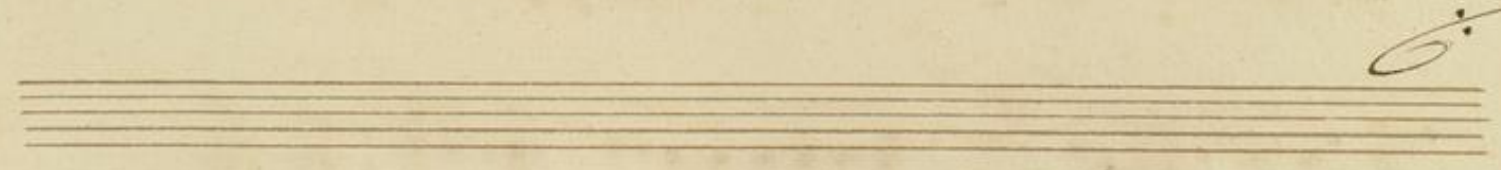
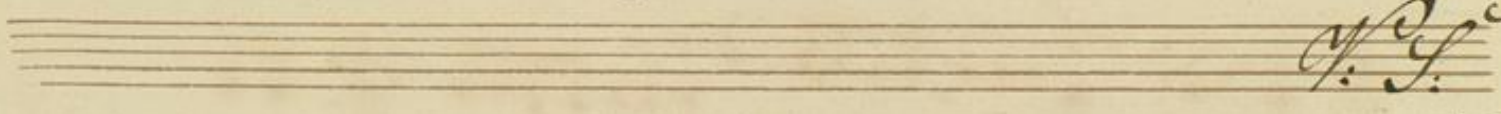
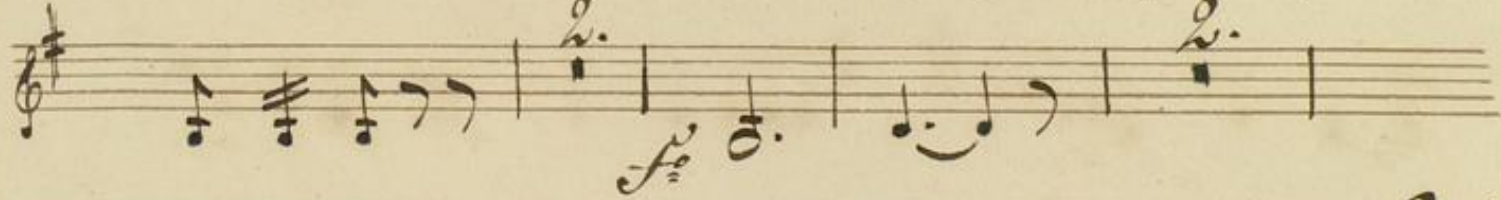
Finlayn zur Oper Regine

~~J. W. W. Wallmoden~~

Allegro.

Handwritten musical score for Violino 2do, Op. 7 1/2, 'Finlayn zur Oper Regine' by J.W.W. Wallmoden. The score is in G major and 6/8 time, marked 'Allegro.' It consists of 12 staves of music. The first staff has a '2.' marking above it. The second staff has a '4^{do}' marking below it. The third staff has a 'f' marking below it. The fourth staff has a '4^{do}' marking below it. The fifth staff has '1.', '2.', '3.', and '4.' markings above it. The twelfth staff has a 'ritar.' marking above it. The score ends with a fermata and a flourish.

A handwritten musical score on 14 staves, likely for a string instrument. The notation includes treble clefs, a key signature of one sharp (F#), and a 3/4 time signature. The score features a variety of rhythmic patterns, including eighth and sixteenth notes, and rests. There are several dynamic markings and performance instructions: *pizz.* (pizzicato) appears on the 7th and 8th staves, and *arco.* (arco) appears on the 8th staff. The notation is written in dark ink on aged, slightly yellowed paper.



W. J. G.

Handwritten musical score on 12 staves. The score is in G major (one sharp) and 3/4 time. It features various musical notations including treble clefs, notes, rests, and dynamic markings such as *f* and *ff*. A section starting on the 7th staff is marked *molto vivace* and *diminu = en = do.*

This page contains a handwritten musical score on ten staves. The notation includes various rhythmic values, rests, and dynamic markings. The first staff begins with a treble clef and a key signature of one sharp (F#). Above the first staff, the instruction *cres. = cen =* is written. The second staff features a *ff* marking and a triplet of eighth notes. The third staff has a *f* marking. The fourth staff includes a *pizz.* marking. The fifth staff has a *arco.* marking above it. The sixth staff has a *cres. = cen =* marking below it. The seventh staff has a *ff* marking below it. The eighth staff has a *ff* marking below it. The ninth staff has a *ff* marking below it. The tenth staff ends with a double bar line and a fermata over a long note.

A page of ten blank musical staves, each consisting of five horizontal lines, arranged vertically on aged paper. The staves are evenly spaced and occupy most of the page's width and height. The paper has a yellowish, aged appearance with some minor foxing and faint, illegible markings scattered across the surface.