

Badische Landesbibliothek Karlsruhe

Digitale Sammlung der Badischen Landesbibliothek Karlsruhe

Régine - Don Mus.Ms. 4a-c

Adam, Adolphe

[S.l.], 1850-1899 (19.2d)

Nr. 1. Introduction. Allegro.

urn:nbn:de:bsz:31-70126

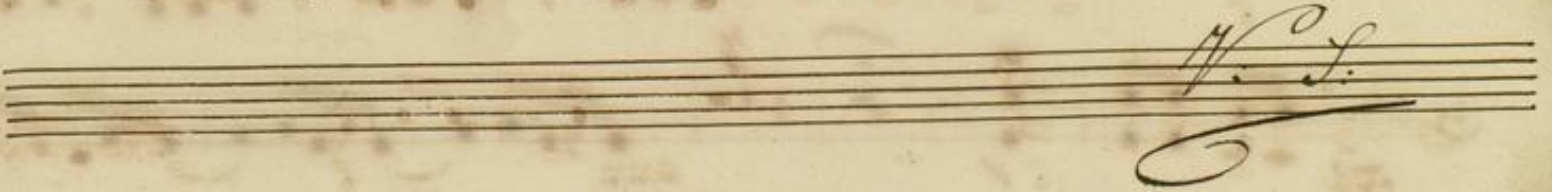
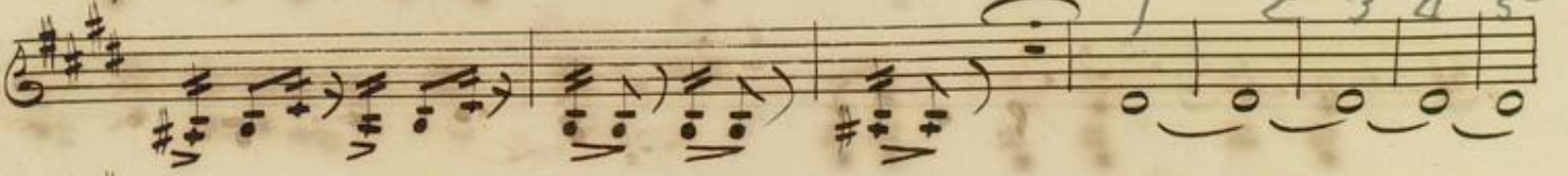
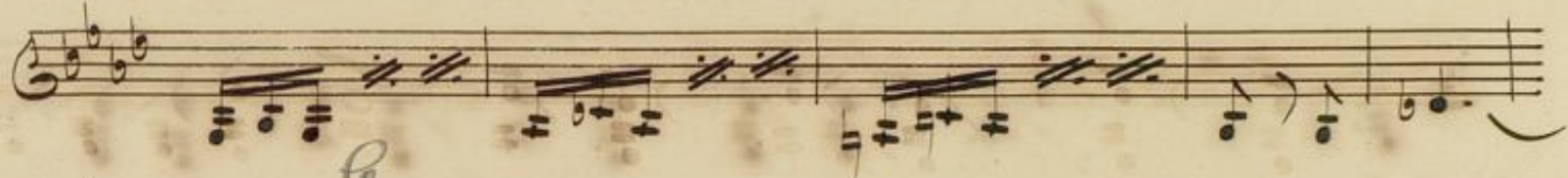
N^o 1. Introduction.

All^o. Slac^o.

The first section of the introduction is written for a single melodic line on a treble clef staff. It begins with a *ppp* dynamic marking. The music consists of a series of eighth and sixteenth notes, often beamed together, with some slurs. The key signature has one sharp (F#). The section concludes with a *cresc.* (crescendo) marking followed by a *dim.* (diminuendo) marking.

Andante.

The second section of the introduction is written for a single melodic line on a treble clef staff. It begins with a *ppp* dynamic marking. The tempo is marked *Andante*. The music features a mix of eighth and sixteenth notes, with some slurs and a first ending bracket. The key signature has one sharp (F#). The section concludes with a *ppp* dynamic marking, a *arco.* (arco) marking, and the instruction *animez un peu* (animate a little).



tremolo.

1.

pizz.

arco.

pizz.

ppp. cresc.

arco.

ppp. cresc.

ppp.

2.

3.

4.

ppp.

Handwritten musical score for a string instrument, consisting of ten staves of music. The notation includes various rhythmic values, slurs, and articulation marks. The first staff begins with a treble clef and a key signature of one sharp (F#). The music is written in a single system across ten staves. The final staff of the piece includes the instruction "arco." and a fermata over a final note.

N. J. No. 2.