

Badische Landesbibliothek Karlsruhe

Digitale Sammlung der Badischen Landesbibliothek Karlsruhe

Partitas - Don Mus.Ms. 421

Feldmayr, Georg

[S.l.], 1790 (1790c)

Oboe II

urn:nbn:de:bsz:31-71395

Man Ms. 4 21

Oboe II.

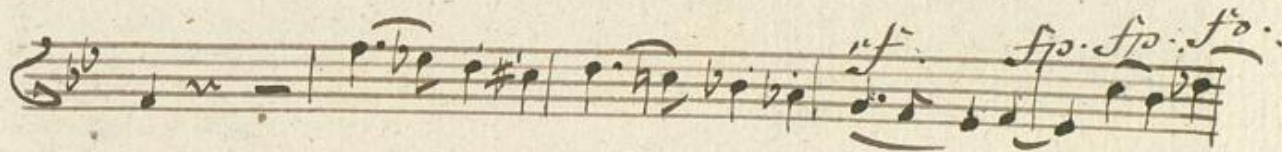
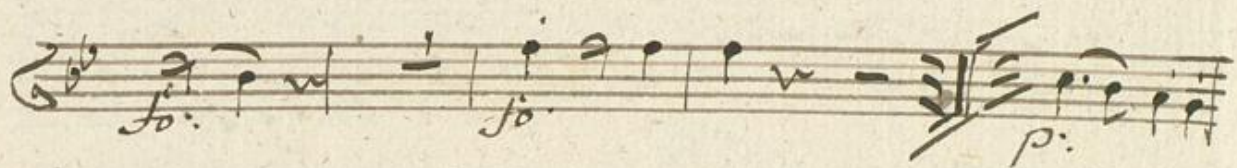
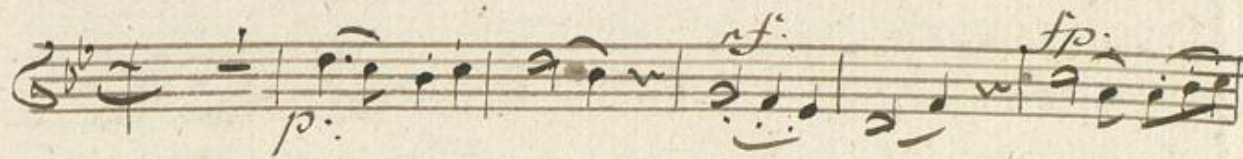
The image shows ten horizontal musical staves, each consisting of five lines. They are arranged vertically down the page. The staves are currently blank, with no musical notation or clefs. The paper is aged and slightly yellowed.

Oboe II.

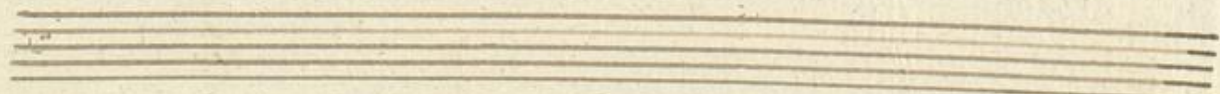
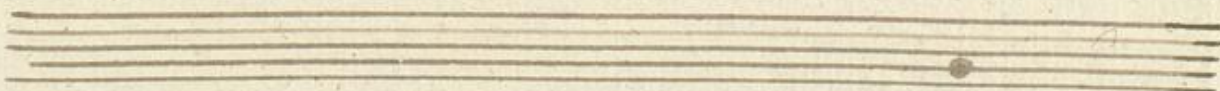
N. I.

Marche Fresco

Trio.



Marche Da Capo.



No. III

Allegretto

Vivace

Handwritten musical notation on a single staff, starting with a treble clef and a 2/4 time signature. It includes dynamic markings such as *mf* and *f*.

Handwritten musical notation on a single staff, continuing the piece with various rhythmic patterns and dynamic markings.

Handwritten musical notation on a single staff, featuring a *fo* dynamic marking and ending with a *fine* marking.

Handwritten musical notation on a single staff, starting with a *fo* dynamic marking.

Handwritten musical notation on a single staff, including *cres* and *fo* dynamic markings.

Handwritten musical notation on a single staff, featuring a *fo* dynamic marking.

Handwritten musical notation on a single staff, concluding with the instruction *Dal Segno Sino al fine*.

Handwritten musical notation on a single staff, including *fo* and *ffo* dynamic markings.

Handwritten musical notation on a single staff, including *mf*, *cresc.*, and *p* dynamic markings.

Handwritten musical notation on a single staff, concluding with the instruction *Dal Segno Sino al fine*.

N. IV.

Menuetto.

Trio I.

Menuet Da Capo.

Trio II.

Handwritten musical notation for Trio II, consisting of four staves. The first staff begins with a treble clef and a common time signature. It contains notes with dynamic markings *p: rf:* and *fo:*. The second staff starts with a *Tu* marking and includes a double bar line. The third staff features a *f:* marking and a *tutti* marking above the notes. The fourth staff concludes with a *tutti* marking and a double bar line.

Da Capo Menuetto.

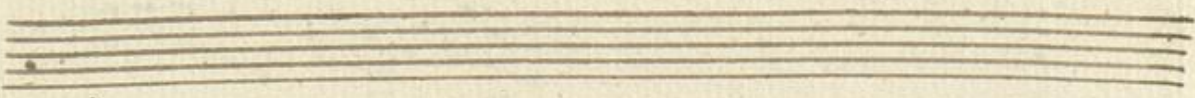
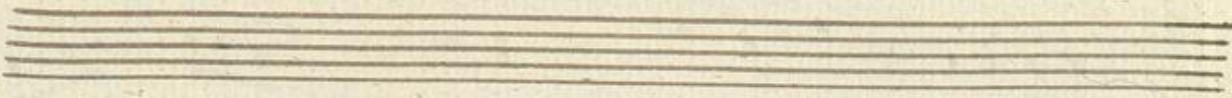
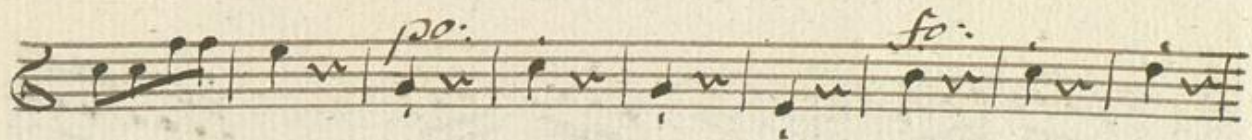
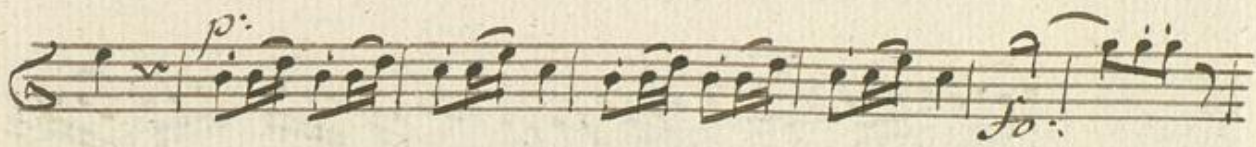
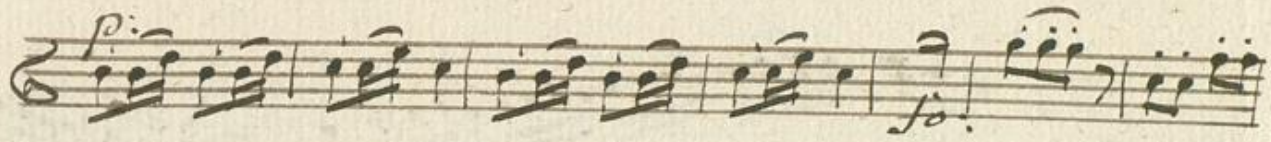
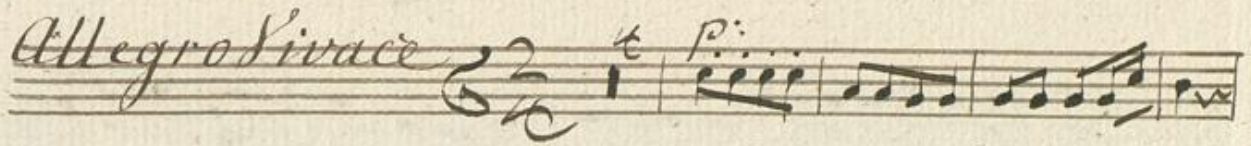
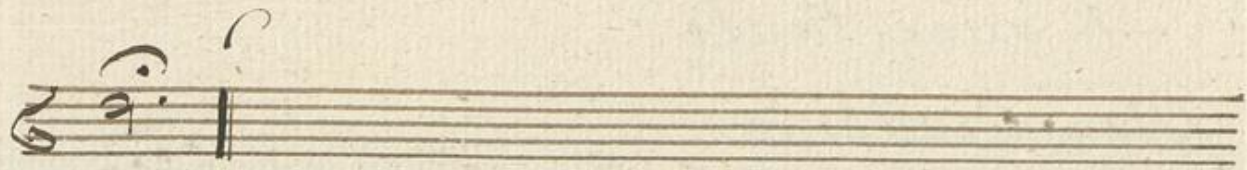
Four empty musical staves, each consisting of five horizontal lines, intended for the *Da Capo Menuetto* section.

N. V.

Allegretto

alla Pastorella.

Come Adagio.



Concertante

Allegro con brío.

f.

p. f.

f.

f.

f.

f.

f.

p. f.

cresc.

f.

Handwritten musical notation on a single staff, featuring a treble clef, a key signature of one flat, and a 3/4 time signature. The notation includes various note values, rests, and dynamic markings such as *p.* and *f.*

Handwritten musical notation on a single staff, featuring a treble clef, a key signature of one flat, and a 3/4 time signature. The notation includes various note values, rests, and dynamic markings such as *p.* and *f.*

Handwritten musical notation on a single staff, featuring a treble clef, a key signature of one flat, and a 3/4 time signature. The notation includes various note values, rests, and dynamic markings such as *p.* and *f.*

Handwritten musical notation on a single staff, featuring a treble clef, a key signature of one flat, and a 3/4 time signature. The notation includes various note values, rests, and dynamic markings such as *f.*

Handwritten musical notation on a single staff, featuring a treble clef, a key signature of one flat, and a 3/4 time signature. The notation includes various note values, rests, and dynamic markings such as *fo.*

Handwritten musical notation on a single staff, featuring a treble clef, a key signature of one flat, and a 3/4 time signature. The notation includes various note values, rests, and dynamic markings such as *fo.*

Handwritten musical notation on a single staff, featuring a treble clef, a key signature of one flat, and a 3/4 time signature. The notation includes various note values, rests, and dynamic markings such as *p. f.*

Handwritten musical notation on a single staff, featuring a treble clef, a key signature of one flat, and a 3/4 time signature. The notation includes various note values, rests, and dynamic markings such as *sp.* and *f.*

Handwritten musical notation on a single staff, featuring a treble clef, a key signature of one flat, and a 3/4 time signature. The notation includes various note values, rests, and dynamic markings such as *6* and *Solite*.

Two empty musical staves at the bottom of the page.

f.

cresc. + *fo.*

p.

fp. *fo.* *f.*

f.

p. *f.*

Handwritten musical score on five staves. The notation includes treble clefs, a key signature of one sharp (F#), and a common time signature (C). The first staff begins with a treble clef, a sharp sign, and a common time signature. The music features various note values, including eighth and sixteenth notes, and rests. Dynamic markings include *f.* (forte) and *p. f.* (piano forte). The second staff has *p. f.* at the beginning and *f.* later. The third staff continues the melodic line. The fourth staff includes the dynamic marking *f. cresc. fo.* (forte crescendo fortissimo). The fifth staff concludes the piece with a double bar line and repeat dots.

Six empty musical staves, each consisting of five horizontal lines, arranged vertically below the first five staves.

The image shows ten horizontal musical staves, each consisting of five parallel lines. The staves are arranged vertically down the page. The paper is aged and yellowed, with several brownish stains, most notably a large one in the middle. There is no musical notation or other markings on the staves.