

Badische Landesbibliothek Karlsruhe

Digitale Sammlung der Badischen Landesbibliothek Karlsruhe

Accurrite populi - Don Mus.Ms. 117

Heckler, Fortunata

[S.l.], 1713 (1713)

Orgel (beziffert)

urn:nbn:de:bsz:31-72120

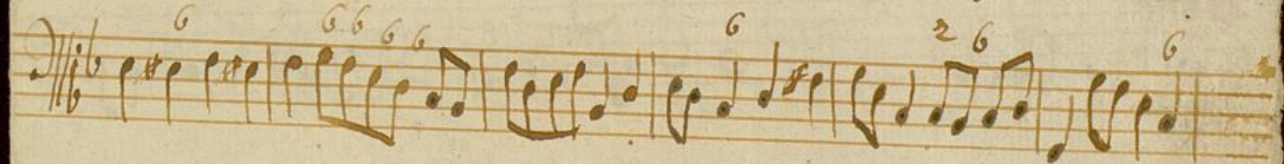
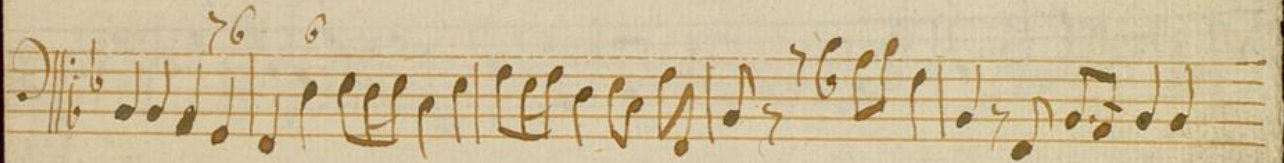
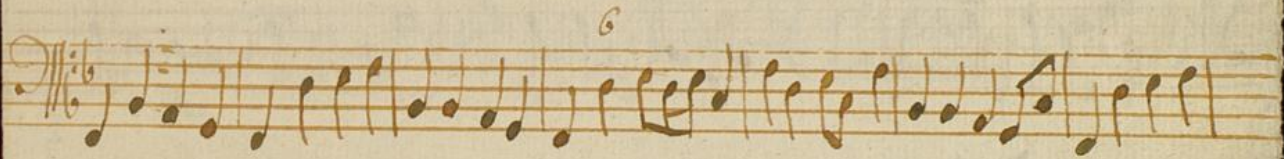
Sonata

virgano

Mus. Ms. 147



Accorvile



Handwritten musical score on eight staves. The notation includes various rhythmic values, accidentals, and performance markings. Annotations include:

- Staff 1: $6 \# 66$ above the staff.
- Staff 2: 66 above the staff.
- Staff 3: 4 above the staff.
- Staff 4: 2 above the staff.
- Staff 5: $\#$ above the staff.
- Staff 6: $\#$ above the staff.
- Staff 7: $\#$ above the staff.
- Staff 8: 2 above the staff.

The word *gravius* is written above the eighth staff.

A page of handwritten musical notation on eight staves. The notation is in brown ink on aged, yellowish paper. The music is written in a system with a treble clef and a key signature of one flat (B-flat). The notation includes various note values, rests, and articulation marks. Above the fifth staff, there is a sequence of six '6' characters. Above the sixth staff, there is a '6' character. Above the seventh staff, there is a '6' character. Above the eighth staff, there is a '6' character. The paper shows signs of wear, including some staining and a small tear at the bottom edge.

Musical notation on a five-line staff, featuring a treble clef, a key signature of one flat (B-flat), and a 2/4 time signature. The notation includes various note values such as quarter, eighth, and sixteenth notes, along with rests and bar lines.

Musical notation on a five-line staff, continuing the piece with similar note values and clef/signature as the first staff.

Fragment of musical notation on a five-line staff, showing a treble clef and a key signature of one flat.

Fragment of musical notation on a five-line staff, showing a treble clef and a key signature of one flat.

Fragment of musical notation on a five-line staff, showing a treble clef and a key signature of one flat.

Fragment of musical notation on a five-line staff, showing a treble clef and a key signature of one flat.

Fragment of musical notation on a five-line staff, showing a treble clef and a key signature of one flat.

Fragment of musical notation on a five-line staff, showing a treble clef and a key signature of one flat.

F. F. Hofbibliothek
Darmeschingen