

# **Badische Landesbibliothek Karlsruhe**

**Digitale Sammlung der Badischen Landesbibliothek Karlsruhe**

## **Graduale benedictum, pars aestivalis - Cod. Schuttern 1**

**[Schuttern], [Ende des 15. Jh.]**

Gradualfragment

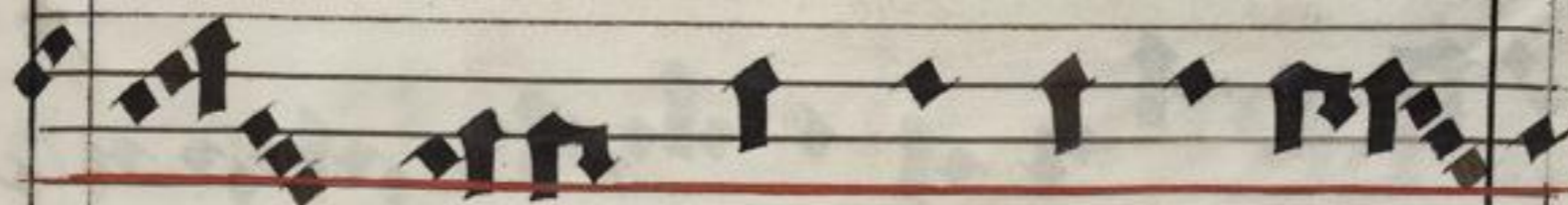
[urn:nbn:de:bsz:31-72318](https://nbn-resolving.org/urn:nbn:de:bsz:31-72318)



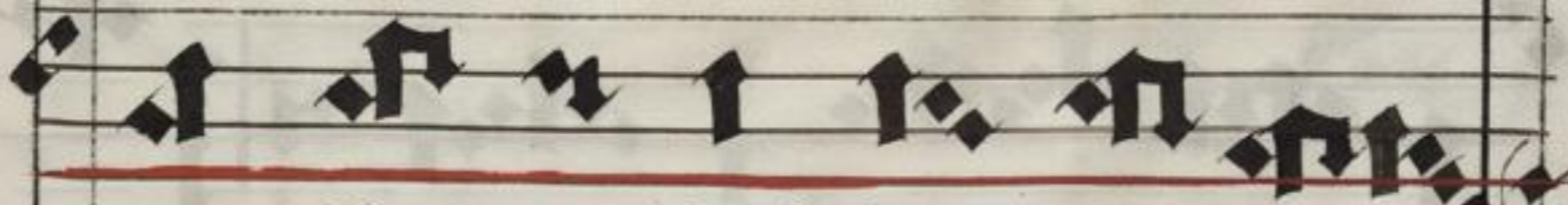
zu Schuttern 1.

Das ist ein Klavierstück  
von demselben Meister  
Ludwig, des alten Graduale.  
(Proprium Schuttern: Conversio  
S. Pauli.)

18/ix 1878 1073



uis in me vacua



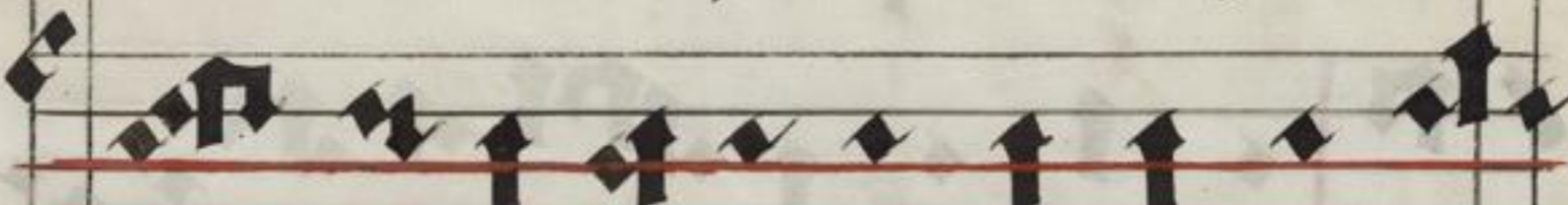
non fu it sed semper in



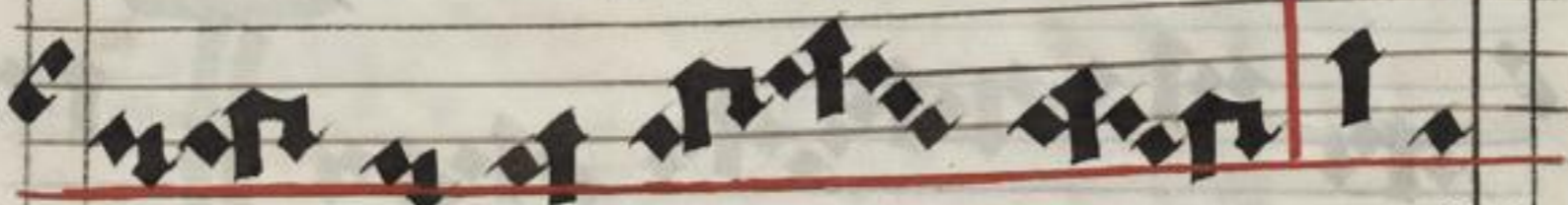
me ma net **R**ui opera



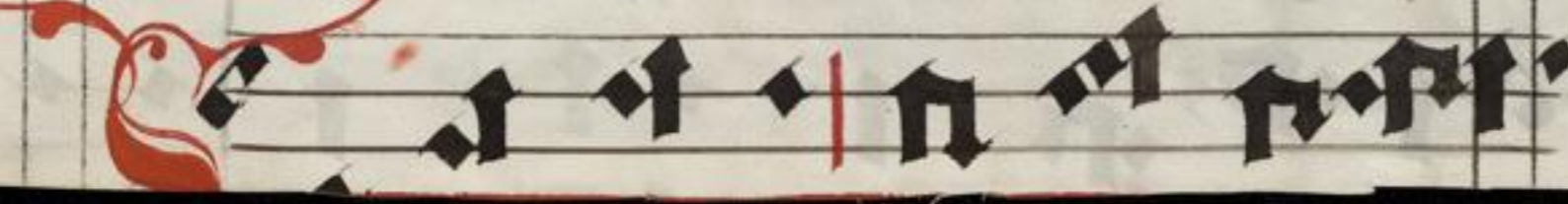
tus est petro in aposto



la tu o peratus est et michi



inter gen tes et g





le predicator veri ta tis

le predicator veri ta tis

et doctor genium In

et doctor genium In

terce de pro nobis ad de

terce de pro nobis ad de

um qui te ce le

um qui te ce le

git vt digni effi nia mir

git vt digni effi nia mir

gratia de i Lu

gratia de i Lu



et voca uit per gratiam su

am ut reuela ret si

lium suum per me ut

ewangeliza rem il lu

in genti bus Non

in genti bus Non

in genti bus Non

in genti bus Non

in genti bus Non

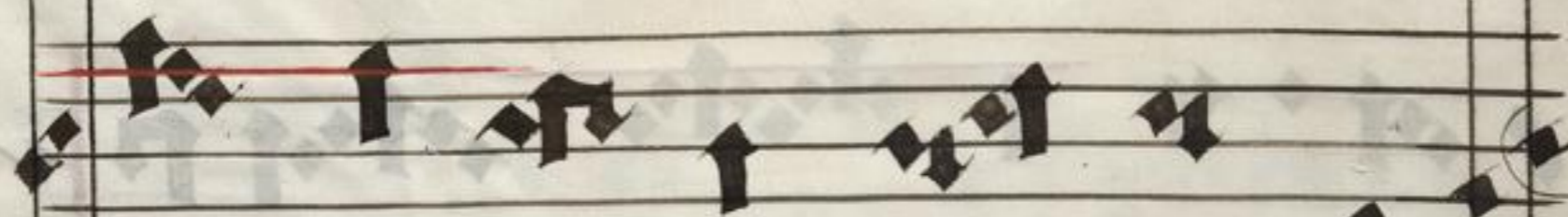
in genti bus Non

in genti bus Non

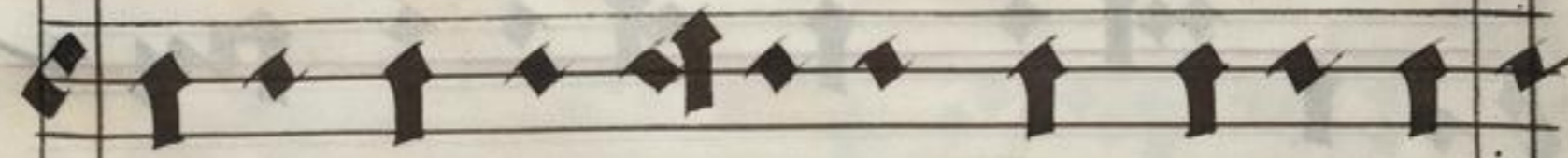
in genti bus Non

in genti bus Non





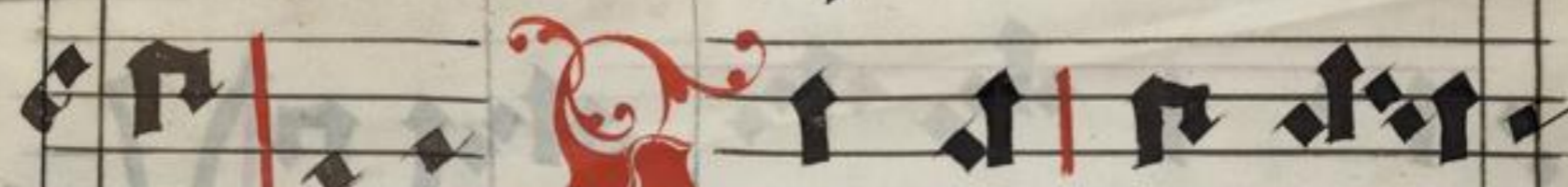
car ni et sangui ni neqs



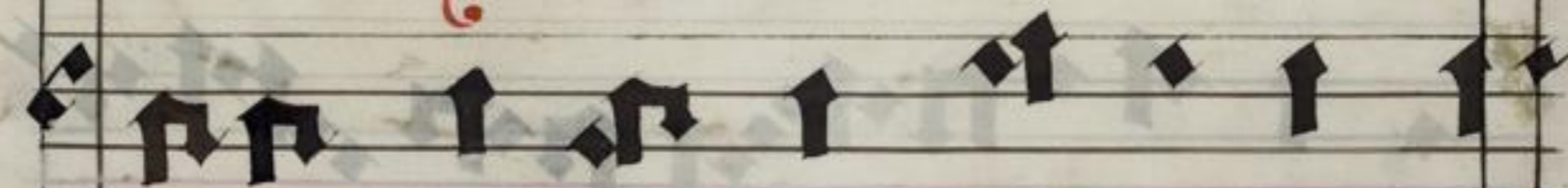
veni iherosolimã ad antecel



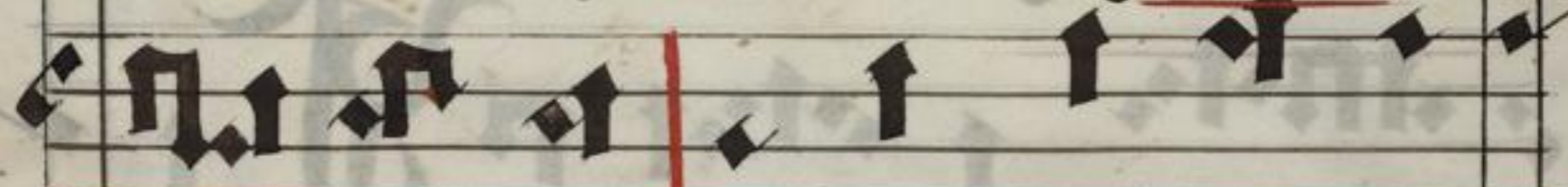
sores meos a po sto los



Ute **G** aulus autem



magis ac magis rōua



le sce bat et confundebat

