

Badische Landesbibliothek Karlsruhe

Digitale Sammlung der Badischen Landesbibliothek Karlsruhe

Agamemnon vengé - Don Mus.Ms. 134

Asplmayr, Franz

[S.l.], 1780 (1780c)

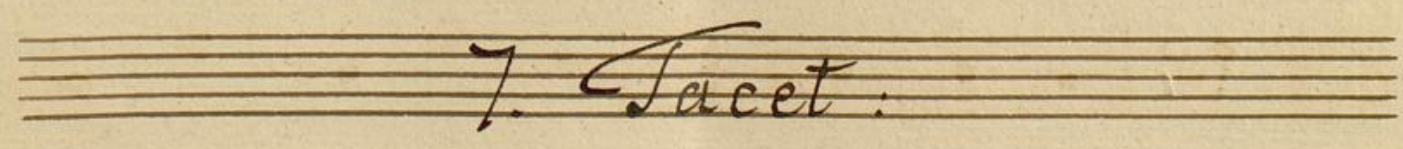
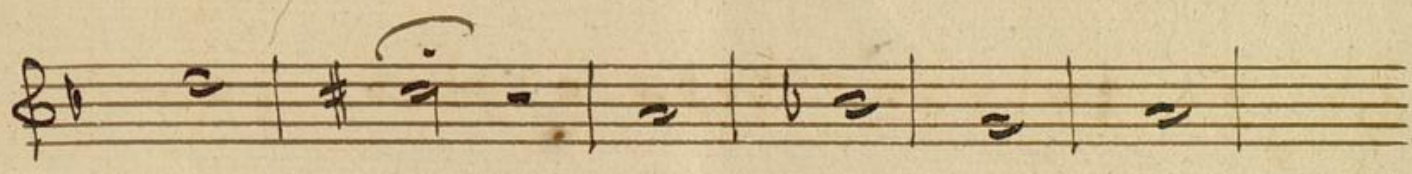
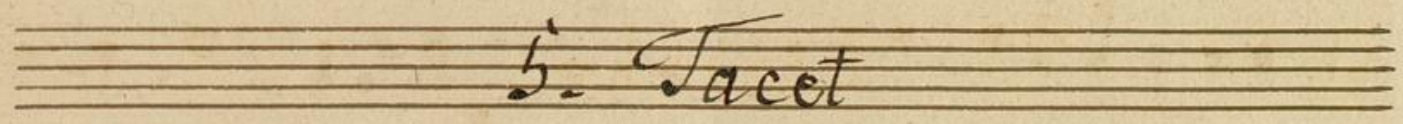
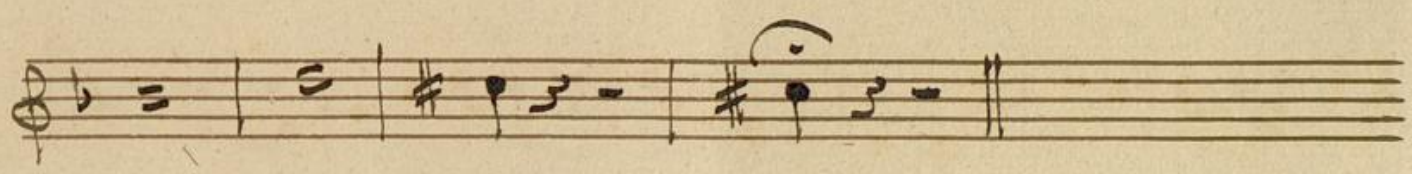
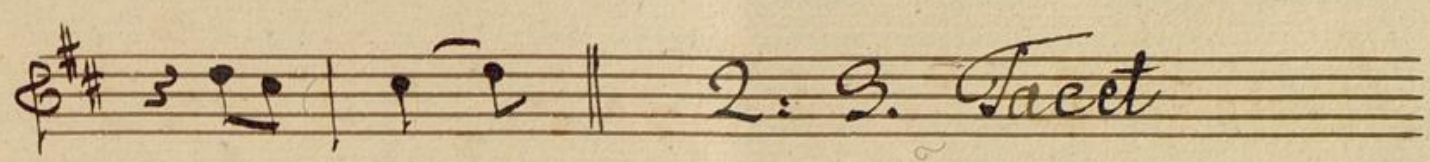
Nro: 1 - 15

urn:nbn:de:bsz:31-72437

Sinfonia

Allegro C

And. *Adagio* $\text{C}\sharp$ $\text{C}\sharp$ $\frac{2}{4}$



8.

Marcia. $\text{G}\sharp\text{A}$ C

9. 10. Tacet

11. Ciaccone $\text{G}\#\text{A}$ $\frac{3}{2}$

Handwritten musical score for 'Ciaccone' in G major (one sharp) and 3/2 time. The score consists of seven staves. The first staff contains the title and key signature. The subsequent staves contain the musical notation, including a treble clef, a key signature of one sharp (F#), and a 3/2 time signature. The notation includes various note values, rests, and accidentals. The piece concludes with a double bar line and repeat dots.

12. Pasacalle $\text{G}\#\text{A}$ $\frac{3}{2}$

Handwritten musical score for 'Pasacalle' in G major (one sharp) and 3/2 time. The score consists of two staves. The first staff contains the title and key signature. The second staff contains the musical notation, including a treble clef, a key signature of one sharp (F#), and a 3/2 time signature. The notation includes various note values, rests, and accidentals. The piece concludes with a double bar line and repeat dots.

Seite 5-8 waren zusammen
genäht

A handwritten musical score on ten staves, written in treble clef with a key signature of two sharps (F# and C#). The notation includes various rhythmic values such as eighth, sixteenth, and thirty-second notes, as well as rests and dynamic markings like 'p' (piano) and 'pp' (pianissimo). The score is organized into systems of two staves each, with some staves containing complex passages with many beamed notes. The paper shows signs of age, including some staining and a small mark in the bottom left corner.

Handwritten musical notation on a five-line staff, including a treble clef, a key signature of one sharp (F#), and a time signature of 3/4.

Empty five-line musical staff.

Empty five-line musical staff.

Empty five-line musical staff.

Empty five-line musical staff.

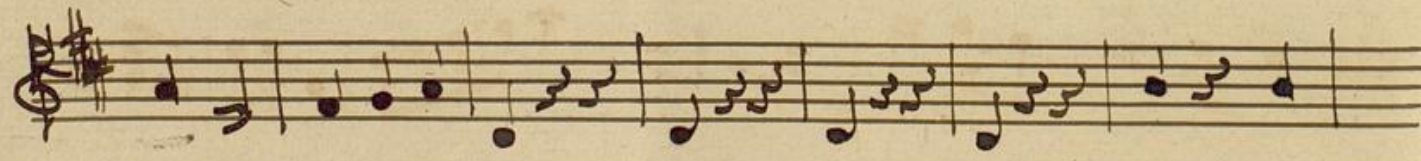
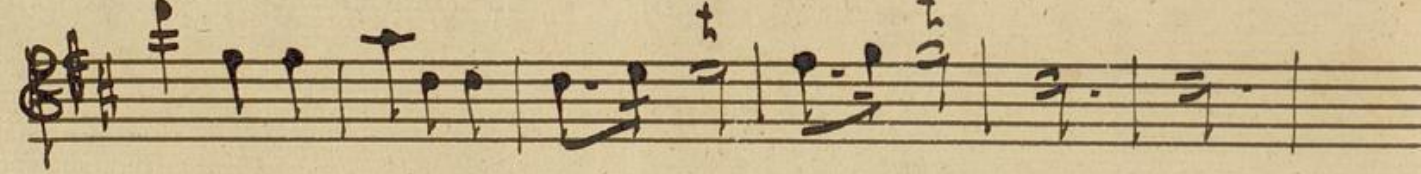
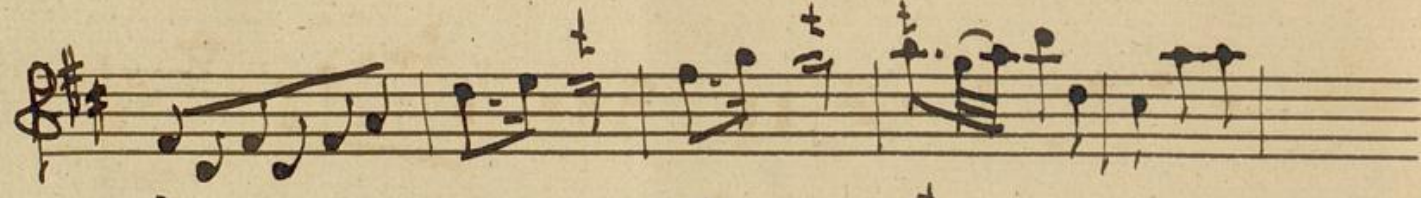
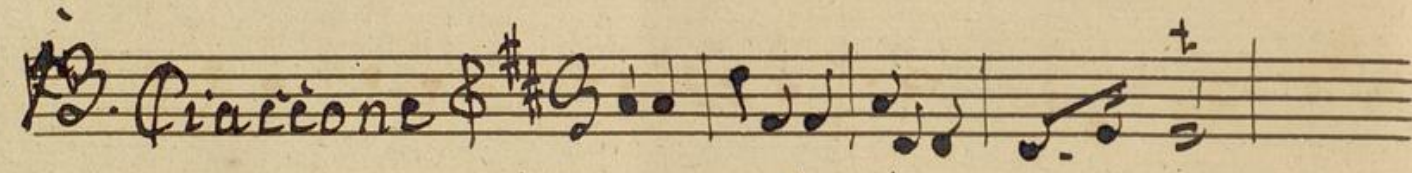
Empty five-line musical staff.

Handwritten musical notation on a five-line staff, including a large decorative initial 'B', a treble clef, a key signature of one sharp (F#), and a time signature of 3/4.

Empty five-line musical staff.

Empty five-line musical staff.

Empty five-line musical staff.



15. Loure $\text{G}\sharp\text{C}\sharp$ $\frac{3}{4}$ *p*

Segue

Ciaccone $\text{G}\sharp\text{C}\sharp$ $\frac{3}{4}$