

# **Badische Landesbibliothek Karlsruhe**

**Digitale Sammlung der Badischen Landesbibliothek Karlsruhe**

## **Agamemnon vengé - Don Mus.Ms. 134**

**Asplmayr, Franz**

**[S.l.], 1780 (1780c)**

Nro: 1 - 15

**urn:nbn:de:bsz:31-72437**

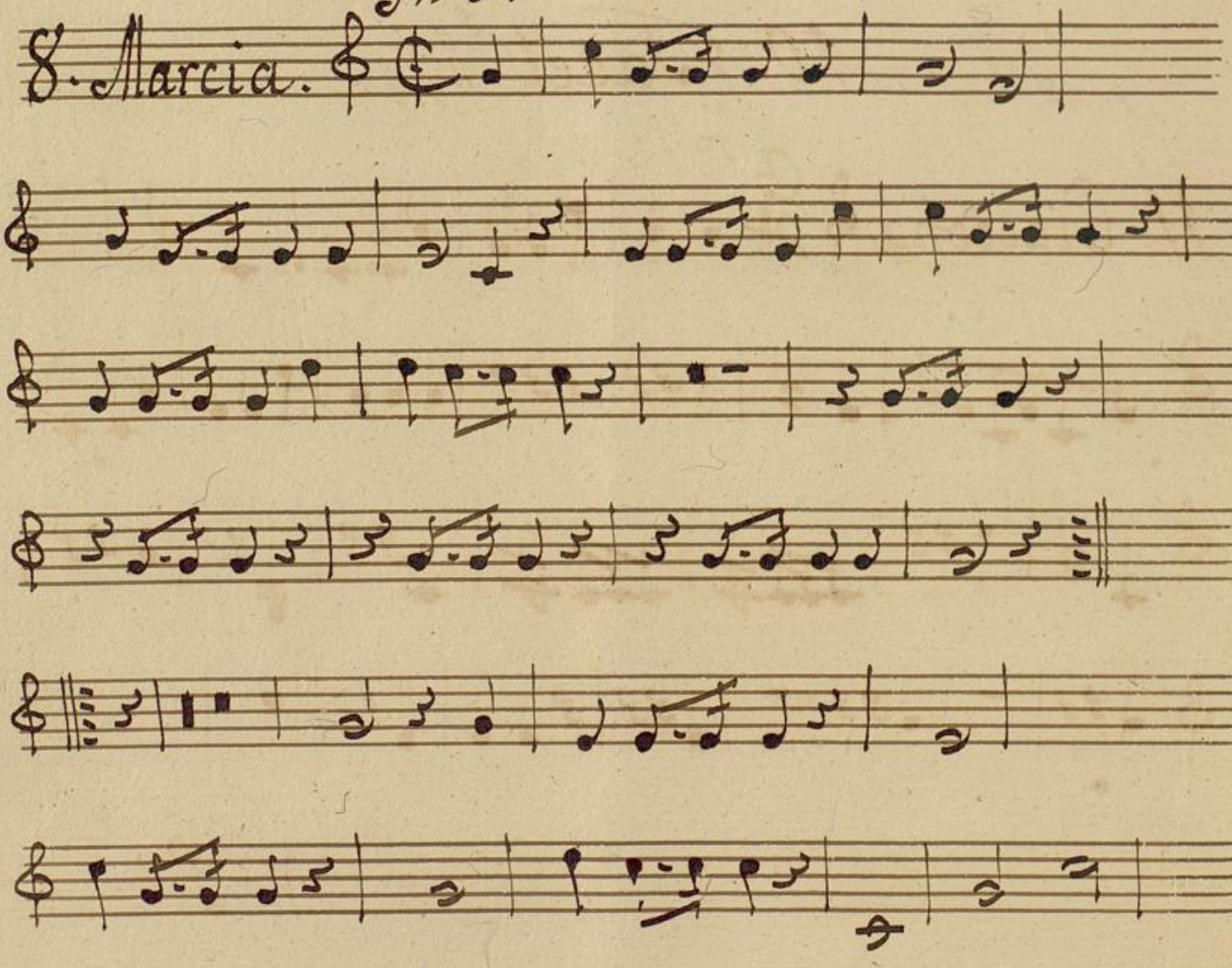
*Sinfonia. Tacet // f Tacet.*

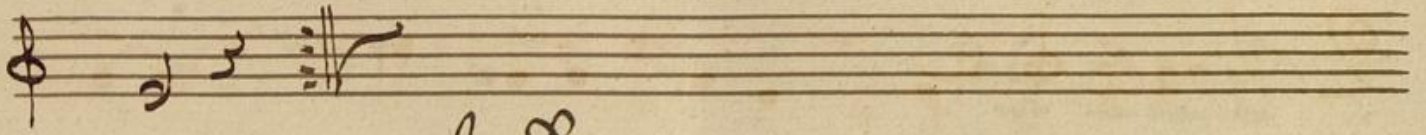
*In D.*

2. *Vivace* & 

3. 4. 5. 6. 7. *Tacet:*

*In D.*

8. *Marcia*. & 

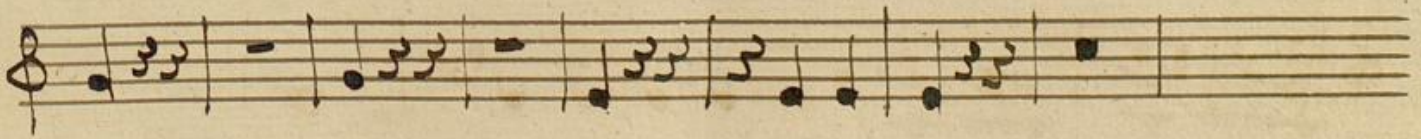


In D.



10. *Tacet* //

In D.



*V. L.*

12. *Tacet*

13. *Ciaccona.*  $\frac{2}{4}$

14. *Tacet*

15. Loure In D.

Musical notation on a single staff, starting with a treble clef, a key signature of one sharp (F#), and a 3/8 time signature. The melody begins with a series of eighth notes.

Musical notation on a single staff, continuing the melody with eighth and sixteenth notes.

Musical notation on a single staff, featuring a mix of eighth and sixteenth notes.

Musical notation on a single staff, including a double bar line and a repeat sign.

Musical notation on a single staff, continuing the piece with eighth notes.

Musical notation on a single staff, showing a change in rhythm with dotted notes.

Musical notation on a single staff, ending with a double bar line.

Musical notation on a single staff, concluding with the word "Segue." written in a cursive hand.

Three empty musical staves at the bottom of the page.