

# **Badische Landesbibliothek Karlsruhe**

**Digitale Sammlung der Badischen Landesbibliothek Karlsruhe**

## **Symphonies - Don Mus.Ms. 239**

**Cannabich, Christian**

**[S.l.], 1780 (1780c)**

Viola I & II [2. Exemplar]

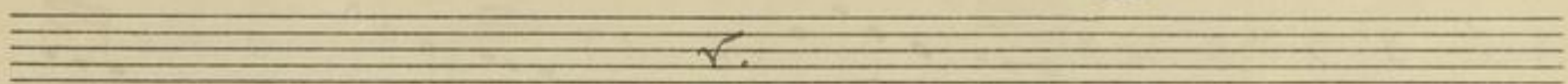
**urn:nbn:de:bsz:31-74061**

Sinfonia



Dittersdorf. Mus. No. 234  
Gesellschaft der Musikfreunde  
zu Donaueschingen

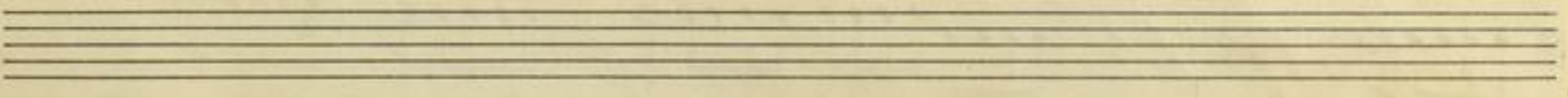
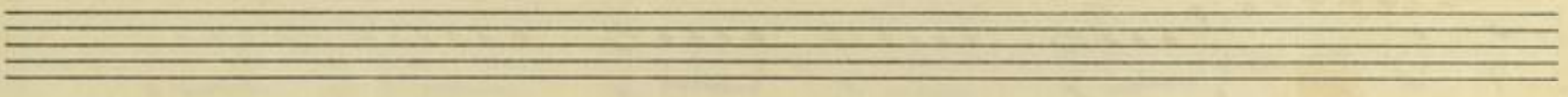
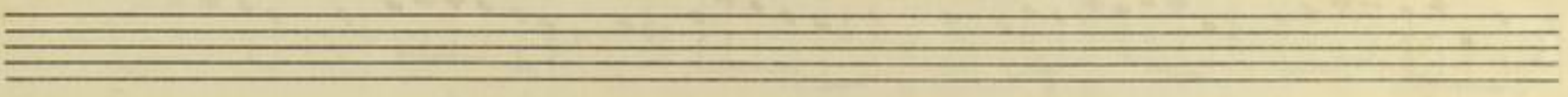
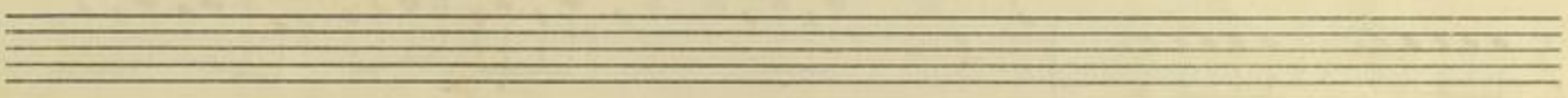
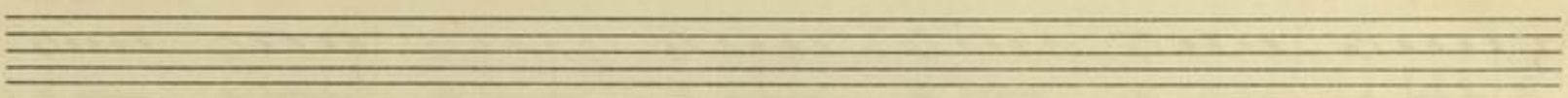
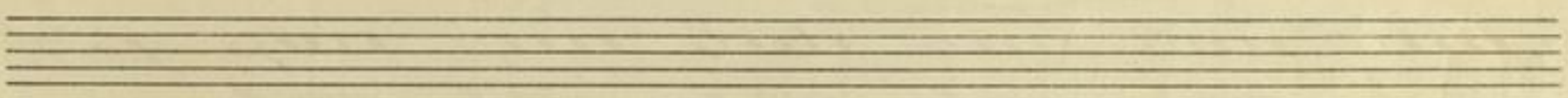
1



Dittersdorf  
Cambridge.

Viola

Prima e Seconda



**BLB**

Badische Landesbibliothek  
Karlsruhe



2

1

Brassre.

Sinfonia.

Allo. non tanto.

Handwritten musical score for Brassre. in 3/4 time, marked "Allo. non tanto." The score consists of ten staves of music, numbered 1, 8, 12, 24, 32, 38, 46, 54, 61, 62, 72, and 78. The notation includes various dynamics such as *ff*, *f*, *p*, *pp*, and *fz*. There are also performance markings like *rit.*, *tr.*, and *acc.*. The score is written on aged paper with some staining and includes a circled *p* marking on the first staff.

85  
90  
101  
107  
115  
123  
128  
137  
144  
152  
159  
166





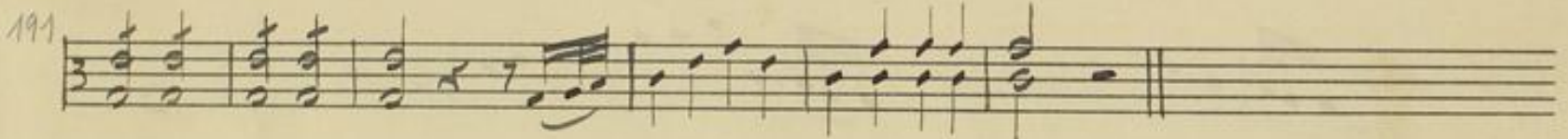
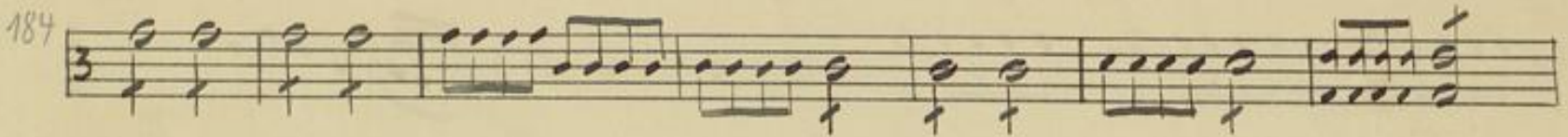
Handwritten musical score on ten staves, numbered 85, 90, 101, 102, 115, 123, 128, 137, 144, 152, 159, and 166. The music is written in treble clef with a 3/4 time signature. It features various rhythmic patterns, including eighth and sixteenth notes, and rests. Dynamic markings such as *p*, *fp*, *f*, and *pp* are present. Performance instructions like *a poco a poco* are also included. The manuscript shows signs of age, with some ink bleed-through from the reverse side.





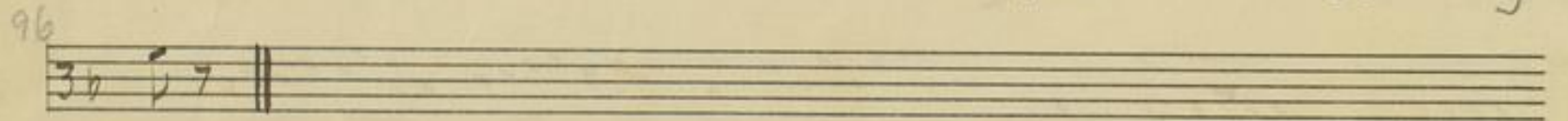
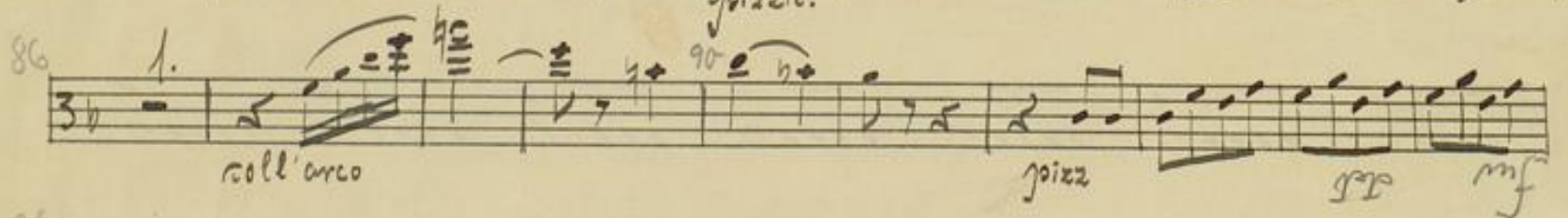
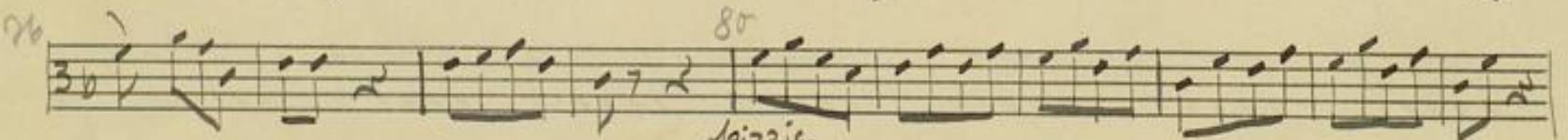
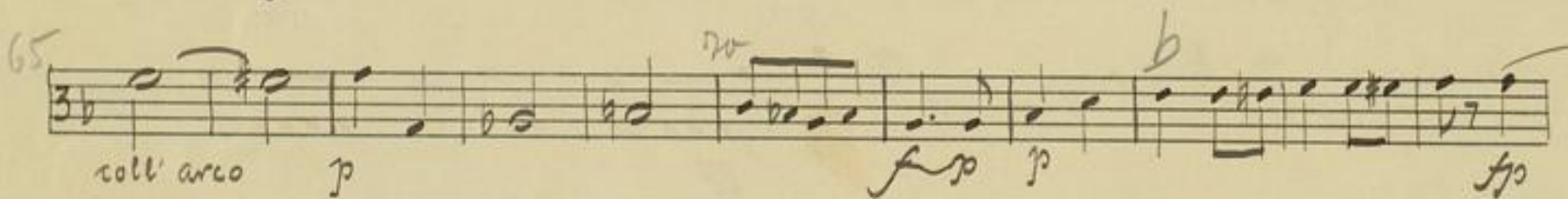
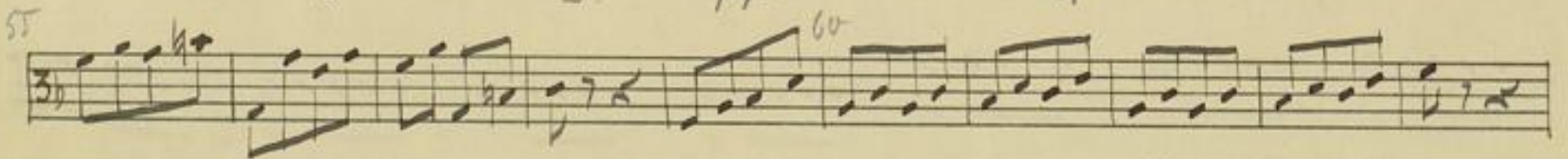
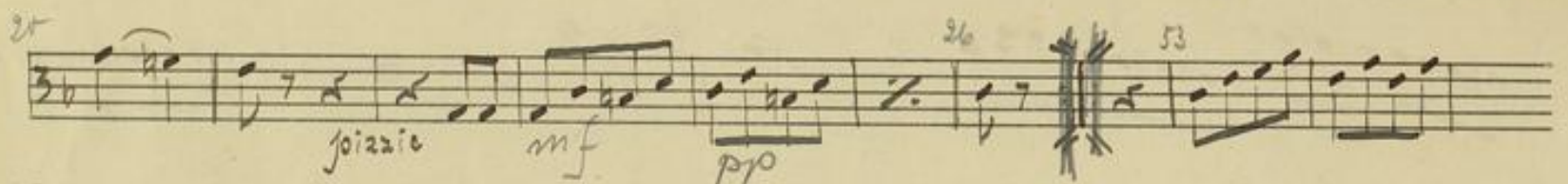
3

3



Andante

pizzicato 1





Presto

*a Duo*

2

10 *ppp*

22 *f*

33

45

56 *a*

66

76

89 *ff*

103 *f*

116

130

140





Handwritten musical score on a single staff, 3/4 time signature. The score consists of several lines of music with measure numbers and dynamic markings.

- Line 1: Measure 141, dynamic *f*. Includes a sixteenth-note triplet (6) and a measure marked 150.
- Line 2: Measure 154, includes a triplet (3) and a measure marked 160.
- Line 3: Measure 167, includes a measure marked 170 and a dynamic marking *p*.
- Line 4: Measure 180, includes a measure marked 190.
- Line 5: Measure 191, includes a measure marked 200.
- Line 6: Measure 203, dynamic *f*, includes a measure marked 210.
- Line 7: Measure 215, includes a measure marked 220, a dynamic marking *p*, and a measure marked *f*.
- Line 8: Measure 228, includes a measure marked 230.

Four sets of empty musical staves, each consisting of five lines, arranged vertically on the page.