

**Badische Landesbibliothek Karlsruhe**

**Digitale Sammlung der Badischen Landesbibliothek Karlsruhe**

**Enzième Ouverture de concert à grand orchestre**

**Kalivoda, Jan Křtitel Václav**

**Leipzig [u.a.], [1847]**

Viola [2. Exemplar]

**urn:nbn:de:bsz:31-75905**

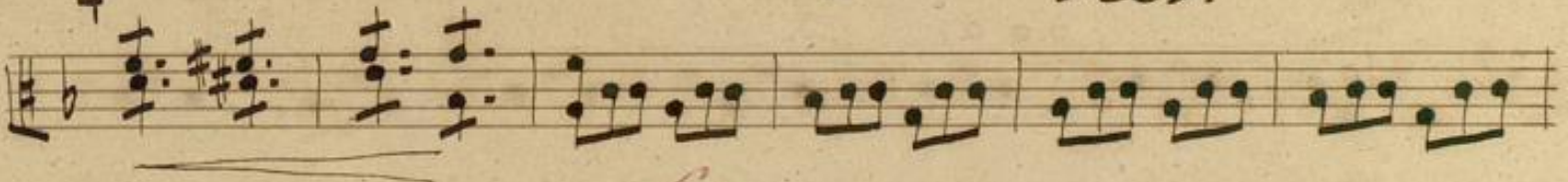
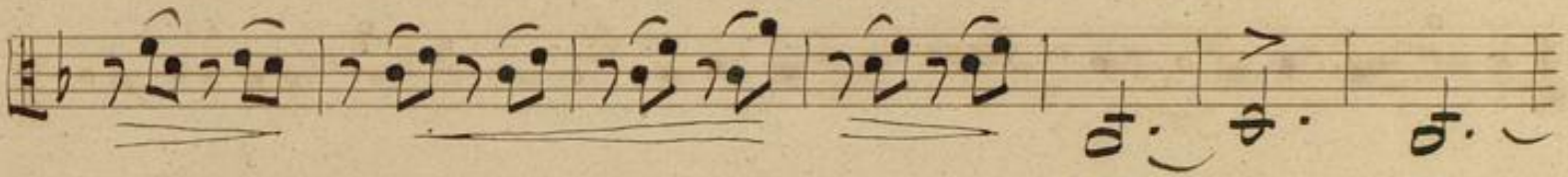
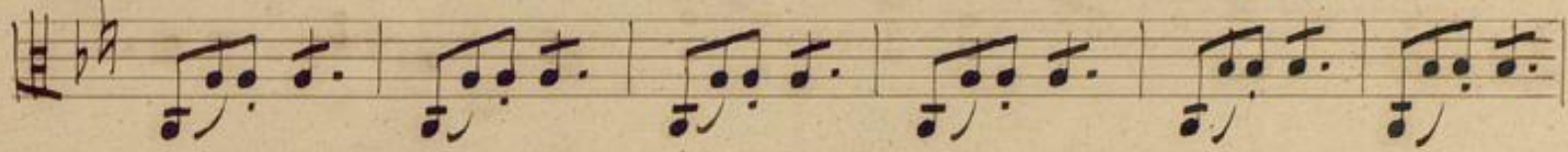
Viola.

12<sup>te</sup> Ouverture von F. W. Kalliwoda.

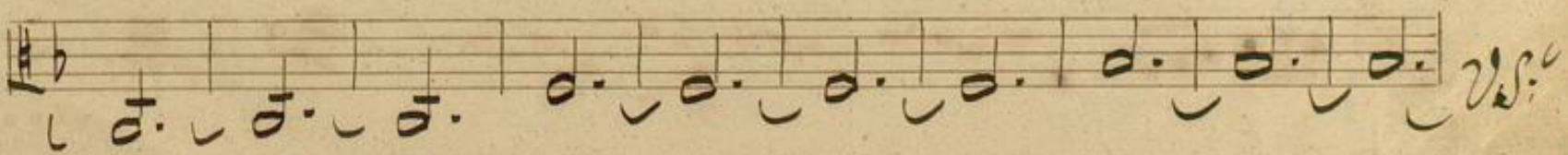
*Molto Vivace.*

A handwritten musical score on ten staves. The notation includes treble clefs, a key signature of two flats (B-flat and E-flat), and a common time signature. The score features various musical notations such as chords, single notes, and rests. Annotations include dynamic markings like *pp*, *f*, and *sfz*, and performance instructions such as *rit.* and *tr.*. A double bar line is present on the second staff, and a repeat sign is at the end of the tenth staff. The manuscript is written in dark ink on aged, yellowish paper.

B.



C.



Handwritten musical notation on three staves. The first staff contains a melodic line with a series of quarter notes, some with accents. The second and third staves contain dense chordal textures with many notes.

Handwritten musical notation on a single staff, featuring a melodic line with various rhythmic values and slurs.

Handwritten musical notation on a single staff, showing a melodic line with slurs and a final measure with a fermata.

Handwritten musical notation on a single staff, featuring a melodic line with slurs and a double bar line. Includes the handwritten annotation *D.* above the staff and *cres:* to the right.

Handwritten musical notation on a single staff, showing a melodic line with slurs and a final measure with a fermata. Includes the handwritten annotation *2.* above the staff.

Handwritten musical notation on a single staff, featuring a melodic line with slurs and a final measure with a fermata. Includes the handwritten annotation *f.* above the staff and *pizz:* below the staff.

Handwritten musical notation on a single staff, showing a melodic line with slurs and a final measure with a fermata.

Handwritten musical notation on a single staff, featuring a melodic line with slurs and a final measure with a fermata. Includes the handwritten annotation *arco.* below the staff.

Handwritten musical notation on a single staff, showing a melodic line with slurs and a final measure with a fermata.

Handwritten musical notation on a single staff, featuring a melodic line with slurs and a final measure with a fermata.

Handwritten musical notation on a single staff, featuring a treble clef, a key signature of two flats, and a series of quarter notes.

Handwritten musical notation on a single staff, featuring a treble clef, a key signature of two flats, and a series of eighth notes. The word *crus:* is written below the staff.

Handwritten musical notation on a single staff, featuring a treble clef, a key signature of two flats, and a series of eighth notes. A double bar line is present.

Handwritten musical notation on a single staff, featuring a treble clef, a key signature of two flats, and a series of eighth notes.

Handwritten musical notation on a single staff, featuring a treble clef, a key signature of two flats, and a series of eighth notes. The word *f.* is written above the staff.

Handwritten musical notation on a single staff, featuring a treble clef, a key signature of two flats, and a series of eighth notes. The word *f.* is written above the staff.

Handwritten musical notation on a single staff, featuring a treble clef, a key signature of two flats, and a series of eighth notes. The word *sc.* is written above the staff.

Handwritten musical notation on a single staff, featuring a treble clef, a key signature of two flats, and a series of eighth notes.

Handwritten musical notation on a single staff, featuring a treble clef, a key signature of two flats, and a series of eighth notes.

Handwritten musical notation on a single staff, featuring a treble clef, a key signature of two flats, and a series of eighth notes.

Handwritten musical notation on a single staff, featuring a treble clef, a key signature of two flats, and a series of eighth notes. The word *V. L.* is written below the staff.

This image shows a page of handwritten musical notation, likely a piano score. The page is divided into several systems, each consisting of two staves (treble and bass clef). The music is written in a key signature of two flats (B-flat and E-flat) and a common time signature (C). The notation includes various note values, rests, and dynamic markings such as *res*, *den*, *do*, and *f*. There are also some red markings, including a red *f* and a red flourish. The paper is aged and shows some wear, with a small tear at the top right corner.

Handwritten musical notation on a single staff, featuring a treble clef, a key signature of two flats (B-flat and E-flat), and a 3/4 time signature. The notation includes eighth and sixteenth notes, rests, and a sharp sign (#) on the final note.

Handwritten musical notation on a single staff, continuing the piece with eighth and sixteenth notes and rests.

Handwritten musical notation on a single staff, continuing the piece with eighth and sixteenth notes and rests.

Handwritten musical notation on a single staff, continuing the piece with eighth and sixteenth notes and rests.

Handwritten musical notation on a single staff, continuing the piece with eighth and sixteenth notes and rests. The instruction *stringendo sempre piu fff* is written below the staff.

Handwritten musical notation on a single staff, continuing the piece with eighth and sixteenth notes and rests.

Handwritten musical notation on a single staff, continuing the piece with eighth and sixteenth notes and rests.

Handwritten musical notation on a single staff, continuing the piece with eighth and sixteenth notes and rests. The instruction *f.* is written above the staff. The piece concludes with a double bar line and a decorative flourish.

Four empty musical staves at the bottom of the page, each consisting of five horizontal lines.

Handwritten musical notation on a page with 12 staves. The notation is extremely faint and illegible, appearing as light grey or brownish smudges and lines across the staves. There are some faint, dark ink marks or smudges scattered across the page, particularly in the lower half.