

# **Badische Landesbibliothek Karlsruhe**

**Digitale Sammlung der Badischen Landesbibliothek Karlsruhe**

## **Les deux journées - Don Mus.Ms. 248a,b**

**Cherubini, Luigi**

**[S.l.], 1820 (1820c)**

Akt III

**urn:nbn:de:bsz:31-74366**







A handwritten musical score on ten staves. The notation includes various rhythmic values, accidentals, and phrasing marks. The first staff begins with a treble clef and a key signature of one sharp (F#). The music features a mix of eighth and sixteenth notes, often beamed together. There are several slurs and accents throughout the piece. A small 'p' with a double underline is visible in the first staff. The paper is aged and shows some staining.



Musical notation on a single staff, featuring a series of eighth and sixteenth notes with slurs.

Musical notation on a single staff, ending with a decorative flourish.

No. 11.

Andino  
Musical notation on a single staff, starting with a 3/4 time signature and a 3-measure rest.

Mein Anton  
was ist zu end?  
Musical notation on a single staff, with the word "con:" written below.

Musical notation on a single staff, featuring a series of eighth notes with slurs and dynamic markings like "p" and "f".

Musical notation on a single staff, featuring a series of eighth notes with slurs and dynamic markings like "f" and "p".

Musical notation on a single staff, featuring a series of eighth notes with slurs and dynamic markings like "p".

Musical notation on a single staff, ending with a double bar line and a fermata.

Musical notation on a single staff, ending with a double bar line and a fermata.

Musical notation on a single staff, ending with a double bar line and a fermata.

Musical notation on a single staff, ending with a double bar line and a fermata.



Musical staff with notes and a *pp* dynamic marking.

Musical staff with notes and a *pp* dynamic marking.

Musical staff with notes, a *pp* dynamic marking, and the instruction *marche con moto* in red ink.

Musical staff with notes and a *pp* dynamic marking.

Musical staff with notes and a *f* dynamic marking.

Musical staff with notes.

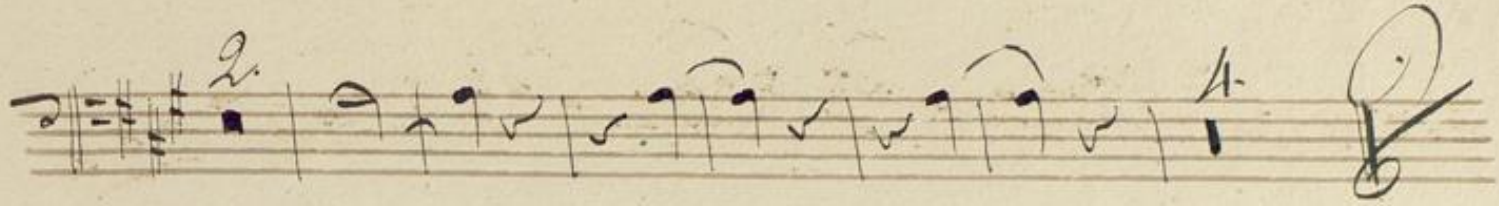
Musical staff with notes.

Musical staff with notes and a *ff* dynamic marking.

Musical staff with notes, a *modo* instruction in red ink, and a *5.* marking.

Musical staff with notes, a *4.* marking, and red ink lyrics: *Vin sind fort, bringt uns ynd trost  
soub, in sulden dort untern  
im Doofn.* A *3.* marking and a *pp* dynamic marking are also present.



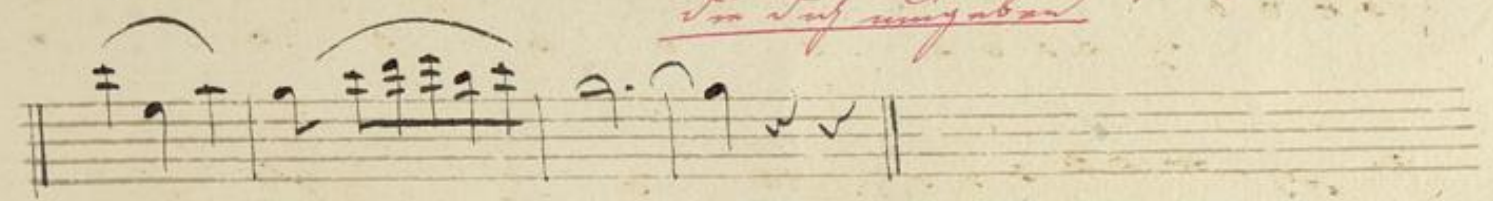


No 12

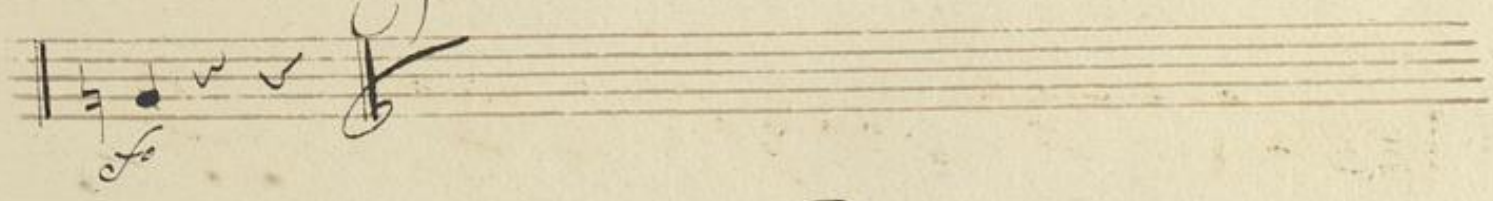


Manch frucht volich gütigen muss ich in dir sein  
Hoffnung du bist ein, und uns einen Augenblick Luft.

Gute Constanze, wir zittern in dir  
und wir sind dir von dem Gesehnen befreit,  
in dir ungenügend



Manche über die gültigen Absicht anzusehen muss  
den Wunsch und den unrichtigen Wunsch.



G. G.



No 13. Melodrame Facet.

*L'ostenuto*

Handwritten musical score for 'No 13. Melodrame Facet.' The score is written on ten staves. The first staff is labeled 'L'ostenuto' and contains a few notes with a fermata. The second staff begins with a treble clef and contains a melodic line with a fermata. The third staff has a first ending bracket and is marked 'Allo.' in red. The fourth staff starts with a '6.' and contains a complex rhythmic passage with a 'f' dynamic. The fifth staff has a '5.' and is marked 'modto' in red. The sixth staff has a '1.' and '2.' and is marked 'f'. The seventh staff has a '4.' and contains a series of chords. The eighth staff has an '8.' and contains a melodic line. The ninth staff has a '1.' and contains a melodic line with a 'p' dynamic. The tenth staff contains a final melodic phrase with a 'p' dynamic.

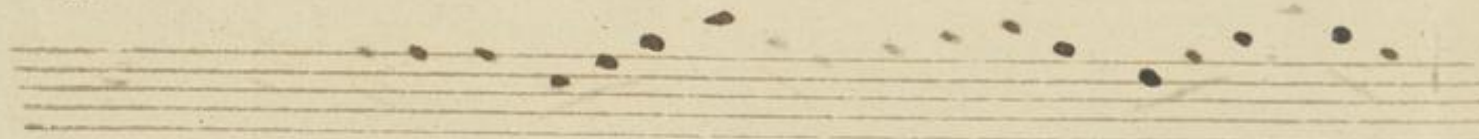




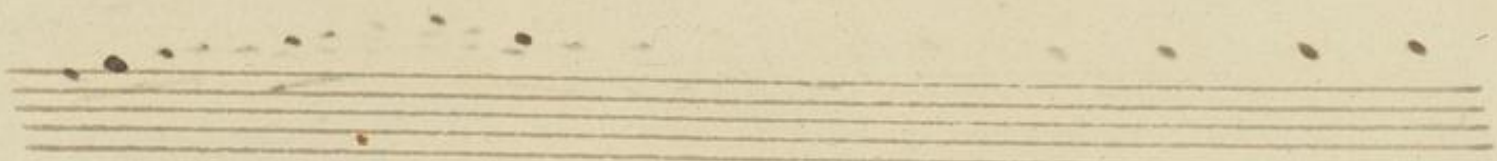




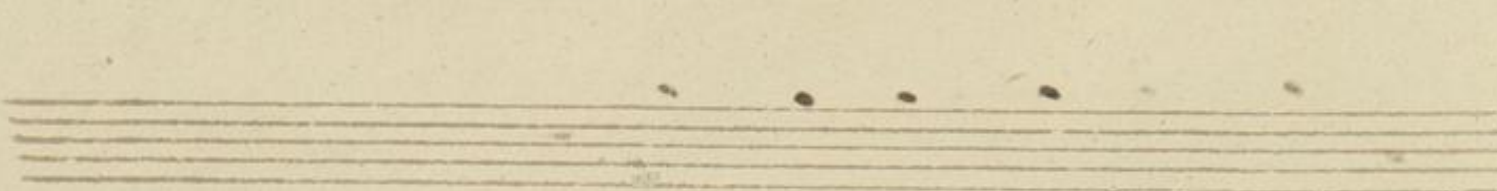
*Voluntatem! suscipit isus unquam libellus fort!*



*No. 14. Tacet.*



*Fine.*





Handwritten musical notation on ten staves. The notation is extremely faint and illegible, appearing as light grey lines and sparse dots on the aged, yellowish paper. The staves are arranged vertically down the page.



Handwritten musical notation on ten staves. The notation is extremely faint and illegible, appearing as light grey lines on the aged paper. The staves are arranged vertically down the page.

