

# **Badische Landesbibliothek Karlsruhe**

**Digitale Sammlung der Badischen Landesbibliothek Karlsruhe**

## **Masses - Don Mus.Ms. 305**

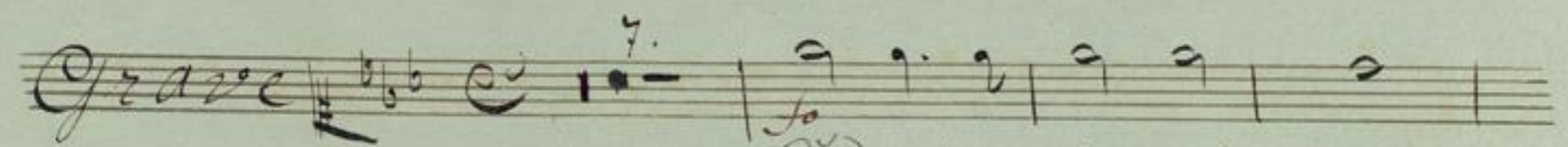
**Danzi, Franz**

**[S.l.], 1800 (1800c)**

Credo

**urn:nbn:de:bsz:31-75551**

Credo

*Grave*  *f*

Credo in unum De-

um patrem omnipotentem factorem

caeli et terrae visibilium

omnium et invisibilium Credo Cre-do

et in unum Dominum

*Jesum Christum filium Dei uni-ge-ni-*

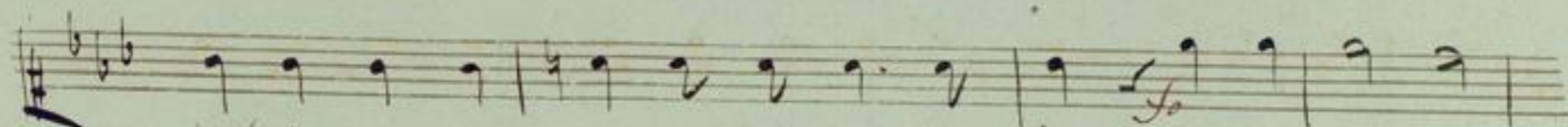
*tum et ex patre notum ante omnia sae-cu-*

*la* *Crede cre-do* *Deum de Deo*

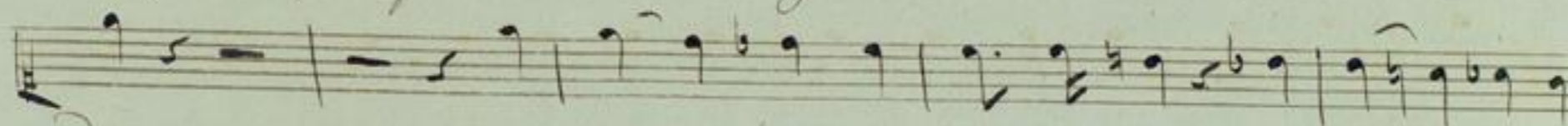
*lumen de lumine Deum verum de*

*Deo ve-ro* *credo credo* *ge-ni-*

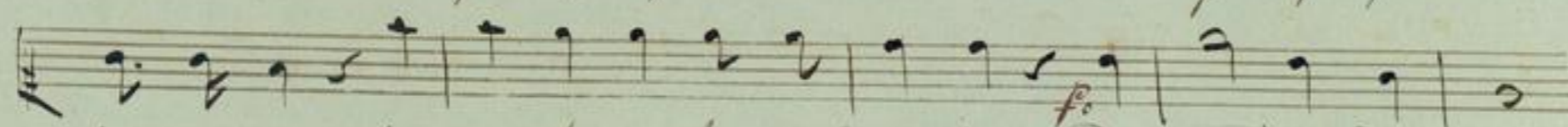
*tum non fac-tum* *consubstanti-a-lem*



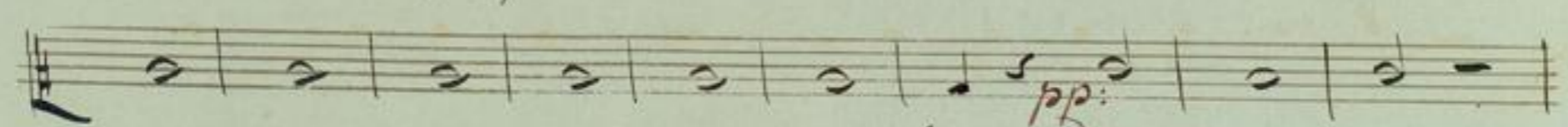
patri per quem omnia facta sunt credo cre-



do qui propter nos homines qui propter nos

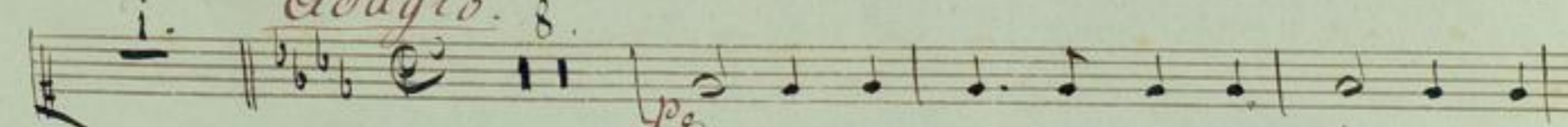


homines et propter nostram salutem descendit de cae-

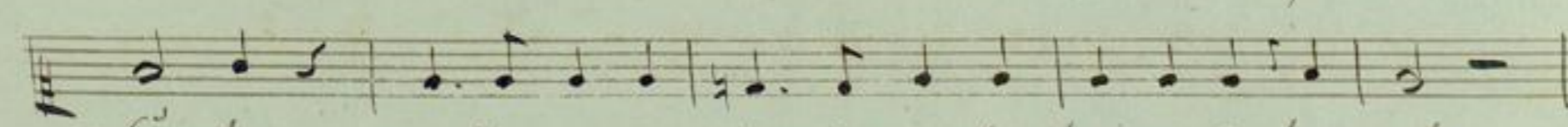


lis de caelis

*Adagio. 8.*



Et in car-natus est de Spi-ri-tu



Sancto ex Maria virgine et homo factus est



4.

Cru-ci-fixus eti-am pro nobis Sub Pon-te.

o Pi-la-to pas-sus pas-sus

= sus pas-sus et Se-pul-tus

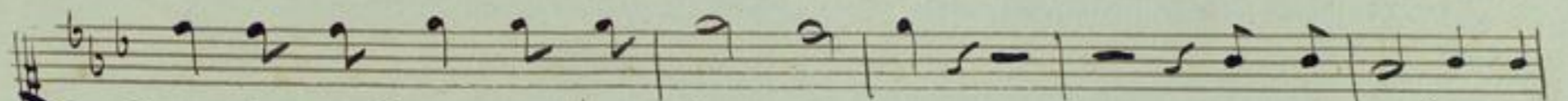
pas-sus et Se-pul-tus est pas-sus

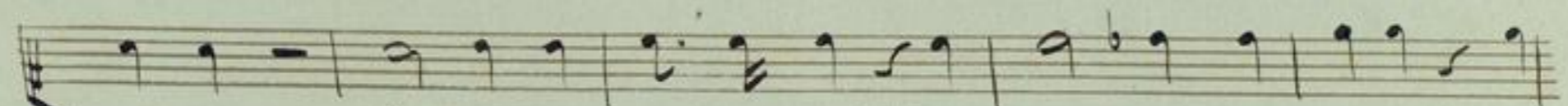
= sus et Se-pul-tus est

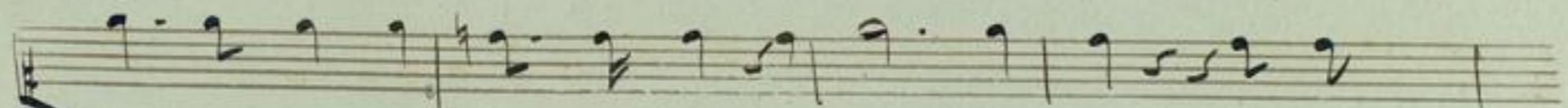
Et resurrexit

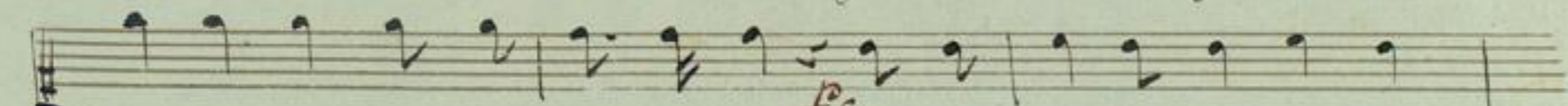
Allegretto 8. f

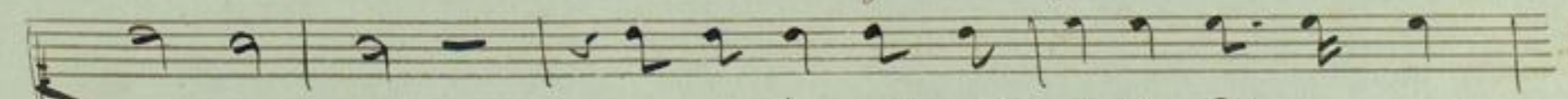
Et resurrexit terti-a

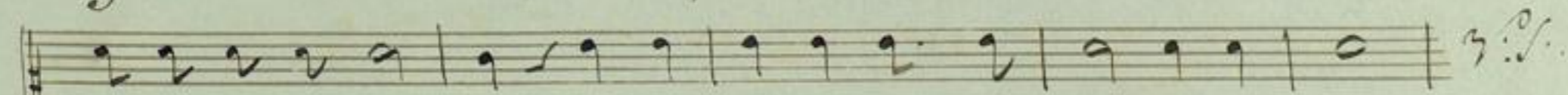

 die secundum Scripturas et ascendit in


 caelum sedet ad dexteram ad dexteram patris et


 iterum venturus est cum gloria judi-


 care vivos et mortuos, *f* cuius regni non erit


 firmis et in Spiritum Sanctum Dominum


 et vivificantem qui ex patre fili-  
 oque pro-

dit credo cre - do qui lo - cutus est

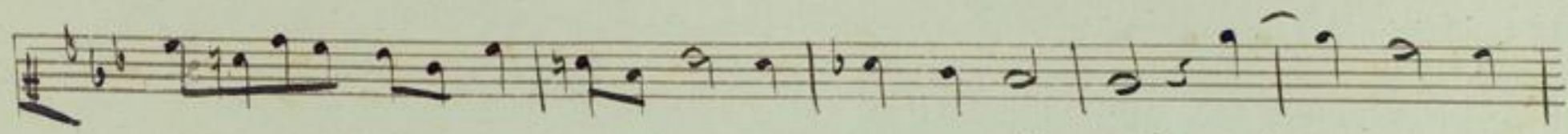
per Prophe - tas et unam Sanctam catholi - cam et

a pos - to - li - cam ec - cle - si - am credo cre -

do et exspecto resurrecti - o - nem

mor - tu - o - rum et vitam venturi

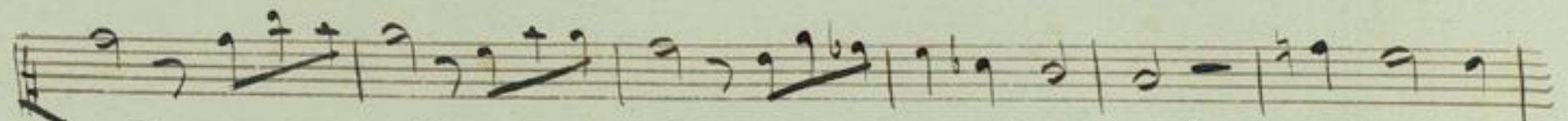
Sa - cu - li a -



= = = = = men a' = men a' = = =



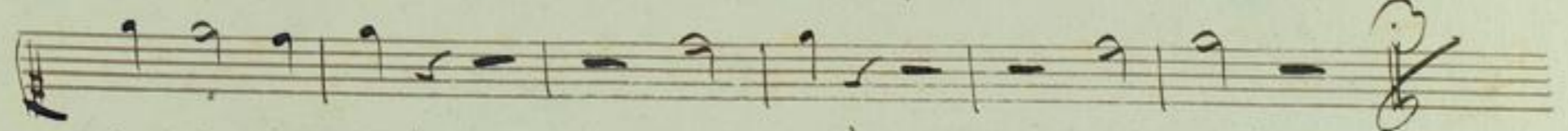
= = = = = men) a = = = = = men) a =



men) a = men) a = men) a = men) a' men) a = =



= = = = = men) a = = = = = men) a' = men) a =



men) a = men) a = men) a' = men) a =

