

Badische Landesbibliothek Karlsruhe

Digitale Sammlung der Badischen Landesbibliothek Karlsruhe

Masses - Don Mus.Ms. 305

Danzi, Franz

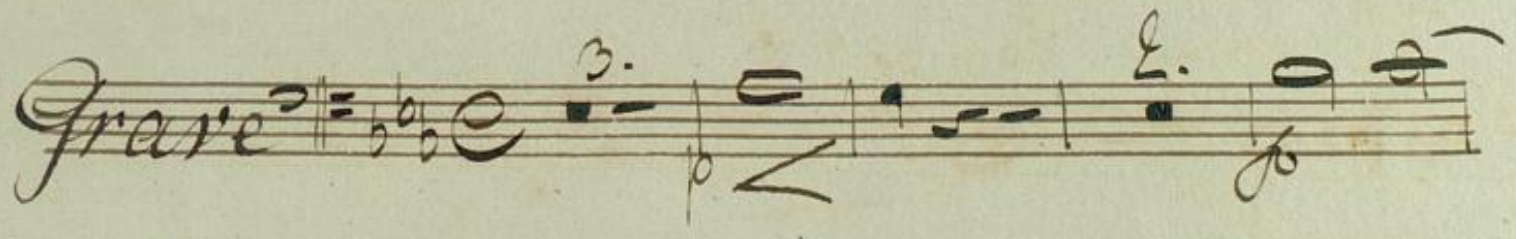
[S.l.], 1800 (1800c)

Credo

urn:nbn:de:bsz:31-75551



Credo



Handwritten musical notation on a single staff, featuring a treble clef, a key signature of two flats, and a common time signature. The notation includes a series of notes with a fermata over the first measure and a dynamic marking of *ff* (fortissimo) below the staff.

Handwritten musical notation on a single staff, featuring a bass clef, a key signature of two flats, and a common time signature. The notation includes a series of notes with a fermata over the first measure and a dynamic marking of *mezzo* (mezzo-forte) below the staff.

Handwritten musical notation on a single staff, featuring a bass clef, a key signature of two flats, and a common time signature. The notation includes a series of notes with a fermata over the first measure and a dynamic marking of *ff* (fortissimo) below the staff.

Handwritten musical notation on a single staff, featuring a bass clef, a key signature of two flats, and a common time signature. The notation includes a series of notes with a fermata over the first measure and a dynamic marking of *ff* (fortissimo) below the staff.

Handwritten musical notation on a single staff, featuring a bass clef, a key signature of two flats, and a common time signature. The notation includes a series of notes with a fermata over the first measure and a dynamic marking of *ff* (fortissimo) below the staff.

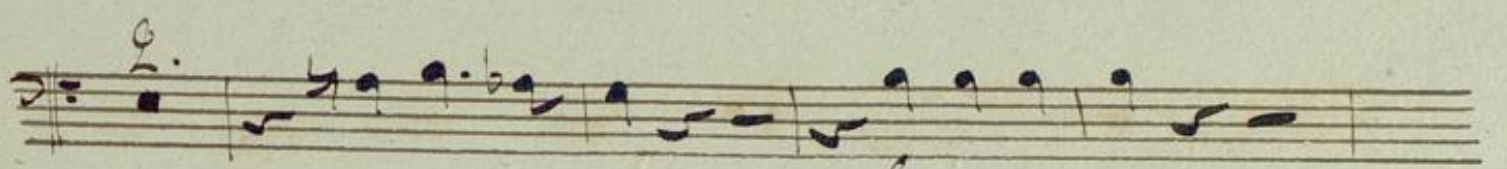
Handwritten musical notation on a single staff, featuring a bass clef, a key signature of two flats, and a common time signature. The notation includes a series of notes with a fermata over the first measure and a dynamic marking of *ff* (fortissimo) below the staff.

Handwritten musical notation on a single staff, featuring a bass clef, a key signature of two flats, and a common time signature. The notation includes a series of notes with a fermata over the first measure and a dynamic marking of *ff* (fortissimo) below the staff.

Handwritten musical notation on a single staff, featuring a bass clef, a key signature of two flats, and a common time signature. The notation includes a series of notes with a fermata over the first measure and a dynamic marking of *ff* (fortissimo) below the staff.

Handwritten musical notation on a single staff, featuring a bass clef, a key signature of two flats, and a common time signature. The notation includes a series of notes with a fermata over the first measure and a dynamic marking of *ff* (fortissimo) below the staff.

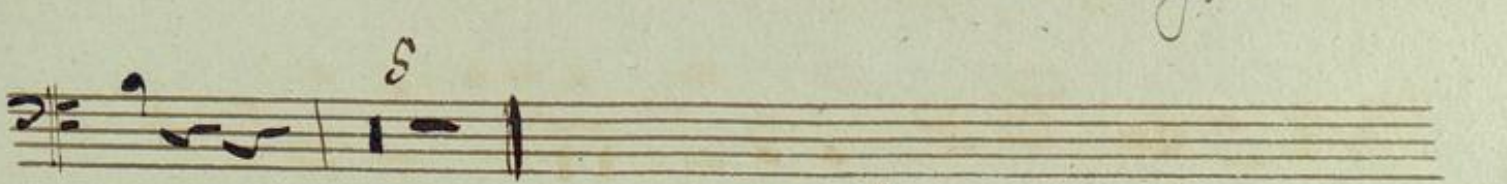
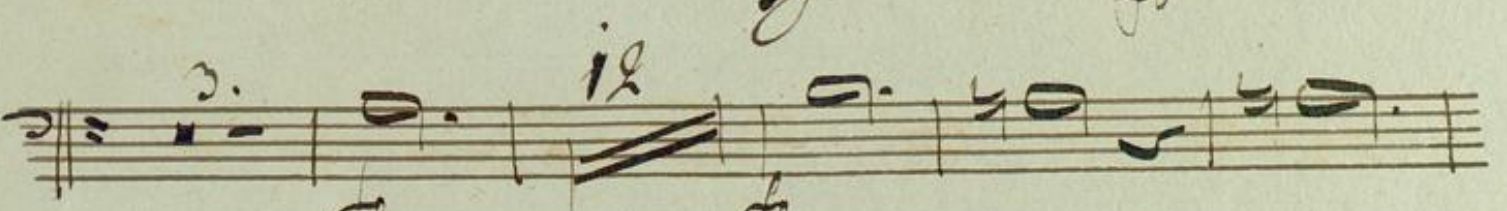
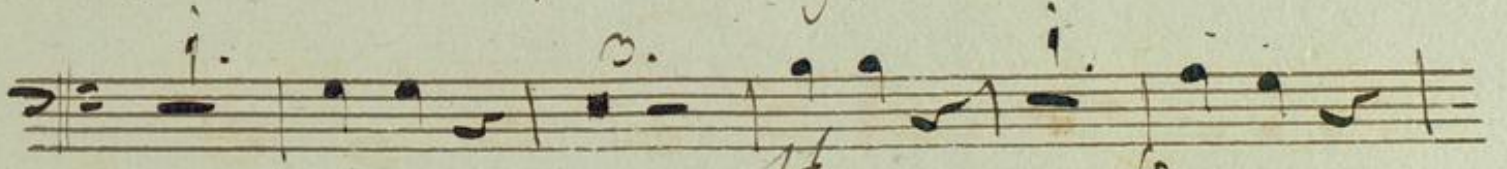
Handwritten musical notation on a single staff, featuring a bass clef, a key signature of two flats, and a common time signature. The notation includes a series of notes with a fermata over the first measure and a dynamic marking of *ff* (fortissimo) below the staff.



fo



Sanctus



V. S. Hosanna