

# **Badische Landesbibliothek Karlsruhe**

**Digitale Sammlung der Badischen Landesbibliothek Karlsruhe**

## **Divertimentos - Don Mus.Ms. 327**

**Dittersdorf, Karl Ditters von**

**[S.l.], 1920 (1920)**

Violine II [7. Exemplar]

**urn:nbn:de:bsz:31-75770**

J. M. Dorf, Gemeinde,  
Geyde, am 22ten  
März  
des J. 18  
Dyngfain

Viel

II



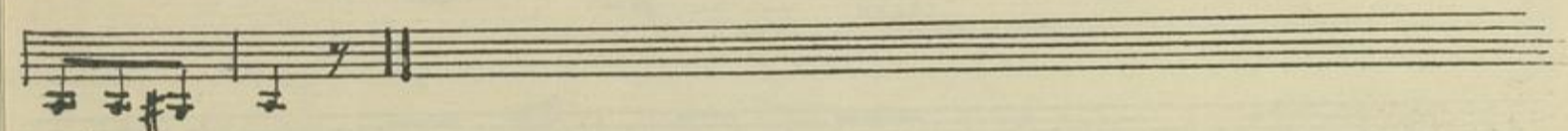
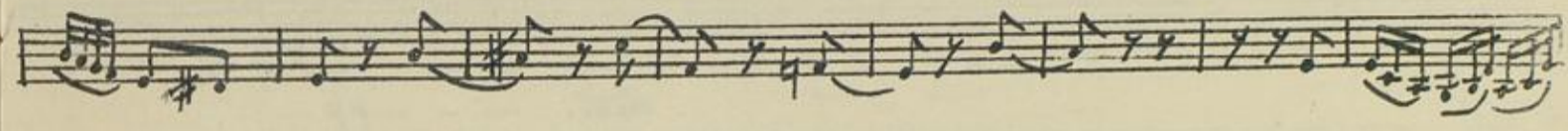
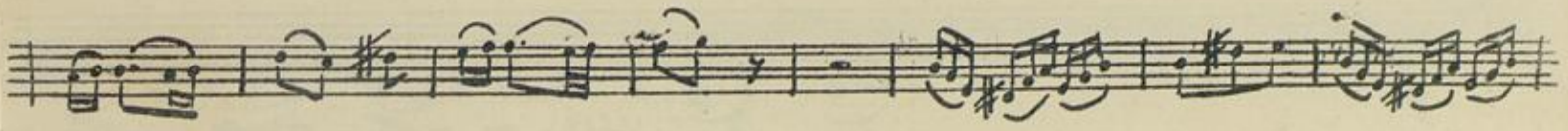
Viol II

Serenade

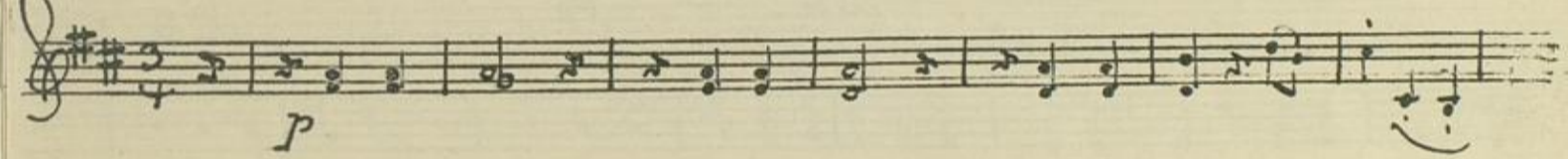
*Pomposo*  
*f*  
*Dimensdorf*  
*simile*

*Trio*  
*p*  
*Mennetto da Capo*

*Andante*  
*p*

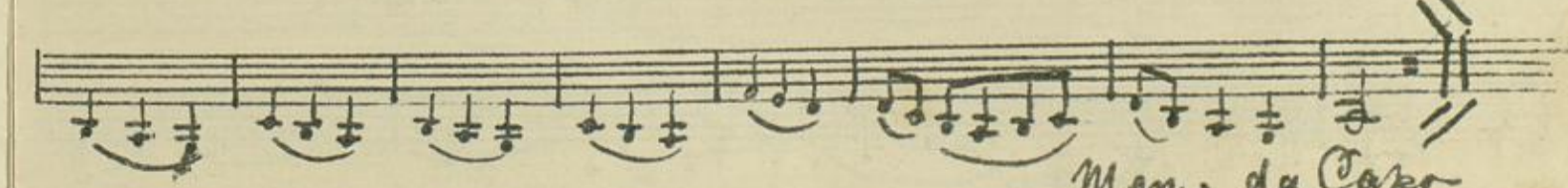


Meno mosso



Trio

*espress.*



Men. da Capo

Andantino

*p* *crec.* - - - - *p*

*crec.* - - - - *pp*

*piu*

*arco* *p*

*crec.* - - - *p*

*crec.* - - - *pp* *piu*

*arco* *p* *crec.* - - - *p*

*crec.* - - - - *pp*

Menuetto

*p* *f*

*p*

*pp*

Handwritten musical score consisting of several staves. The notation includes various notes, rests, and dynamic markings such as *f*, *p*, and *trig*. There are also some handwritten annotations like *rit* and *4*.

Handwritten musical score for a piece titled "Rondeau". The title is written in a decorative, cursive font. The score includes multiple staves with musical notation, dynamic markings (*f*, *p*), and performance instructions such as *arco* and *Men. da Capo*. A measure number "12" is clearly visible in the middle of the score.

Handwritten musical score for the first part of the piece, consisting of ten staves. The notation includes various rhythmic values, accidentals, and dynamic markings such as 'f' and 'p'. The piece concludes with a double bar line and the word 'lunga' written below the staff.

Handwritten musical score for the second part of the piece, consisting of three staves. The first staff is marked 'Pompaso' and 'ff'. The second staff has 'rit. molto' written below it. The piece ends with the word 'Fine' written in a decorative script.

Two empty musical staves at the bottom of the page.

Handwritten musical notation on the left edge of the page, including staves with notes and a 'ff' dynamic marking.



