

# **Badische Landesbibliothek Karlsruhe**

**Digitale Sammlung der Badischen Landesbibliothek Karlsruhe**

## **Der Schiffspatron - Don Mus.Ms. 342a-d**

**Dittersdorf, Karl Ditters von**

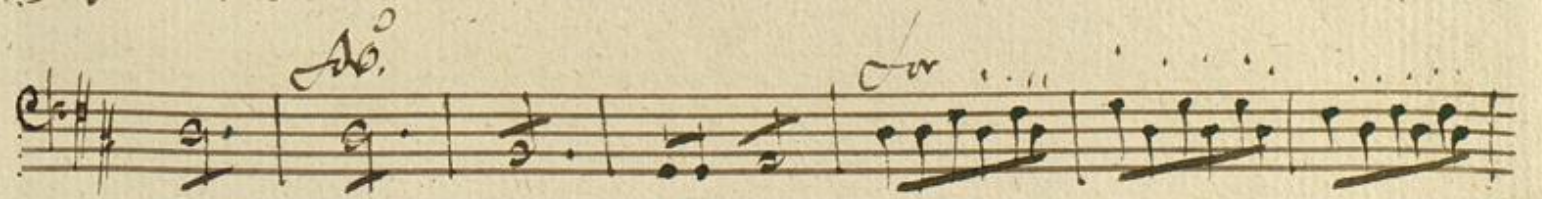
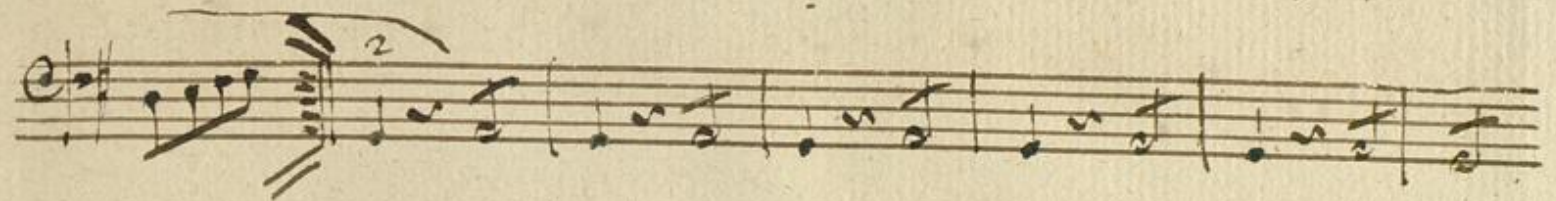
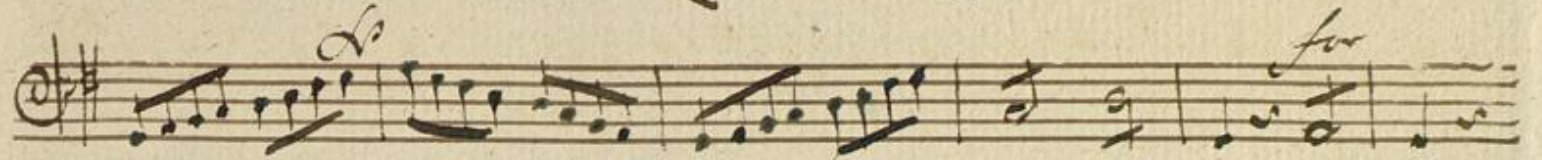
**[S.l.], 1790 (1790c)**

6. Arie

**urn:nbn:de:bsz:31-76056**

Violone

57<sup>61</sup>



*V. S.*

Handwritten musical score on ten staves. The notation includes treble clefs, a key signature of one sharp (F#), and a common time signature (C). The score features a variety of rhythmic values, including eighth and sixteenth notes, and rests. Several dynamic markings are present: *p0* at the top right of the first staff, *for* above the sixth staff, *for p0* above the seventh staff, and *for* above the eighth staff. There are also some handwritten annotations that appear to be '2' and '2' above the eighth staff. The manuscript is written in dark ink on aged, slightly yellowed paper.

Handwritten musical notation on a single staff, featuring a treble clef, a key signature of one sharp (F#), and a common time signature (C). The notation includes a dynamic marking of *po* (piano) and a second ending bracket labeled with the number 2.

Handwritten musical notation on a single staff, featuring a treble clef, a key signature of one sharp (F#), and a common time signature (C). The notation includes a dynamic marking of *pp* (pianissimo) and a fermata over a note.

Handwritten musical notation on a single staff, featuring a treble clef, a key signature of one sharp (F#), and a common time signature (C). The notation includes a dynamic marking of *pp* and a fermata over a note.

Handwritten musical notation on a single staff, featuring a treble clef, a key signature of one sharp (F#), and a common time signature (C). The notation includes a dynamic marking of *pp* and a fermata over a note.

Handwritten musical notation on a single staff, featuring a treble clef, a key signature of one sharp (F#), and a common time signature (C). The notation includes a dynamic marking of *po* and a fermata over a note.

Handwritten musical notation on a single staff, featuring a treble clef, a key signature of one sharp (F#), and a common time signature (C). The notation includes a dynamic marking of *pp* and a fermata over a note.

Handwritten musical notation on a single staff, featuring a treble clef, a key signature of one sharp (F#), and a common time signature (C). The notation includes a dynamic marking of *pp* and a fermata over a note.

Handwritten musical notation on a single staff, featuring a treble clef, a key signature of one sharp (F#), and a common time signature (C). The notation includes a dynamic marking of *pp* and a fermata over a note.

Handwritten musical notation on a single staff, featuring a treble clef, a key signature of one sharp (F#), and a common time signature (C). The notation includes a dynamic marking of *pp*, a second ending bracket labeled with the number 2, and the word *fin* written above the staff.

Handwritten musical notation on a single staff, featuring a treble clef, a key signature of one sharp (F#), and a common time signature (C). The notation includes a dynamic marking of *pp* and the word *Dolci* written below the staff.

Handwritten musical score on ten staves. The notation includes various note values, rests, and dynamic markings. The first staff begins with a treble clef, a key signature of one sharp (F#), and a common time signature (C). A fermata is placed over the first measure, with a '3' written above it. The second staff continues the melodic line. The third and fourth staves feature dynamic markings of *forziss.* (forzando) above and below the notes. The fifth staff has a *po* (piano) marking. The sixth staff contains slanted notes. The seventh and eighth staves feature *forte* markings and *cresc.* (crescendo) markings. The eighth staff also includes a *po* marking and a double bar line with a '2' above it. The ninth staff has *forz.* and *forte* markings. The tenth staff concludes with a series of notes numbered 1 through 6 above them.