

Badische Landesbibliothek Karlsruhe

Digitale Sammlung der Badischen Landesbibliothek Karlsruhe

Der Schiffspatron - Don Mus.Ms. 342a-d

Dittersdorf, Karl Ditters von

[S.l.], 1790 (1790c)

2. Arie

urn:nbn:de:bsz:31-76056

Adagio ma non troppo.

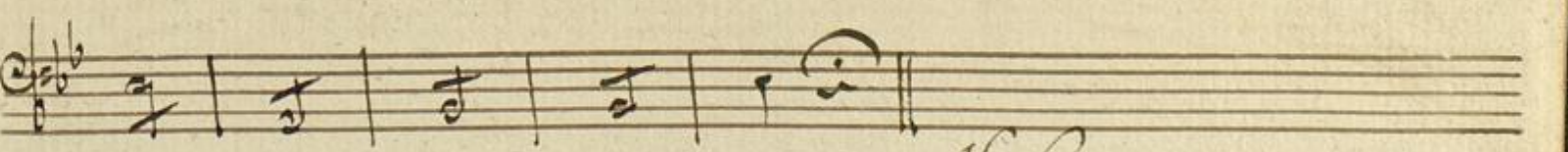
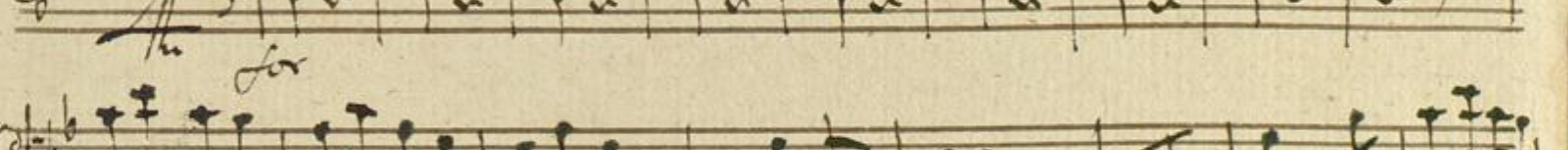
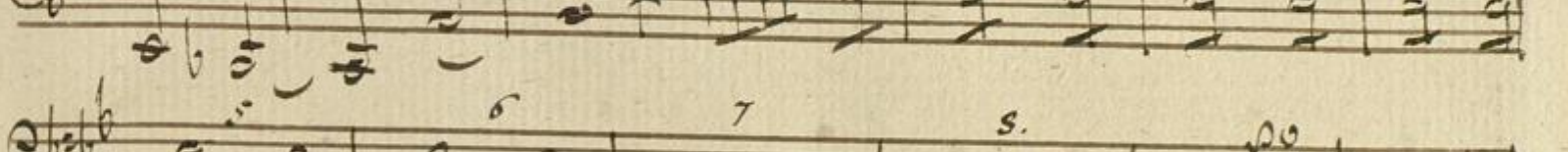
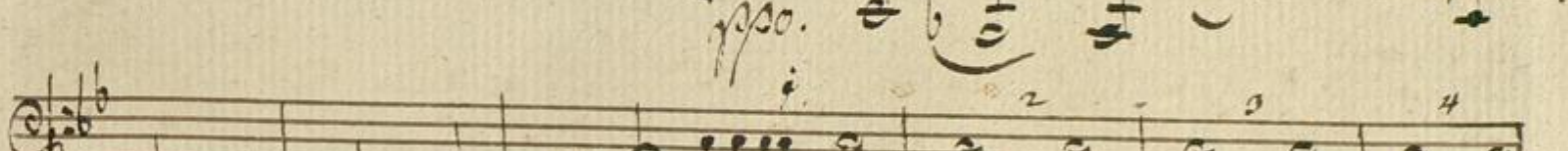
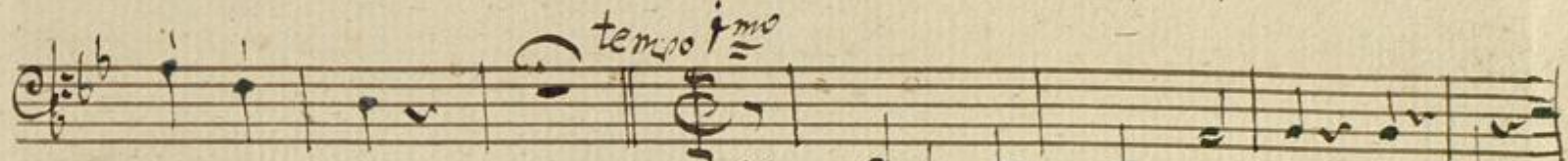
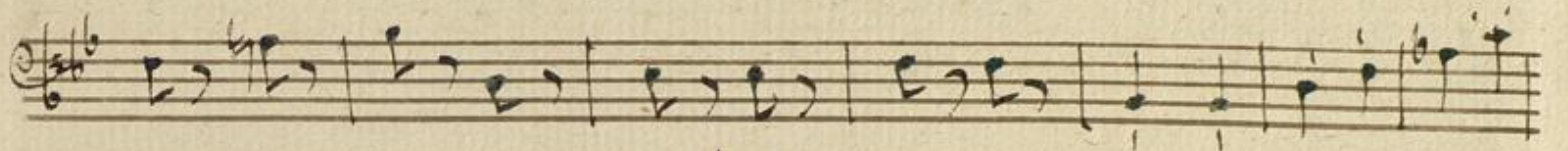
No. 2, aria

Handwritten musical score for the first system, consisting of five staves. The notation includes treble and bass clefs, a key signature of one flat, and a common time signature. The first staff begins with a dynamic marking of *pp.* (pianissimo). The second staff contains a melodic line with various note values and rests. The third staff features a more complex melodic line with some accidentals. The fourth staff is a bass line with fingerings indicated by numbers 2 through 7. The fifth staff continues the bass line with a dynamic marking of *pp.* and a *rescendo* marking below the staff.

Handwritten musical score for the second system, consisting of four staves. The notation continues from the first system. The first staff of this system includes a dynamic marking of *pp.* and a tempo change marking of *allegro molto.* The second staff continues the melodic line. The third staff features a melodic line with some accidentals and a dynamic marking of *ff* (fortissimo) above it. The fourth staff is a bass line with dynamic markings of *for* and *ff* above it.

Violone.

69
2.)



H. L.

allegretto. *so.*

Handwritten musical score for the first system, consisting of six staves. The first staff begins with a treble clef, a key signature of one flat (B-flat), and a 3/8 time signature. The music is written in a cursive hand with various note values, rests, and dynamic markings like 'so.' and 'p'.

allegretto
Op. 9. aria

Handwritten musical score for the second system, consisting of four staves. The first staff begins with a treble clef, a key signature of one flat (B-flat), and a 3/8 time signature. The music continues in the same cursive hand as the first system.