

# **Badische Landesbibliothek Karlsruhe**

**Digitale Sammlung der Badischen Landesbibliothek Karlsruhe**

## **Symphonies - Don Mus.Ms. 460**

**Filtz, Anton**

**[S.l.], 1772 (1772c)**

**urn:nbn:de:bsz:31-77933**

Mus. No. 460

Symphonia Ex D.  
à  
Violino Primo.  
Violino Secundo.  
Alto Viola.  
Cornu Primo.  
Cornu Secundo.  
Con  
Basso.

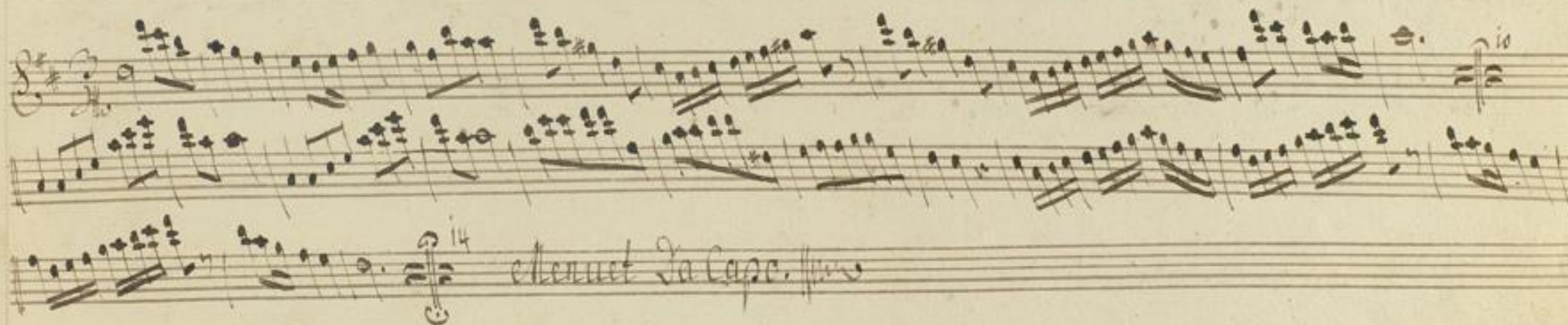
Del signore Fils

Ad me Franciscum Carolum  
Ruchle. Rhetorices Candidat.  
Anno 1772.



*Allo assai**Violino Primo**Ex 3.*



*Menueto.**Trio.**Menuet La Caze.  $\text{ff}$* *Segue Andante  $\text{ff}$*



*Andante*

*Piano*

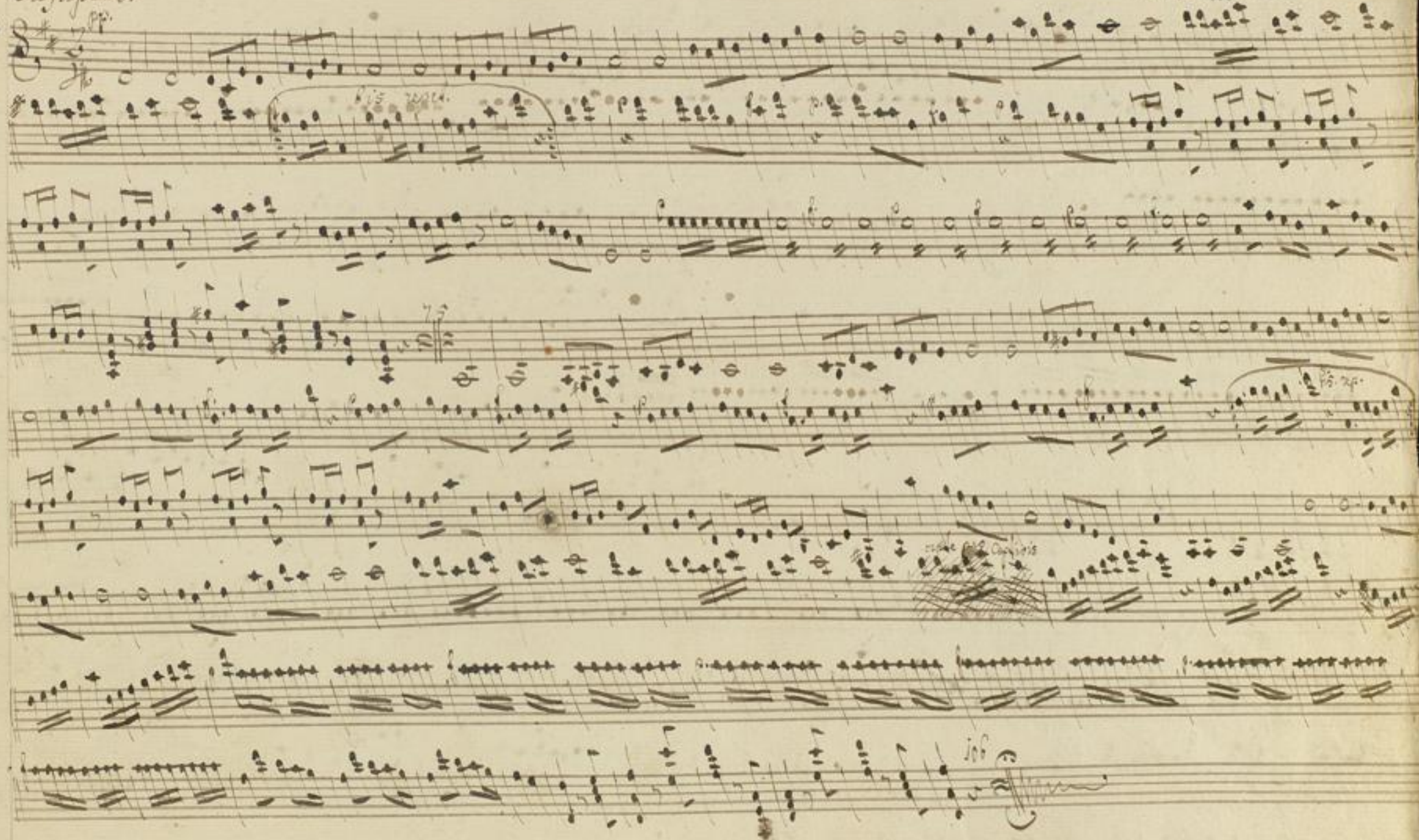
Handwritten musical score for piano, featuring five staves of music. The notation includes various note values, rests, and dynamic markings. The first staff begins with a treble clef and a key signature of one flat. The music is written in a flowing, melodic style with frequent slurs and ties. The fifth staff ends with a double bar line and a repeat sign.

*Segue Prestissimo*



Allegretto.

Inv. No. 460





Alto assai

## Violino Secondo

E. 2.

Handwritten musical score for Violino Secondo, page 7. The score is written on ten staves. The first staff begins with a treble clef, a key signature of one sharp (F#), and a common time signature (C). The notation includes various musical symbols such as notes, rests, and accidentals. A section of the score is crossed out with diagonal lines and the words "male per Capriccio" written above it. The score concludes with a double bar line and a final note.

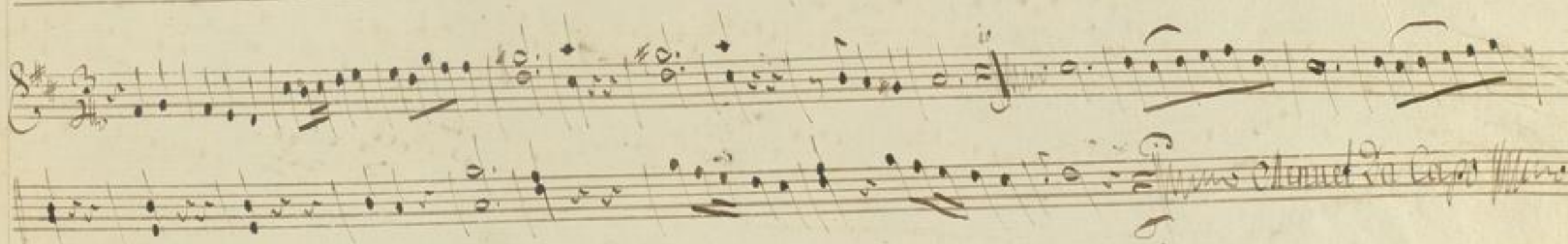
Alto Legno chiaro V. 2.



# Allegretto



# Trio



# Segue Andante

vol. 1. f. 12.



*ppp Andante pp**ppp Segue Prestissimo pp*



*Prestissimo.*

4

*Mus. No 460*

A handwritten musical score on ten staves. The notation is in a historical style, featuring various note values, rests, and dynamic markings. The first staff begins with a treble clef and a key signature of one sharp (F#). The music is written in a cursive, flowing style. There are several measures with multiple notes beamed together. The score concludes with a double bar line and a final note on the tenth staff.

*il fine.*



*Mus. Ms. 460*



Alto assai

Viola Di alto.

C. 3

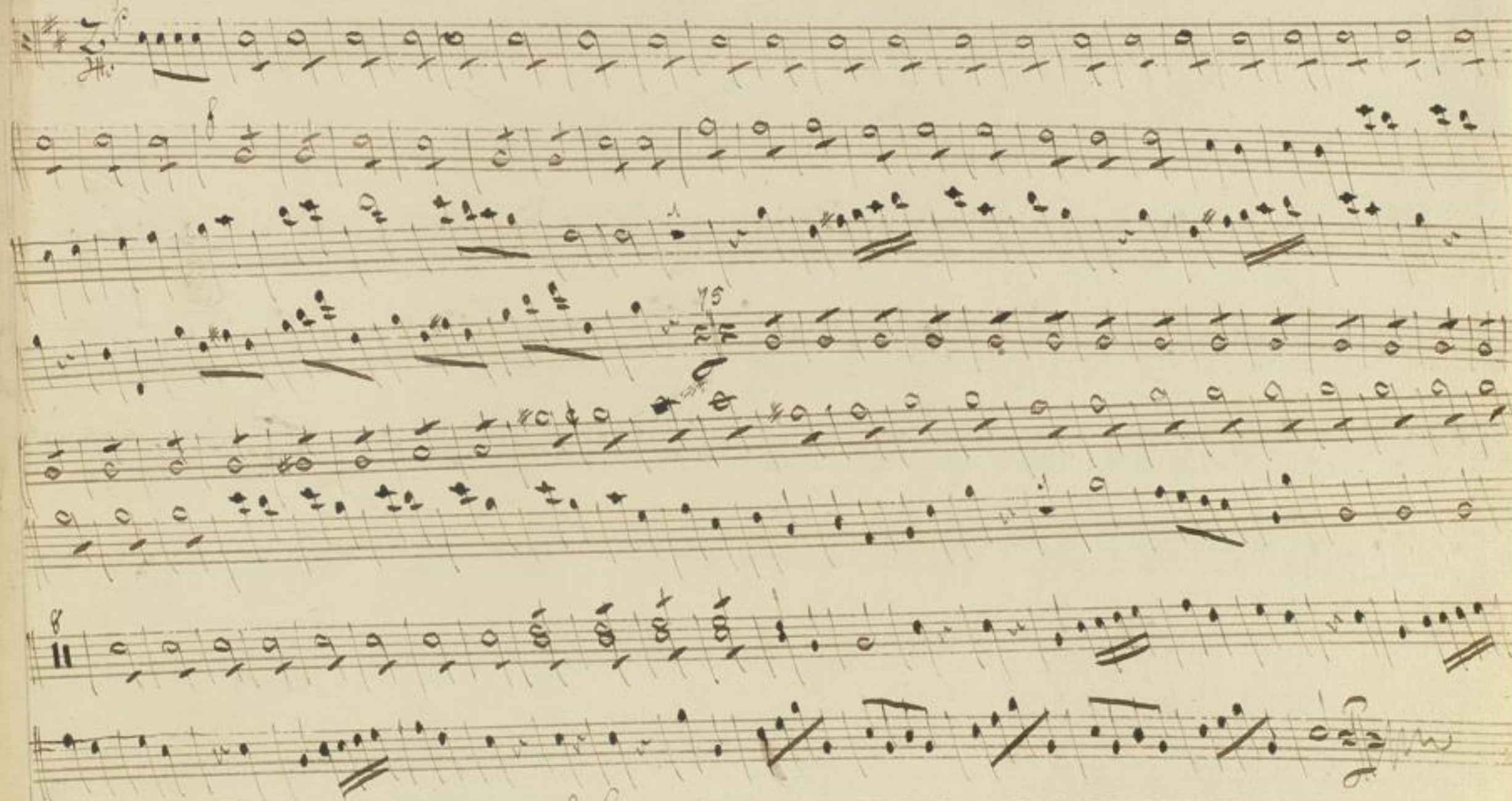
Handwritten musical score for Viola Di alto. The score consists of multiple staves with notes, rests, and dynamic markings. The first staff begins with a treble clef and a key signature of one sharp (F#). The notation includes various note values, rests, and slurs. The score is written in a cursive, handwritten style. The first staff is labeled "Alto assai". The second staff is labeled "Viola Di alto.". The third staff is labeled "C. 3". The fourth staff is labeled "Alto assai". The fifth staff is labeled "Viola Di alto.". The sixth staff is labeled "C. 3". The seventh staff is labeled "Alto assai". The eighth staff is labeled "Viola Di alto.". The ninth staff is labeled "C. 3". The tenth staff is labeled "Alto assai". The eleventh staff is labeled "Viola Di alto.". The twelfth staff is labeled "C. 3". The thirteenth staff is labeled "Alto assai". The fourteenth staff is labeled "Viola Di alto.". The fifteenth staff is labeled "C. 3". The sixteenth staff is labeled "Alto assai". The seventeenth staff is labeled "Viola Di alto.". The eighteenth staff is labeled "C. 3". The nineteenth staff is labeled "Alto assai". The twentieth staff is labeled "Viola Di alto.". The twenty-first staff is labeled "C. 3". The twenty-second staff is labeled "Alto assai". The twenty-third staff is labeled "Viola Di alto.". The twenty-fourth staff is labeled "C. 3". The twenty-fifth staff is labeled "Alto assai". The twenty-sixth staff is labeled "Viola Di alto.". The twenty-seventh staff is labeled "C. 3". The twenty-eighth staff is labeled "Alto assai". The twenty-ninth staff is labeled "Viola Di alto.". The thirtieth staff is labeled "C. 3". The thirty-first staff is labeled "Alto assai". The thirty-second staff is labeled "Viola Di alto.". The thirty-third staff is labeled "C. 3". The thirty-fourth staff is labeled "Alto assai". The thirty-fifth staff is labeled "Viola Di alto.". The thirty-sixth staff is labeled "C. 3". The thirty-seventh staff is labeled "Alto assai". The thirty-eighth staff is labeled "Viola Di alto.". The thirty-ninth staff is labeled "C. 3". The fortieth staff is labeled "Alto assai". The forty-first staff is labeled "Viola Di alto.". The forty-second staff is labeled "C. 3". The forty-third staff is labeled "Alto assai". The forty-fourth staff is labeled "Viola Di alto.". The forty-fifth staff is labeled "C. 3". The forty-sixth staff is labeled "Alto assai". The forty-seventh staff is labeled "Viola Di alto.". The forty-eighth staff is labeled "C. 3". The forty-ninth staff is labeled "Alto assai". The fiftieth staff is labeled "Viola Di alto.". The fifty-first staff is labeled "C. 3". The fifty-second staff is labeled "Alto assai". The fifty-third staff is labeled "Viola Di alto.". The fifty-fourth staff is labeled "C. 3". The fifty-fifth staff is labeled "Alto assai". The fifty-sixth staff is labeled "Viola Di alto.". The fifty-seventh staff is labeled "C. 3". The fifty-eighth staff is labeled "Alto assai". The fifty-ninth staff is labeled "Viola Di alto.". The sixtieth staff is labeled "C. 3". The sixty-first staff is labeled "Alto assai". The sixty-second staff is labeled "Viola Di alto.". The sixty-third staff is labeled "C. 3". The sixty-fourth staff is labeled "Alto assai". The sixty-fifth staff is labeled "Viola Di alto.". The sixty-sixth staff is labeled "C. 3". The sixty-seventh staff is labeled "Alto assai". The sixty-eighth staff is labeled "Viola Di alto.". The sixty-ninth staff is labeled "C. 3". The seventieth staff is labeled "Alto assai". The seventy-first staff is labeled "Viola Di alto.". The seventy-second staff is labeled "C. 3". The seventy-third staff is labeled "Alto assai". The seventy-fourth staff is labeled "Viola Di alto.". The seventy-fifth staff is labeled "C. 3". The seventy-sixth staff is labeled "Alto assai". The seventy-seventh staff is labeled "Viola Di alto.". The seventy-eighth staff is labeled "C. 3". The seventy-ninth staff is labeled "Alto assai". The eightieth staff is labeled "Viola Di alto.". The eighty-first staff is labeled "C. 3". The eighty-second staff is labeled "Alto assai". The eighty-third staff is labeled "Viola Di alto.". The eighty-fourth staff is labeled "C. 3". The eighty-fifth staff is labeled "Alto assai". The eighty-sixth staff is labeled "Viola Di alto.". The eighty-seventh staff is labeled "C. 3". The eighty-eighth staff is labeled "Alto assai". The eighty-ninth staff is labeled "Viola Di alto.". The ninetieth staff is labeled "C. 3". The ninety-first staff is labeled "Alto assai". The ninety-second staff is labeled "Viola Di alto.". The ninety-third staff is labeled "C. 3". The ninety-fourth staff is labeled "Alto assai". The ninety-fifth staff is labeled "Viola Di alto.". The ninety-sixth staff is labeled "C. 3". The ninety-seventh staff is labeled "Alto assai". The ninety-eighth staff is labeled "Viola Di alto.". The ninety-ninth staff is labeled "C. 3". The hundredth staff is labeled "Alto assai".

Alto assai



*Andante**Segue Prestissimo**Volte 100*



*Resistimo*

*fine mw*



Allo afai

Basso.

Ex 2.

Handwritten musical score for Bassoon, featuring multiple staves with notes, rests, and dynamic markings. The score includes a section marked "Allo afai" and a section marked "Adnuello". The notation is in a historical style, with various note values and rests. The score is written on a single page, with the right page visible on the right edge.

Adnuello da Cape per  
 per segue Andante Moss



Andante



Fin. Seque Prestissimo

volti subito



*Prestissimo.*

Handwritten musical score on aged paper, featuring multiple staves with notes, rests, and dynamic markings. The tempo is marked *Prestissimo.* The score includes measures numbered 26, 75, and 18. The notation is in a historical style, likely from the 18th or 19th century. The final measure is marked *fine* with a double bar line.

