

Badische Landesbibliothek Karlsruhe

Digitale Sammlung der Badischen Landesbibliothek Karlsruhe

Ite corde impavido - Don Mus.Ms. 413

Faitelli, Vigilius Blasius

[S.l.], 1770 (1770c)

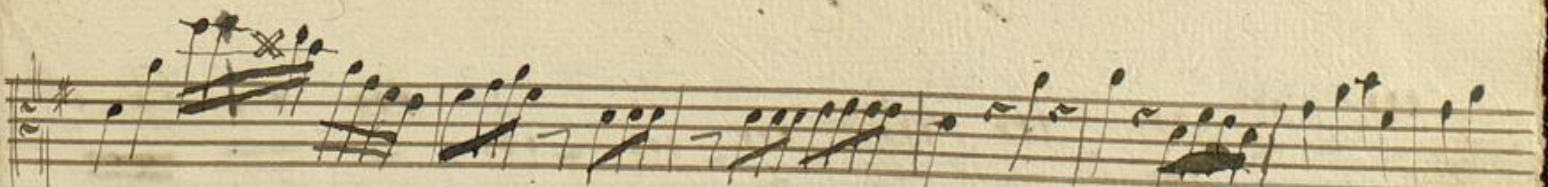
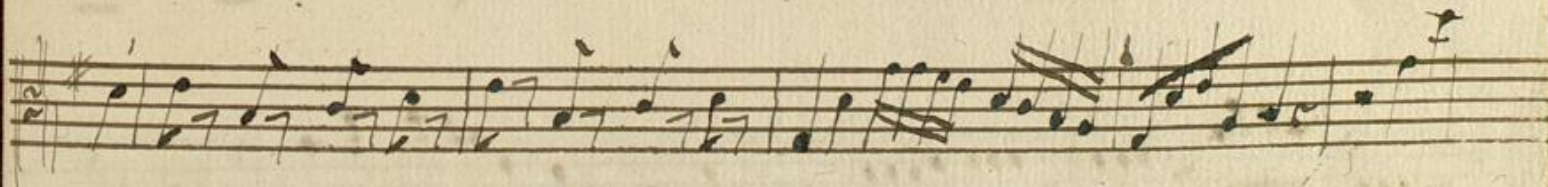
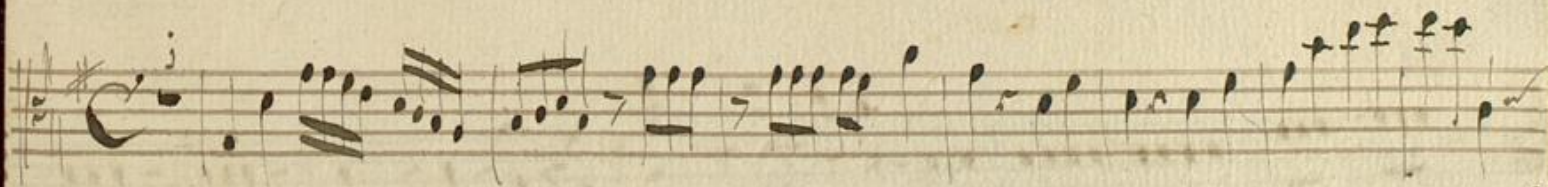
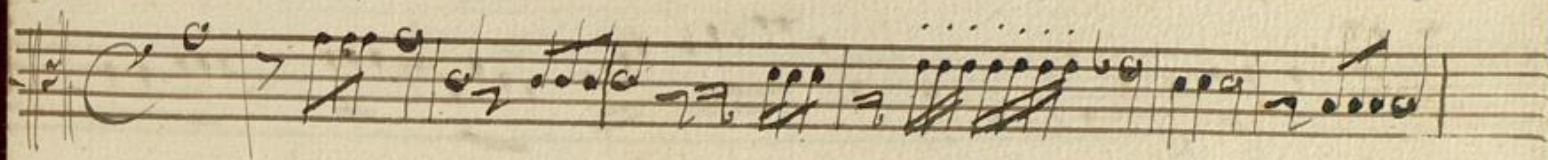
Viola

urn:nbn:de:bsz:31-77475

Viola obbligato

Ms. No 413

1



A page of handwritten musical notation on seven staves. The notation is in a single system, likely for a keyboard instrument. The key signature is one sharp (F#), and the time signature is not clearly visible but appears to be common time. The music features a variety of rhythmic patterns, including eighth and sixteenth notes, and rests. There are several dynamic markings, including 'p' (piano) and 'f' (forte). The paper shows signs of age, with some staining and foxing. On the right edge, the word 'Alto' is written vertically in cursive.

Handwritten musical notation on a single staff. It begins with a treble clef, a key signature of one sharp (F#), and a common time signature (C). The notation includes several groups of beamed notes and rests. A handwritten number "30." is written above the staff, and the words "Tria Da Capo." are written in cursive below the staff.

Handwritten musical notation on a single staff. It begins with a treble clef, a key signature of one sharp (F#), and a common time signature (C). The tempo marking "Allegro" is written in cursive above the staff. The notation consists of a series of beamed notes, some with accents. The word "Alleluia." is written in cursive below the staff.

Handwritten musical notation on a single staff. It begins with a treble clef, a key signature of one sharp (F#), and a common time signature (C). The notation features a series of beamed notes with accents, followed by a few individual notes.

Handwritten musical notation on a single staff. It begins with a treble clef, a key signature of one sharp (F#), and a common time signature (C). The notation consists of a series of beamed notes with accents, followed by a few individual notes.

Handwritten musical notation on a single staff. It begins with a treble clef, a key signature of one sharp (F#), and a common time signature (C). The notation consists of a series of beamed notes with accents, followed by a few individual notes.

Handwritten musical notation on a single staff. It begins with a treble clef, a key signature of one sharp (F#), and a common time signature (C). The notation consists of a series of beamed notes with accents, followed by a few individual notes.

Handwritten musical notation on a single staff. It begins with a treble clef, a key signature of one sharp (F#), and a common time signature (C). The notation consists of a series of beamed notes with accents, followed by a few individual notes.

147.