

Badische Landesbibliothek Karlsruhe

Digitale Sammlung der Badischen Landesbibliothek Karlsruhe

2 Partitas - Don Mus.Ms. 472

[S.l.], 1780 (1780c)

Partita; Es-Dur

urn:nbn:de:bsz:31-78655

Parthia 2:

Allegro:

Handwritten musical score for Parthia 2, featuring multiple staves with notes, rests, and dynamic markings such as *f*, *p*, *Cres*, and *Dolce*. The score includes various musical notations such as slurs, ties, and repeat signs. The piece is marked *Allegro*.



Menuetto $\text{G} \flat \frac{3}{4}$ *f*

p

p

f

p

f

f *p* *f* *p* *f*

f *p* *f* *p* *f* *p*

Trio $\text{G} \flat \frac{3}{4}$ *p*

f *p* *f* *p* *f*

f *p* *f* *p* *f* *p*

Men da Capo:

f



Adagio:

Handwritten musical score for Adagio, consisting of eight staves. The notation includes various note values, rests, and dynamic markings such as *pp*, *f*, *ppp*, and *poi: f*. The music is written in a single system across the page.



Menuetto $\frac{3}{4}$

pp:

p:

f:

Trio $\frac{3}{4}$

p:

f:

p:

f:

p:

cres:

f:

p:

Men da Capo:



Presto:

A handwritten musical score for a piece titled "Presto". The score is written on eight staves of five-line music paper. The notation includes treble clefs, a 3/8 time signature, and various rhythmic values such as eighth and sixteenth notes, as well as rests. The music is characterized by rapid passages and complex rhythmic patterns. There are several accidentals (sharps and flats) throughout the score. A double bar line with repeat dots is visible on the fourth staff. The paper shows signs of age, including some staining and foxing. A blue circular stamp is located in the bottom right corner of the page.



11

Parthia 2:
Allegro:

Handwritten musical score for Parthia 2, Allegro. The score consists of eight staves of music. The first staff begins with a forte (f.) dynamic. The second staff includes a piano (p.) dynamic and a crescendo (Cres.) marking. The third staff features piano (p.) and forte (f.) dynamics, with a repeat sign and first/second endings. The fourth staff includes piano (p.) and forte (f.) dynamics, with first and second endings. The fifth staff starts with fortissimo (ff) and includes piano (p.), crescendo (Cres.), and forte (f.) markings. The sixth staff includes piano (p.) and fortissimo (ff) dynamics. The seventh staff includes fortissimo (ff) and forte (f.) dynamics. The eighth staff concludes with fortissimo (ff) and forte (f.) dynamics.



BLB

Badische Landesbibliothek
Karlsruhe

Menuetto $\text{G} \flat \frac{3}{4}$ *f* *pp* *f*

p

f *p* *f* *p* *f*

Trio $\text{G} \flat \frac{3}{4}$ *mp* *f* *p* *f* *p* *f*

p *pp* *f* *p* *f* *p* *f* *Men. Se.*



Adagio:

Handwritten musical score for a piece in Adagio tempo. The score consists of seven staves of music. The notation includes various note values, rests, and dynamic markings such as *pp*, *p*, *mf*, and *mol.*. The music is written in a single system across the seven staves. The first staff begins with a treble clef and a common time signature. The piece concludes with a double bar line and a repeat sign at the end of the seventh staff.



Menuetto $\text{G} \flat \frac{3}{4}$ *p.*

f.

p.

Trio $\text{G} \flat \frac{3}{4}$ *p.*

f.

p. *f.* *p.* *f.* *p.* *Cres.*

f. *p.*

f.

Manda Capo.



Presto:

A handwritten musical score for a Presto movement, consisting of seven staves of music. The notation is in a single system, likely for a single melodic line. The first staff begins with a treble clef and a common time signature (C). The music is written in a cursive hand, characteristic of the 18th or 19th century. The score includes various rhythmic values, including eighth and sixteenth notes, and rests. There are several repeat signs (double bars with dots) and a double bar line with repeat dots at the end of the piece. The paper shows signs of age, including some staining and discoloration.



Parthia
Allegro:

Handwritten musical score for 'Parthia' in Allegro tempo. The score consists of eight staves of music. The first staff begins with a forte (*f*) dynamic marking. The second staff includes a *cre:* (crescendo) marking. The third staff contains a double bar line and a series of rhythmic markings: *f*, *10*, *f*, *10*, *f*, *10*, *f*, *10*, *f*, *10*. The fourth staff has *f*, *10*, *f*, and *10* markings. The fifth staff starts with a *pi:* (piano) marking and a *cre:* marking. The sixth staff has a *pi:* marking. The seventh staff has a *pi:* marking. The eighth staff begins with a *f* marking. The music is written in a treble clef with a key signature of one sharp (F#) and a common time signature (C).



Menuetto *All.* 3/4 b b

Trio *All.* 3/4 b b

Menda Capo:



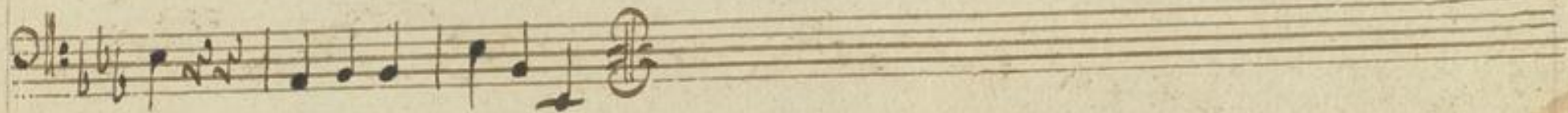
Adagio:

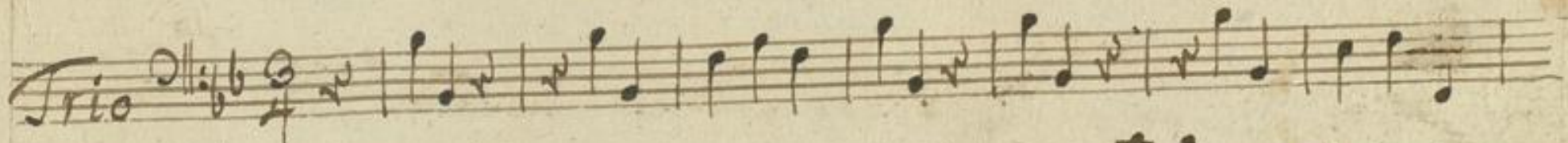
Handwritten musical score for Adagio, featuring six staves of music. The notation includes various notes, rests, and dynamic markings such as *p*, *pp*, and *f*. The score is written in a single system with six staves. The first staff begins with a treble clef, a key signature of two flats, and a common time signature. The music is characterized by a slow, melodic line with some chromaticism and a steady accompaniment. The piece concludes with a double bar line and a repeat sign.

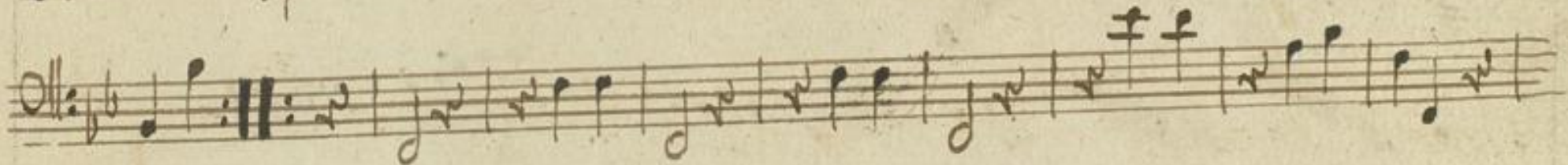



Menuetto 

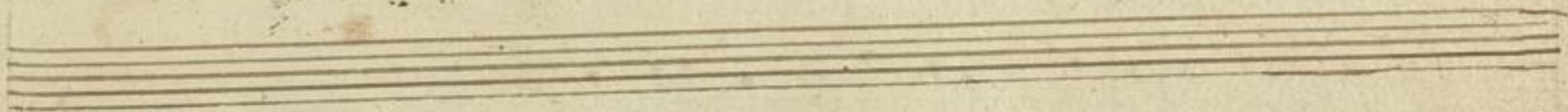




Trio 










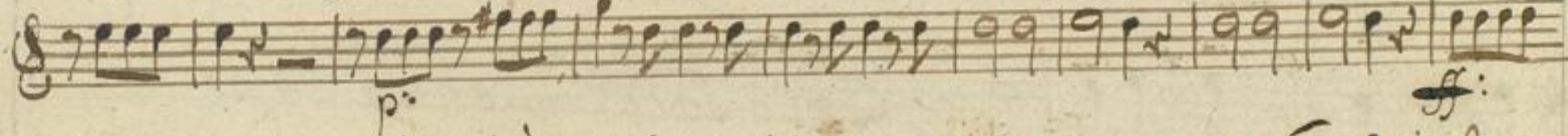
Presto:

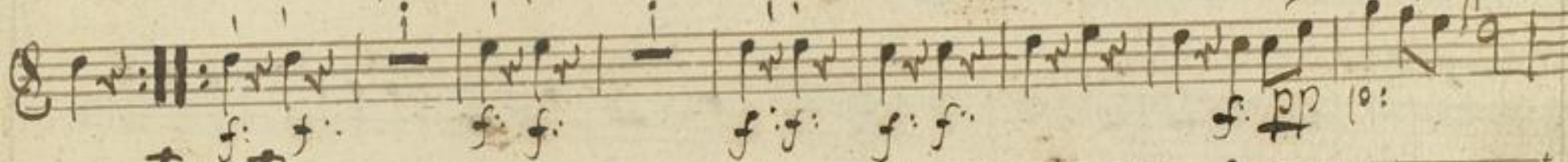
A handwritten musical score consisting of seven staves. The notation is in a single system, likely for a single instrument. The time signature is 3/8. The music is written in a cursive hand. The first staff begins with a treble clef, a key signature of one flat (B-flat), and a 3/8 time signature. The notation includes various note values, rests, and dynamic markings such as 'f' (forte) and 'p' (piano). The fourth staff contains a double bar line with repeat dots, followed by a section of music with a dense, cross-hatched texture. The piece concludes with a double bar line and a final cadence symbol.

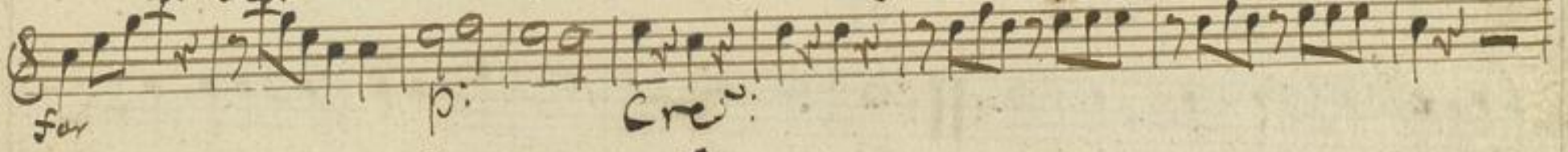


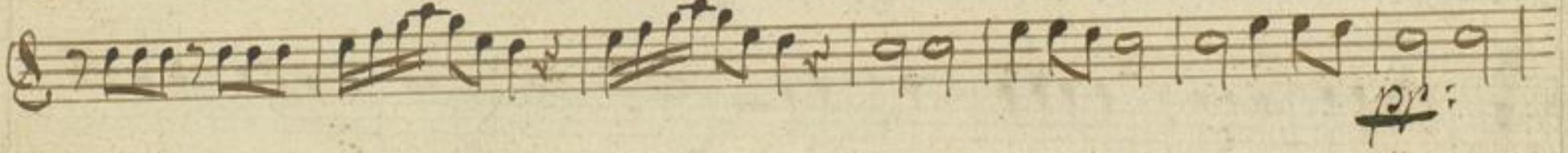
4  Allemande da Capo:

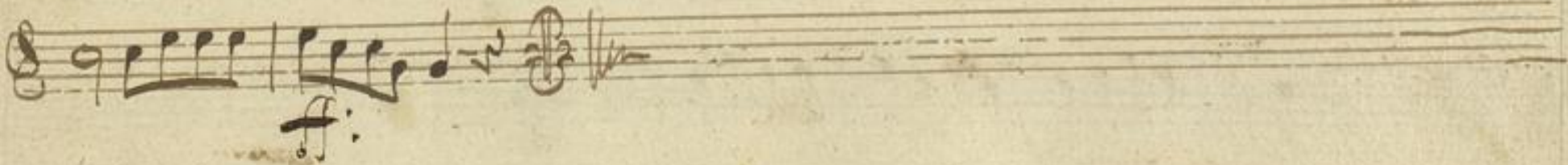
Allegro Parthia 2 
f. p. Cresc.:


p. f.


f. f. f. f. f. f. f. pp 10:


for p. Cresc.


pp:


f.



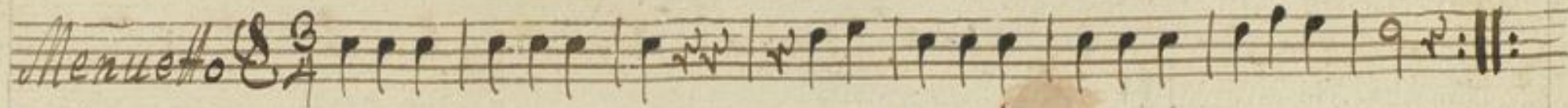
Men:


Handwritten musical notation for the first system, consisting of two staves. The music is in 3/4 time. The first staff begins with a treble clef and a 3/4 time signature. The notation includes various note values (quarter, eighth, and sixteenth notes) and rests. There are handwritten annotations 'p' and 'f' below the notes. A double bar line with repeat dots is present. The second staff continues the melody with similar note values and rests, also featuring 'p' and 'f' markings.

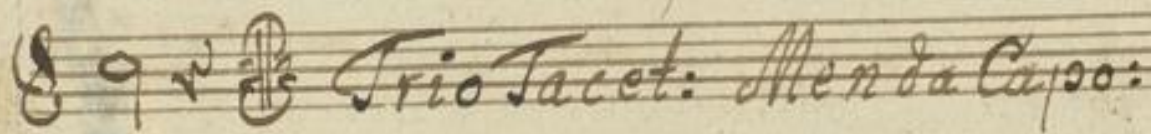
Trio Tacet: Men da Capo

Adagio:

Handwritten musical notation for the second system, consisting of four staves. The music is in 4/4 time. The first staff begins with a treble clef and a 4/4 time signature. The notation features half notes and quarter notes, with dynamic markings 'p' and 'f' below. The second staff continues the melody with similar note values and rests, also featuring 'p' and 'f' markings. The third staff continues the melody with similar note values and rests, also featuring 'p' and 'f' markings. The fourth staff concludes the piece with a double bar line and a final cadence.

Menuetto 

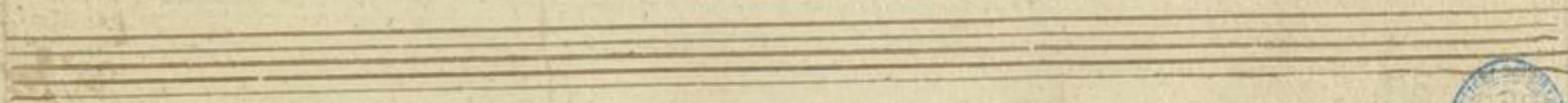
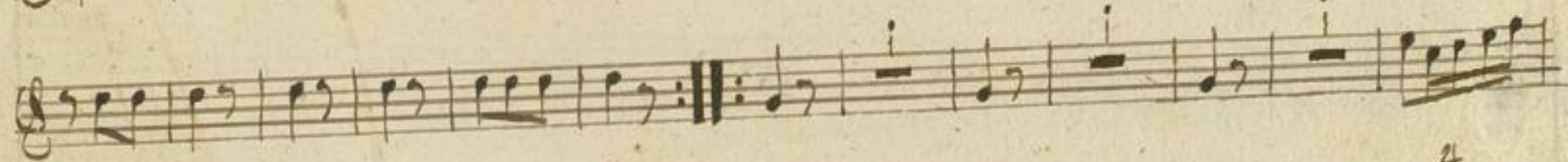
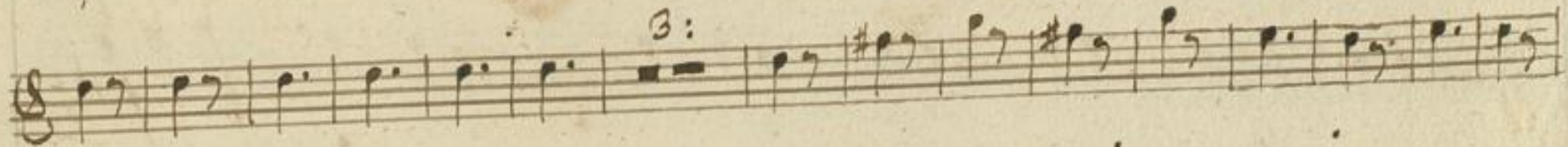


 *Trio Tacet: Men da Capo:*





Presto:



4
Allemande da Capo:

Allegro:
Partia 2: *f.* *p.* *cres.*

p.

f. *f.* *f.* *f.* *f.* *f.* *f.* *f.* *f.* *f.* *p.*

f. *p.* *cres.*

p. *f.*



Menuetto 3/4

Handwritten musical notation for the first staff of the Minuet, featuring treble clef and 3/4 time signature. Includes dynamic markings *pp* and *for*.

Handwritten musical notation for the second staff of the Minuet. Includes dynamic markings *pp* and *for*.

Handwritten musical notation for the third staff of the Minuet. Includes dynamic markings *pp* and *for*.

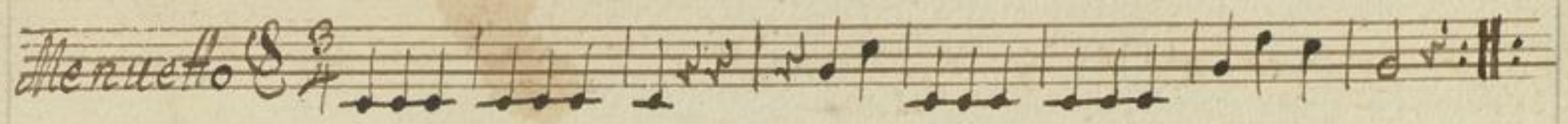
Trio Tacet: Mento a Capso

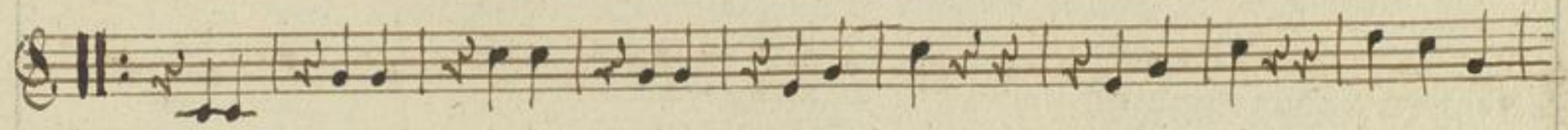
Handwritten musical notation for the first staff of the Trio section, featuring treble clef and common time signature. Includes dynamic markings *pp*, *f*, and *ff*.


Handwritten musical notation for the second staff of the Trio section. Includes dynamic markings *pp* and *f*.

Handwritten musical notation for the third staff of the Trio section, ending with a double bar line and repeat sign.



Menuetto 



 *Trio Tacet: Mend a Capo:*

Empty musical staves for the Trio section.

Presto:

Handwritten musical score for six staves. The notation includes treble clefs, a 3/8 time signature, and various rhythmic values such as eighth and sixteenth notes. It features a repeat sign with first and second endings, a triplet of eighth notes, and a section of the staff filled with a cross-hatch pattern. The piece concludes with a double bar line and a repeat sign.

