

# **Badische Landesbibliothek Karlsruhe**

**Digitale Sammlung der Badischen Landesbibliothek Karlsruhe**

## **Orfeo ed Euridice. Excerpts - Don Mus.Ms. 538**

**Gluck, Christoph Willibald**

**[S.l.], 1820 (1820c)**

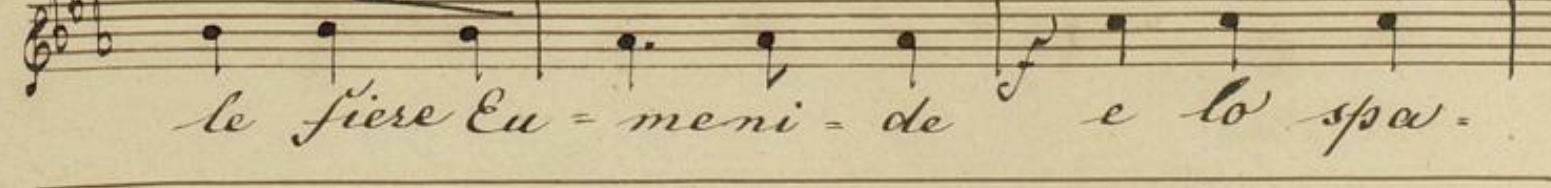
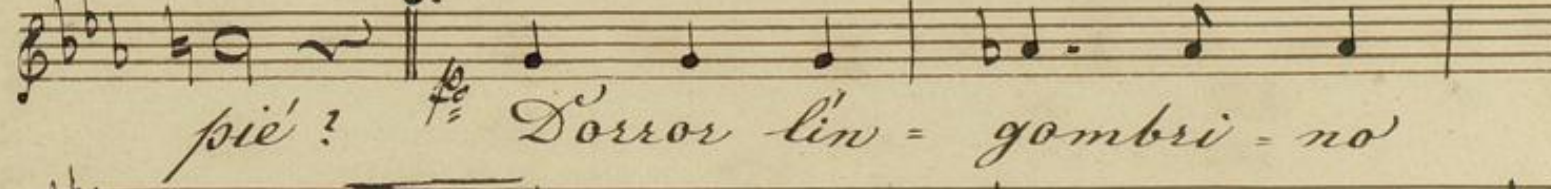
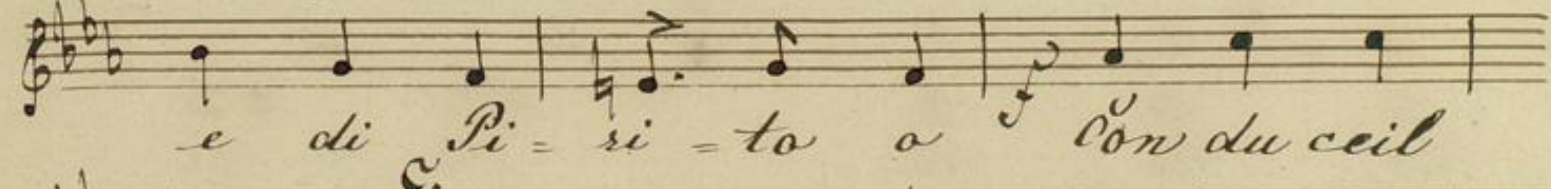
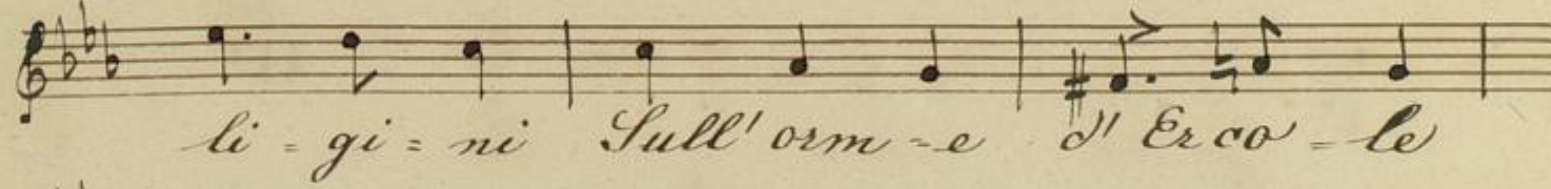
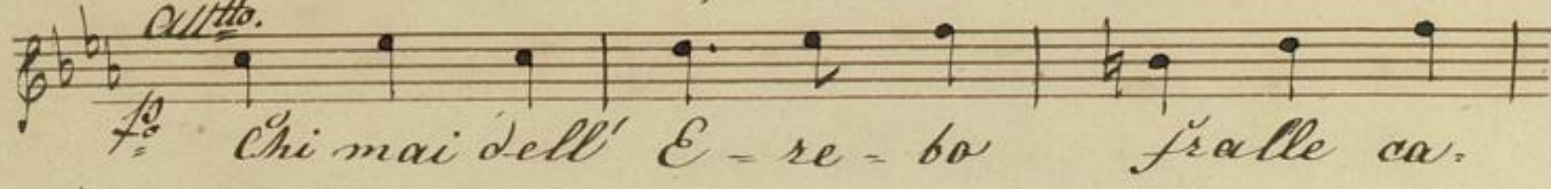
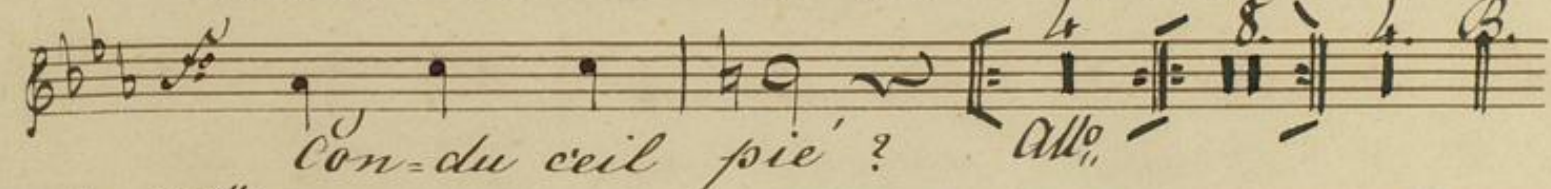
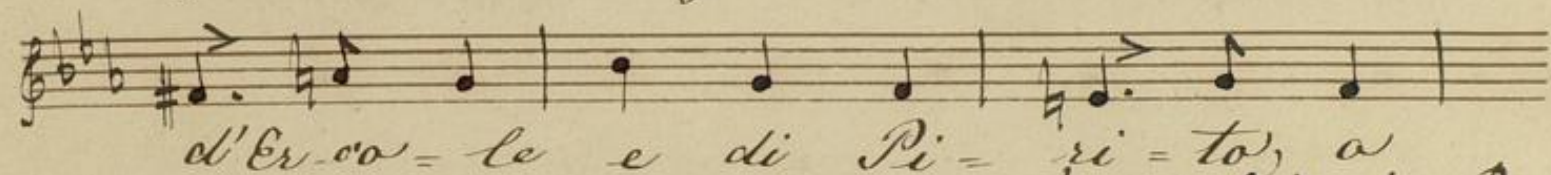
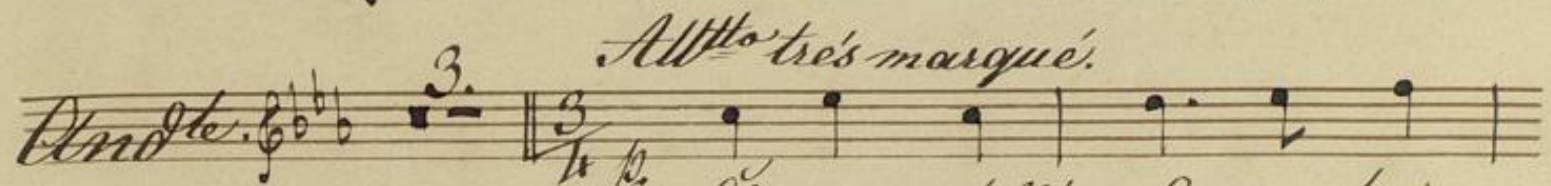
Tenor [11. Exemplar]

**urn:nbn:de:bsz:31-78513**



Chœur d'Orphée  
von C. Gluck.

Tenor





venti-no gli urli di Cer-be-ro

seun Dio non e E-lo spa:

venti-no gli urli di Cer-be-ro

seun Dio non e. Dor-ror l'in.

gombri: no le fiere Eu-me-ni de

e lo spa: venti-no gli urli di

Cer-be-ro seun Dio non e'. 2. 10.

No.. No.. No..

No.. No.. No.. No.. No..

No.. No.. No.. No.. No..

No..

Empty musical staves



*Maestoso.*

Mise-ro gio-vi-ne! Che vuoi, che  
 me-di-ti. *Alto* Altro non a-bi-ta  
 Che lut-to e-gemi-to in queste or-ri-bi-li  
 Sogli fu-ne-ste. Che vuoi che me-di-ti.  
 Mise-ro gio-vi-ne Che!  
 Altro non a-bi-ta che lut-to e-  
 gemi-to Che-lut-to e-gemi-to!  
 Che-lut-to e-gemi-to in queste or-  
 ri-bi-le Sogli fu-nes-  
 = = te. *f.* *Lento.* 23.



## Andantino.

*f* Ah! quale in cogni-to Affet-to  
 flebi-le Dol-ce a sos-pen-de-re  
*pp* vien l'im-pla-ca-bi-le nostro fu-  
 sor. Ah! quale in-cogni-to  
 Affetto flebi-le Dol-ce a sos-pen-de-re  
 vien l'im-pla-ca-bi-le no-stro fu-  
 sor. *Lento. 13.* *N.*

## Andantino.

*f* Ah quale in-cogni-to Affet-to  
 flebi-le Dol-ce a sos-pen-de-re  
*pp* vien l'im-pla-ca-bi-le nostro fu-ror.  
*Allegro.*  
*f* Le porte Stida-no Su'-ne-ri  
 car di-ni-e il passo las-ci-no



*cres.*  
 Si-cu-ro e li-be-ro Al-vin-ci-

tor *ff* E il passo las-ci-no

Sicuro e li-be-ro Al-vin-ci-tor. *p*

Le porte strida-no Su' ne-ri

car-di-ni e il passo las-ci-no *dim.*

Si-curo e li-be-ro Al-vin-ci-tor.

E il passo las-ci-no Si-cu-ro

eli-be-ro Al-vin-ci-tor *2.*

*3.* Al-vin-ci-tor.

Empty musical staves for accompaniment.



