

# **Badische Landesbibliothek Karlsruhe**

**Digitale Sammlung der Badischen Landesbibliothek Karlsruhe**

## **La Juive. Excerpts - Don Mus.Ms. 607**

**Halévy, Fromental**

**[S.l.], 1840 (1840c)**

Viola [1. Exemplar]

**urn:nbn:de:bsz:31-80322**

# Viola.

Scena et Duo.

die Jüdin  
von Halevy.

Moderato.

Locopiuo All.<sup>o</sup> Solo

cresc.

Recit.<sup>o</sup>.

Recit.<sup>o</sup>. A. Müß unnumd Lohr = Inu Lneft.

And.te con moto. A. mag uniu Guffik für mufpndnu.

pp.

pp. arco.

biu Vazu! bunnid.

*All. mod<sup>to</sup>.* *mf*

*Recit<sup>o</sup>.* *All.*

*All.<sup>o</sup>.*

*Lento*

*Allo non troppo.*

Handwritten musical score on ten staves. The notation includes various notes, rests, and dynamic markings such as "col: voce", "a tempo", "Solo", and "ritar". There are also some corrections or additions in blue ink.

Handwritten musical score for violin and piano. The score consists of 12 staves. The first two staves are for the violin, and the remaining ten are for the piano. The music is written in a single system. The key signature has one flat (B-flat), and the time signature is 4/4. The score includes various performance instructions such as *cap*, *piu Lento.*, *a piacere*, *a tempo.*, *arco.*, *pp.*, *Cresc.*, and *pp.*. The notation includes notes, rests, and dynamic markings.

Handwritten musical score on 12 staves. The notation includes various notes, rests, and dynamic markings such as *p.p.*, *col: voce*, and *a tempo*. A *Solo* marking is present on the 10th staff, and a measure with a *10* is marked on the 11th staff.

Handwritten musical notation on a single staff, featuring a treble clef and a key signature of one sharp (F#). The notation includes a series of notes with stems, some with slurs, and dynamic markings such as *pp* and *lo*. A handwritten number '2' is visible above the staff.

Handwritten musical notation on a single staff, featuring a treble clef and a key signature of one sharp (F#). The notation includes a series of notes with stems, some with slurs, and dynamic markings such as *pp* and *lo*.

Handwritten musical notation on a single staff, featuring a treble clef and a key signature of one sharp (F#). The notation includes a series of notes with stems, some with slurs, and dynamic markings such as *pp* and *lo*. The word *cresc.* is written below the staff.

Handwritten musical notation on a single staff, featuring a treble clef and a key signature of one sharp (F#). The notation includes a series of notes with stems, some with slurs, and dynamic markings such as *pp* and *lo*.

Handwritten musical notation on a single staff, featuring a treble clef and a key signature of one sharp (F#). The notation includes a series of notes with stems, some with slurs, and dynamic markings such as *pp* and *lo*.

Handwritten musical notation on a single staff, featuring a treble clef and a key signature of one sharp (F#). The notation includes a series of notes with stems, some with slurs, and dynamic markings such as *pp* and *lo*.

Handwritten musical notation on a single staff, featuring a treble clef and a key signature of one sharp (F#). The notation includes a series of notes with stems, some with slurs, and dynamic markings such as *pp* and *lo*.

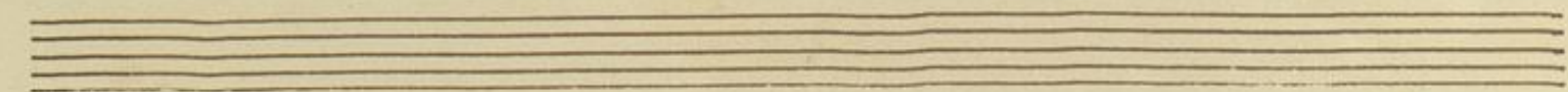
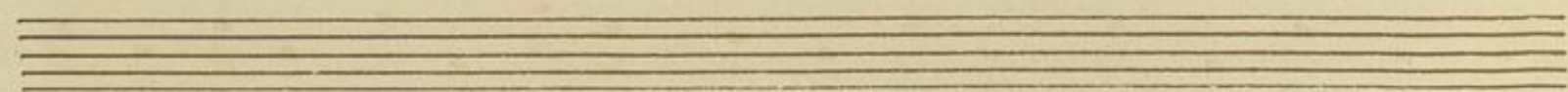
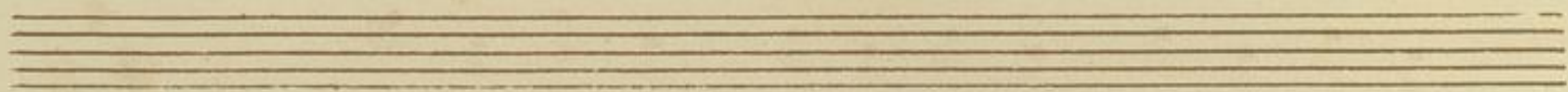
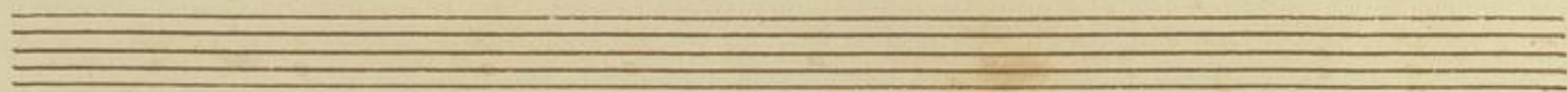
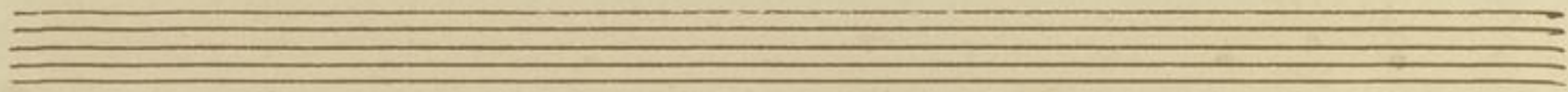
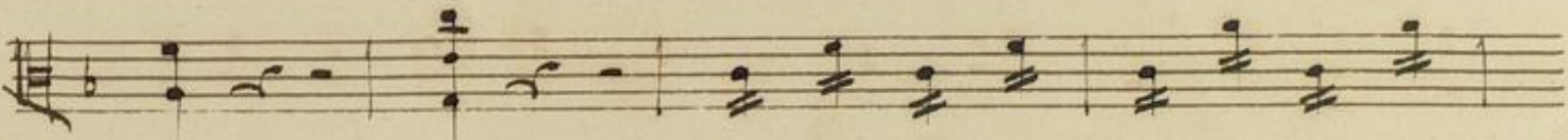
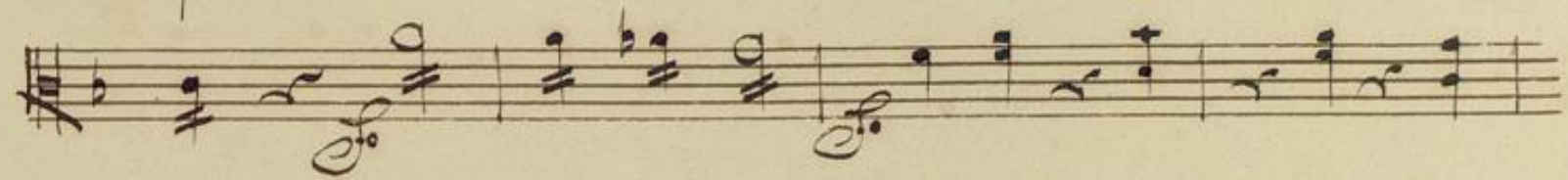
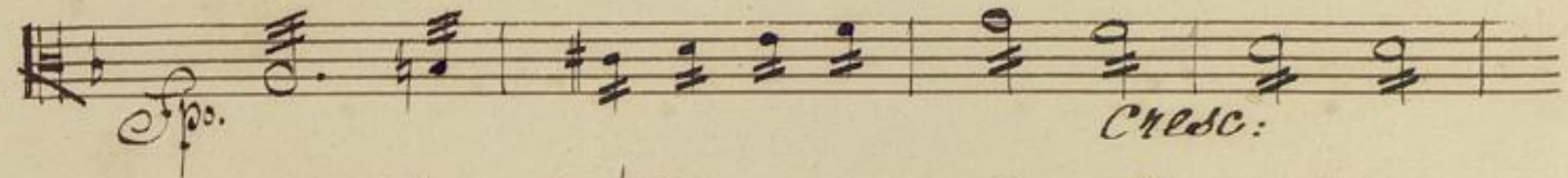
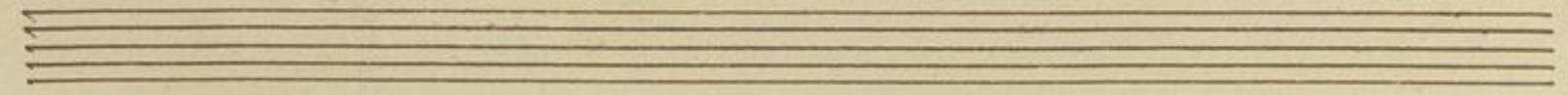
Handwritten musical notation on a single staff, featuring a treble clef and a key signature of one sharp (F#). The notation includes a series of notes with stems, some with slurs, and dynamic markings such as *pp* and *lo*. The word *col: voce* is written below the staff.

Handwritten musical notation on a single staff, featuring a treble clef and a key signature of one sharp (F#). The notation includes a series of notes with stems, some with slurs, and dynamic markings such as *pp* and *lo*. The word *a tempo.* is written below the staff.

Handwritten musical notation on a single staff, featuring a treble clef and a key signature of one sharp (F#). The notation includes a series of notes with stems, some with slurs, and dynamic markings such as *pp* and *lo*.

Handwritten musical notation on a single staff, featuring a treble clef and a key signature of one sharp (F#). The notation includes a series of notes with stems, some with slurs, and dynamic markings such as *pp* and *lo*.

Handwritten musical notation on a single staff, featuring a treble clef and a key signature of one sharp (F#). The notation includes a series of notes with stems, some with slurs, and dynamic markings such as *pp* and *lo*.





This image shows a page of 14 blank musical staves. Each staff is composed of five horizontal lines, and they are arranged vertically down the page. The paper is aged and yellowed, with some minor stains and foxing. There is no musical notation or other markings on the page.